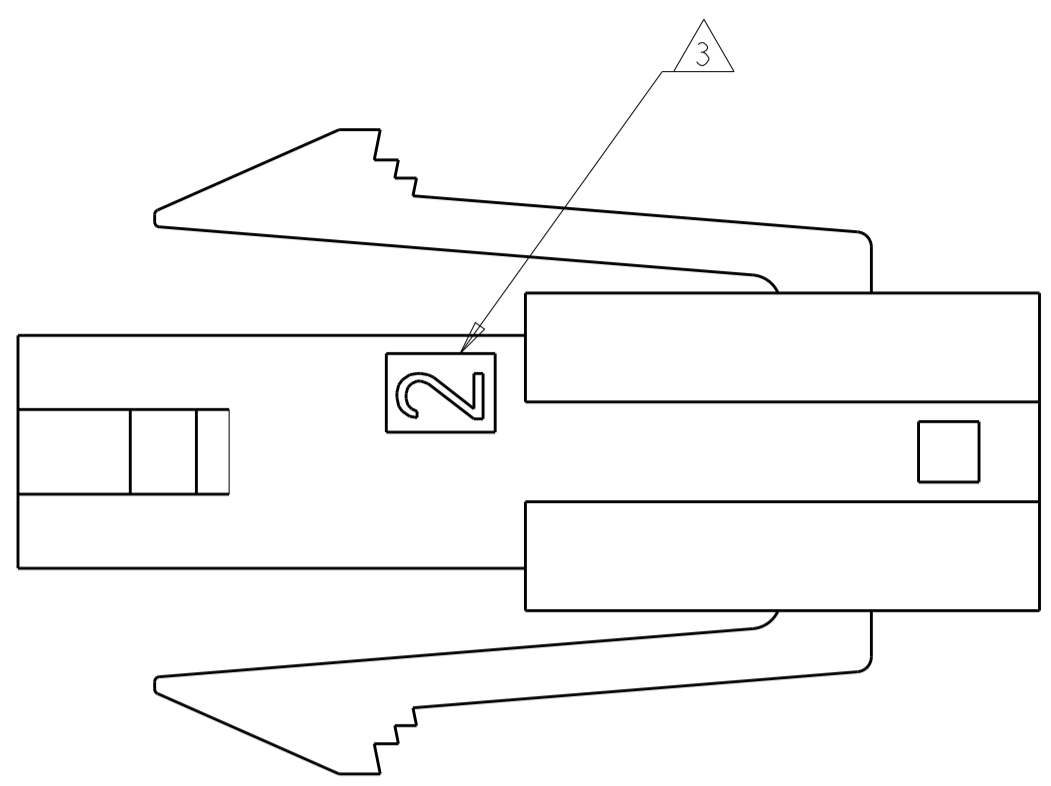
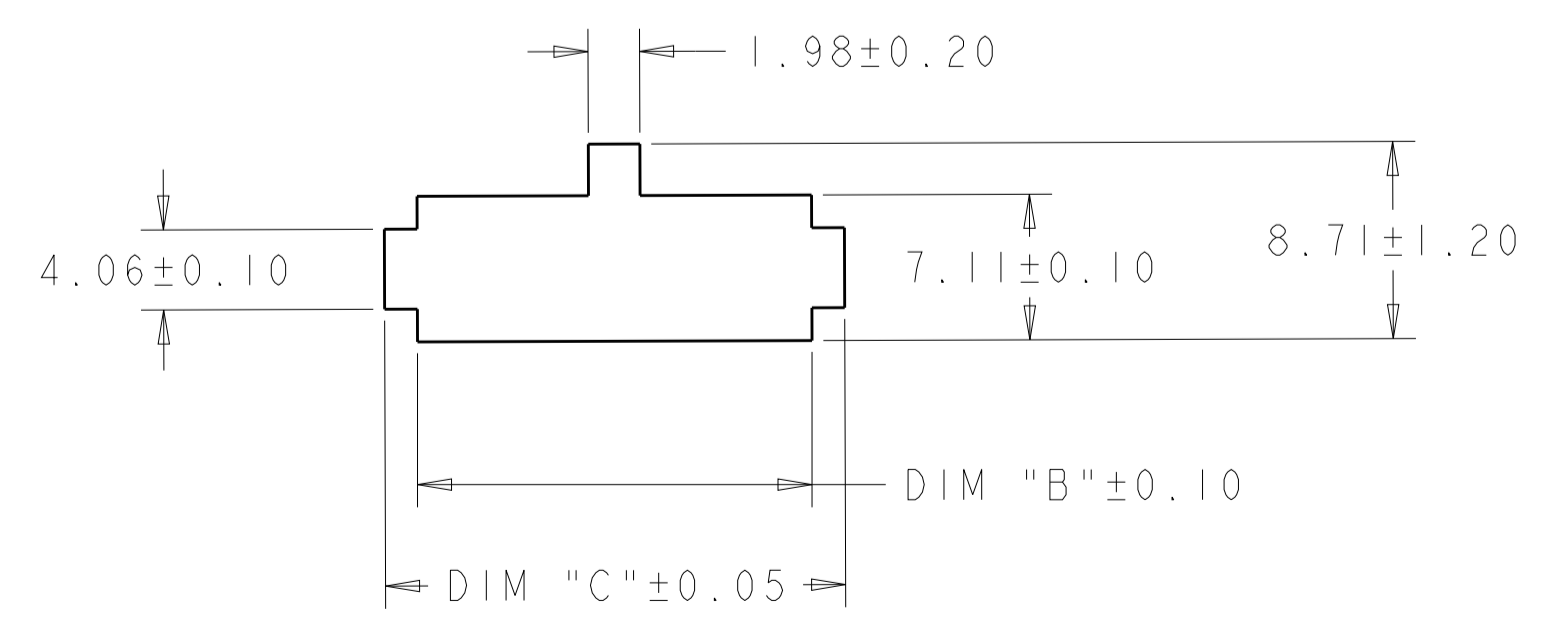
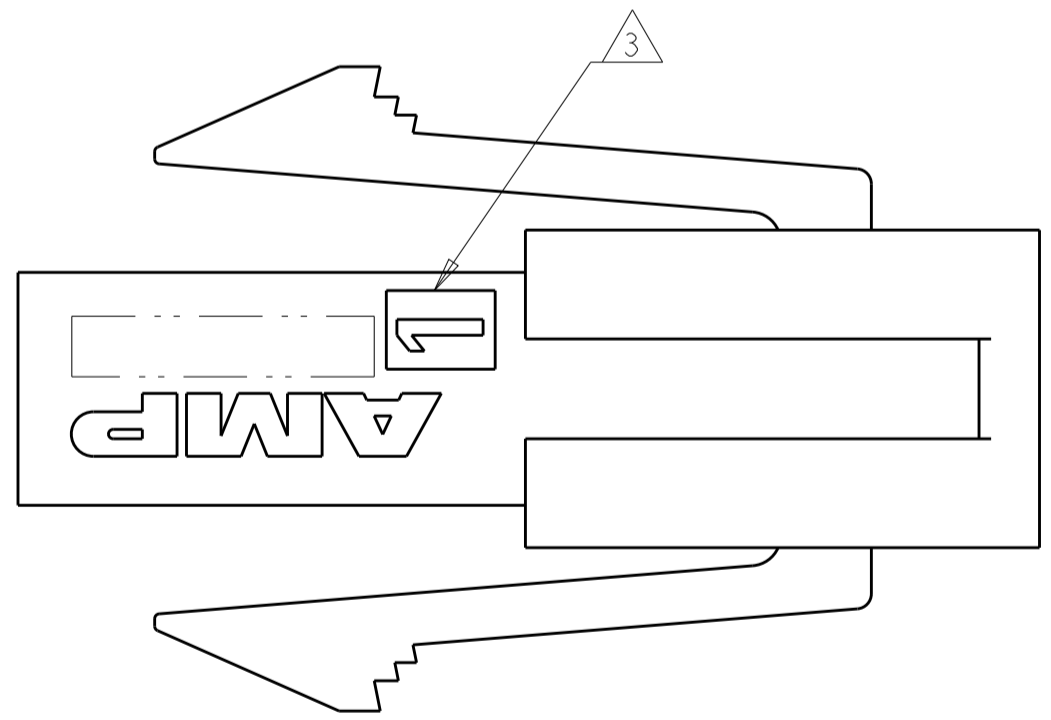
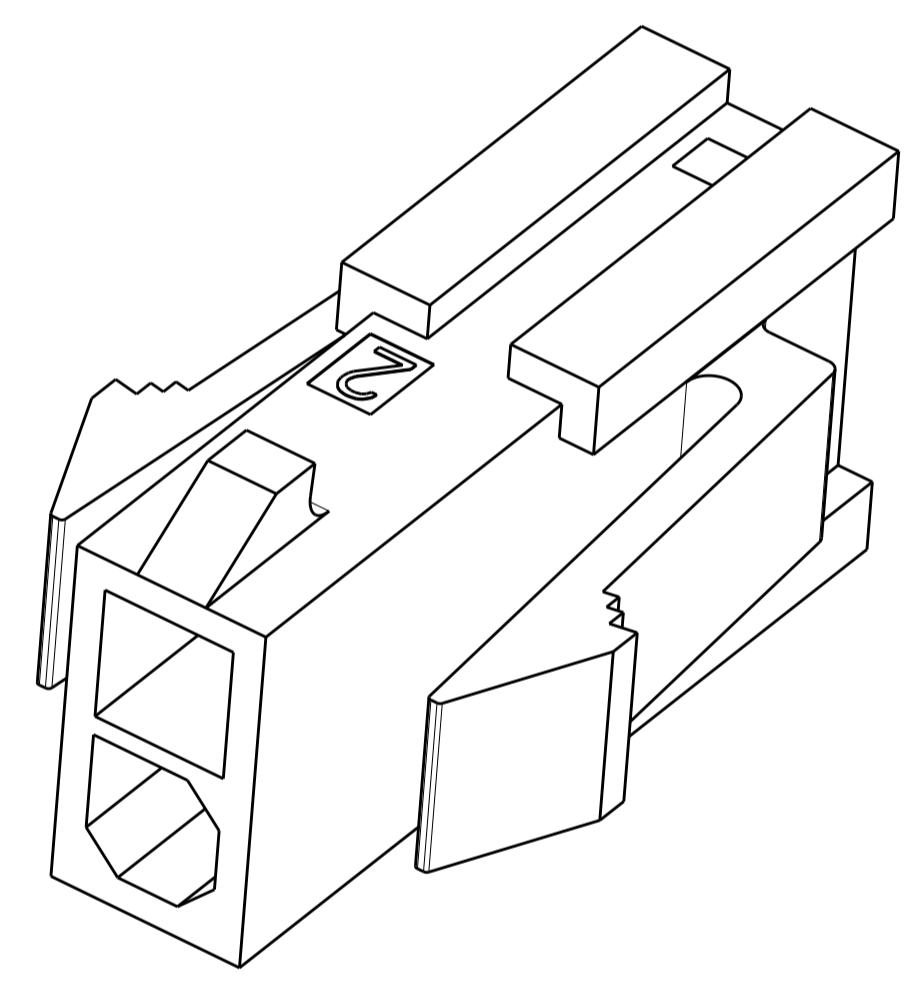
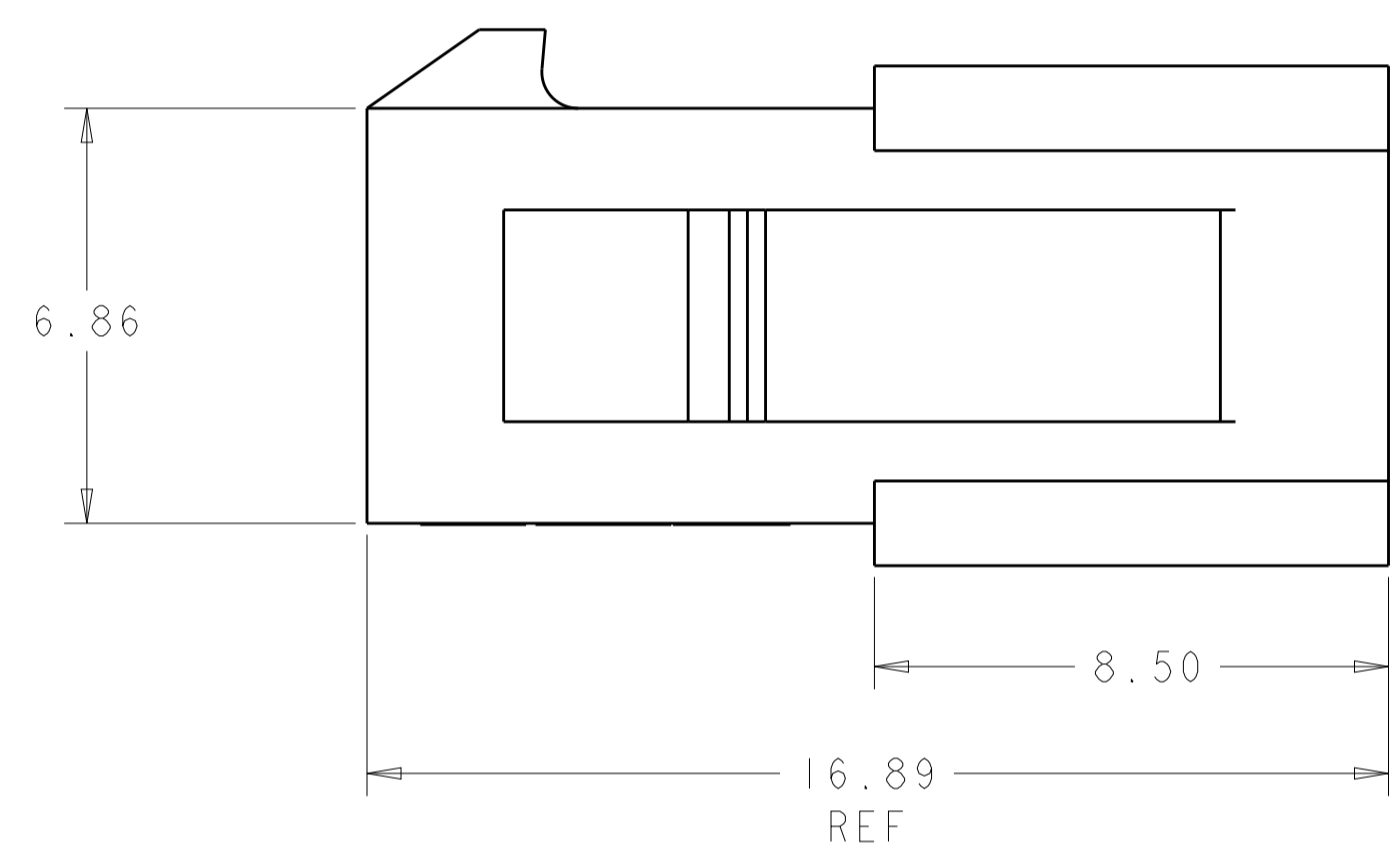
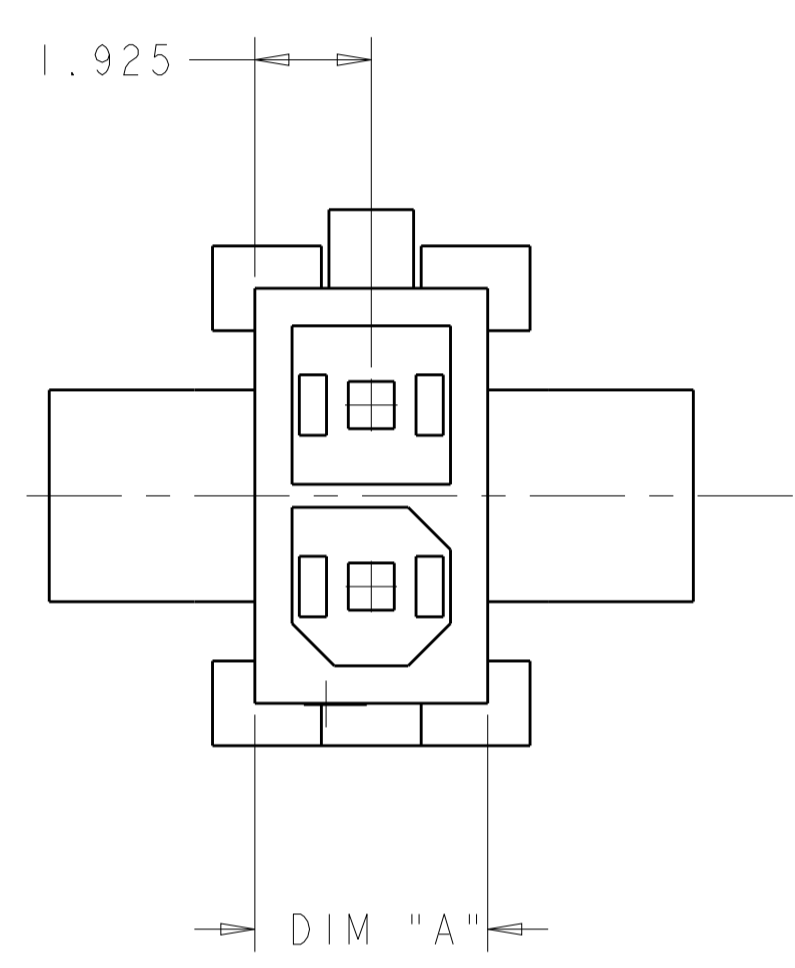


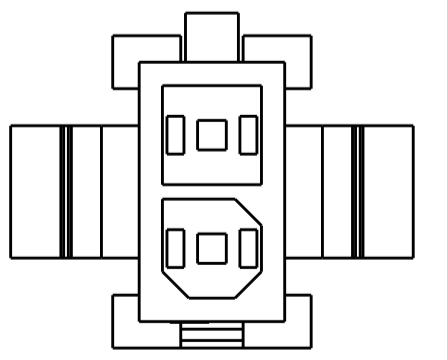
| REVISIONS |     |                           |           |     |      |
|-----------|-----|---------------------------|-----------|-----|------|
| P.        | LTN | DESCRIPTION               | DATE      | DWN | APVD |
| A1        |     | REVISED PER ECR-18-007792 | 21MAY2018 | JB  | DZ   |
| B         |     | REVISED PER ECR-18-014008 | 04SEP2018 | JB  | DZ   |



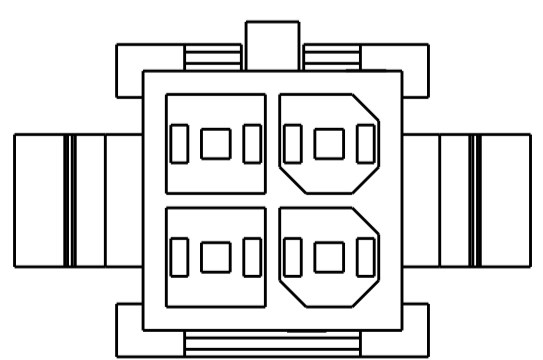
- △ RECOMMENDED PANEL THICKNESS 1.57-2.3
- 2 PANEL MUST BE PUNCHED SO THAT HOUSING ENTERS THE PANEL IN THE SAME DIRECTION AS THE PUNCH.
- △ CIRCUIT IDENTIFIER LOCATED APPROXIMATELY AS SHOWN,
- △ MATERIAL PA66 UL94-V0, GW, COLOR-NATURAL



PANEL CUT OUT △



2 POSITION



4 POSITION

|          |         |         |         |                  |             |
|----------|---------|---------|---------|------------------|-------------|
| UL94-V0  | 10.88   | 7.20    | 6.85    | 4                | 2315758-4   |
| GWT △    | 7.88    | 4.20    | 3.85    | 2                | 2315758-2   |
| MATERIAL | DIM "C" | DIM "B" | DIM "A" | NO. OF POSITIONS | PART NUMBER |

|  |  |                               |   |  |
|--|--|-------------------------------|---|--|
| THIS DRAWING IS A CONTROLLED DOCUMENT. |  | DWN: BASAVARAJA D A 02MAR2018 | TE Connectivity   |  |
| DIMENSIONS: mm                         |  | CHK: JYOTIRMAYA 02MAR2018     | NAME: PLUG HOUSING, DUAL ROW, PANEL MOUNT, MICRO MATE-N-LOK |  |
| TOLERANCES UNLESS OTHERWISE SPECIFIED: |  | APVD: DANIEL ZHANG 02MAR2018  | PRODUCT SPEC: 108-1836                                      |  |
| 0 PLC ±                                |  | APPLICATION SPEC: 114-13000   | SIZE: A1  |  |
| 1 PLC ±0.13                            |  | WEIGHT: -                     | CAGE CODE: 2315758  |  |
| 2 PLC ±                                |  | RESTRICTED TO: -              | SCALE: 8:1  |  |
| 3 PLC ±                                |  | CUSTOMER DRAWING              | SHEET 1 OF 1  |  |
| 4 PLC ±                                |  |                               | REV B   |  |
| ANGLES ±                               |  |                               |   |  |
| FINISH -                               |  |                               |   |  |

## X-ON Electronics

Largest Supplier of Electrical and Electronic Components

*Click to view similar products for [Headers & Wire Housings](#) category:*

*Click to view products by [TE Connectivity](#) manufacturer:*

Other Similar products are found below :

[892-18-020-10-001101](#) [58102-G61-06LF](#) [582553-1](#) [0009485154](#) [009176003701906](#) [0050291907](#) [LY20-4P-DT1-P1E-BR](#) [02.125.8002.8](#)  
[609-3404](#) [61062-3](#) [61082-181009](#) [622-3653LF](#) [63453-116](#) [636-1030](#) [636-1427](#) [636-3427](#) [636-4007](#) [641938-9](#) [641991-4](#) [644827-2](#) [65817-](#)  
[010LF](#) [65817-015LF](#) [65863-015LF](#) [66207-023LF](#) [67095-007LF](#) [67601157](#) [68645-018](#) [68648-049](#) [70.362.1628.0](#) [70-4210](#) [70-4226B](#) [70-](#)  
[4853B](#) [707-5020](#) [707-5028](#) [71.350.2428.0](#) [71918-208LF](#) [71961-016LF](#) [733-134](#) [733-162](#) [754199-000](#) [760-3052](#) [787-8014-00](#) [79531-3000](#)  
[FCN-360C032-B](#) [FCN-367T-T012/H](#) [FCN-723D010/2](#) [80.063.4001.1](#) [800-90-001-10-001000](#) [800-90-010-10-002000](#) [801-43-002-10-013000](#)