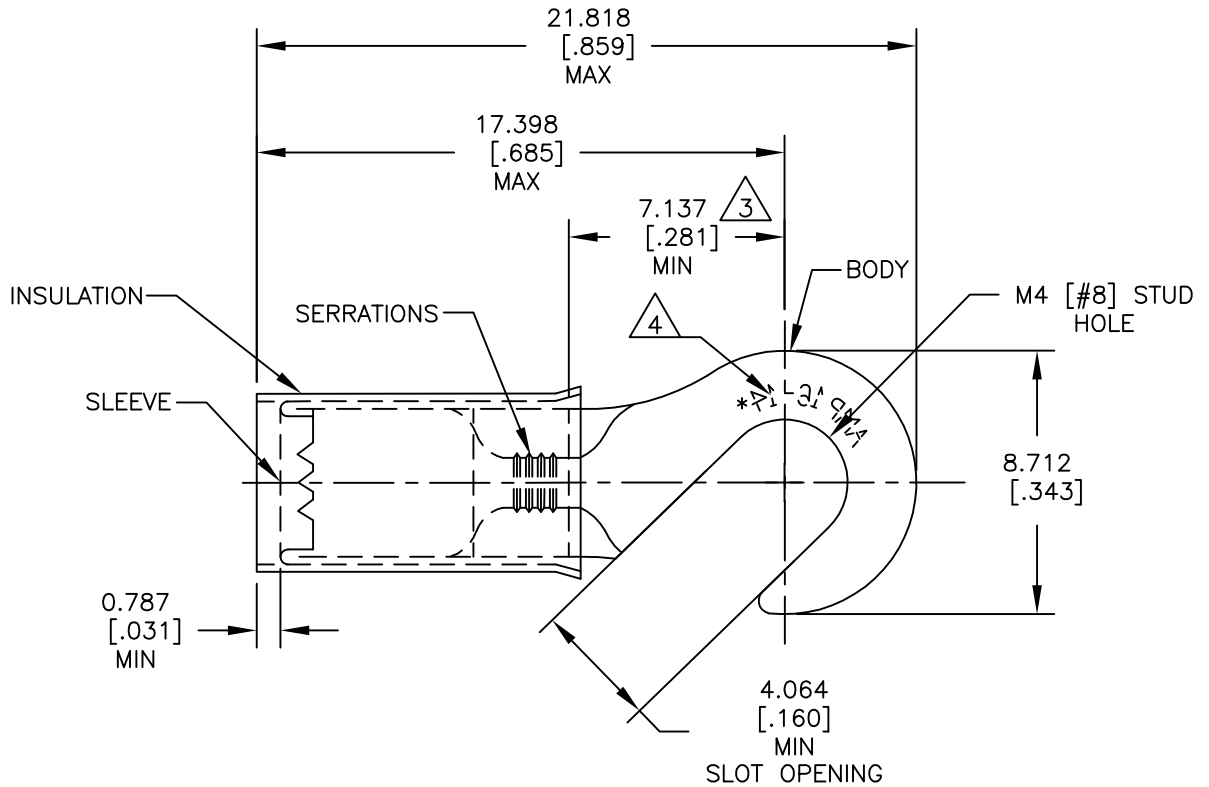


REVISIONS				
P	LTR	DESCRIPTION	DATE	APVD
	F1	REDRAWN PER ECO-17-007400	15DEC2017	RS DR

AMP WIRE RANGE	Listed FILE E13288	LR7189 Certified
16-14 AWG SOLID OR STRANDED	16-14 AWG SOLID OR STRANDED	16-14 AWG SOLID OR STRANDED



1 FOR $\phi 2.921[\phi.115]$ TO $\phi 4.318[\phi.170]$ WIRE INSULATION.

2 BODY MATERIAL THICKNESS: $0.787 \pm 0.051[.031 \pm .002]$

3 APPLIES FROM EDGE OF METAL WIRE BARREL TO CENTER OF STUD HOLE.

4 STAMP AMP 16-14* APPROX AS SHOWN.

5 MATERIAL:
BODY & SLEEVE: COPPER PER ASTM B152
INSULATION: NYLON

6 FINISH:
BODY & SLEEVE: TIN PLATE PER ASTM B545
INSULATION: COLOR-BLUE.

5000	ON TAPE	2-320306-1
1000	LOOSE PIECE	320306
QTY	PACKAGE TYPE	PART NO

RELEASED FOR PUBLICATION

ALL RIGHTS RESERVED.

THIS DRAWING IS UNPUBLISHED.

COPYRIGHT - TE Connectivity

DIMENSIONS: mm [INCHES]	DWN RAVI S	15DEC2017	MATERIAL	5	FINISH	6
	CHK ROHDE DANIEL F	15DEC2017	TE Connectivity			
TOLERANCES UNLESS OTHERWISE SPECIFIED:	APVD ROHDE DANIEL F	15DEC2017				
0 PLC ± -	PRODUCT SPEC	UL 486 A-B	NAME WIRE TERMINAL,			
1 PLC ± -	APPLICATION SPEC	114-2157	P.I.D.G - HOOK, WIRE SIZE: 16-14			
2 PLC ± -	WEIGHT	-	SIZE	CAGE CODE	DRAWING NO	RESTRICTED TO
3 PLC ± 0.127[.005]			A4	00779	C= 320306	-
4 PLC ± -	CUSTOMER DRAWING		SCALE	4:1	SHEET	1 OF 1
ANGLES ± 5°					REV	F1

X-ON Electronics

Largest Supplier of Electrical and Electronic Components

Click to view similar products for [Terminals](#) category:

Click to view products by [TE Connectivity](#) manufacturer:

Other Similar products are found below :

[00-054007-01074-6](#) [00-054007-70206-1](#) [00-054007-70210-8](#) [00-054007-70217-7](#) [00-054007-70226-9](#) [00-054007-70228-3](#) [00-054007-70248-1](#) [00-054007-70256-6](#) [00-054007-70301-3](#) [00-054007-70316-7](#) [0-0320562-0](#) [00-054007-49560-4](#) [00-054007-70209-2](#) [00-054007-70225-2](#) [00-054007-70227-6](#) [00-054007-70231-3](#) [00-054007-70241-2](#) [00-054007-70242-9](#) [00-054007-70244-3](#) [00-054007-70246-7](#) [00-054007-70263-4](#) [00-054007-70288-7](#) [00-054007-70290-0](#) [00-054007-70300-6](#) [00-054007-70304-4](#) [01-2065-1-0216](#) [01-2900-1-04412](#) [00581P0075](#) [600TS-10](#) [60205-1](#) [604200-1](#) [605601-1](#) [60598-1-CUT-TAPE](#) [61314-6-C](#) [61810-3](#) [61-S](#) [61-SN](#) [626-0194](#) [62-NBM-A](#) [62-SN](#) [62-SP](#) [63-S](#) [640179-1](#) [M55155/059I03](#) [M55155/079C01](#) [M55155/099H02](#) [M55155/109H01](#) [M55155/109H02](#) [M55155/12XH05](#) [M55155/16XH02](#)