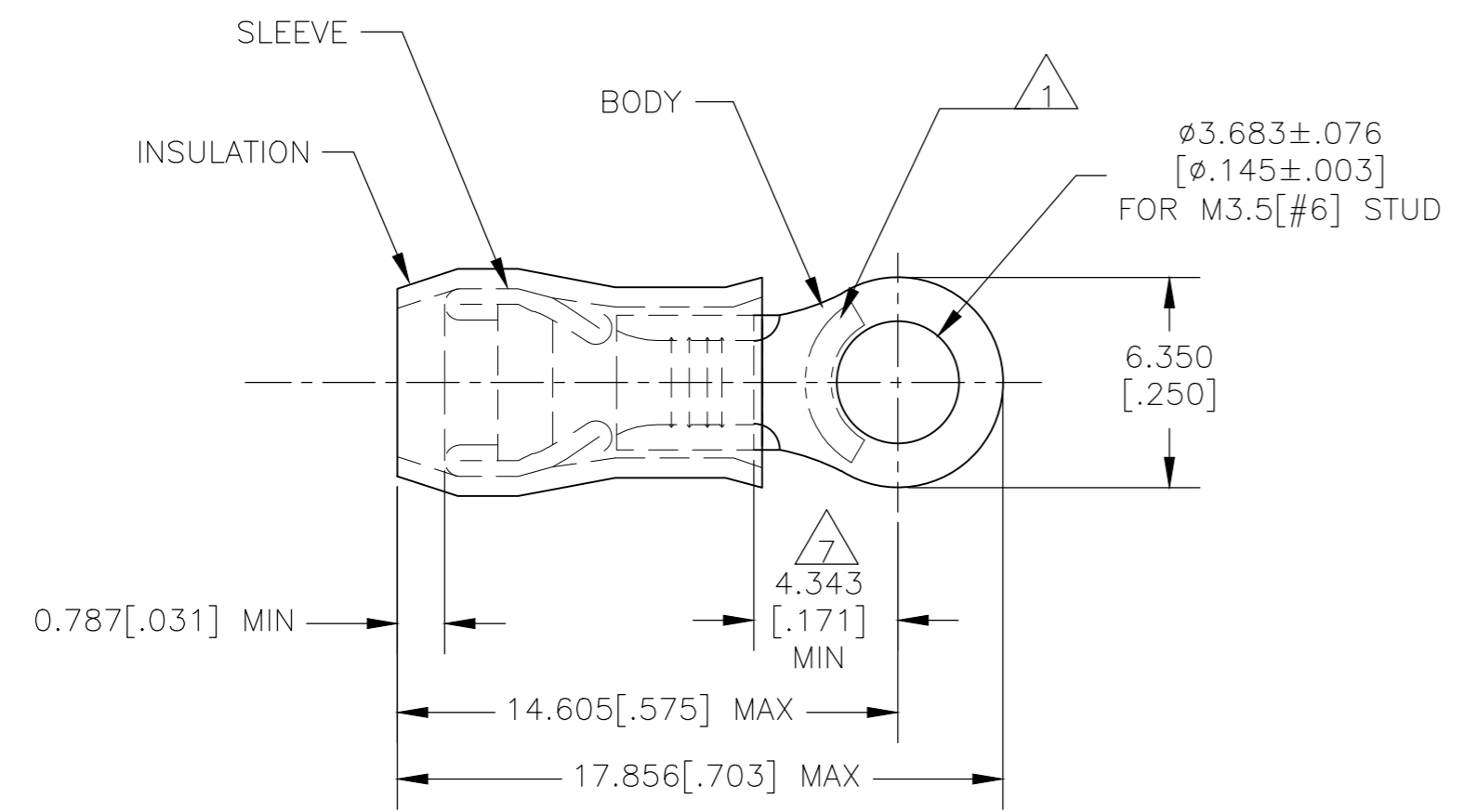
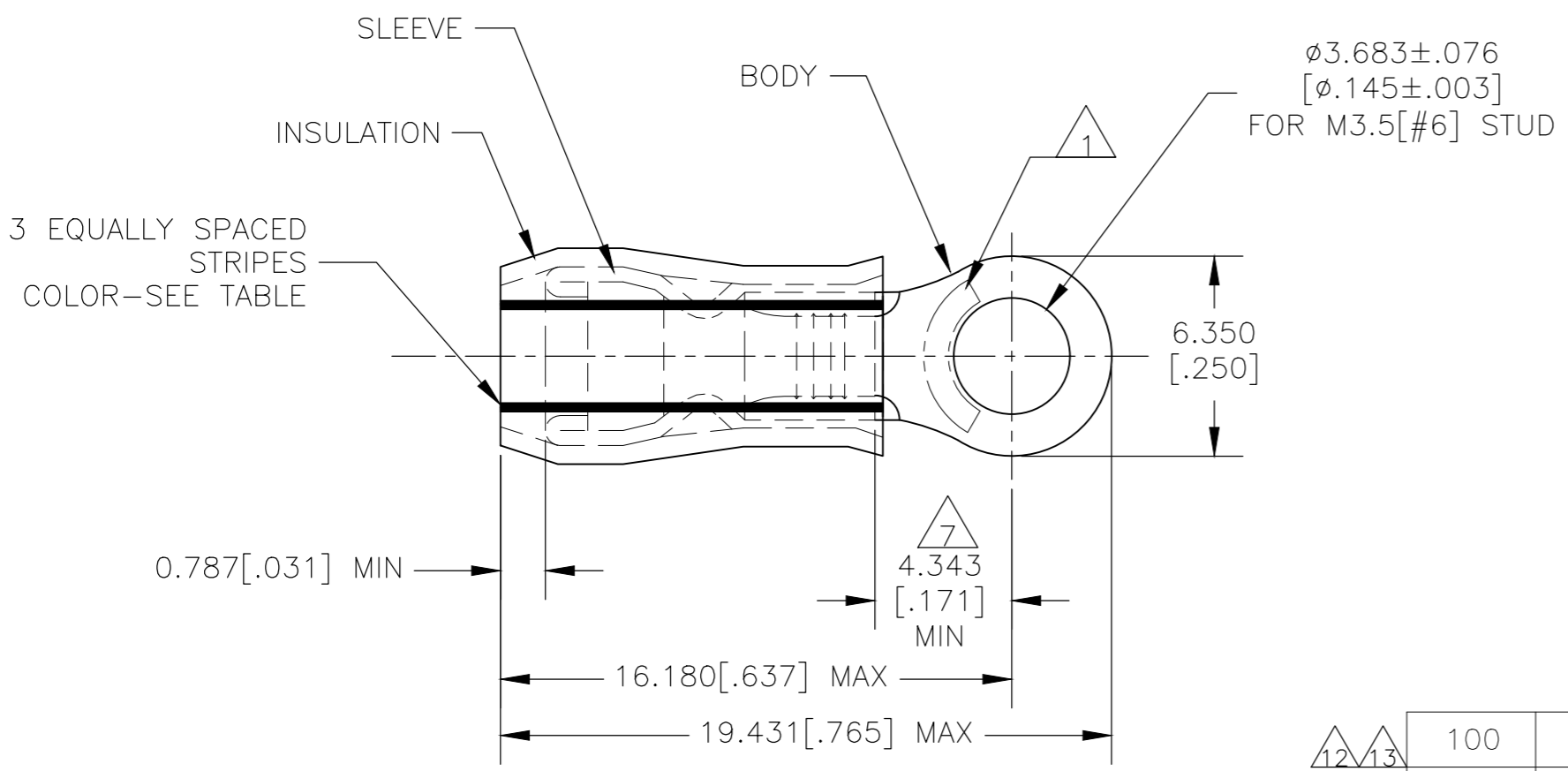


| LOC | DIST | REVISIONS                 |           |     |      |
|-----|------|---------------------------|-----------|-----|------|
| P   | LTR  | DESCRIPTION               | DATE      | DWN | APVD |
| G   | 14   |                           |           |     |      |
|     | P1   | REVISED PER ECO-19-007720 | 21MAY2020 | KR  | DR   |



STYLE A



STYLE B  
INSULATION RESTRICTING

|  |                       |  |
|--|-----------------------|--|
| <b>AMP</b><br>WIRE RANGE                       | E13288<br>Listed      | LR7189<br>Certified                                      |
| 16-14 AWG<br>SOLID OR STRANDED<br>IR: STRANDED | 16-14 AWG<br>STRANDED | WIRE SIZE PER TABLE<br>SOLID OR STRANDED<br>IR: STRANDED |

- 1 STAMP "AMP - SEE TABLE" APPROX AS SHOWN.
- 2 WIRE INSULATION DIA: SEE TABLE.
- 3 BODY MATERIAL THK: 0.787 [.031] ± 0.051 [.002].
- 4 BODY: TIN PLATE 0.00254 [.000100] MIN EXT THK PER ASTM B545.
- 5 SLEEVE: TIN PLATE 0.00254 [.000100] MIN EXT THK PER ASTM B545.
- 6 BODY & SLEEVE- CU PER ASTM B152  
INSULATION - NYLON PER ASTM D4066
- 7 APPLIES FROM EDGE OF METAL WIRE BARREL TO CENTER OF STUD HOLE.
- 8 MEETS MS25036-106, CLASS 1 & 2.
- 9 MEETS MS25036-106, CLASS 2.
- 10 MEETS M7928/1-39, CLASS 1 & 2.
- 11 MEETS M7928/1-48, CLASS 1 & 2.
- 12 UL LISTED
- 13 CSA CERTIFIED

| QTY  | PACKAGE TYPE     | STAMPING | WIRE INSUL DIA            | WIRE SIZE | STRIPE COLOR | STYLE | BODY FINISH | SLEEVE FINISH | PART NO       |
|------|------------------|----------|---------------------------|-----------|--------------|-------|-------------|---------------|---------------|
| 100  | LOOSE PIECE, BOX | 16-14*   | 2.667 [.105]-3.810 [.150] | 16-14     | --           | A     |             |               | 8-320561-1    |
| 500  | LOOSE PIECE      | 14*      | 1.981 [.078]-3.302 [.130] | 14        | GREEN        | B     | 4           | 5             | 11 2-320561-4 |
| 500  | LOOSE PIECE      | 16*      | 1.600 [.063]-3.302 [.130] | 16        | BLUE         | B     | 4           | 5             | 10 2-320561-3 |
| 5000 | 320561 ON TAPE   | 16-14*   | 2.667 [.105]-3.810 [.150] | 16-14     | --           | A     |             |               | 9 2-320561-2  |
| 500  | LOOSE PIECE      | 16-14*   | 2.667 [.105]-3.810 [.150] | 16-14     | --           | A     |             |               | 8 320561      |

|  |  |   |  |  |                                 |                            |                  |                    |                        |               |
|--|--|---|--|--|---------------------------------|----------------------------|------------------|--------------------|------------------------|---------------|
| <b>CUSTOMER SERVICE SYSTEMS</b>  |  | MAX RECOMMENDED OPERATING TEMPERATURE:<br>105°C [221°F] MAX   | THIS DRAWING IS A CONTROLLED DOCUMENT. |  | DWN<br>JR RUTH<br>13JAN10       | <b>STE</b> TE Connectivity |                  |                    |                        |               |
| FOR ADDITIONAL PRODUCT INFORMATION OR COPIES OF DRAWINGS AND TECHNICAL DOCUMENTS | PRODUCT INFORMATION CENTER<br>1-800-522-6752 | VOLTAGE RATING:<br>300 VOLT MAX   | DIMENSIONS:<br>mm [INCHES]             | TOLERANCES UNLESS OTHERWISE SPECIFIED:                                   | CHK<br>T MICHELUTTI<br>13JAN10  | NAME                       |                  |                    |                        |               |
| FOR APPLICATION  | TOOLING ASSISTANCE CENTER<br>1-800-722-1111  | CIRCULAR MIL AREA:<br>1.02-2.62mm² [2,050-5,180] STRANDED OR SOLID  |  | 0 PLC ± -<br>1 PLC ± -<br>2 PLC ± -<br>3 PLC ± 0.127 [.005]<br>4 PLC ± - | APVD<br>T MICHELUTTI<br>13JAN10 | PRODUCT SPEC               |                  |                    |                        |               |
| TOOLING INFORMATION  | 1-800-722-1111                               |   |  | ANGLES ± -   | UL 486 A-B                      |                            | APPLICATION SPEC |                    |                        |               |
| FOR ORDER ENTRY  | 1-800-526-5142                               |   | MATERIAL                               | FINISH   | 114-2157                        |                            | SIZE<br>A2       | CAGE CODE<br>00779 | DRAWING NO<br>C-320561 | RESTRICTED TO |
|  |  | THIS DRAWING IS A CONTROLLED DOCUMENT FOR AMP INCORPORATED. IT IS SUBJECT TO CHANGE AND THE CONTROLLING ENGINEERING ORGANIZATION SHOULD BE CONTACTED FOR THE LATEST REVISION. | SEE TABLE<br>INSULATION: COLOR BLUE    |  | CUSTOMER DRAWING                |                            | SCALE<br>5:1     | SHEET<br>1 of 1    | REV<br>P1              |               |

## X-ON Electronics

Largest Supplier of Electrical and Electronic Components

*Click to view similar products for [Terminals](#) category:*

*Click to view products by [TE Connectivity](#) manufacturer:*

Other Similar products are found below :

[00-054007-01074-6](#) [00-054007-70206-1](#) [00-054007-70210-8](#) [00-054007-70217-7](#) [00-054007-70226-9](#) [00-054007-70228-3](#) [00-054007-70248-1](#) [00-054007-70256-6](#) [00-054007-70301-3](#) [00-054007-70316-7](#) [0-0320562-0](#) [00-054007-49560-4](#) [00-054007-70209-2](#) [00-054007-70225-2](#) [00-054007-70227-6](#) [00-054007-70231-3](#) [00-054007-70241-2](#) [00-054007-70242-9](#) [00-054007-70244-3](#) [00-054007-70246-7](#) [00-054007-70263-4](#) [00-054007-70288-7](#) [00-054007-70290-0](#) [00-054007-70300-6](#) [00-054007-70304-4](#) [01-2065-1-0216](#) [01-2900-1-04412](#) [00581P0075](#) [600TS-10](#) [60205-1](#) [604200-1](#) [605601-1](#) [60598-1-CUT-TAPE](#) [61314-6-C](#) [61810-3](#) [61-S](#) [61-SN](#) [626-0194](#) [62-NBM-A](#) [62-SN](#) [62-SP](#) [63-S](#) [640179-1](#) [M55155/059I03](#) [M55155/079C01](#) [M55155/099H02](#) [M55155/109H01](#) [M55155/109H02](#) [M55155/12XH05](#) [M55155/16XH02](#)