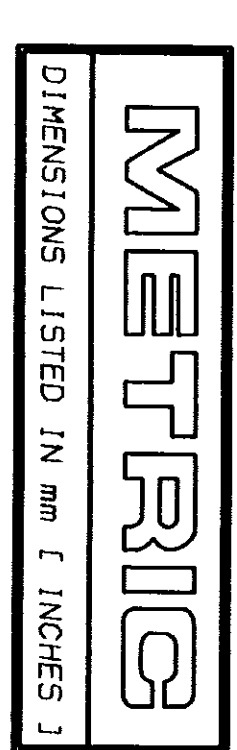
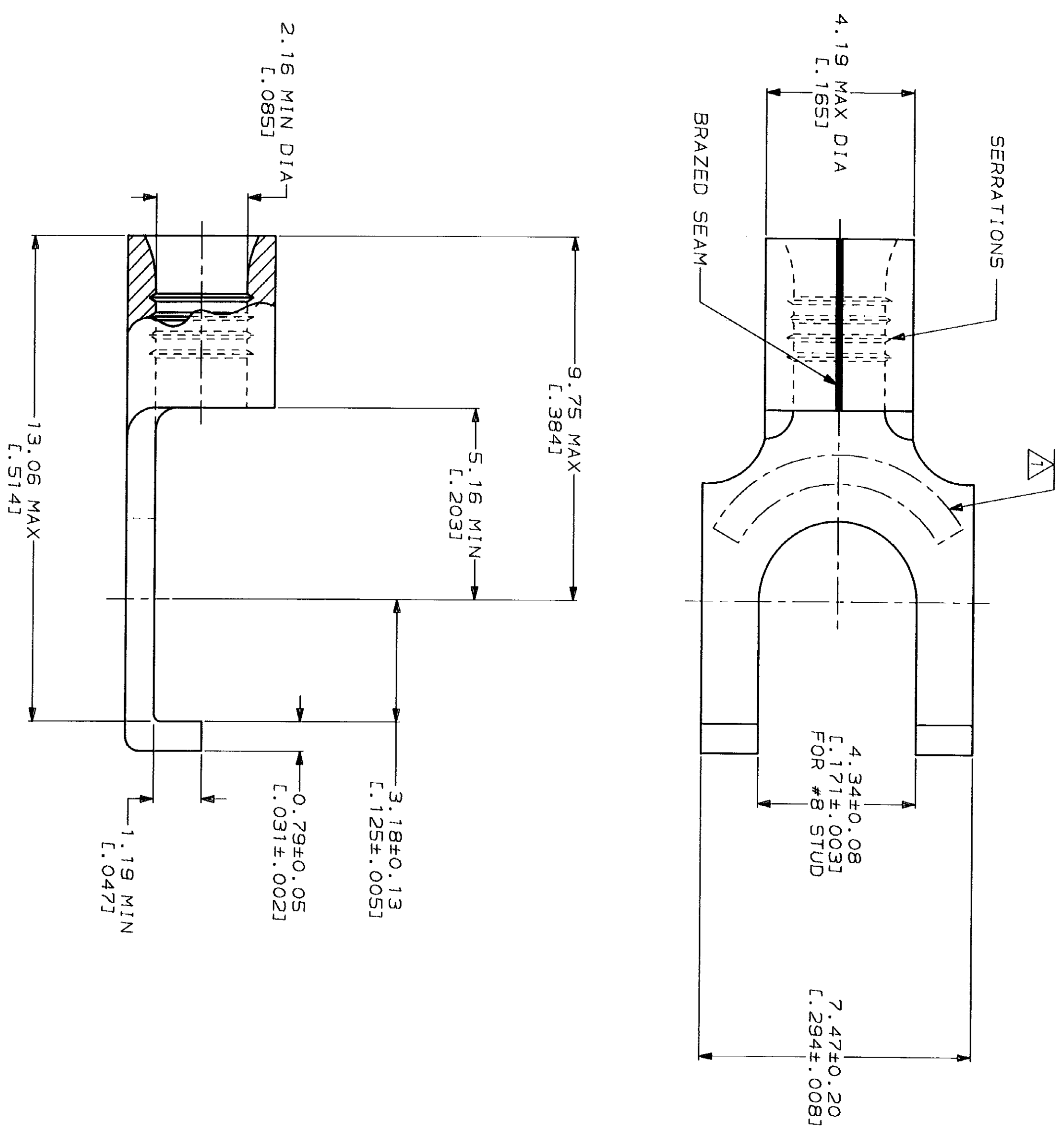


LOC	DIST	ZONE	LTR	DESCRIPTION	DATE	APPD
G	14	P	D	REV. RDRW, 2 SM PKG PER 0720-0040-93	4-8-93	18 DAP



<b>AMP</b> WIRE RANGE 16-14 AWG SOLID OR STRANDED	<b>UL</b> E13288 Listed 16-14 AWG SOLID OR STRANDED
<b>LR7189</b> Certified 16-14 AWG SOLID OR STRANDED	MILITARY P/N AND CLASS NOT APPLICABLE

STAMP AMP 16-14\* APPROX AS SHOWN



**AMP INCORPORATED  
CUSTOMER SERVICE SYSTEMS**

FOR ADDITIONAL PRODUCT INFORMATION OR COPIES OF DRAWINGS AND TECHNICAL DOCUMENTS	PRODUCT INFORMATION CENTER 1-800-522-6752
FOR APPLICATION TOOLING INFORMATION	TOOLING ASSISTANCE CENTER 1-800-722-1111
FOR ORDER ENTRY	1-800-526-5142

MAX RECOMMENDED OPERATING TEMPERATURE: 170°C MAX

VOLTAGE RATING: NOT APPLICABLE

WIRE CROSS SECTIONAL AREA RANGE: 1.04-2.62mm<sup>2</sup> (2,050-5,180) CIR MILS  
SOLID OR STRANDED

DO NOT SCALE PRINT. UNLESS SPECIFIED DIMENSIONS IN mm [ INCHES ] TOLERANCES ON: 2 PLC DEC # - - 3 PLC DEC # - - ANGLES MATERIAL COPPER PER ASTM B-152 ANNEALED

FINISH TIN PLATE  
0.00254 [L.000100] MIN THK PER MIL-T-10727

DR 4-8-93  
TA BRINKMAN

CHK 4-8-93  
DA PATTERSON

APPD 4-8-93  
DE MILLER

APPD 4-8-93  
JL MECKLEY

PRODUCT SPEC

APPLICATION SPEC

WEIGHT -

100	LOOSE PIECE, BOX	8-320856-1
5000	ON TAPE	2-320856-1
---	LOOSE PIECE	320856

**AMP**  
AMP Incorporated  
Harrisburg, PA 17105-3608

TERMINAL, FLANGED  
SPADE, SOLI STRAND™

SIZE	CAGE CODE	DRAWING NO
SCALE	00779	G-320856
SCALE	10:1	SHEET
		1 OF 1

## X-ON Electronics

Largest Supplier of Electrical and Electronic Components

*Click to view similar products for [Terminals](#) category:*

*Click to view products by [TE Connectivity](#) manufacturer:*

Other Similar products are found below :

[00-054007-01074-6](#) [00-054007-70206-1](#) [00-054007-70210-8](#) [00-054007-70217-7](#) [00-054007-70226-9](#) [00-054007-70228-3](#) [00-054007-70248-1](#) [00-054007-70256-6](#) [00-054007-70301-3](#) [00-054007-70316-7](#) [0-0320562-0](#) [00-054007-49560-4](#) [00-054007-70209-2](#) [00-054007-70225-2](#) [00-054007-70227-6](#) [00-054007-70231-3](#) [00-054007-70241-2](#) [00-054007-70242-9](#) [00-054007-70244-3](#) [00-054007-70246-7](#) [00-054007-70263-4](#) [00-054007-70288-7](#) [00-054007-70290-0](#) [00-054007-70300-6](#) [00-054007-70304-4](#) [01-2065-1-0216](#) [01-2900-1-04412](#) [00581P0075](#) [600TS-10](#) [60205-1](#) [604200-1](#) [605601-1](#) [60598-1-CUT-TAPE](#) [61314-6-C](#) [61810-3](#) [61-S](#) [61-SN](#) [626-0194](#) [62-NBM-A](#) [62-SN](#) [62-SP](#) [63-S](#) [640179-1](#) [M55155/059I03](#) [M55155/079C01](#) [M55155/099H02](#) [M55155/109H01](#) [M55155/109H02](#) [M55155/12XH05](#) [M55155/16XH02](#)