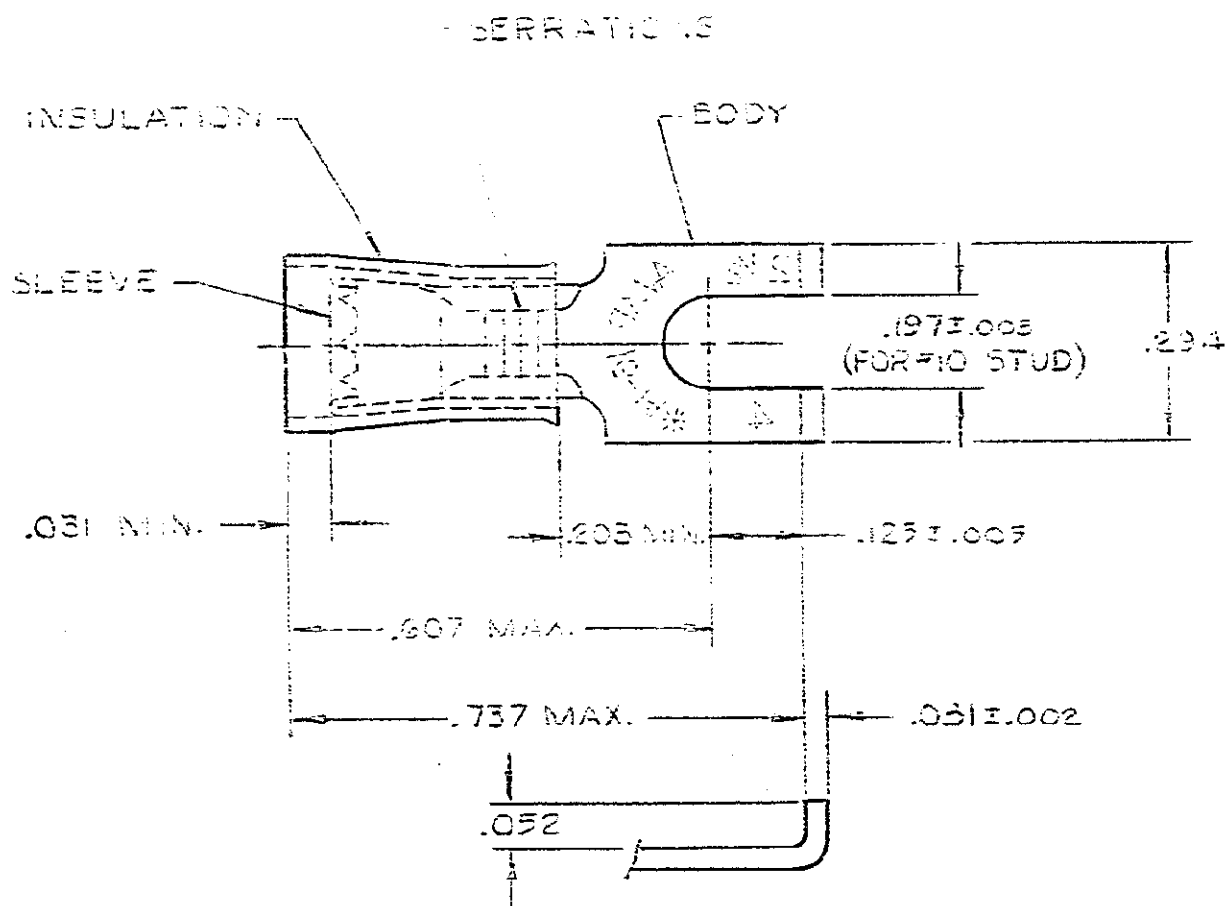


THIS DRAWING IS UNPUBLISHED. RELEASED FOR PUBLICATION  
 © COPYRIGHT

|           |   |      |     |                           |         |          |      |
|-----------|---|------|-----|---------------------------|---------|----------|------|
|           |   |      |     | 1                         |         | LOC      | DIST |
| REVISIONS |   |      |     |                           |         |          |      |
| P         | F | ZONE | LTR | DESCRIPTION               | DATE    | APPROVED |      |
|           |   |      | J1  | REVISED PER ECO-11-005294 | 13APR11 | HMR      |      |



- 1. WIRE INSULATION DIA. - SEE TABLE
- 2. BODY FINISH: TIN PLATE (MIL-T-10727)  
.000100 MIN THK

|             |                        |                 |                             |                       |
|-------------|------------------------|-----------------|-----------------------------|-----------------------|
|             | .115 - .170            | 100             | LOOSE PC, BOX               | 8-320863-1            |
| 0<br>0<br>S | <del>.115 - .170</del> | <del>100</del>  | <del>ON TAPE, SW. BOX</del> | <del>2-320863-6</del> |
|             | <del>.115 - .170</del> | <del>1000</del> | <del>ON TAPE, LA. BOX</del> | <del>2-320863-5</del> |
| 085,        | <del>.115 - .170</del> | <del>1</del>    | <del>LOOSE PIECE</del>      | <del>2-320863-3</del> |
|             | .115 - .170            | 5000            | ON TAPE, REEL               | 2-320863-2            |
|             | .115 - .170            | 1               | LOOSE PIECE                 | 320863                |

| WIRE INS DIA  | QUANTITY | DESCRIPTION   | PART NO |
|---|----------|---|---------|
| UNLESS OTHERWISE SPECIFIED DIMENSIONS ARE IN INCHES. TOLERANCES ON: DECIMALS ±.008 ANGLES ± |          | CONTRACT NO   |         |
| MATERIAL INSULATION: NYLON - BLUE BODY & SLEEVE: COPPER (33-C-576)                          |          | DR UTA / SFB 9-30-89                                  |         |
| FINISH BODY: 2  |          | CHK <i>Ph...</i> 11-26-13                             |         |
|   |          | APPD <i>...</i> 11-26-13                              |         |
|   |          | DSGN APPD   |         |
|   |          | OTHER APPD  |         |
|   |          | NAME  |         |
|   |          | WIRE TERMINAL P.I.D.G.-FLANGED SPADE WIRE SIZE: 16-14 |         |
| SIZE  | FSCM NO  | DRAWING NO  |         |
| B   | 00779    | 320863  |         |
| SCALE NTS   |          | SHEET 1 OF 1  |         |

## X-ON Electronics

Largest Supplier of Electrical and Electronic Components

*Click to view similar products for [Terminals](#) category:*

*Click to view products by [TE Connectivity](#) manufacturer:*

Other Similar products are found below :

[00-054007-01074-6](#) [00-054007-70206-1](#) [00-054007-70210-8](#) [00-054007-70217-7](#) [00-054007-70226-9](#) [00-054007-70228-3](#) [00-054007-70248-1](#) [00-054007-70256-6](#) [00-054007-70301-3](#) [00-054007-70316-7](#) [0-0320562-0](#) [00-054007-49560-4](#) [00-054007-70209-2](#) [00-054007-70225-2](#) [00-054007-70227-6](#) [00-054007-70231-3](#) [00-054007-70241-2](#) [00-054007-70242-9](#) [00-054007-70244-3](#) [00-054007-70246-7](#) [00-054007-70263-4](#) [00-054007-70288-7](#) [00-054007-70290-0](#) [00-054007-70300-6](#) [00-054007-70304-4](#) [01-2065-1-0216](#) [01-2900-1-04412](#) [00581P0075](#) [600TS-10](#) [60205-1](#) [604200-1](#) [605601-1](#) [60598-1-CUT-TAPE](#) [61314-6-C](#) [61810-3](#) [61-S](#) [61-SN](#) [626-0194](#) [62-NBM-A](#) [62-SN](#) [62-SP](#) [63-S](#) [640179-1](#) [M55155/059I03](#) [M55155/079C01](#) [M55155/099H02](#) [M55155/109H01](#) [M55155/109H02](#) [M55155/12XH05](#) [M55155/16XH02](#)