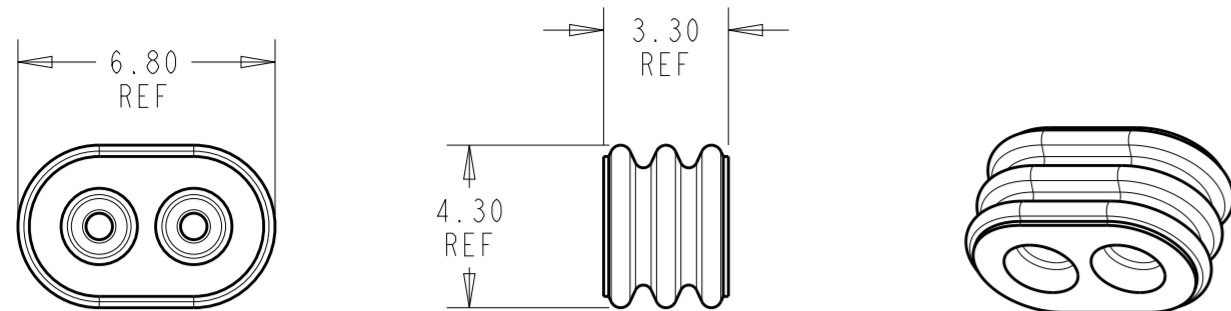
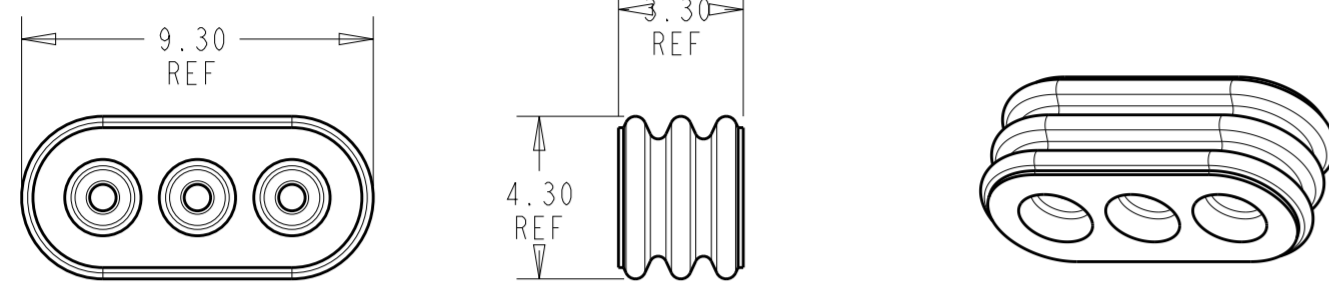


REVISIONS

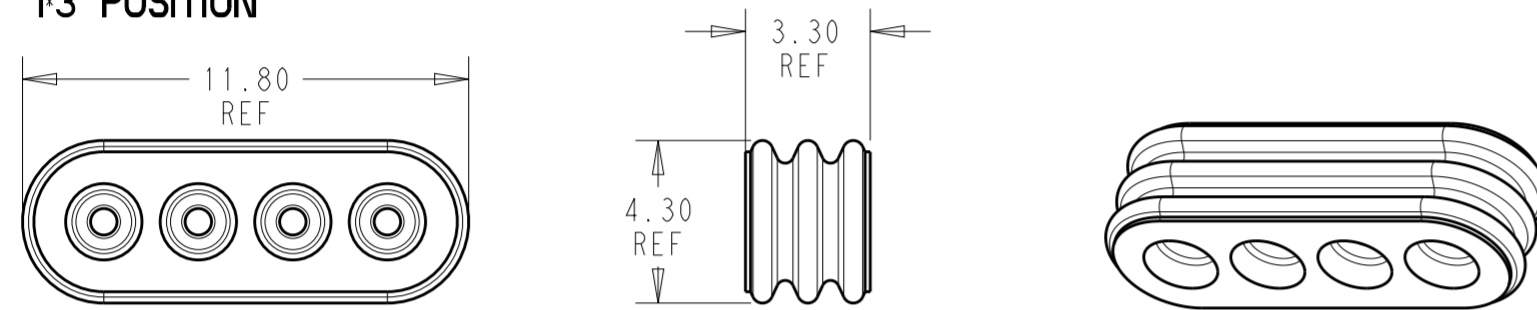
P	LTR	DESCRIPTION	DATE	DWN	APVD
	A	FIRST RELEASE	02APR2019	L.C	D.Z



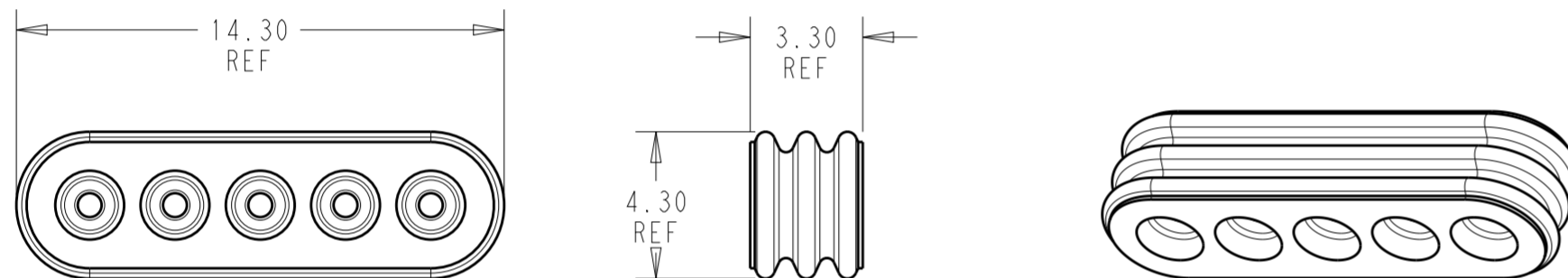
1-2 POSITION



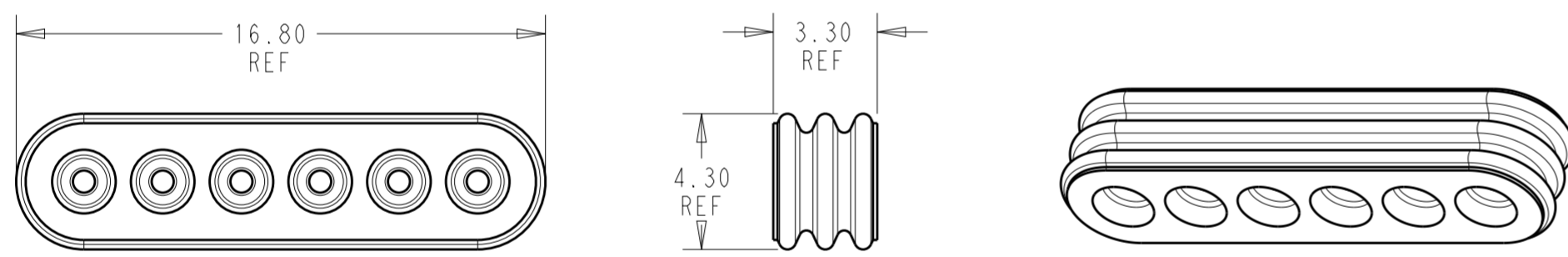
1-3 POSITION



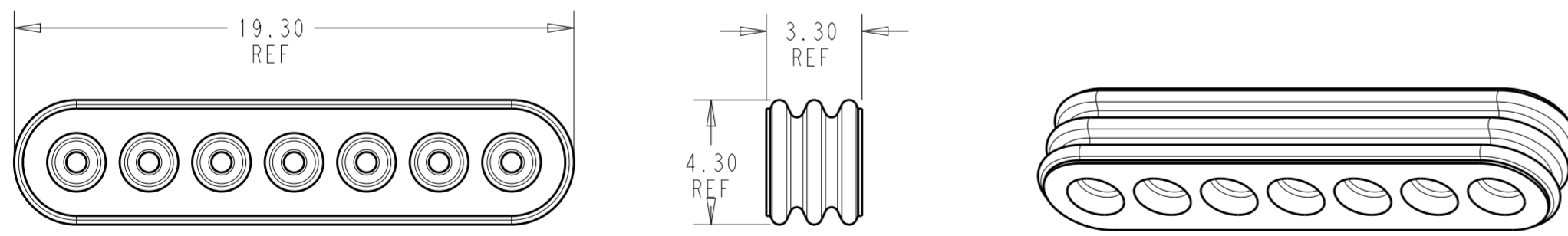
1-4 POSITION



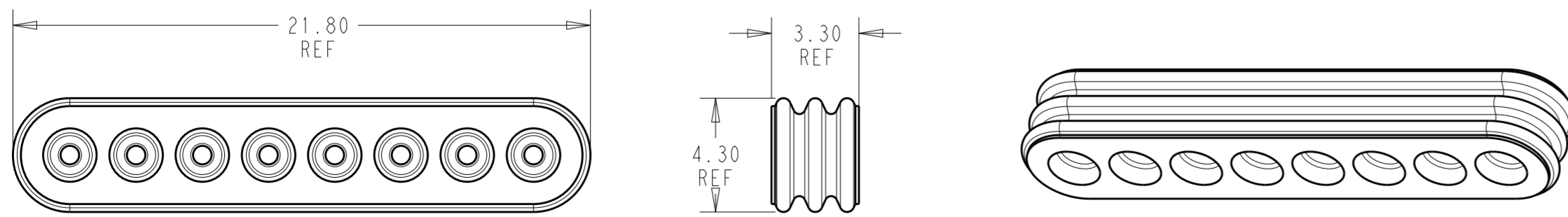
1-5 POSITION



1-6 POSITION



1-7 POSITION



1-8 POSITION

1 MATERIAL: SILICONE RUBBER, INHERENTLY LUBRICATED  
COLOR: BLUE

2. FOR USE WITH 26 TO 22 AWG WIRE, INSULATION DIAMETER 1.30-1.60mm

3. MATING CONNECTOR P/N'S:  
CAP HSG - 2321926-\*/2321924-\*/2329544-  
PLUG HSG - 2321918-\*/2329541-\*

4 PRELIMINARY PART - NOT RELEASED FOR PRODUCTION

1*8	4 2321922-8
1*7	4 2321922-7
1*6	2321922-6
1*5	2321922-5
1*4	2321922-4
1*3	2321922-3
1*2	2321922-2
POSITIONS	PART NUMBER

THIS DRAWING IS A CONTROLLED DOCUMENT.

DIMENSIONS:	TOLERANCES UNLESS OTHERWISE SPECIFIED:	DWN	01FEB2019	 TE Connectivity	
mm	0 PLC ±	CHK	B. WEAVER 01FEB2019		
	1 PLC ±	APVD	C. YI 01FEB2019		
	2 PLC ±	PRODUCT SPEC	C. YI 01FEB2019		
	3 PLC ±	APPLICATION SPEC	108-143069	NAME	REAR GANG SEAL, SDL 2.5 WATERPROOF
	4 PLC ±	WEIGHT	114-143067	SIZE	A2
MATERIAL	FINISH	CUSTOMER DRAWING		CAGE CODE	00779
		SCALE	5:1	DRAWING NO	G-2321922
		SHEET	1	RESTRICTED TO	
		OF	1	REV	A

## X-ON Electronics

Largest Supplier of Electrical and Electronic Components

*Click to view similar products for [Headers & Wire Housings](#) category:*

*Click to view products by [TE Connectivity](#) manufacturer:*

Other Similar products are found below :

[892-18-020-10-001101](#) [58102-G61-06LF](#) [582553-1](#) [0009485154](#) [009176003701906](#) [0050291907](#) [LY20-4P-DT1-P1E-BR](#) [02.125.8002.8](#)  
[609-3404](#) [61062-3](#) [61082-181009](#) [622-3653LF](#) [63453-116](#) [636-1030](#) [636-1427](#) [636-3427](#) [636-4007](#) [641938-9](#) [641991-4](#) [644827-2](#) [65817-](#)  
[010LF](#) [65817-015LF](#) [65863-015LF](#) [66207-023LF](#) [67095-007LF](#) [67601157](#) [68645-018](#) [68648-049](#) [70.362.1628.0](#) [70-4210](#) [70-4226B](#) [70-](#)  
[4853B](#) [707-5020](#) [707-5028](#) [71.350.2428.0](#) [71918-208LF](#) [71961-016LF](#) [733-134](#) [733-162](#) [754199-000](#) [760-3052](#) [787-8014-00](#) [79531-3000](#)  
[FCN-360C032-B](#) [FCN-367T-T012/H](#) [FCN-723D010/2](#) [80.063.4001.1](#) [800-90-001-10-001000](#) [800-90-010-10-002000](#) [801-43-002-10-013000](#)