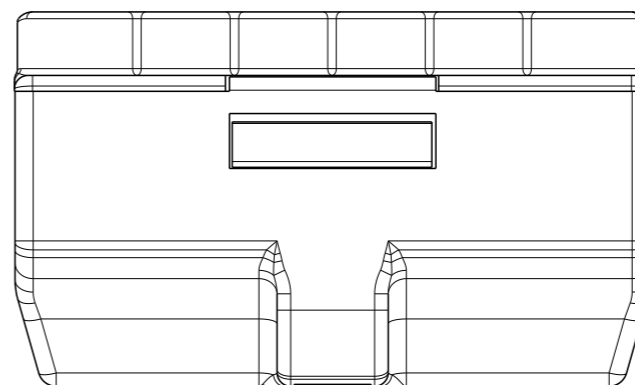
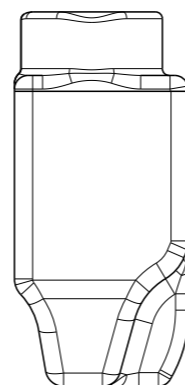
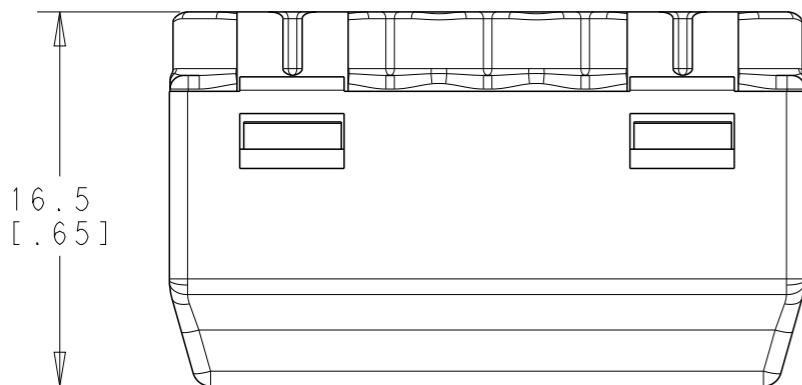
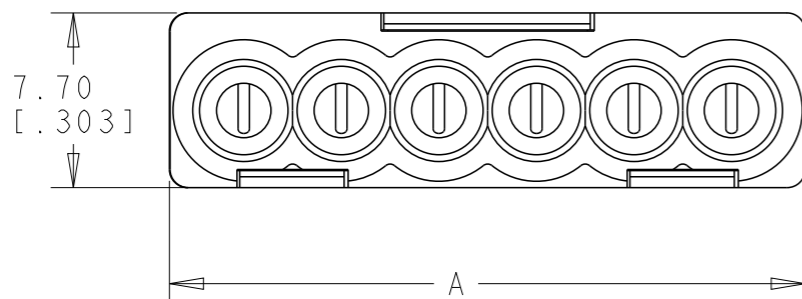


REVISIONS

P	LTR	DESCRIPTION	DATE	DWN	APVD
A		RELEASED FOR PRODUCTION	18OCT2017	SK	MZ
B		REVISED PER ECR-18-002795	07MAR2018	RS	CVS


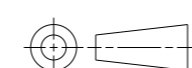
2324697-6 AS SHOWN



NOTES:

- HOUSING MATERIAL: UL 94V-0 POLYCARBONATE.
- TERMINAL INSERT: (1) TIN PLATED COPPER
(2) SPRING PLATE: STEEL.
- VOLTAGE: 600V (UL), 450V (IEC).
- CURRENT: 24A (IEC).
- WORKING TEMPERATURE: 85° (IEC), 105°C (UL).
- WIRE RANGE:
0.5-2.5mm² RIGID SOL. / 1.0-2.5mm² RIGID STR. (IEC)
22-12AWG, SOL. Cu / 18-12AWG, STR. Cu /
22-14AWG, TIN-DIPPED STR. Cu (UL)
- STRIPPING LENGTH: 11.0[.43].

PURPLE	28.0 [1.100]	6	2324697-6
BLUE	23.7 [.933]	5	2324697-5
CLEAR	19.4 [.764]	4	2324697-4
ORANGE	15.1 [.594]	3	2324697-3
YELLOW	10.8 [.425]	2	2324697-2
COLOR	DIM "A"	NO. POSITION	TE PART NUMBER

THIS DRAWING IS A CONTROLLED DOCUMENT.		DWN 06SEP2017 SHIVAKUMAR	 TE Connectivity		
DIMENSIONS: mm[INCHES]		CHK 06SEP2017 MARCO ZUCCA			
TOLERANCES UNLESS OTHERWISE SPECIFIED:		APVD 06SEP2017 MARCO ZUCCA	NAME COMPACT PUSH GRIP CONNECTOR		
		PRODUCT SPEC 108-133070	RESTRICTED TO		
0 PLC ±- 1 PLC ±0.4 2 PLC ±0.20 3 PLC ±- 4 PLC ±- ANGLES ±-		APPLICATION SPEC 114-133071	SIZE A3	CAGE CODE 00779	DRAWING NO C-2324697
MATERIAL NOTES 1 AND 2		FINISH TIN PLATED COPPER	WEIGHT SEE TABLE	SCALE 3:1	SHEET 1 OF 2
		CUSTOMER DRAWING	REV B		

THIS DRAWING IS UNPUBLISHED.

RELEASED FOR PUBLICATION

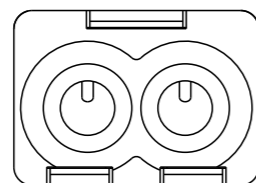
20

© COPYRIGHT 20 BY -

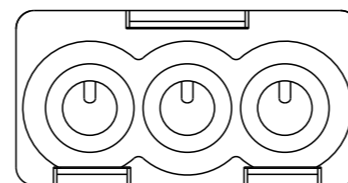
ALL RIGHTS RESERVED.

REVISIONS

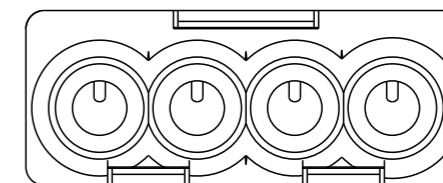
P	LTR	DESCRIPTION	DATE	DWN	APVD
-		SEE SHEET 1	-	-	-



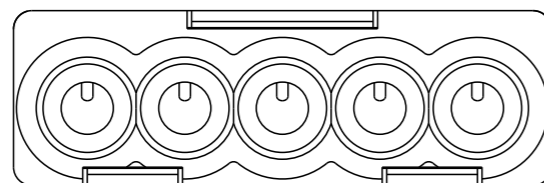
2324697-2 AS SHOWN



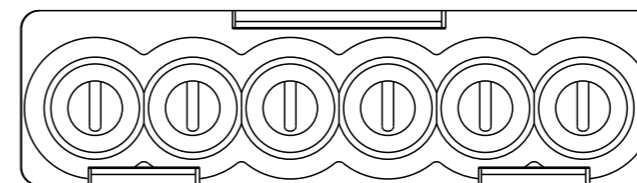
2324697-3 AS SHOWN



2324697-4 AS SHOWN



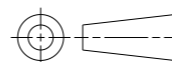
2324697-5 AS SHOWN



2324697-6 AS SHOWN

THIS DRAWING IS A CONTROLLED DOCUMENT.

DIMENSIONS:
mm [INCHES]



TOLERANCES UNLESS OTHERWISE SPECIFIED:

0 PLC	±-
1 PLC	±0.4
2 PLC	±0.20
3 PLC	±-
4 PLC	±-
ANGLES	±-

MATERIAL

NOTES
1 AND 2

FINISH

TIN PLATED
COPPER

DWN 06SEP2017

SHIVAKUMAR

CHK 06SEP2017

MARCO ZUCCA

APVD 06SEP2017

MARCO ZUCCA

PRODUCT SPEC

108-133070

APPLICATION SPEC

114-133071

WEIGHT

SEE TABLE

CUSTOMER DRAWING



TE Connectivity

NAME
COMPACT PUSH GRIP
CONNECTOR

SIZE	CAGE CODE	DRAWING NO	RESTRICTED TO
------	-----------	------------	---------------

A3	00779	C-2324697
----	-------	-----------

SCALE	SHEET	OF	REV
3:1	2	2	B

X-ON Electronics

Largest Supplier of Electrical and Electronic Components

Click to view similar products for [Terminals](#) category:

Click to view products by [TE Connectivity](#) manufacturer:

Other Similar products are found below :

[00-054007-01074-6](#) [00-054007-70206-1](#) [00-054007-70210-8](#) [00-054007-70217-7](#) [00-054007-70226-9](#) [00-054007-70228-3](#) [00-054007-70248-1](#) [00-054007-70256-6](#) [00-054007-70301-3](#) [00-054007-70316-7](#) [00-054007-49560-4](#) [00-054007-70209-2](#) [00-054007-70225-2](#) [00-054007-70227-6](#) [00-054007-70231-3](#) [00-054007-70241-2](#) [00-054007-70242-9](#) [00-054007-70244-3](#) [00-054007-70246-7](#) [00-054007-70263-4](#) [00-054007-70288-7](#) [00-054007-70290-0](#) [00-054007-70300-6](#) [00-054007-70304-4](#) [01-2065-1-0216](#) [01-2900-1-04412](#) [00581P0075](#) [600TS-10](#) [60205-1](#) [604200-1](#) [605601-1](#) [60598-1-CUT-TAPE](#) [61314-6-C](#) [61810-3](#) [61-S](#) [61-SN](#) [626-0194](#) [62-NBM-A](#) [62-SN](#) [62-SP](#) [63-S](#) [640179-1](#) [M55155/059I03](#) [M55155/079C01](#) [M55155/099H02](#) [M55155/109H01](#) [M55155/109H02](#) [M55155/12XH05](#) [M55155/16XH02](#) [M55155/29-5S](#)