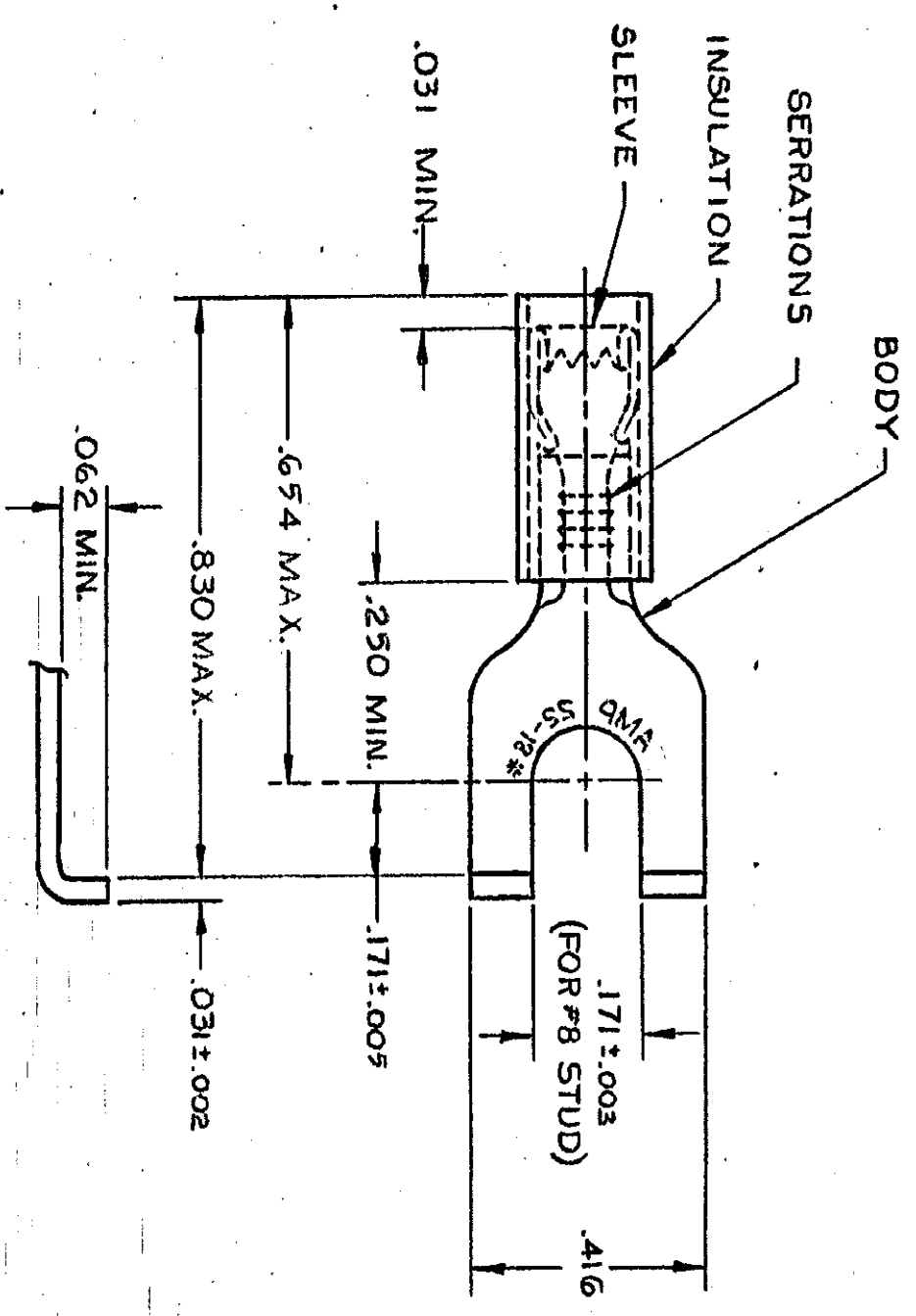


THIS DRAWING IS UNPUBLISHED. RELEASED FOR PUBLICATION  
 © COPYRIGHT 19 BY AMP INCORPORATED, HARRISBURG, PA. ALL INTERNATIONAL RIGHTS RESERVED. AMP PRODUCTS MAY BE COVERED BY U.S. AND FOREIGN PATENTS AND/OR PATENTS PENDING.



1. WIRE INSULATION DIA. = .080-.125
  2. 22-18 MARKING FOR MILITARY COMMERCIAL RANGE 22-16
- △ TIN PLATE MIL-T-10727 .000100 MIN THK.

REVISIONS		DESCRIPTION	DATE	APPROVED
P	F	REDRAWN-REV. PER G-1475, G-1175,	10/80	Bin
✓	✓	P85-0033 & P85-0034		
✓	✓	OBSOLETE 2--3 PER G-2393		
✓	✓	REV PER G-4732		
✓	✓	OBS 2--2 PER G-3779		
✓	✓	REV PER G-5411		

**OBSOLETE**

QUANTITY	DESCRIPTION	PART NO
100	ON TAPE, LG. BOX	<del>32497-3</del>
1000	ON TAPE, REEL	<del>32497-1</del>
---	LOOSE PIECE	32497

UNLESS OTHERWISE SPECIFIED DIMENSIONS ARE IN INCHES. TOLERANCES ON: DECIMALS ± .005 ANGLES ±

MATERIAL INSULATION: NYLON - RED BODY & SLEEVE; COPPER (QQ-C-576)

FINISH BODY - △ 3

CONTRACT NO: UTA/RFB 9-19-85

CHK: [Signature] 1/9/80

APPR: [Signature] 1/9/80

APPO: [Signature]

BSGN APPO: [Signature]

OTHER APPO: [Signature]

NAME: **AMP** | AMP INCORPORATED Harrisburg, Pa.

TERMINAL, SPADE

P.I.D.G. FLANGED SPADE

WIRE SIZE: 22-16

SIZE: **B**

FSCM NO: **00779**

DRAWING NO: **32497**

SCALE: NTS

SHEET: 1 OF 1

## X-ON Electronics

Largest Supplier of Electrical and Electronic Components

*Click to view similar products for [Terminals](#) category:*

*Click to view products by [TE Connectivity](#) manufacturer:*

Other Similar products are found below :

[00-054007-01074-6](#) [00-054007-70206-1](#) [00-054007-70210-8](#) [00-054007-70217-7](#) [00-054007-70226-9](#) [00-054007-70228-3](#) [00-054007-70248-1](#) [00-054007-70256-6](#) [00-054007-70301-3](#) [00-054007-70316-7](#) [00-054007-49560-4](#) [00-054007-70209-2](#) [00-054007-70225-2](#) [00-054007-70227-6](#) [00-054007-70231-3](#) [00-054007-70241-2](#) [00-054007-70242-9](#) [00-054007-70244-3](#) [00-054007-70246-7](#) [00-054007-70263-4](#) [00-054007-70288-7](#) [00-054007-70290-0](#) [00-054007-70300-6](#) [00-054007-70304-4](#) [01-2065-1-0216](#) [01-2900-1-04412](#) [00581P0075](#) [600TS-10](#) [60205-1](#) [604200-1](#) [605601-1](#) [60598-1-CUT-TAPE](#) [61314-6-C](#) [61810-3](#) [61-S](#) [61-SN](#) [626-0194](#) [62-NBM-A](#) [62-SN](#) [62-SP](#) [63-S](#) [640179-1](#) [M55155/059I03](#) [M55155/079C01](#) [M55155/099H02](#) [M55155/109H01](#) [M55155/109H02](#) [M55155/12XH05](#) [M55155/16XH02](#) [M55155/29-5S](#)