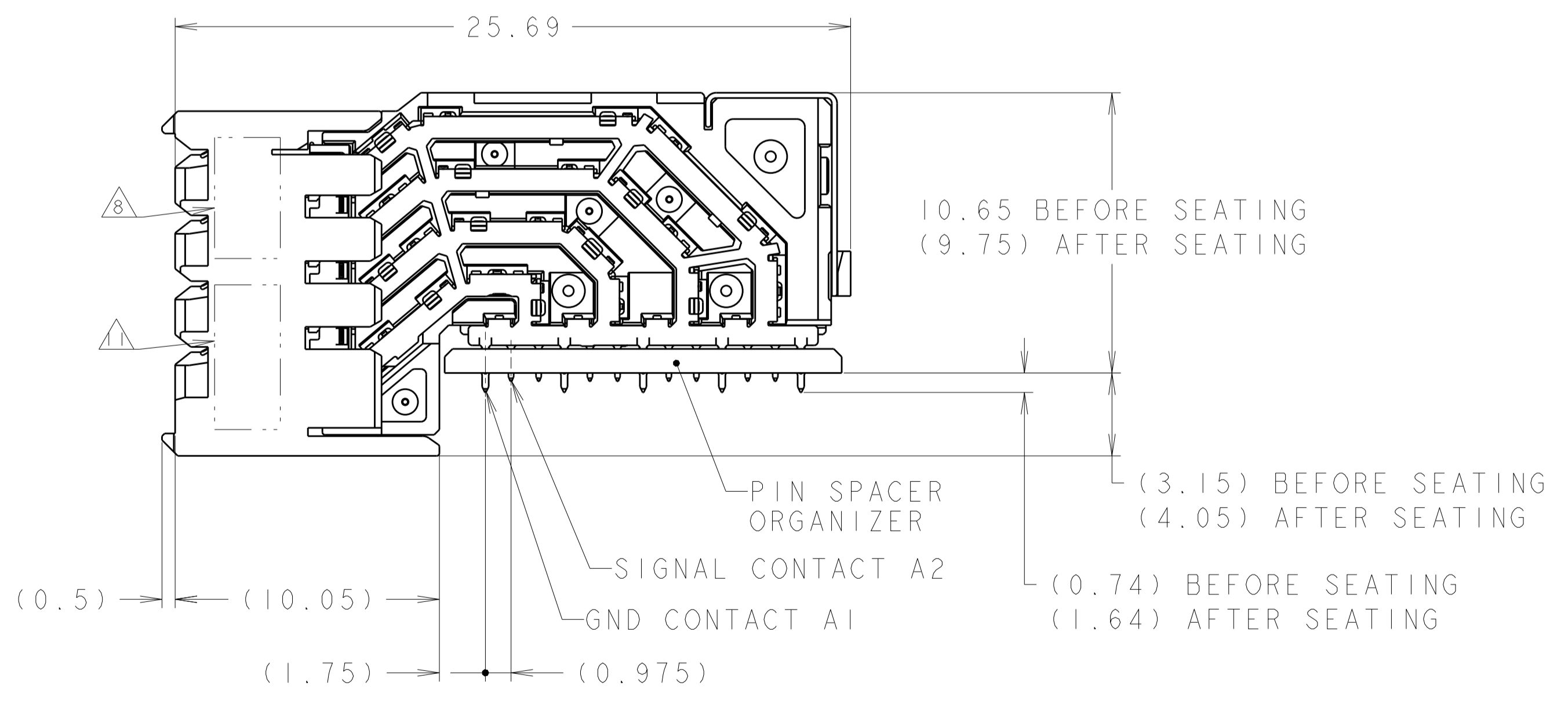
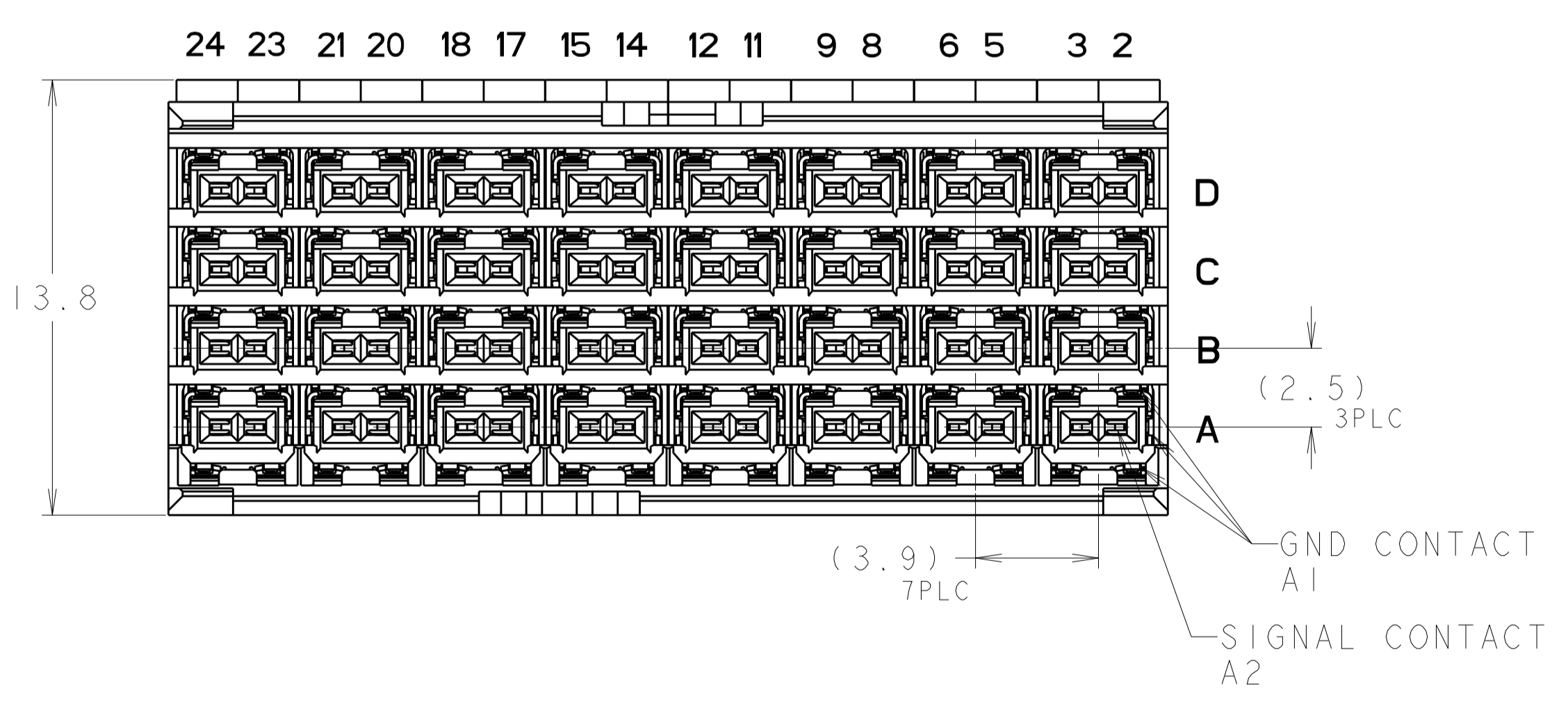
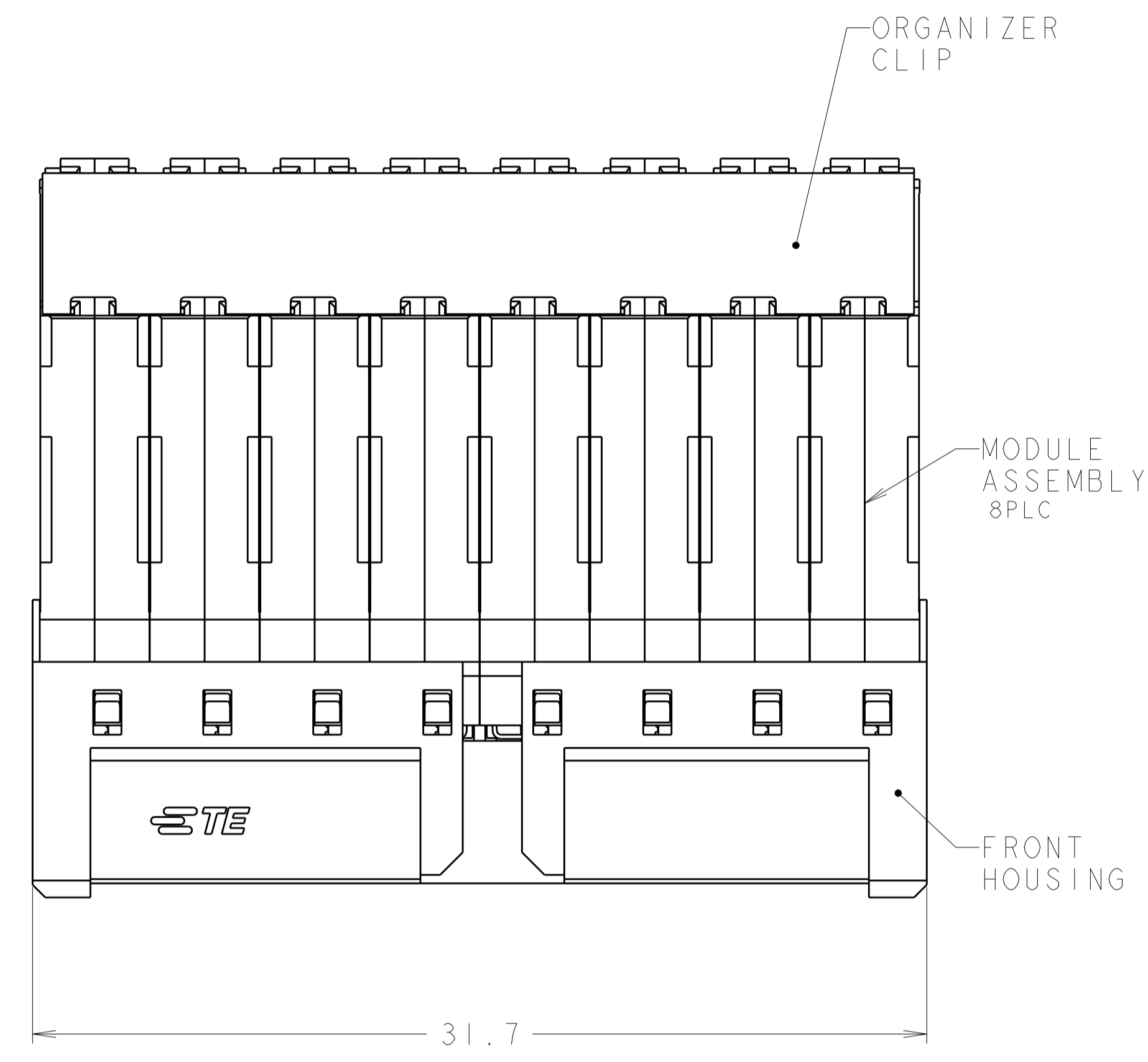


REVISIONS					
P.	LTN	DESCRIPTION	DATE	DMN	APVD
A		RELEASED	16DEC2018	Y.K	T.M
A1		REVISED	24DEC2019	Y.K	T.M

- 1 CONTACTS AND SHIELDS - COPPER ALLOY
 ORGANIZER - STAINLESS STEEL
 HOUSING AND PIN SPACER - THERMOPLASTIC, UL 94V-0, BLACK
- 2 FINISH:
 CONFORMS TO THE REQUIREMENTS OF TE PRODUCT SPECIFICATION 108-140186
 BASED ON TELCORDIA GR-1217-CORE FOR SYSTEM QUALITY LEVEL III,
 APPLICATIONS IN CONTROLLED ENVIRONMENTS (CENTRAL OFFICE).
 COMPLIANT PIN AREA : 0.5um MIN MATTE TIN.
- 3 GROUND PLATED THRU HOLE REQUIREMENTS:
 FINISHED HOLE = $\varnothing 0.37 \pm 0.05$
 HOLE SIZE PRIOR TO PLATING = $\varnothing 0.450 \pm 0.025$
 COPPER THICKNESS = 0.025 MIN
 IMMERSION TIN IF APPLICABLE = (0.00095)
- 4 SIGNAL PLATED THRU HOLE REQUIREMENTS:
 FINISHED HOLE = $\varnothing 0.29 \pm 0.05$
 HOLE SIZE PRIOR TO PLATING = $\varnothing 0.37 \pm 0.025$ (#79 DRILL)
 COPPER THICKNESS = 0.025 MIN
 IMMERSION TIN IF APPLICABLE = (0.00095)
- 5 SI VIA PLATED THRU HOLE REQUIREMENTS:
 FINISHED HOLE = AS REQUIRED
 HOLE SIZE PRIOR TO PLATING = $\varnothing 0.254 \pm 0.025$
 COPPER THICKNESS = 0.025 MIN
 IMMERSION TIN IF APPLICABLE = (0.00095)
- 6 SIGNAL HOLES AND SI VIAS:
 PTH DIMENSIONS APPLY TO THE TOP 1.00mm OF THE PCB THICKNESS FROM THE CONNECTOR MOUNTING SIDE.
 GROUND HOLES:
 PTH DIMENSIONS APPLY TO THE TOP 1.25mm OF THE PCB THICKNESS FROM THE CONNECTOR MOUNTING SIDE.
- 7 CONNECTOR MARKED WITH PART NUMBER, DATE CODE, AND "92 OHM" IN APPROXIMATE AREA SHOWN.
- 8 DATUMS AND BASIC DIMENSIONS ESTABLISHED BY CUSTOMER
- 9 APPLIES TO FINISHED HOLE DIAMETER
- 10 DATAMATRIX BARCODE MARKING IN THIS AREA.

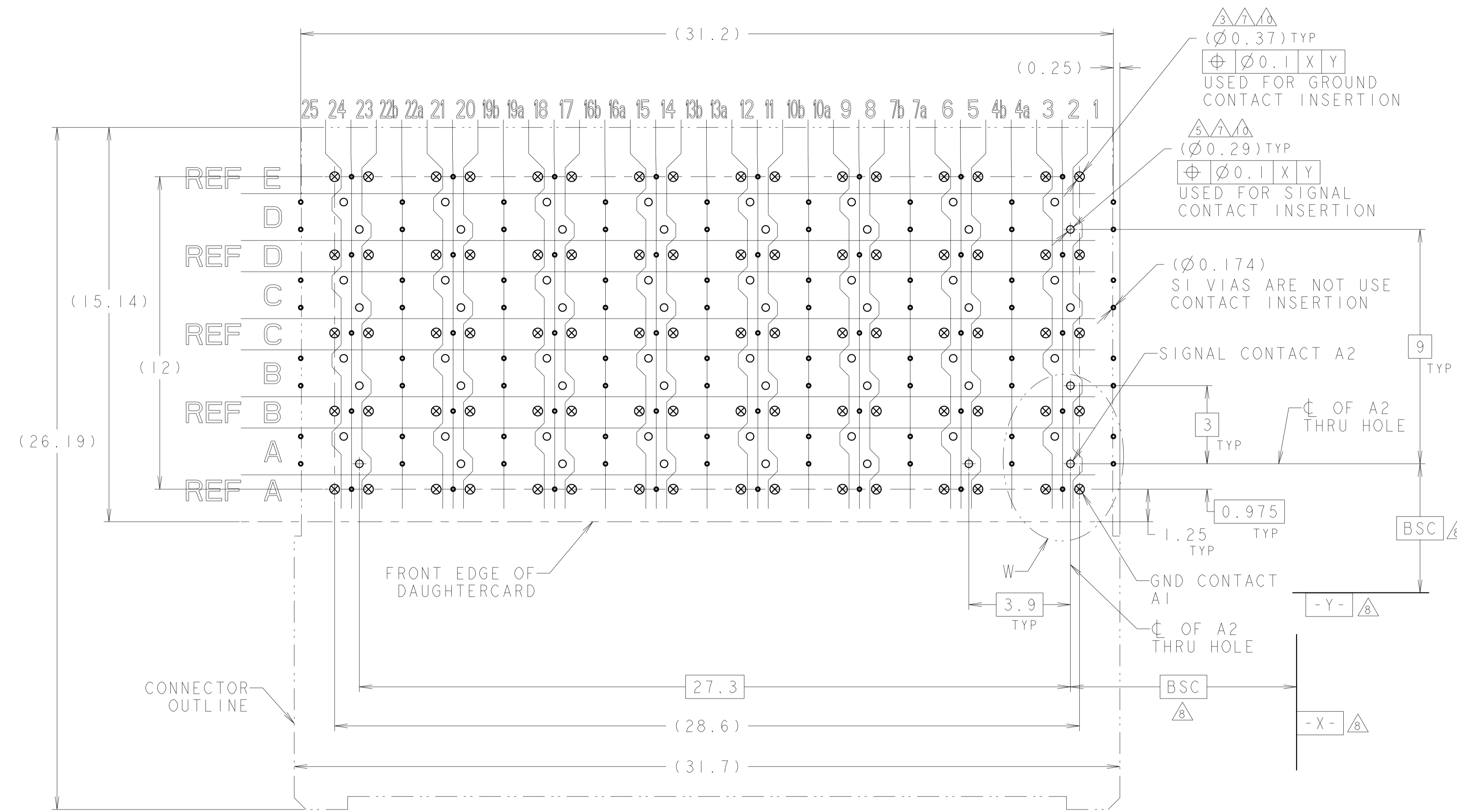


2329739-1
 PART NO

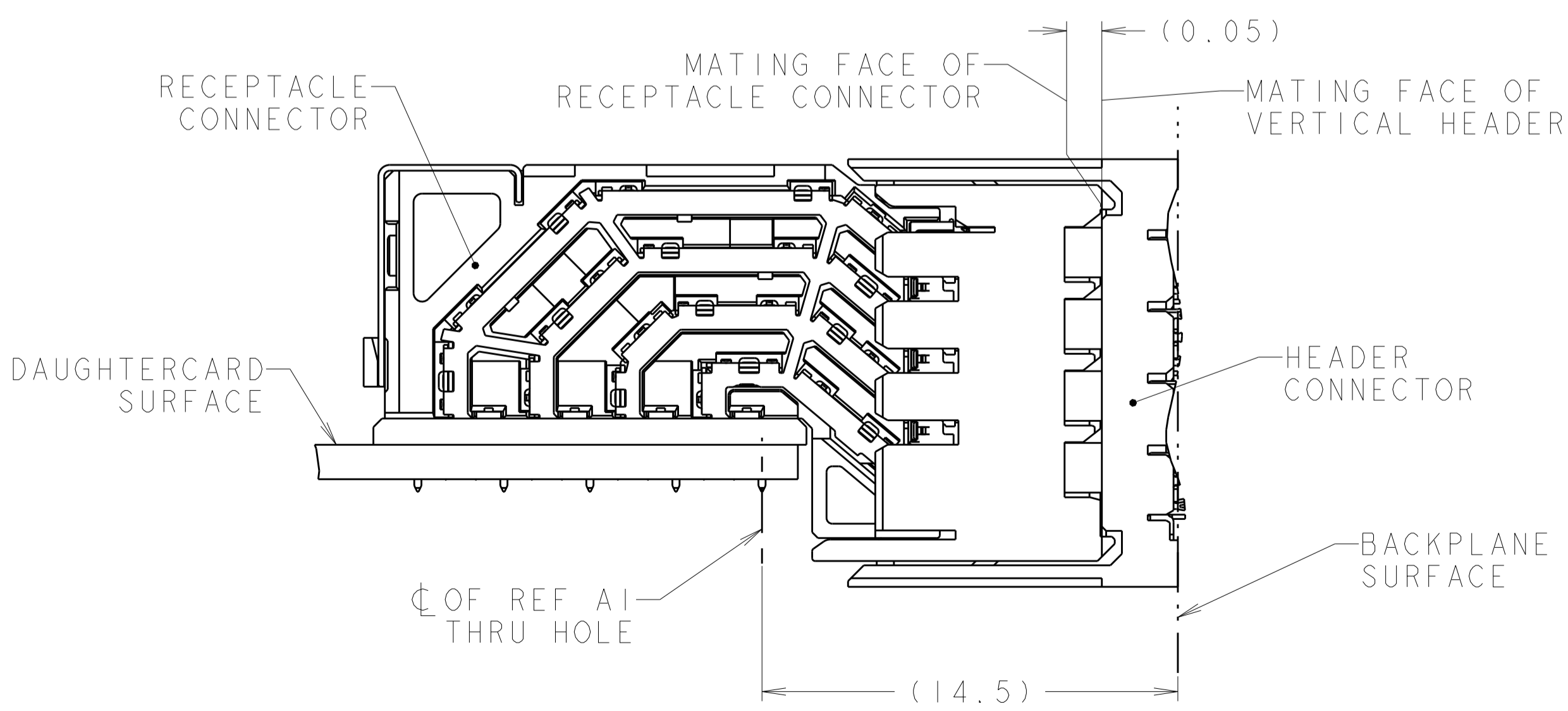
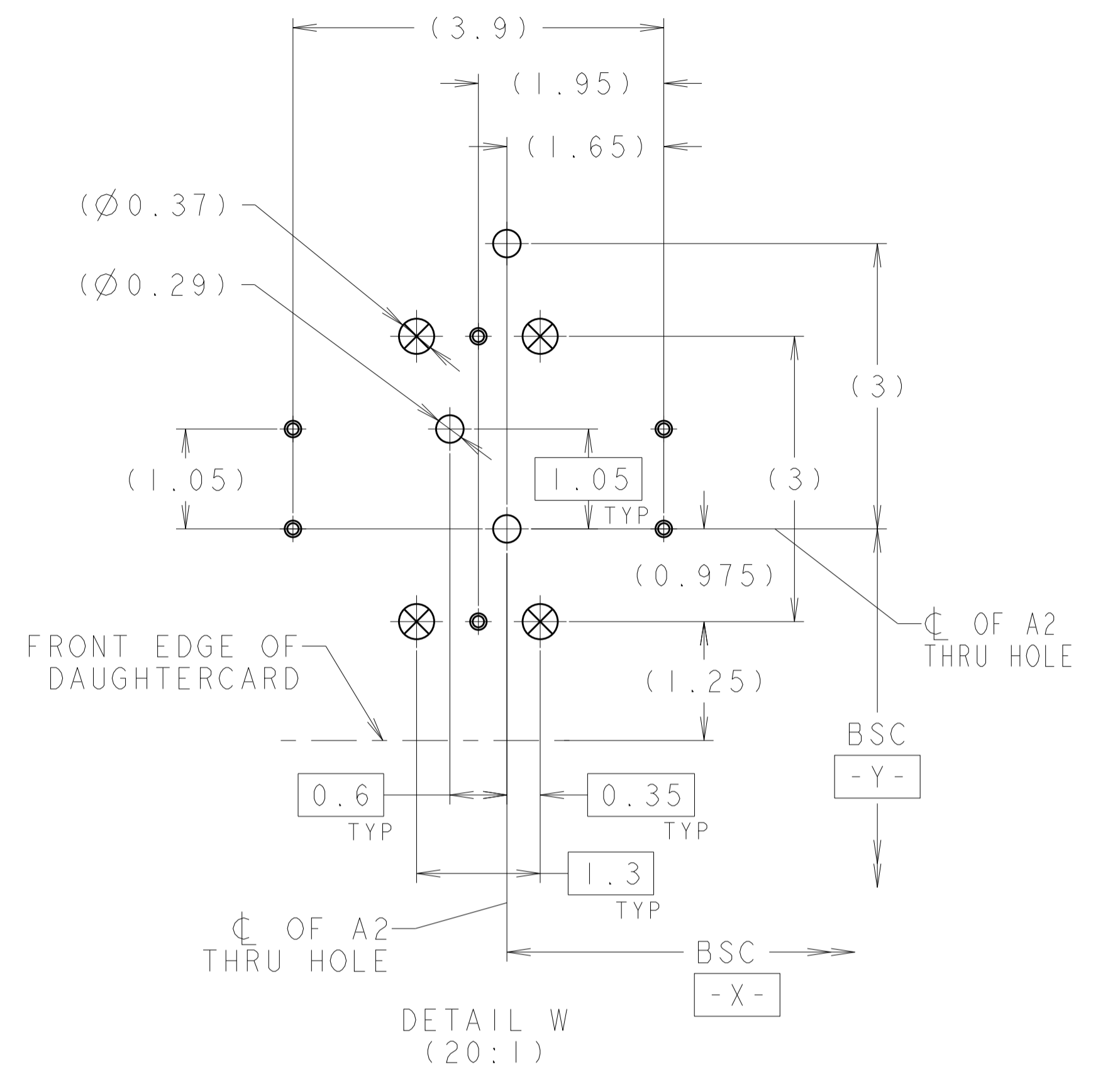
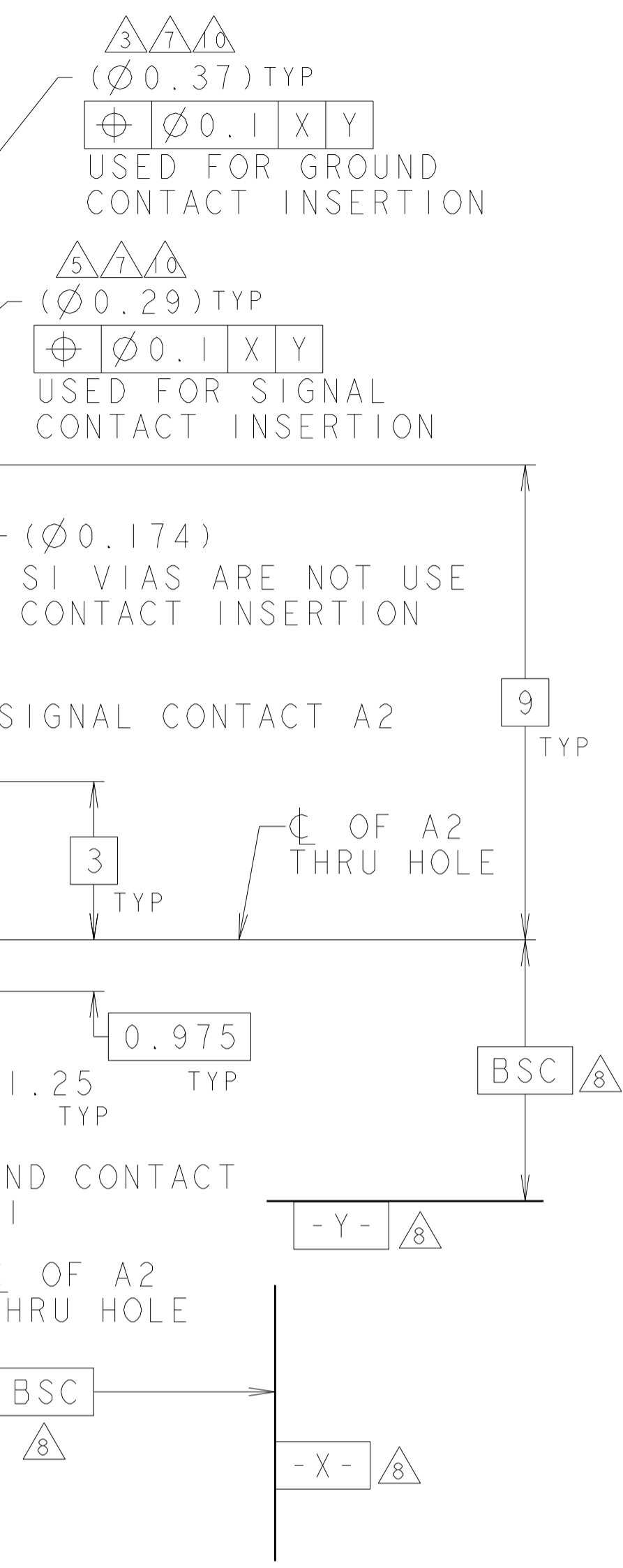
THIS DRAWING IS A CONTROLLED DOCUMENT.		DMN Y. KODAIRA 10JAN2018	TE Connectivity	
DIMENSIONS:		CHK M. IWASAKI 10JAN2018	NAME RIGHT ANGLE RECEPTACLE ASSEMBLY	
TOLERANCES UNLESS OTHERWISE SPECIFIED:		APVD T. MATSUDAIRA 10JAN2018	PRODUCT SPEC 108-140186	
mm		APPLICATION SPEC	SIZE A1	
0 PLC ± 0.3		114-32029	CAGE CODE 0079	
1 PLC ± 0.3		WEIGHT	DRAWING NO 2329739	
2 PLC ± 0.3		FINISH	RESTRICTED TO	
3 PLC ± 0.3			CUSTOMER DRAWING	
4 PLC ± 0.3			SCALE 6:1	
ANGLES ± 0.3			SHEET 1 OF 2	
FINISH ± 0.3			REV A1	

REVISIONS				
REV	DATE	BY	CHK	APVD
1				
2				
3				
4				
5				
6				
7				
8				

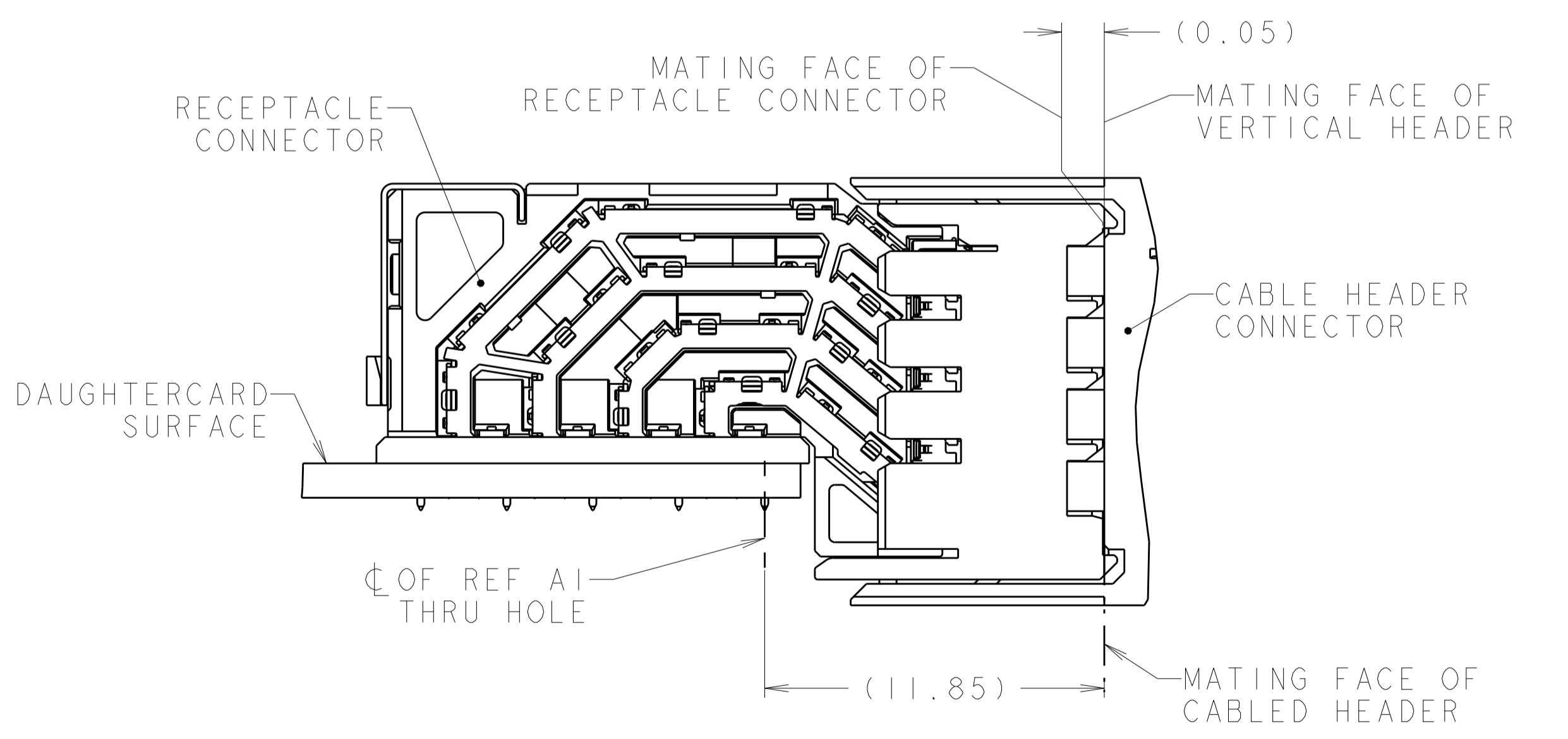
- = SIGNAL
- ⊗ = GROUND
- ⊙ = SIGNAL INTEGRITY VIA TO GROUND



RECOMMENDED PCB LAYOUT
 COMPONENT SIDE SHOWN
 SCALE 10:1



MIDPLANE APPLICATIONS
 MATED ASSEMBLY (PARTIAL VIEW)



CABLED HEADER APPLICATIONS
 MATED ASSEMBLY (PARTIAL VIEW)

THIS DRAWING IS A CONTROLLED DOCUMENT.		DWN	TE Connectivity
DIMENSIONS: mm		CHK	
TOLERANCES UNLESS OTHERWISE SPECIFIED:		APVD	NAME RIGHT ANGLE RECEPTACLE ASSEMBLY 4 PAIR 8 COLUMN, 92 OHM, PAIR-IN-ROW, STRADA WHISPER R
0 PLC ±0.3 1 PLC ±0.3 2 PLC ±0.3 3 PLC ±0.3 4 PLC ±0.3 ANGLES ±0.3°		PRODUCT SPEC	
MATERIAL		APPLICATION SPEC	SIZE CAGE CODE DRAWING NO A1 0079 C=2329739
FINISH		WEIGHT	
		CUSTOMER DRAWING	RESTRICTED TO
		SCALE 1:1	SHEET 2 OF 2
			REV A1

X-ON Electronics

Largest Supplier of Electrical and Electronic Components

Click to view similar products for [High Speed/Modular Connectors](#) category:

Click to view products by [TE Connectivity](#) manufacturer:

Other Similar products are found below :

[650827-1](#) [74040-1346](#) [1410191-1](#) [1410368-3](#) [1410964-2](#) [1410326-3](#) [1410367-3](#) [1410971-4](#) [1467833-1](#) [2000877-1](#) [2000878-1](#) [2041314-1](#)
[2065387-1](#) [2187307-1](#) [163P](#) [1934290-1](#) [2000875-1](#) [2065917-1](#) [2102736-2](#) [FSR-40](#) [2169868-2](#) [22354-8](#) [437-5040-000](#) [5-1393565-0](#) [039-](#)
[0246-000](#) [0761601016](#) [0784461022](#) [10123159-12ELF](#) [030-2415-003/100 PK](#) [030-7380-004](#) [030-2494-001](#) [532939-1](#) [5532901-3](#) [3-1469268-](#)
[7](#) [74748-102LF](#) [10041743-101LF](#) [10066670-100002LF](#) [1-533915-1](#) [249-4515-000](#) [7-1469373-3](#) [DL2-2J/S](#) [2000713-8](#) [2000713-7](#)
[10124313-101LF](#) [3011-21](#) [757105208](#) [EBTF-4-10-2.0-S-RA-1](#) [430305-001](#) [4395800100](#) [8140115](#)