

THIS DRAWING IS UNPUBLISHED.

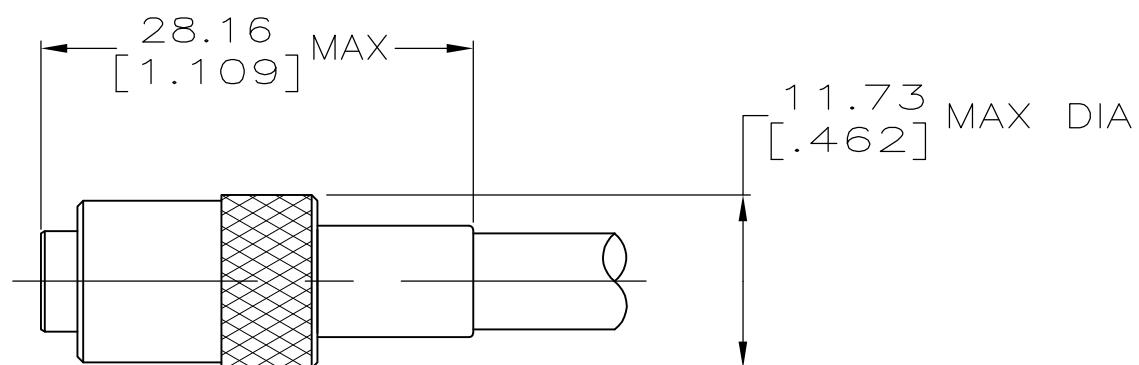
RELEASED FOR PUBLICATION

REVISIONS

© COPYRIGHT - By -

ALL RIGHTS RESERVED.

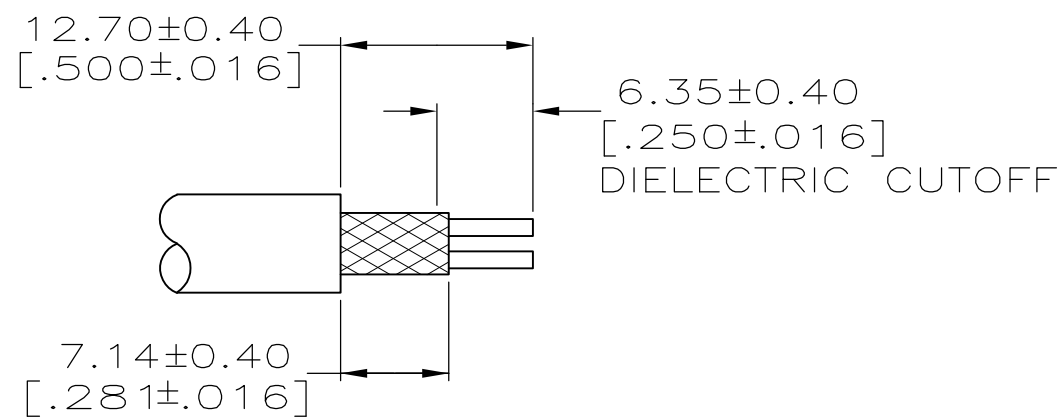
P	LTR	DESCRIPTION	DATE	DWN	APVD
	S2	REVISED PER ECO-16-010009	06JUL2016	LN	RS



1 SEE I.S. 1833



USE CRIMPING TOOL: 69311-1, 69710 OR 69365-2. (USE DIE 69410-1 FOR TOOL 69710 OR 69365-2)



RECOMMENDED STRIP LENGTH

BELDEN 8451, 8641 AND 8761	69311-1	7-329944-3
BELDEN 9271	69311-1	2-329944-7
BELDEN 9271	69311-1	2-329944-6
SUPERSEDED BY 2-329944-3 BELDEN 8451,8641,8737 AND 8761	△	2-329944-4
BELDEN 8451,8641 AND 8761	69311-1	2-329944-3
BELDEN 8737(SPIRAL WRAPPED SHIELD)	69311-1	2-329944-1
FOR USE WITH CABLE:	CRIMPING TOOL	PART NUMBER

THIS DRAWING IS A CONTROLLED DOCUMENT.

DWN B. WERNER 8-19-92

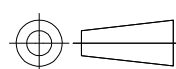
CHK G. MICHAEL 8-19-92

APVD G. MICHAEL 8-19-92



DIMENSIONS:
INCHES

TOLERANCES UNLESS
OTHERWISE SPECIFIED:



0 PLC	± -
1 PLC	± -
2 PLC	± -
3 PLC	± -
4 PLC	± -
ANGLES	± -
FINISH	-

PRODUCT SPEC

APPLICATION SPEC

WEIGHT 0

NAME

TWIN THREADED PLUG

SIZE CAGE CODE DRAWING NO RESTRICTED TO

A3 00779 C-329944

CUSTOMER DRAWING SCALE 2:1 SHEET 1 OF 1 REV S2

X-ON Electronics

Largest Supplier of Electrical and Electronic Components

Click to view similar products for [Barrier Terminal Blocks](#) category:

Click to view products by [TE Connectivity](#) manufacturer:

Other Similar products are found below :

[CR151D20104](#) [670A-RZ-15-KT20](#) [6C1N03](#) [6PCR-02](#) [6PCR-02-008](#) [6PCR-05-008](#) [6PCR-08-008](#) [6PCR-09-008](#) [6PCR-13-006](#) [6PCR-15-006](#) [6PCR-21-006](#) [6PCV-06-008](#) [6PCV-06-716](#) [6PCV-09-001](#) [6PCV-10-009](#) [6PCV-15-008](#) [6PCV-17-1206](#) [6PCV-20-323](#) [6PCV-20-720](#) [6PCV-30-006](#) [6STR-06-006](#) [6STR-08-006](#) [6STR-12-008](#) [6STR-13-006](#) [6STR-14-008](#) [6STR-16-008](#) [6STR-17-008](#) [6STR-21-008](#) [6STR-25-008](#) [6STR-27-008](#) [6STV-03-006](#) [6STV-03-008](#) [6STV-04-006](#) [6STV-09-006](#) [6STV-10-006](#) [6WWR-03-693](#) [6WWV-12-008](#) [72212603](#) [72504-C-50](#) [72506-C](#) [72507-C-50](#) [73203](#) [75505-C](#) [75505-C-50](#) [75510-C](#) [77010-50](#) [7C1N08](#) [812-GP-3/4ST-09](#) [8-1437402-5](#) [8-1437402-7](#)