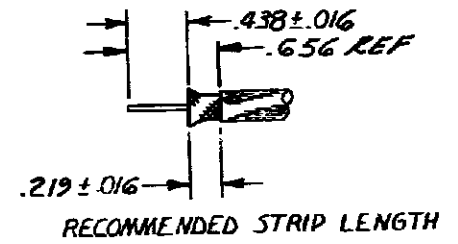
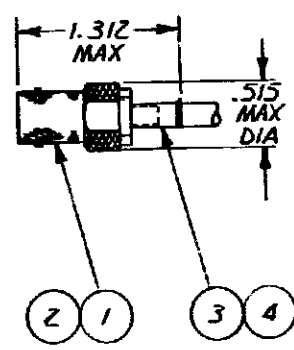


DRAWING MADE IN THIRD ANGLE PROJECTION

REVISIONS			
P	F	DESCRIPTION	DATE
✓	✓	C REDWN ECN CBZ-514	11-17-82
			APPROVED <i>JLP</i>

2-330062-1
 THIS DRAWING IS UNPUBLISHED
 RELEASED FOR PUBLICATION
 BY AMP INCORPORATED, HARRISBURG, PA. ALL INTERNATIONAL RIGHTS
 RESERVED. AMP PRODUCTS MAY BE COVERED BY U.S. AND FOREIGN PATENTS AND/OR PATENTS PENDING.
 © COPYRIGHT 1962

1. FOR USE WITH: RG-174/U & 188/U.
2. USE CRIMPING TOOL: 69245-1.
3. SEE I.S. 1799-2



ITEM	QTY	DESCRIPTION	PART NO
4	1	FERRULE	328666
3	1	CRIMP END ASSY	50793-9
2	1	GASKET	2-329106-1
1	1	JACK ASSY - FRONT	329502

UNLESS OTHERWISE SPECIFIED DIMENSIONS ARE IN INCHES. TOLERANCES ON: DECIMALS ±.008 ANGLES ±	CONTRACT NO	AMP AMP INCORPORATED Harrisburg, Pa. 17105	
	DR <i>J. Penney #1782</i>		
	MATERIAL	NAME	CONNECTOR, COAXIAL, R.F., JACK, SERIES BNC
	FINISH	SIZE	A
	OTHER APPD	FSCM NO	00779
		DRAWING NO	2-330062-1
		SCALE	UTS
		SHEET	

X-ON Electronics

Largest Supplier of Electrical and Electronic Components

Click to view similar products for [RF Connectors / Coaxial Connectors](#) category:

Click to view products by [TE Connectivity](#) manufacturer:

Other Similar products are found below :

[8915-1511-000](#) [89674-0827](#) [6001-7071-019](#) [6002-7051-003](#) [6002-7551-202](#) [6059674-1](#) [619550-1](#) [630059-000](#) [M39030/3-01N](#) [6500-7071-046](#) [6769](#) [CX050L2AQ](#) [7002-1541-010](#) [7002-1542-011](#) [7004-1512-000](#) [7009-1511-004](#) [7010-1511-000](#) [7029-1511-060](#) [7101-1541-010](#) [7101-1571-002](#) [7105-1521-002](#) [7145-1521-002](#) [7203-1571-003](#) [7209-1511-011](#) [7210-1511-015](#) [7210-1511-019](#) [73137-5015](#) [73216-2241](#) [73404-2300](#) [7405-1521-005](#) [7405-1521-802](#) [8527](#) [8547](#) [FS11V](#) [877931](#) [9049-9513-000](#) [9074-9513-000](#) [9101-9573-002](#) [910A205F](#) [9130-9573-002](#) [PL11SC-026](#) [PL375-33](#) [PL40-5](#) [PL74C-221](#) [PL75MC-217](#) [PL803-7](#) [1200690078](#) [1-201144-1](#) [R107003010W](#) [R110A172100](#)