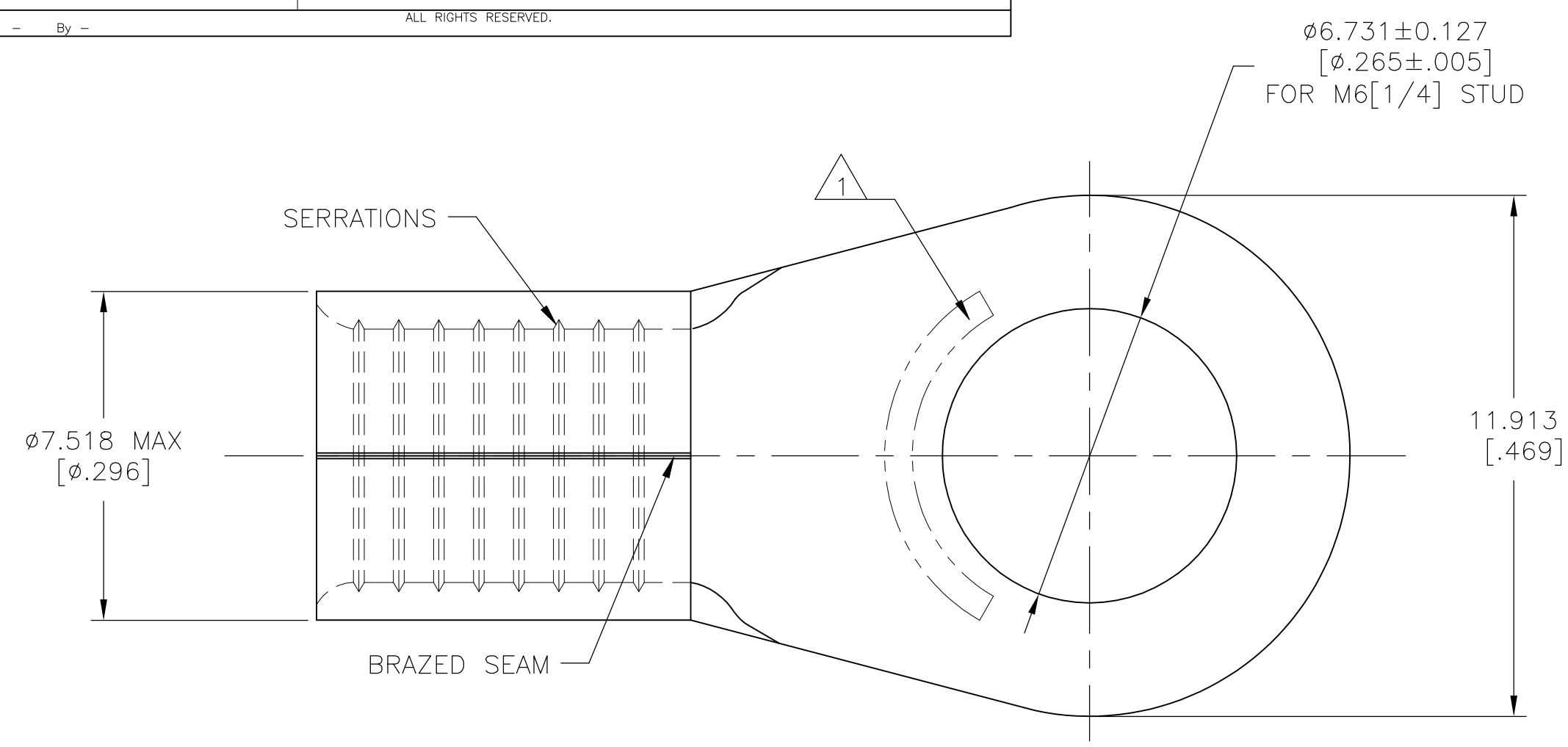


THIS DRAWING IS UNPUBLISHED.  
 RELEASED FOR PUBLICATION  
 ALL RIGHTS RESERVED.

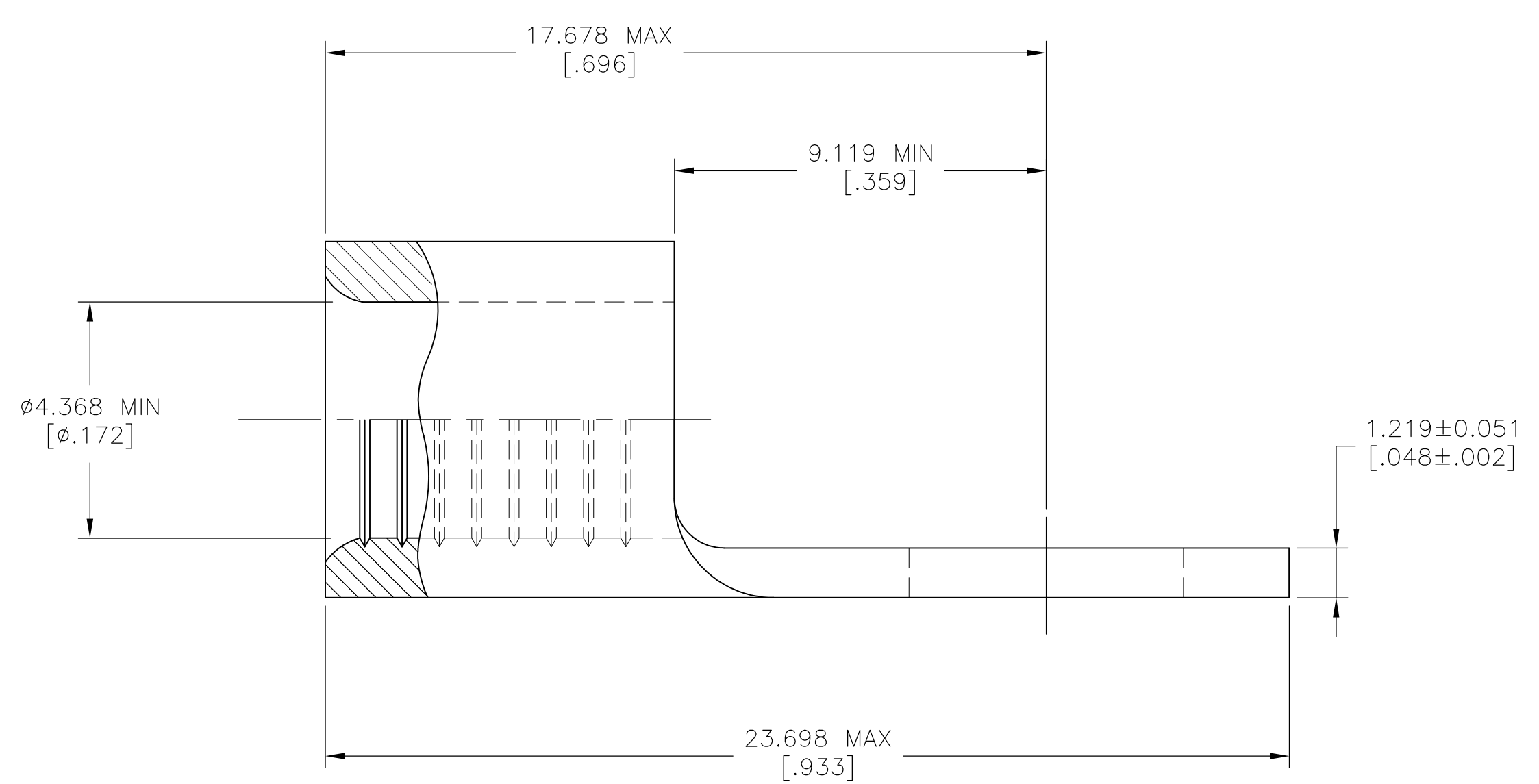
REVISIONS					
P	LTR	DESCRIPTION	DATE	DWN	APVD
	T2	REVISED PER ECO-11-004587	11MAR11	RK	HMR
	T3	REVISED PER ECO-17-008806	15FEB2018	RS	DR



**AMP**  
WIRE RANGE

8 AWG  
SOLID OR STRANDED

- 1 STAMP AMP 8\* APPROX AS SHOWN
- 2 UL LISTED E13288, 8 AWG STRANDED
- 3 CSA CERTIFIED LR7189, 8 AWG SOLID OR STRANDED
- 4 MILITARY MS20659-141 CLASS 2
- 5 SUPERSEDED BY 8-33461-1
- 6 TIN PLATE 0.00254 [.000100] MIN THK PER ASTM B545
- 7 NOTE DELETED
- 9 NOTE DELETED
- 10 UL 486 A-B OR SA7928



2 3	6	100	LOOSE PIECE, BOX	8-33461-1
2 3	6	1000	33461 TAPE MOUNTED ON 30.48[1.200] CENTERS	2-33461-3
2 3 4	6	1500	33461 TAPE MOUNTED ON 15.24[.600] CENTERS	2-33461-2
2 3 4	6	100	LOOSE PIECE	33461
APPROVALS	FINISH	QTY	PACKAGE TYPE	PART NO.

**AMP INCORPORATED**  
CUSTOMER SERVICE SYSTEMS

FOR ADDITIONAL PRODUCT INFORMATION OR COPIES OF DRAWINGS AND TECHNICAL DOCUMENTS	PRODUCT INFORMATION CENTER 1-800-522-6752	MAX RECOMMENDED OPERATING TEMPERATURE: 170°C [338°F] MAX
FOR APPLICATION TOOLING INFORMATION	TOOLING ASSISTANCE CENTER 1-800-722-1111	VOLTAGE RATING: NOT APPLICABLE
FOR ORDER ENTRY	1-800-526-5142	WIRE CROSS SECTIONAL AREA RANGE, 6.6-10.5mm <sup>2</sup> [13,100-20,800] CIR MILS SOLID OR STRANDED

THIS DRAWING IS A CONTROLLED DOCUMENT.

DIMENSIONS: mm [INCHES]	TOLERANCES UNLESS OTHERWISE SPECIFIED:
0 PLC ± -	1 PLC ± -
2 PLC ± -	3 PLC ± 0.127[.005]
4 PLC ± -	ANGLES ± -
MATERIAL COPPER PER ASTM B-152 ANNEALED	FINISH -

DWN TA BRINKMAN 3-24-93  
 CHK DA PATTERSON 3-24-93  
 APVD JL MECKLEY 3-24-93

**STE** TE Connectivity Ltd.

NAME: TERMINAL, RING TONGUE, SOLISTRAND 8 AWG

SIZE: A2 CAGE CODE: 00779 DRAWING NO: C-33461 RESTRICTED TO: -

CUSTOMER DRAWING SCALE: 8:1 SHEET: 1 of 1 REV: T3

## X-ON Electronics

Largest Supplier of Electrical and Electronic Components

*Click to view similar products for [Terminals](#) category:*

*Click to view products by [TE Connectivity](#) manufacturer:*

Other Similar products are found below :

[00-054007-01074-6](#) [00-054007-70206-1](#) [00-054007-70210-8](#) [00-054007-70217-7](#) [00-054007-70226-9](#) [00-054007-70228-3](#) [00-054007-70248-1](#) [00-054007-70256-6](#) [00-054007-70301-3](#) [00-054007-70316-7](#) [0-0320562-0](#) [00-054007-49560-4](#) [00-054007-70209-2](#) [00-054007-70225-2](#) [00-054007-70227-6](#) [00-054007-70231-3](#) [00-054007-70241-2](#) [00-054007-70242-9](#) [00-054007-70244-3](#) [00-054007-70246-7](#) [00-054007-70263-4](#) [00-054007-70288-7](#) [00-054007-70290-0](#) [00-054007-70300-6](#) [00-054007-70304-4](#) [01-2065-1-0216](#) [01-2900-1-04412](#) [00581P0075](#) [600TS-10](#) [60205-1](#) [604200-1](#) [605601-1](#) [60598-1-CUT-TAPE](#) [61314-6-C](#) [61810-3](#) [61-S](#) [61-SN](#) [626-0194](#) [62-NBM-A](#) [62-SN](#) [62-SP](#) [63-S](#) [640179-1](#) [M55155/059I03](#) [M55155/079C01](#) [M55155/099H02](#) [M55155/109H01](#) [M55155/109H02](#) [M55155/12XH05](#) [M55155/16XH02](#)