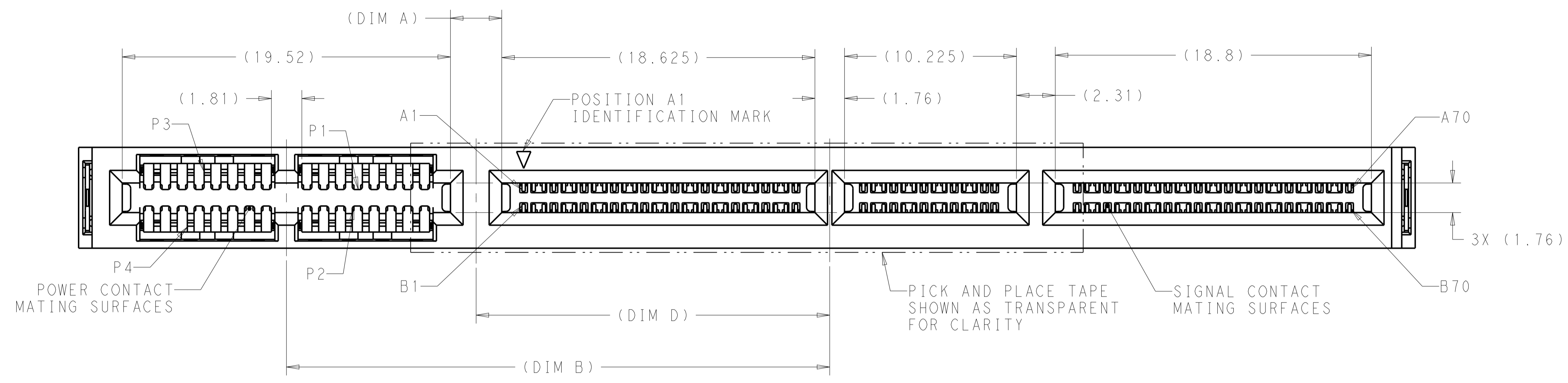
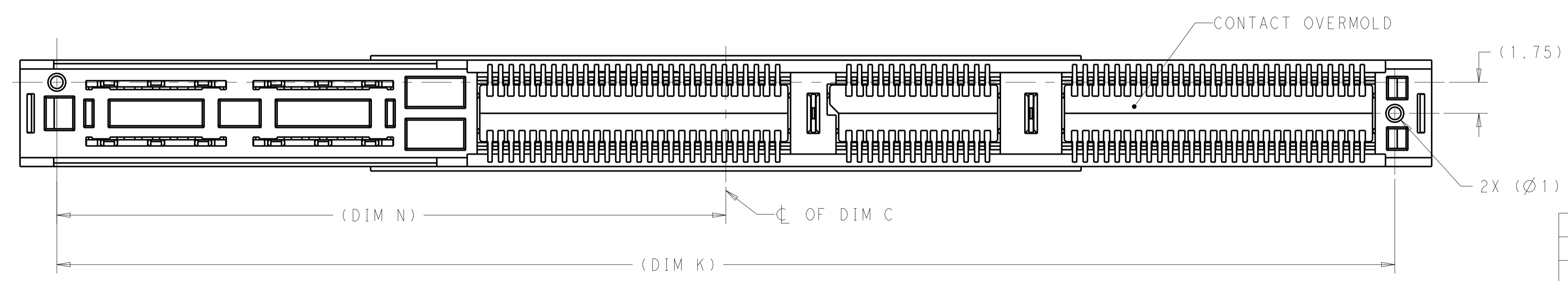
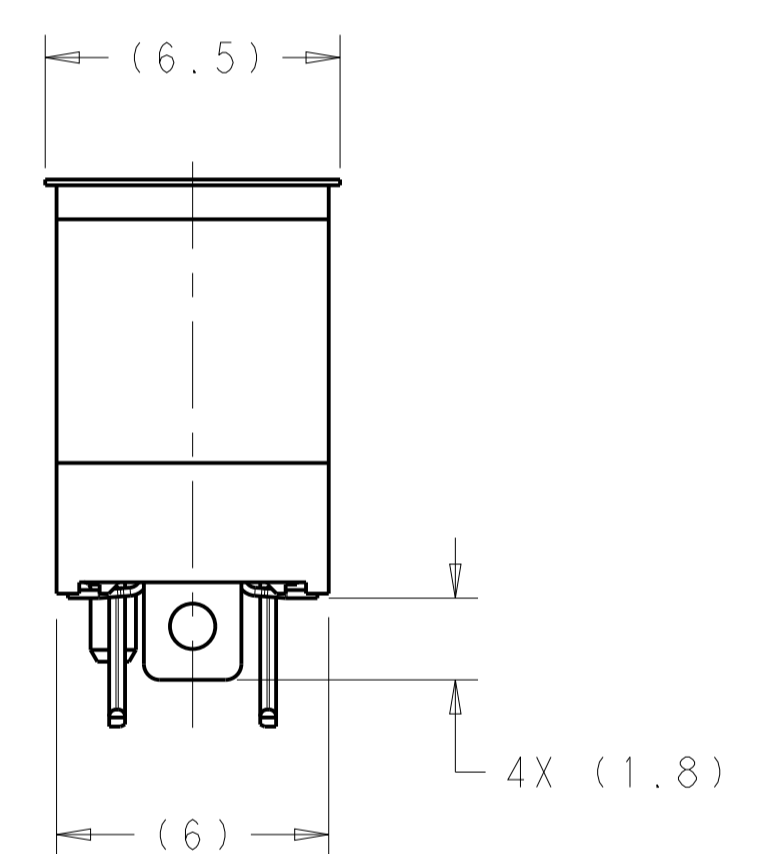
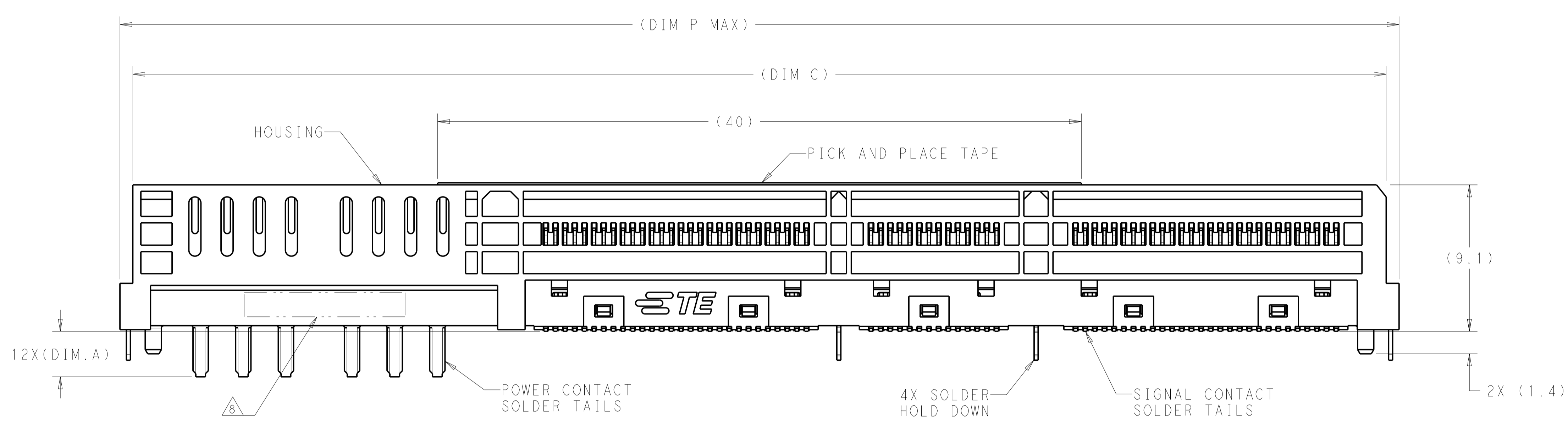


| REVISIONS | | | | | |
|-----------|-----|---------------------------|-----------|-----|------|
| P | LTN | DESCRIPTION | DATE | DWN | APVD |
| A | | RELEASED | 20MAY2018 | CJV | JW |
| B | | REVISED PER ECN-21-101549 | 15MAR2021 | TX | DZ |



- ⚠ HOUSING AND CONTACT OVERMOLDS - LCP, UL94 V-0, BLACK. CONTACTS AND HOLD DOWNS - COPPER ALLOY. PICK AND PLACE TAPE - POLYIMIDE FILM.
- ⚠ CONTACTS - GOLD PLATE ON MATING SURFACES, TIN PLATE ON SOLDER TAILS. HOLD DOWNS - TIN PLATE.
- ⚠ DATUMS AND BASIC DIMENSIONS ESTABLISHED BY CUSTOMER.
- 4. MINIMUM HOST PCB THICKNESS: 1.5.
- ⚠ SEE MSA SPECIFICATION FOR ADDITIONAL PADDLE CARD LAYOUTS COMPATIBLE WITH THIS RECEPTACLE AND FOR OPTIONAL SPLIT CONTACT PAD LAYOUTS FOR THE PADDLE CARD. SPECIFICATION PINOUT MAY ALSO DESIGNATE PAD SEQUENCE DIFFERENT FROM ILLUSTRATION.
- ⚠ POSITIONS DESIGNATED AS "SIGNAL" ARE REQUIRED LOCATIONS FOR HIGH SPEED DIFFERENTIAL PAIR SIGNALING. THESE LOCATIONS MAY ALSO BE USED FOR SUPPORTING SIDEBAND SIGNALS OR OTHER UTILITY PURPOSES. POSITIONS DESIGNATED AS "GROUND" ARE REQUIRED WHEN SUPPORTING HIGH SPEED DIFFERENTIAL SIGNALS. THESE LOCATIONS MAY ALSO BE USED FOR SIDEBAND SIGNALS OR OTHER UTILITY PURPOSES.
- ⚠ COMPONENT AND TRACE KEEP OUT AREA. EACH EDGE 0.15 MIN FROM EDGE OF HOLE.
- ⚠ PART NUMBER AND DATE CODE MARKED IN APPROXIMATE AREA SHOWN.



| 1.65 | 200 | YES | HARD TRAY | 12V | 1-2338718-0 |
|-------|---------------|---------------------|-----------|----------------|-------------|
| 2.83 | 200 | NO | HARD TRAY | 48V | 2338718-6 |
| 2.83 | 200 | NO | HARD TRAY | 12V | 2338718-5 |
| 2.83 | 200 | YES | HARD TRAY | 48V | 2338718-4 |
| 2.83 | 200 | YES | HARD TRAY | 12V | 2338718-3 |
| 2.83 | 200 | YES | SOFT TRAY | 48V | 2338718-2 |
| 2.83 | 200 | YES | SOFT TRAY | 12V | 2338718-1 |
| DIM.A | MATING CYCLES | PICK AND PLACE TAPE | PACKAGING | VOLTAGE RATING | PART NUMBER |

| 21.57 | 5.385 | 74.76 | 80.74 | 38.17 | 4.57 | 77.89 | 76.34 | 55.86 | 43.6 | 58.31 | 45.6 | 25.39 | 21.53 | 78.89 | 33.31 | 4.05 | 48V |
|-------|-------|-------|-------|-------|------|-------|-------|-------|------|-------|------|-------|-------|-------|-------|------|----------------|
| 21.07 | 4.885 | 73.76 | 79.74 | 37.67 | 3.57 | 76.89 | 75.34 | 54.86 | 42.6 | 57.31 | 44.6 | 24.39 | 21.03 | 77.89 | 32.31 | 3.05 | 12V |
| T | S | R | P | N | M | L | K | J | H | G | F | E | D | C | B | A | VOLTAGE RATING |

THIS DRAWING IS A CONTROLLED DOCUMENT.

DWN: C. VALENTINE, 22JUN2018
 CHK: H. ANDREWS, 22JUN2018
 APVD: H. ANDREWS, 22JUN2018

NAME: RECEPTACLE ASSEMBLY, 4C WITH HIGH POWER, SLIVER 2.0

SIZE: A1 CAGE CODE: DRAWING NO: 2338718

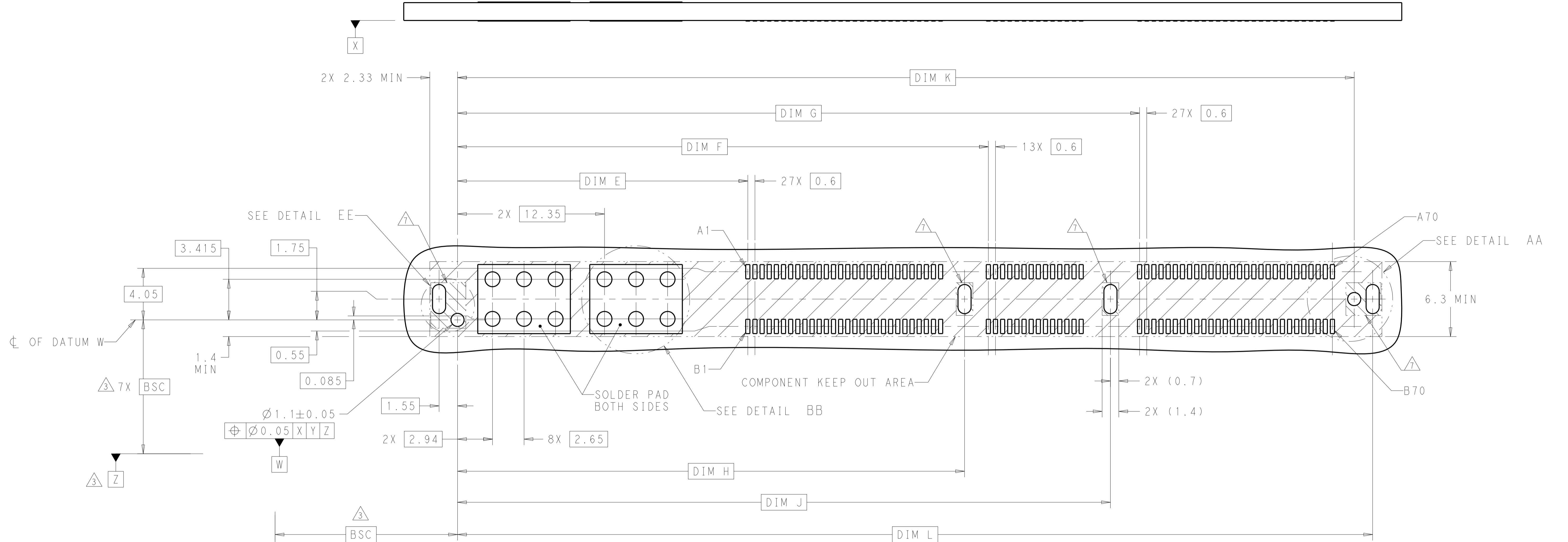
MATERIAL: FINISH:

WEIGHT: -

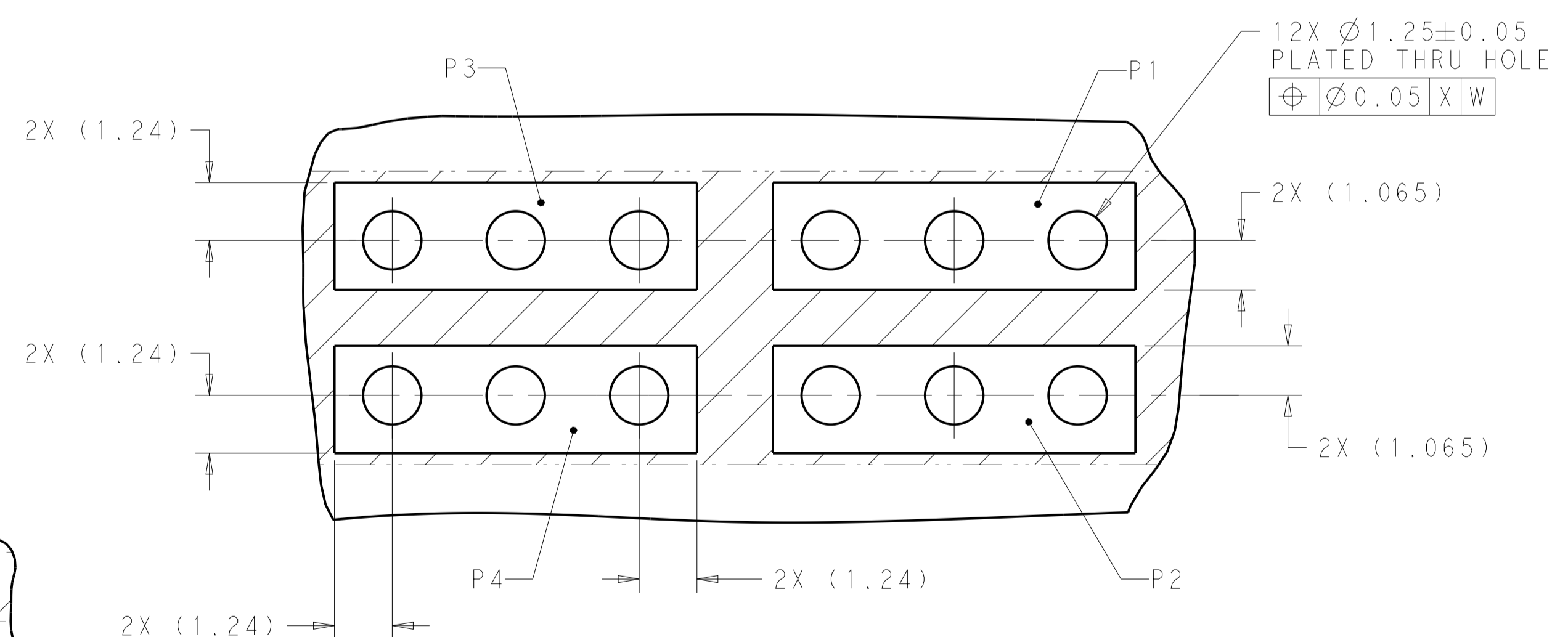
CUSTOMER DRAWING

SCALE: 6:1 SHEET 1 OF 4 REV B

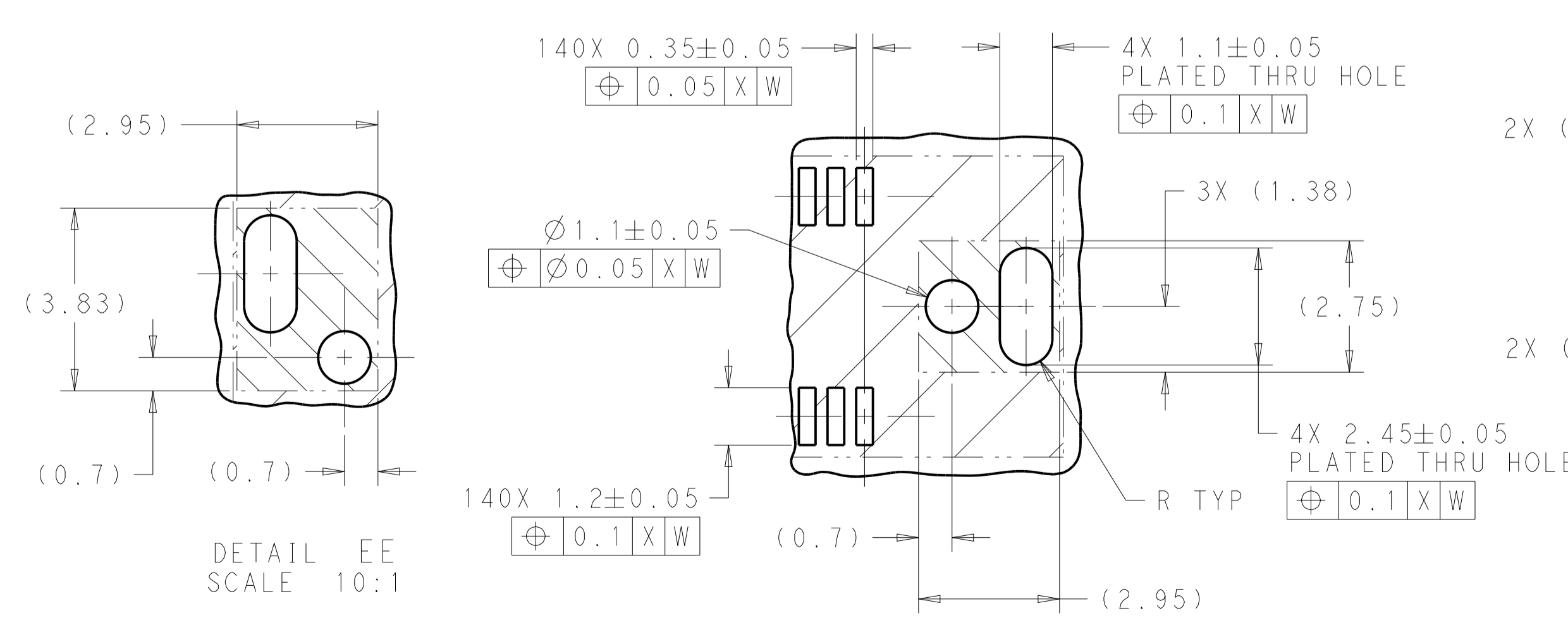
| REVISIONS | | | | |
|-----------|------|-------------|------|-------|
| P. | LTN. | DESCRIPTION | DATE | APVD. |
| - | - | SEE SHEET 1 | - | - |



RECOMMENDED PCB LAYOUT AND KEEP OUT AREA

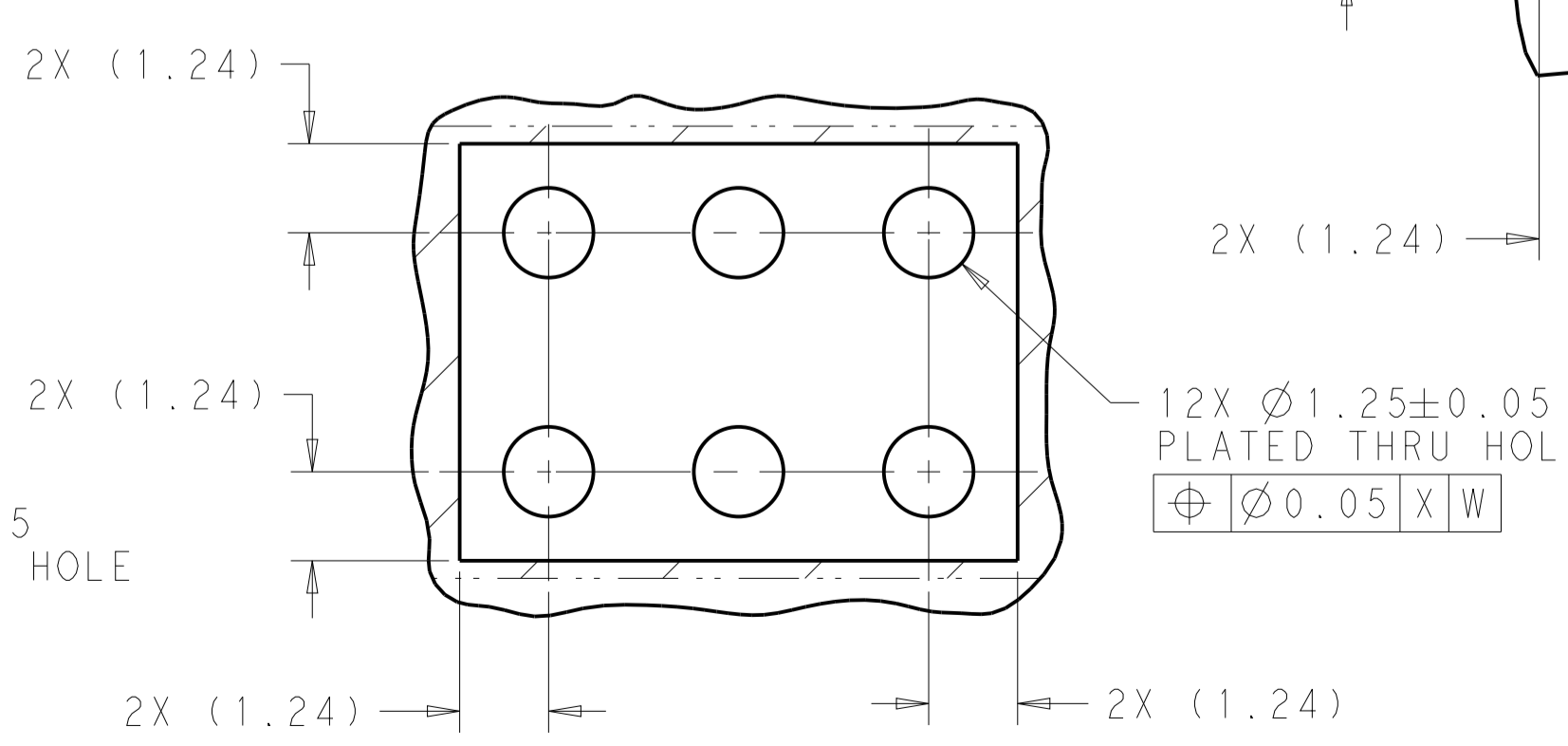


OPTIONAL LAYOUT FOR POWER MODULE SCALE 10:1



DETAIL EE SCALE 10:1

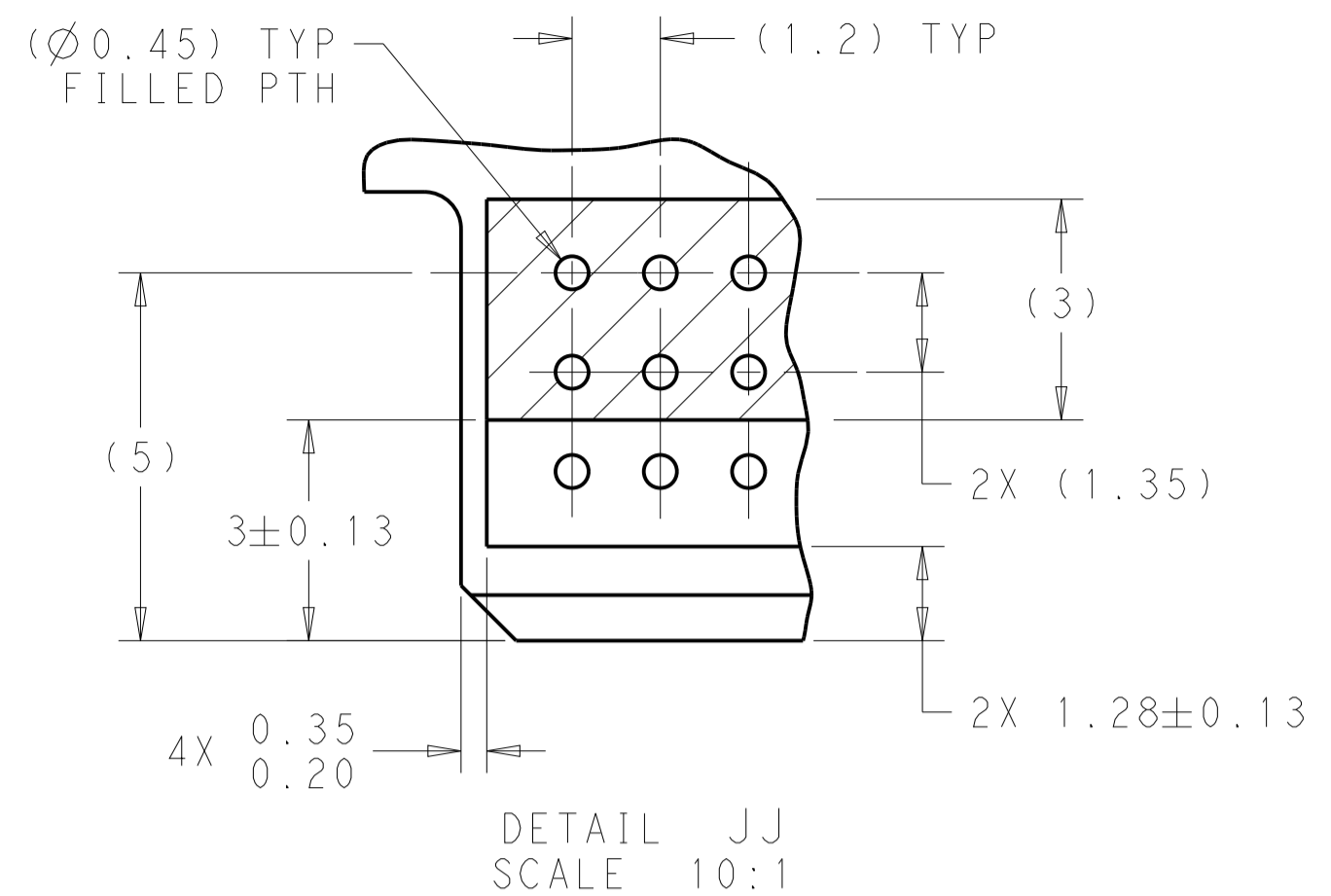
DETAIL AA SCALE 10:1



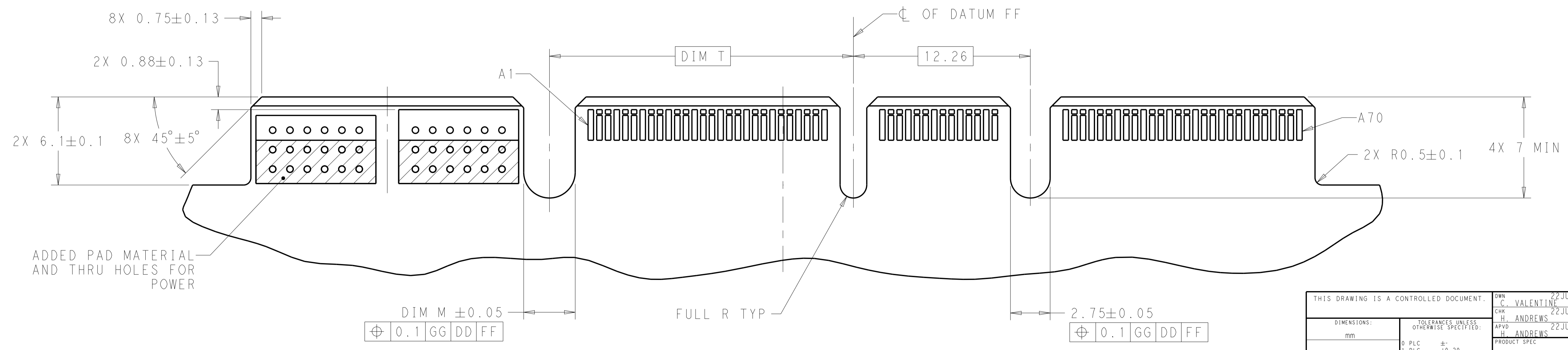
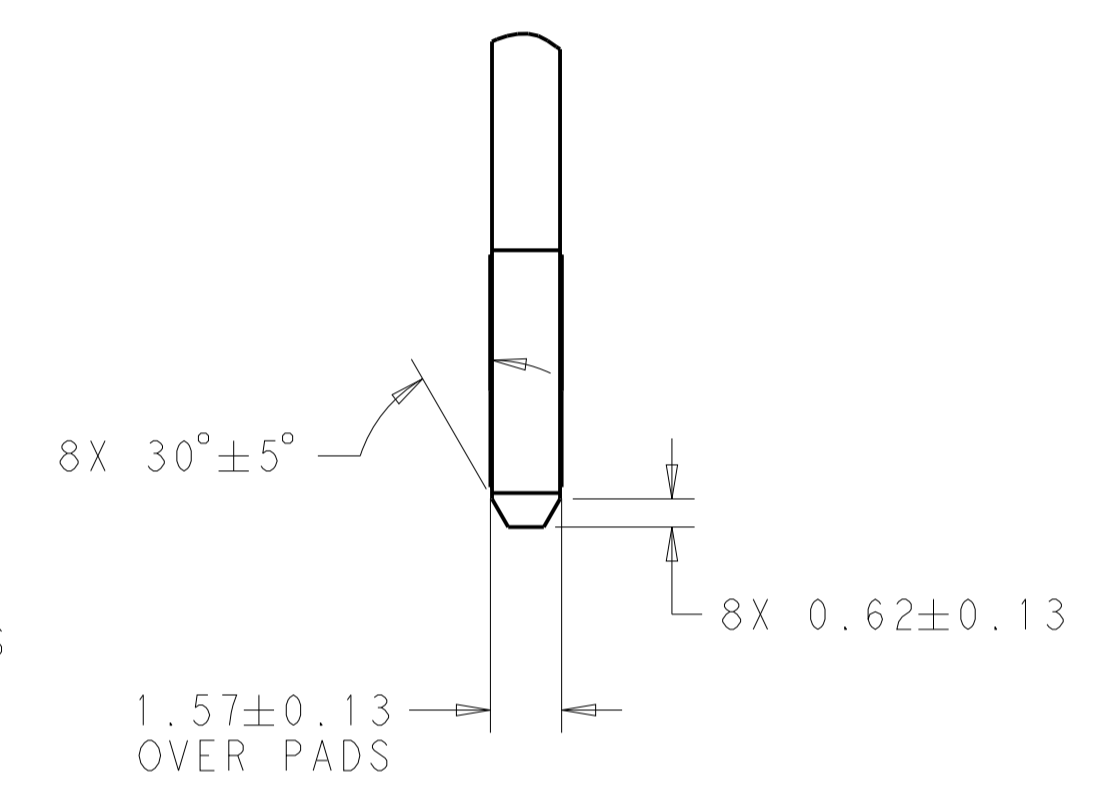
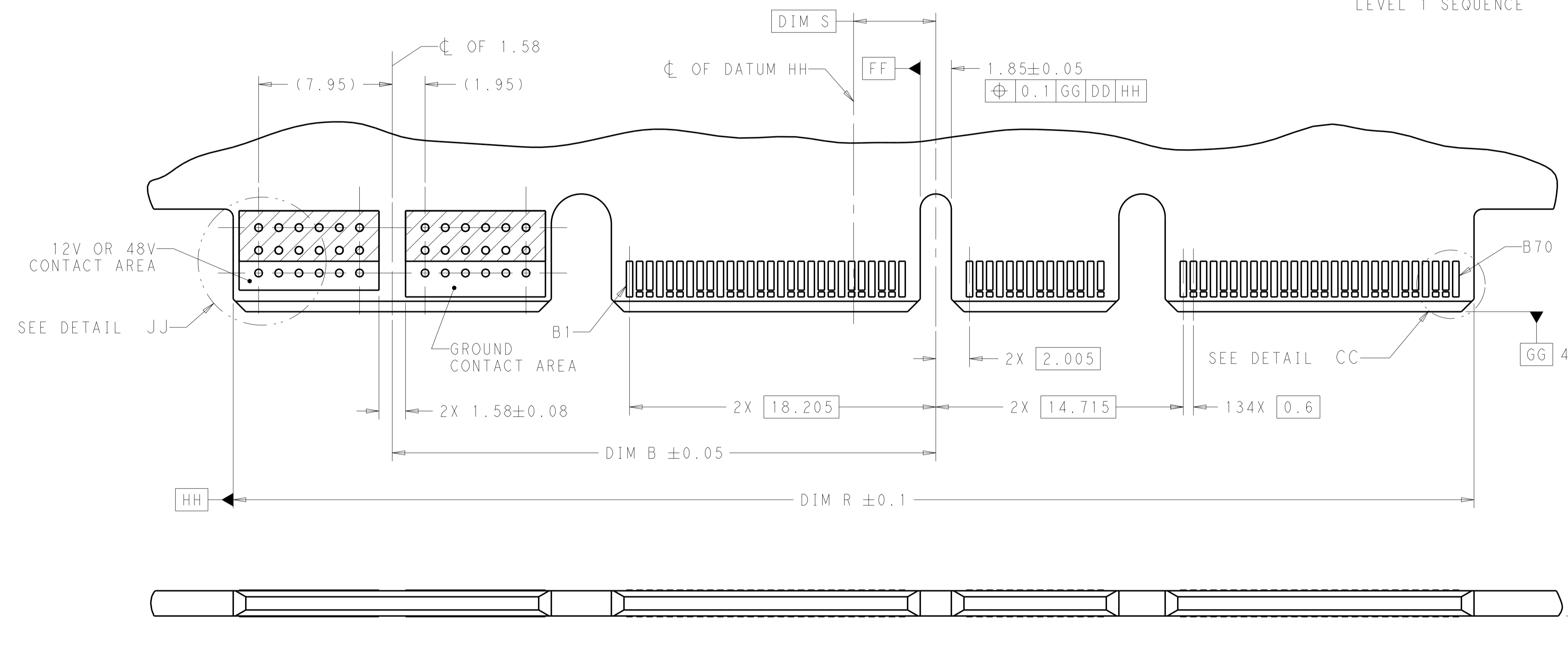
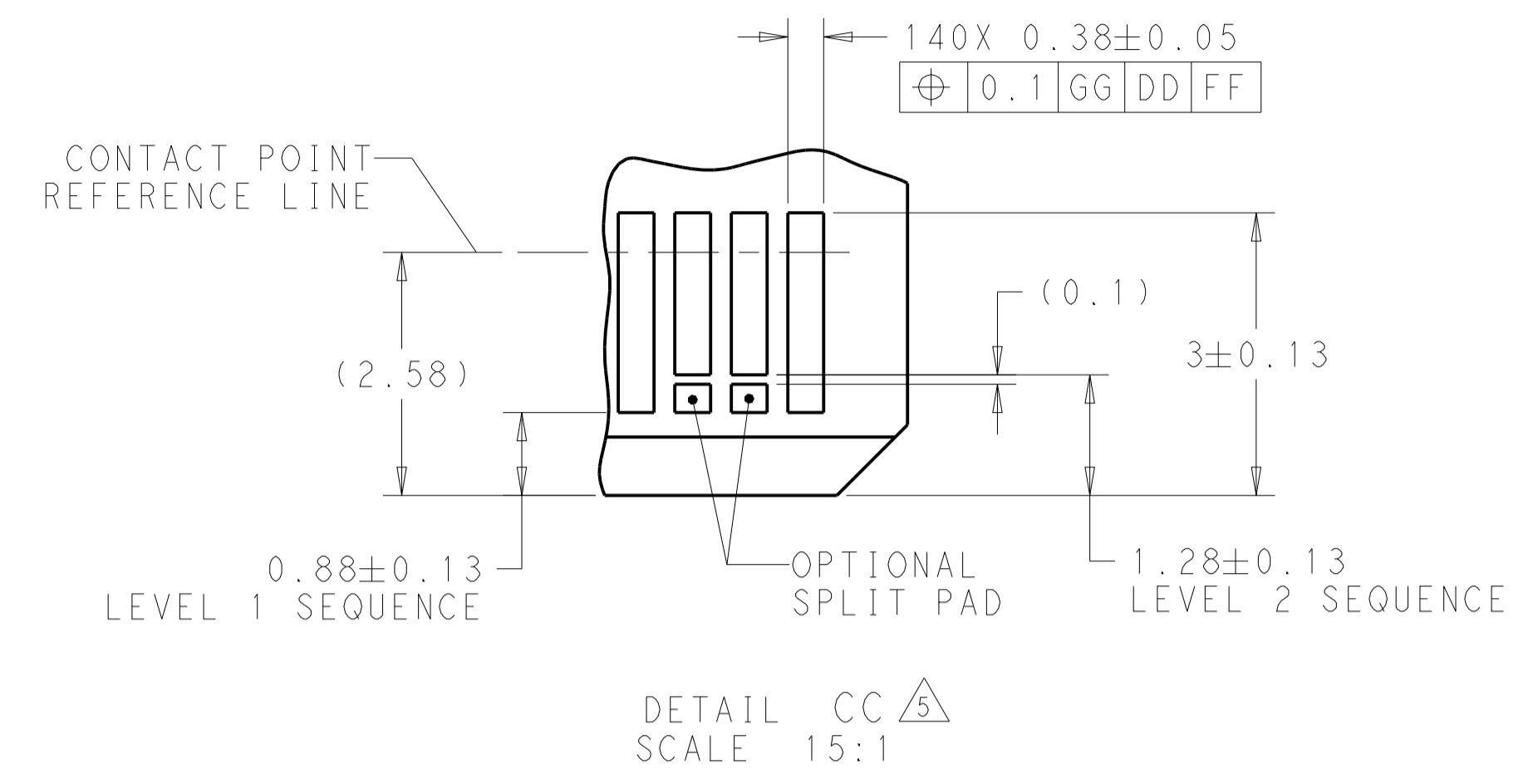
DETAIL BB SCALE 10:1

| | | | |
|--|-------------|-------------------------------|---|
| THIS DRAWING IS A CONTROLLED DOCUMENT. | | DWN: C. VALENTINI 22 JUN 2018 | TE Connectivity |
| DIMENSIONS: mm | | CHK: H. ANDREWS 22 JUN 2018 | |
| TOLERANCES UNLESS OTHERWISE SPECIFIED: | | APVD: H. ANDREWS 22 JUN 2018 | NAME: RECEPTACLE ASSEMBLY, 4C WITH HIGH POWER, SLIVER 2.0 |
| 0 PLC ± | 1 PLC ±0.20 | PRODUCT SPEC | SIZE: CAGE CODE DRAWING NO |
| 2 PLC ±0.20 | 3 PLC ± | APPLICATION SPEC | A100779C=2338718 |
| 4 PLC ± | ANGLES ± | WEIGHT | RESTRICTED TO |
| MATERIAL | FINISH | CUSTOMER DRAWING | SCALE 6:1 SHEET 2 OF 4 REV B |

| REVISIONS | | | | |
|-----------|------|-------------|------|------------|
| P. | LTN. | DESCRIPTION | DATE | DMN. APVD. |
| - | - | SEE SHEET 1 | - | - |



RECOMMENDED PCB OUTLINE DIMENSIONS.
TOLERANCE VALUES ARE CRITICAL. PLEASE BE SURE TO DESIGNATE TOLERANCES TO PCB SUPPLIER TO ENSURE OPTIMIZED FUNCTIONALITY.

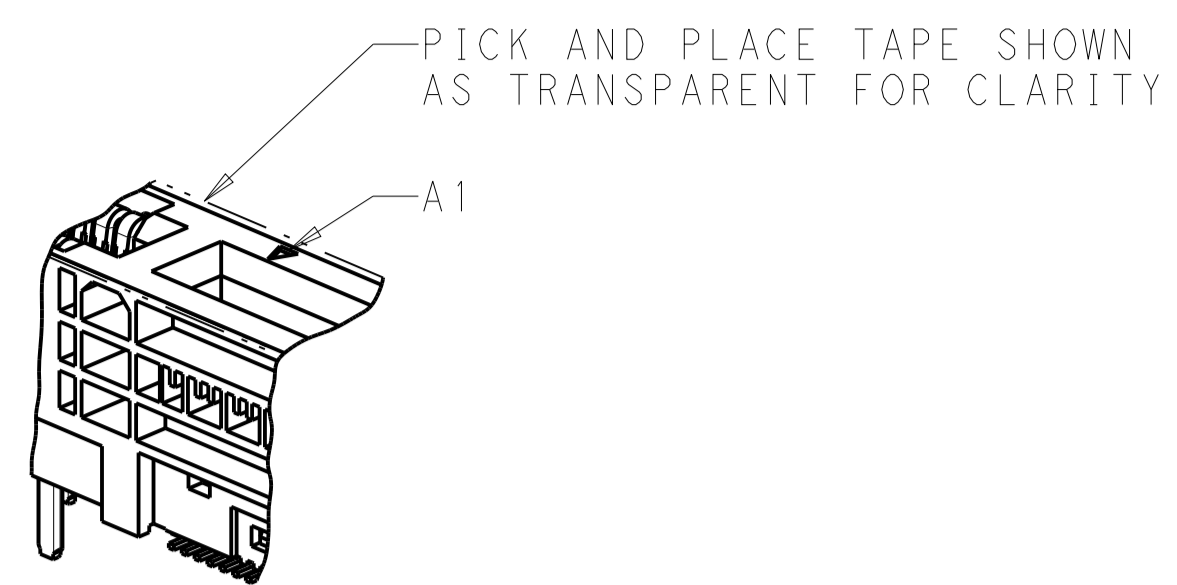


| | | | |
|--|--------------|-----------------------------|--|
| THIS DRAWING IS A CONTROLLED DOCUMENT. | | DMN. C. VALENTINE 22JUN2018 | TE Connectivity |
| DIMENSIONS: mm | | CHK. H. ANDREWS 22JUN2018 | |
| TOLERANCES UNLESS OTHERWISE SPECIFIED: | | APVD. H. ANDREWS 22JUN2018 | NAME RECEPTACLE ASSEMBLY, 4C WITH HIGH POWER, SLIVER 2.0 |
| 0 PLC ±0.20 | 1 PLC ±0.20 | PRODUCT SPEC | SIZE CAGE CODE DRAWING NO. RESTRICTED TO |
| 2 PLC ±0.20 | 3 PLC ±0.20 | APPLICATION SPEC | A100779C=2338718 |
| 4 PLC ±0.20 | ANGLES ±0.20 | WEIGHT | SCALE 6:1 SHEET 3 OF 4 REV B |
| MATERIAL | FINISH | CUSTOMER DRAWING | |

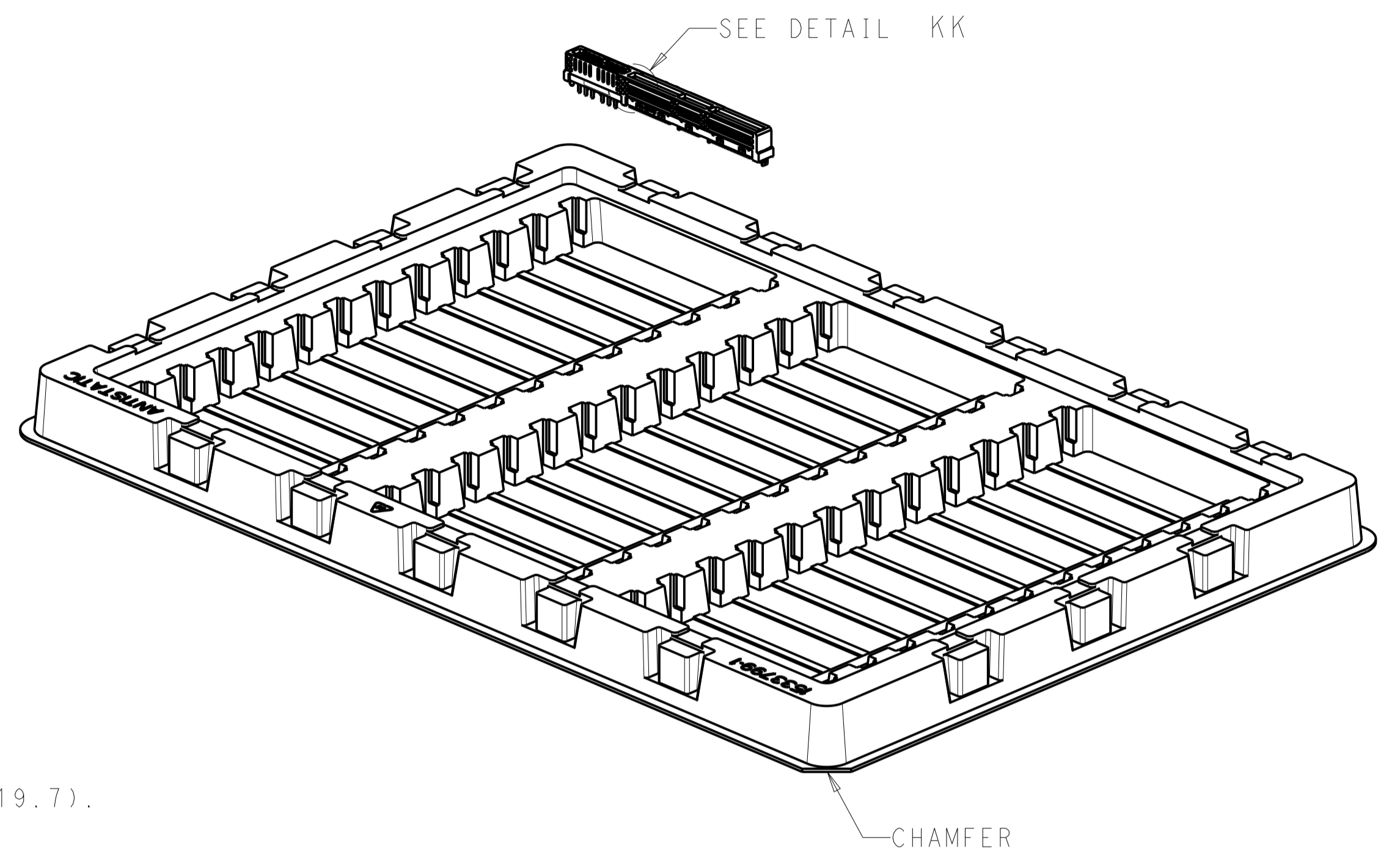
| REVISIONS | | | | |
|-----------|-----|-------------|------|------|
| P. | LTN | DESCRIPTION | DATE | APVD |
| - | - | SEE SHEET 1 | - | - |

| CONTACT NUMBER | SIDE A | SIDE B |
|----------------|--------|--------|
| 1 | GROUND | GROUND |
| 2 | SIGNAL | SIGNAL |
| 3 | SIGNAL | SIGNAL |
| 4 | GROUND | GROUND |
| 5 | SIGNAL | SIGNAL |
| 6 | SIGNAL | SIGNAL |
| 7 | GROUND | GROUND |
| 8 | SIGNAL | SIGNAL |
| 9 | SIGNAL | SIGNAL |
| 10 | GROUND | GROUND |
| 11 | SIGNAL | SIGNAL |
| 12 | SIGNAL | SIGNAL |
| 13 | GROUND | GROUND |
| 14 | SIGNAL | SIGNAL |
| 15 | SIGNAL | SIGNAL |
| 16 | GROUND | GROUND |
| 17 | SIGNAL | SIGNAL |
| 18 | SIGNAL | SIGNAL |
| 19 | GROUND | GROUND |
| 20 | SIGNAL | SIGNAL |
| 21 | SIGNAL | SIGNAL |
| 22 | GROUND | GROUND |
| 23 | SIGNAL | SIGNAL |
| 24 | SIGNAL | SIGNAL |
| 25 | GROUND | GROUND |
| 26 | SIGNAL | SIGNAL |
| 27 | SIGNAL | SIGNAL |
| 28 | GROUND | GROUND |
| 29 | GROUND | GROUND |
| 30 | SIGNAL | SIGNAL |
| 31 | SIGNAL | SIGNAL |
| 32 | GROUND | GROUND |
| 33 | SIGNAL | SIGNAL |
| 34 | SIGNAL | SIGNAL |
| 35 | GROUND | GROUND |

| CONTACT NUMBER | SIDE A | SIDE B |
|----------------|--------|--------|
| 36 | SIGNAL | SIGNAL |
| 37 | SIGNAL | SIGNAL |
| 38 | GROUND | GROUND |
| 39 | SIGNAL | SIGNAL |
| 40 | SIGNAL | SIGNAL |
| 41 | GROUND | GROUND |
| 42 | GROUND | GROUND |
| 43 | GROUND | GROUND |
| 44 | SIGNAL | SIGNAL |
| 45 | SIGNAL | SIGNAL |
| 46 | GROUND | GROUND |
| 47 | SIGNAL | SIGNAL |
| 48 | SIGNAL | SIGNAL |
| 49 | GROUND | GROUND |
| 50 | SIGNAL | SIGNAL |
| 51 | SIGNAL | SIGNAL |
| 52 | GROUND | GROUND |
| 53 | SIGNAL | SIGNAL |
| 54 | SIGNAL | SIGNAL |
| 55 | GROUND | GROUND |
| 56 | SIGNAL | SIGNAL |
| 57 | SIGNAL | SIGNAL |
| 58 | GROUND | GROUND |
| 59 | SIGNAL | SIGNAL |
| 60 | SIGNAL | SIGNAL |
| 61 | GROUND | GROUND |
| 62 | SIGNAL | SIGNAL |
| 63 | SIGNAL | SIGNAL |
| 64 | GROUND | GROUND |
| 65 | SIGNAL | SIGNAL |
| 66 | SIGNAL | SIGNAL |
| 67 | GROUND | GROUND |
| 68 | SIGNAL | SIGNAL |
| 69 | SIGNAL | SIGNAL |
| 70 | GROUND | GROUND |



DETAIL KK
SCALE 4:1

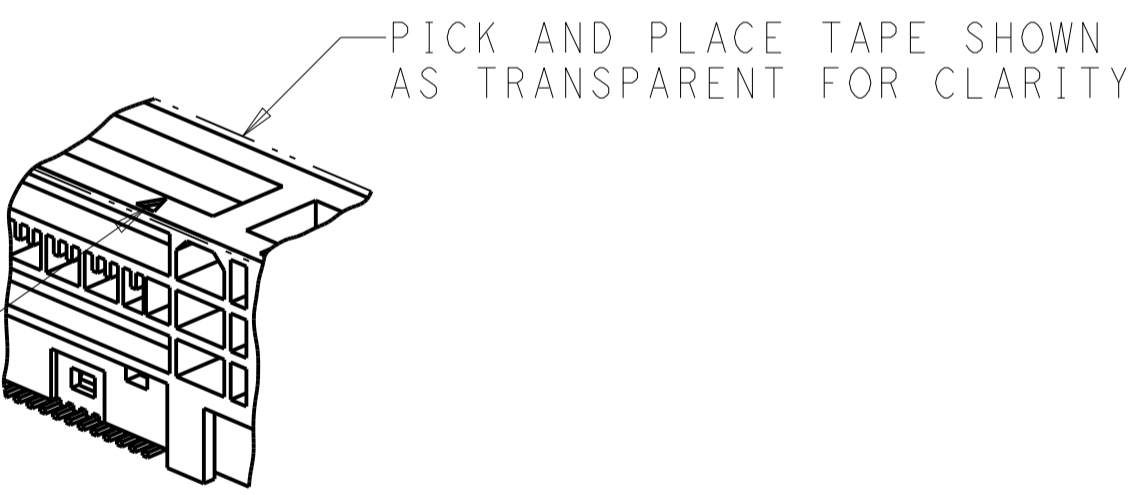
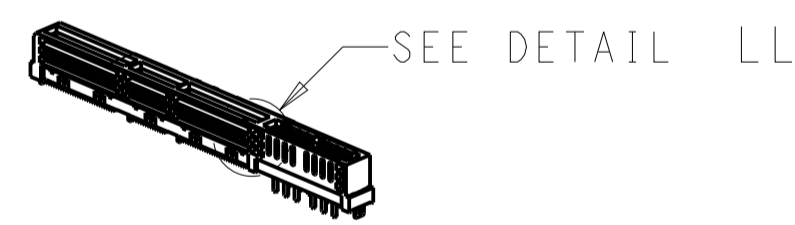


SOFT TRAY

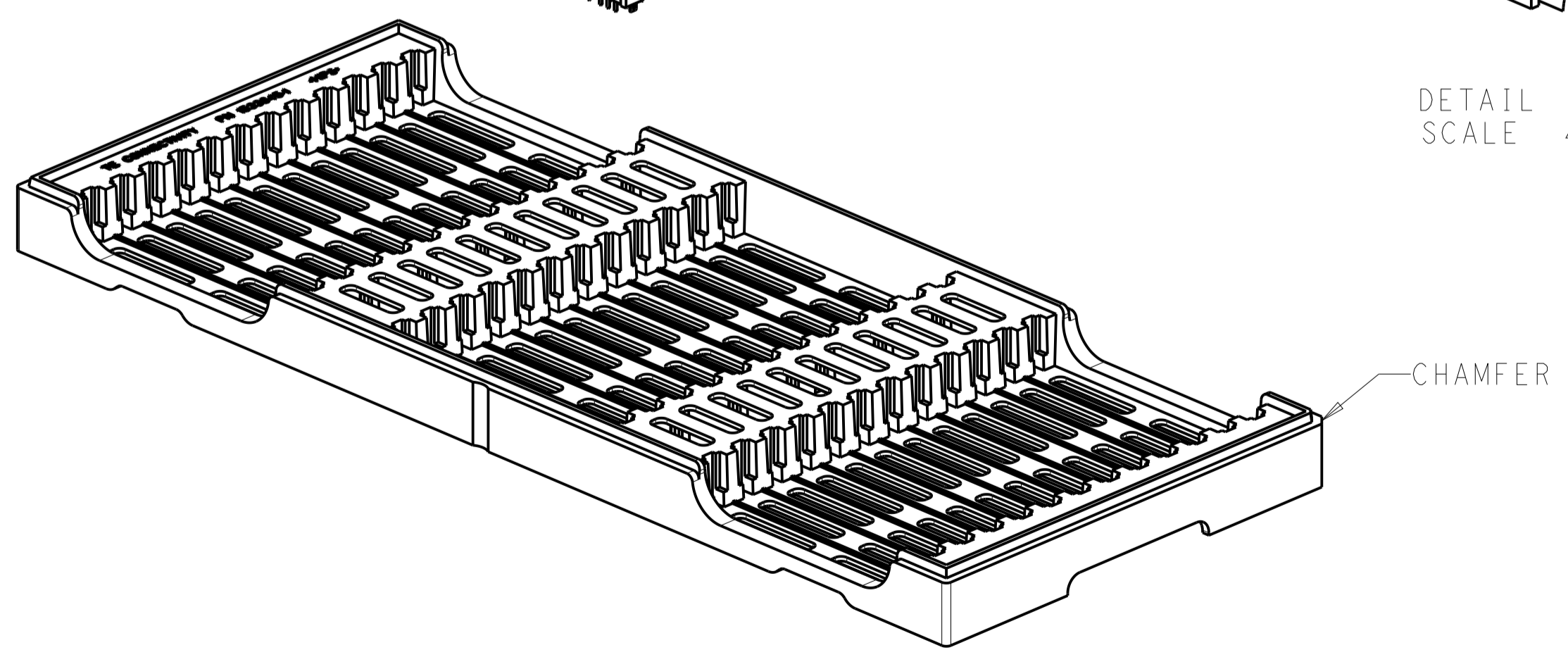
- DIMENSIONS:
TRAY L= (335), W= (230), H= (19.7).
- QUANTITY:
36 PIECES PER TRAY.
720 PIECES PER BOX.

FIGURE 1
SOFT TRAY PACKAGING
2338718-1 AND 2338718-2
SCALE 3:4

CONNECTOR CONTACT IDENTIFICATION  





DETAIL LL
SCALE 4:1



HARD TRAY

- MATERIAL:
TRAY- HIPS, COLOR: BLACK.
BOX- CORRUGATED FIBERBOARD.
TRANSPARENT BAG- PE.
- DIMENSIONS:
TRAY- L= 330, W= 136, H= 17.5.
BOX- L= 13.75 IN, W= 11.75 IN, H= 5.75 IN.
- QUANTITY:
36 PIECES PER TRAY.
432 PIECES PER BOX.

FIGURE 2
HARD TRAY PACKAGING
2338718-3 TO 1-2338718-0
SCALE 3:4

| | | | |
|---|-------------|----------------------------------|---|
| THIS DRAWING IS A CONTROLLED DOCUMENT. | | OWN C. VALENTINE 22JUN2018 |  TE Connectivity |
| DIMENSIONS: | | CHK H. ANDREWS 22JUN2018 | |
| mm | 0 PLC ± | APVD H. ANDREWS 22JUN2018 | NAME RECEPTACLE ASSEMBLY, 4C WITH HIGH POWER, SLIVER 2.0 |
|  | 1 PLC ±0.20 | PRODUCT SPEC | SIZE |
| | 2 PLC ±0.20 | APPLICATION SPEC | CAGE CODE |
| MATERIAL | 3 PLC ± | WEIGHT | DRAWING NO |
| FINISH | 4 PLC ± | CUSTOMER DRAWING | A100779C=2338718 |
| | | RESTRICTED TO | |
| | | SCALE | 6:1 |
| | | SHEET | 4 OF 4 |
| | | REV | B |

X-ON Electronics

Largest Supplier of Electrical and Electronic Components

Click to view similar products for [Standard Card Edge Connectors](#) category:

Click to view products by [TE Connectivity](#) manufacturer:

Other Similar products are found below :

[CR7E-30DB-3.96E\(72\)](#) [6364499-1](#) [6565204-6](#) [PKC-156](#) [1437274-4](#) [147889-1](#) [1489165-4](#) [EBT15622B2X](#) [1-582587-1](#) [284-0102-12100](#)
[286-0052-12101A](#) [306022901000000](#) [307-012-502-202](#) [307-056-520-300](#) [2129318-1](#) [245-062-520-350](#) [287-0032-12101](#) [306-028-525-102](#)
[307-072-526-202](#) [345-060-559-303](#) [392-008-559-201](#) [534671-1](#) [341-240-317](#) [345-044-500-300](#) [346-240-318](#) [395-100-524-300](#) [09-07-2032](#)
[10035388-802LF](#) [10115859-011LF](#) [10122859-009LF](#) [10127905-B04B24BLF](#) [530555-1](#) [5-678046-1](#) [73726-0005](#) [66308-1](#) [1-1437275-6](#)
[PEC-07-02-T-S-A](#) [346-014-520-801](#) [307-048-502-202](#) [CE100F22-9-C](#) [CE100F26-7-C](#) [CE100F28-3-D](#) [CE156F18-9-C](#) [CE156F22-5-D](#)
[CE156F22-9-C](#) [CT100F22-2-D](#) [CT100F22-3-D](#) [CT100F24-2-D](#) [CT100F24-3-D](#) [CT100F24-6-C](#)