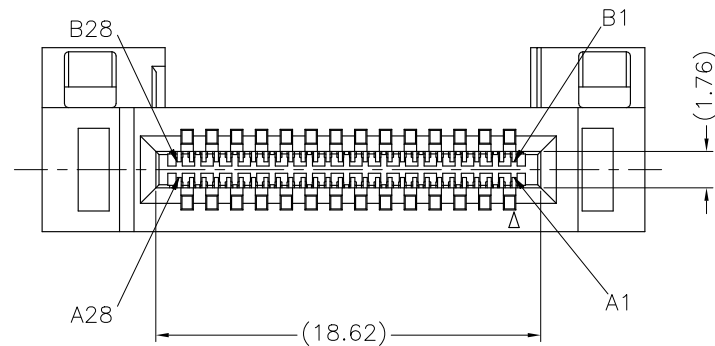
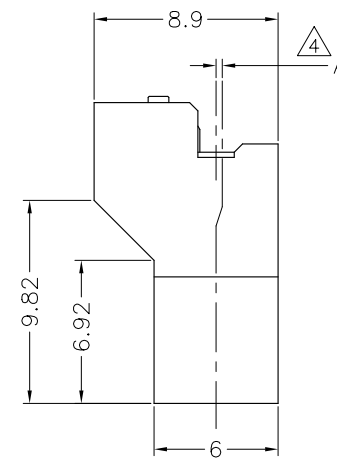
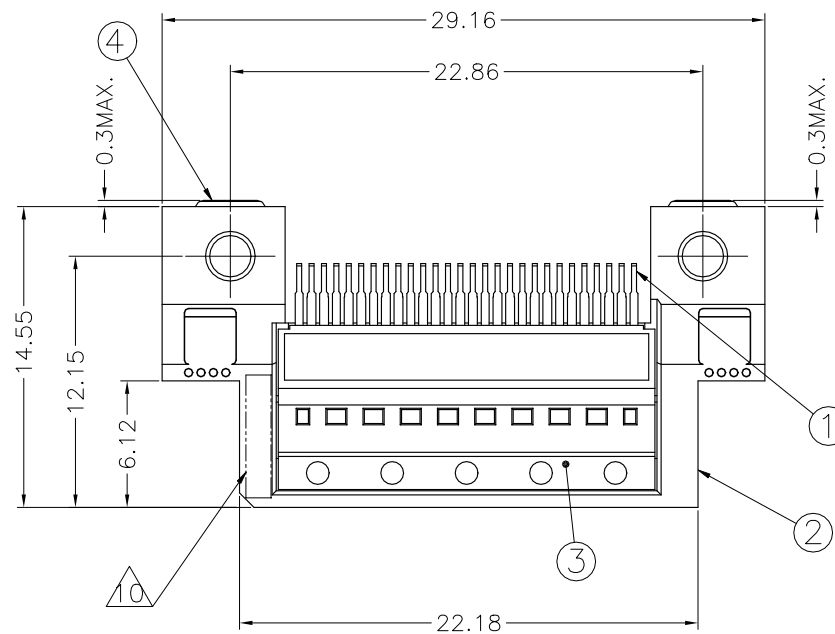
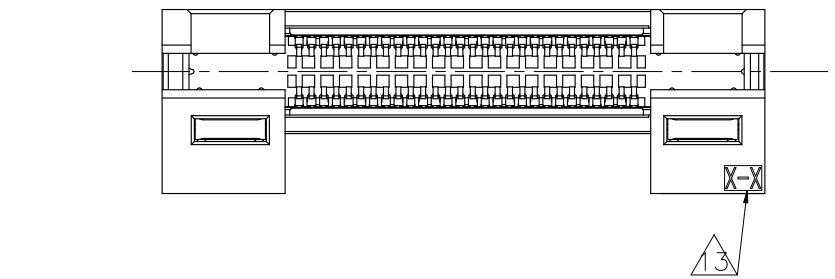


REVISIONS					
P	LTR	DESCRIPTION	DATE	DWN	APVD
D		REVISED ECR-20-012712	11NOV2020	M.T	H.T

NOTE

- ① HOUSING AND COVER: LCP, UL94-V0, BLACK.
CONTACTS: COPPER ALLOY.
- ② GOLD PLATED ON CONTACT AREA.
TIN PLATE ON SOLDER TAIL AREA.
- ③ APPLICABLE HOST BOARD THICKNESS
- ④ OFFSET AMOUNT BETWEEN AIC BOARD AND
HOST BOARD CENTER LINE.
- ⑤ SEE MSA SPECIFICATION FOR ADDITIONAL PADDLE
CARD LAYOUTS COMPATIBLE WITH THIS RECEPTACLE
AND FOR OPTIONAL SPLIT CONTACT PAD LAYOUTS
FOR THE PADDLE CARD. SPECIFICATION PINOUT
MAY ALSO DESIGNATE PAD SEQUENCE DIFFERENT
FROM ILLUSTRATION.
- ⑥ POSITIONS DESIGNATED AS "SIGNAL" ARE
RECOMMENDED LOCATIONS FOR HIGH SPEED
DIFFERENTIAL PAIR SIGNALING. THESE LOCATIONS
MAY ALSO BE USED FOR SUPPORTING SIDEBAND
SIGNALS OR OTHER UTILITY PURPOSES. POSITIONS
DESIGNATED AS "GROUND" ARE REQUIRED WHEN
SUPPORTING HIGH SPEED DIFFERENTIAL SIGNALS.
THESE LOCATIONS MAY ALSO BE USED FOR SIDEBAND
SIGNALS OR OTHER UTILITY PUPOSES.
- ⑦ CONTROLLED ACROSS PADS.
- ⑧ THIS LAYOUT IS ADOPTED IN SFF-TA-1002
- ⑨ SCREW IS ENCLOSED BY SEPARATE PACKING.
SCREW SIZE: M2
SCREW LENGTH(REF): 6
HEAD SIZE(REF): $\phi 3.5$, 1.3HEIGHT
- ⑩ DATE CODE MARKING.
- ⑪ CONNECTOR MUST BE FIXED ON PCB BY SCREW
AFTER SOLDERING.
- ⑫ ALL CHAMFERED EDGES AND EDGE OF PADS
SHALL BE FREE OF BURRS.
- ⑬ HOUSING ID MARK



PLATING	PACKAGING	SCREW INCLUSION	④ DIM A	③ DIM B (HOST BOARD THICKNESS)	PARTS No.
0.76 μ m Au	SOFT TRAY	YES	0	1.57 ± 0.15	2340331-1
		YES	0	2.36 ± 0.23	2-2340331-1
		NO	0	2.36 ± 0.23	2-2340331-3

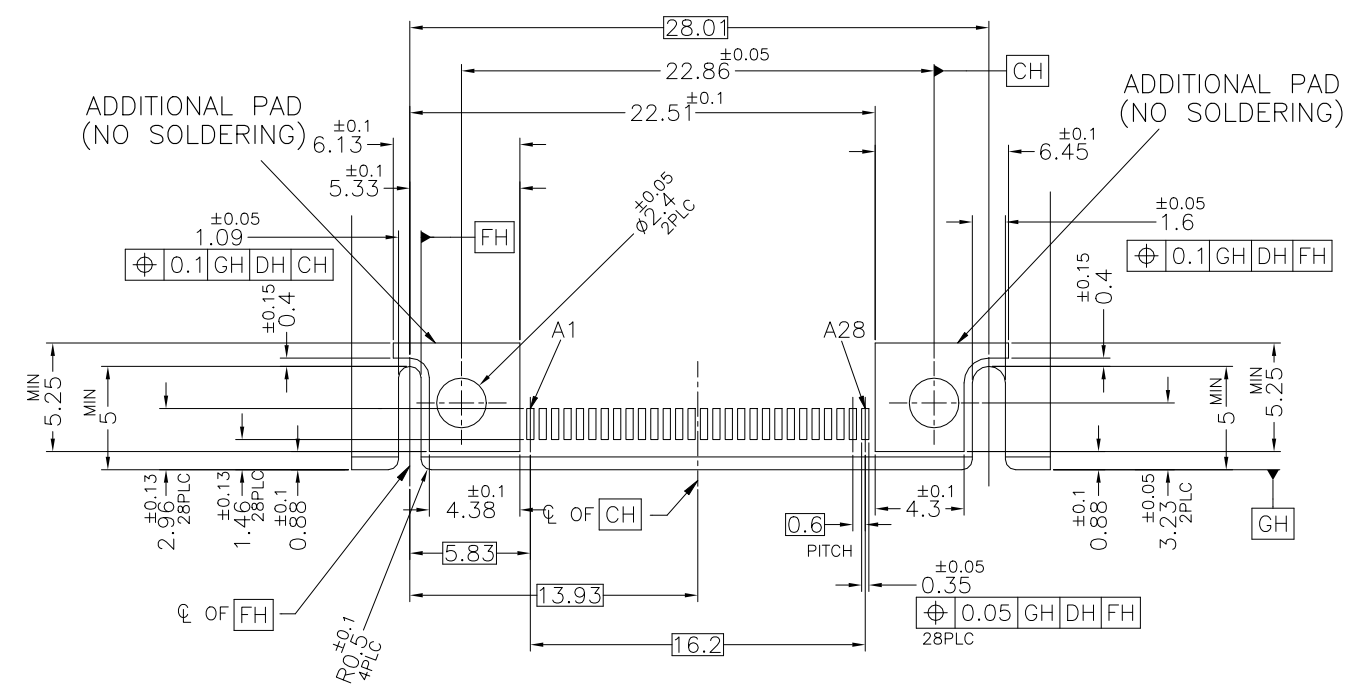
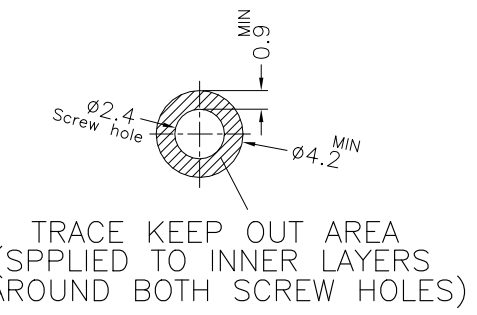
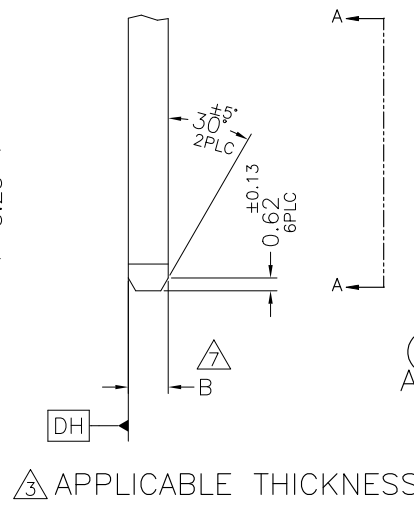
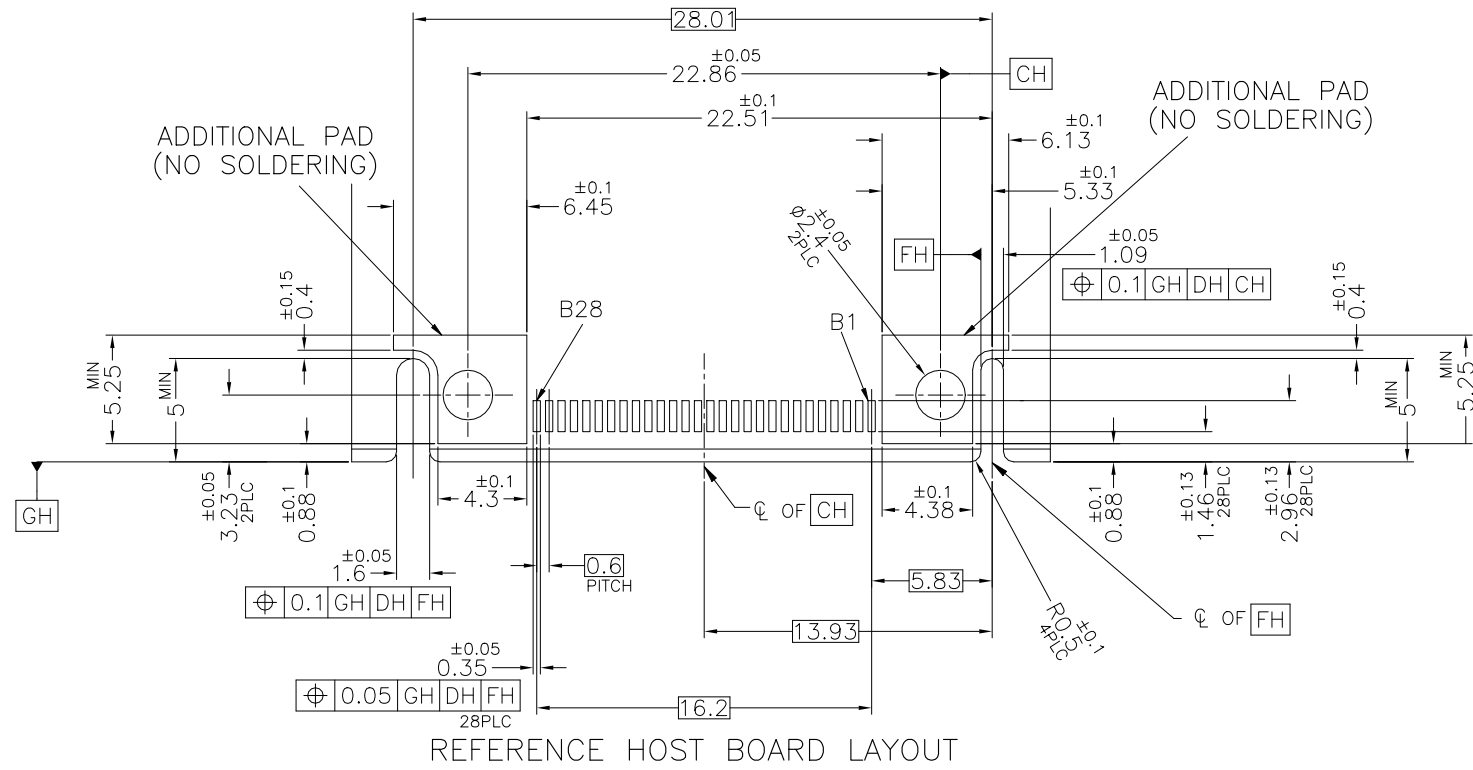
THIS DRAWING IS A CONTROLLED DOCUMENT.

DWN J.TSUJI 15FEB2019	TE Connectivity Ltd.
CHK K.KOBAYASHI 18FEB2019	
APVD K.KOBAYASHI 18FEB2019	
PRODUCT SPEC 108-140197	
APPLICATION SPEC 114-78033	NAME 56 POSITION SLIVER 2.0 STRADDLE MOUNT
WEIGHT 0	SIZE A2
CUSTOMER DRAWING	CAGE CODE 00779
	DRAWING NO C=2340331
	RESTRICTED TO
	SCALE 4:1
	SHEET 1 of 4
	REV D

QTY	NAME	ITEM No.
2	M2 SCREW	⑨
2	M2 NUT PLATE	④
2	COVER HOUSING 28P	③
1	HOUSING	②
56	CONTACT	①

AS SHOWN : -1, 2--1, 2--3

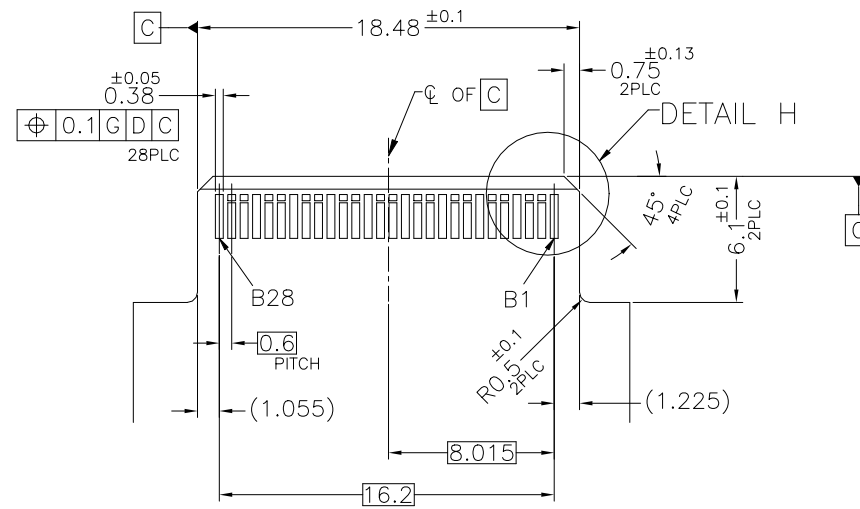
REVISIONS					
P	LTR	DESCRIPTION	DATE	DWN	APVD
-	-	SEE SHEET 1	-	-	-



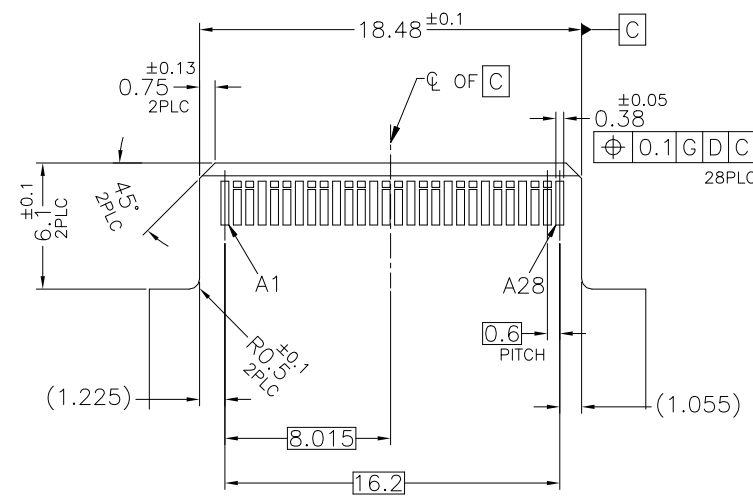
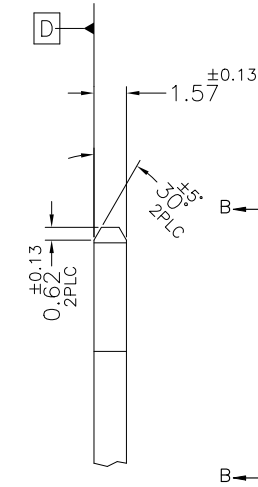
THIS DRAWING IS A CONTROLLED DOCUMENT.		DWN	TE Connectivity Ltd.			
DIMENSIONS: mm		CHK				
		APVD	NAME			
TOLERANCES UNLESS OTHERWISE SPECIFIED: ±0.3 0-PLC ± 1-PLC ± 2-PLC ± 3-PLC ± 4-PLC ± ANGLES ± FINISH ±		PRODUCT SPEC	56 POSITION SLIVER 2.0 STRADDLE MOUNT			
MATERIAL		APPLICATION SPEC	SIZE	CAGE CODE	DRAWING NO	RESTRICTED TO
		WEIGHT	A2	00779	C=2340331	
		CUSTOMER DRAWING	SCALE	SHEET	REV	
			4:1	2 of 4	D	

REVISIONS

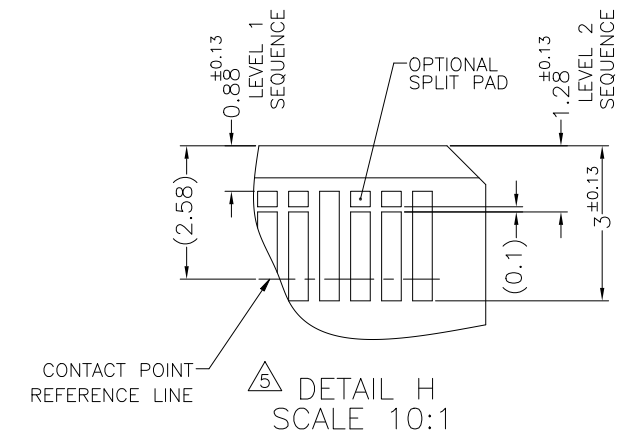
P	LTR	DESCRIPTION	DATE	DWN	APVD
-	-	SEE SHEET 1	-	-	-



REFERENCE AIC BOARD LAYOUT



VIEW B-B



DETAIL H SCALE 10:1

THIS DRAWING IS A CONTROLLED DOCUMENT.		DWN	TE Connectivity Ltd.		
DIMENSIONS: mm		CHK	NAME		
TOLERANCES UNLESS OTHERWISE SPECIFIED: ±0.3		APVD	56 POSITION SLIVER 2.0 STRADDLE MOUNT		
<ul style="list-style-type: none"> 0-PLC ± 1-PLC ± 2-PLC ± 3-PLC ± 4-PLC ± 		PRODUCT SPEC	SIZE	CAGE CODE	DRAWING NO
MATERIAL		APPLICATION SPEC	A2	00779	C=2340331
FINISH		WEIGHT	RESTRICTED TO		
		CUSTOMER DRAWING	SCALE	SHEET	REV
			4:1	3 of 4	D

4

3

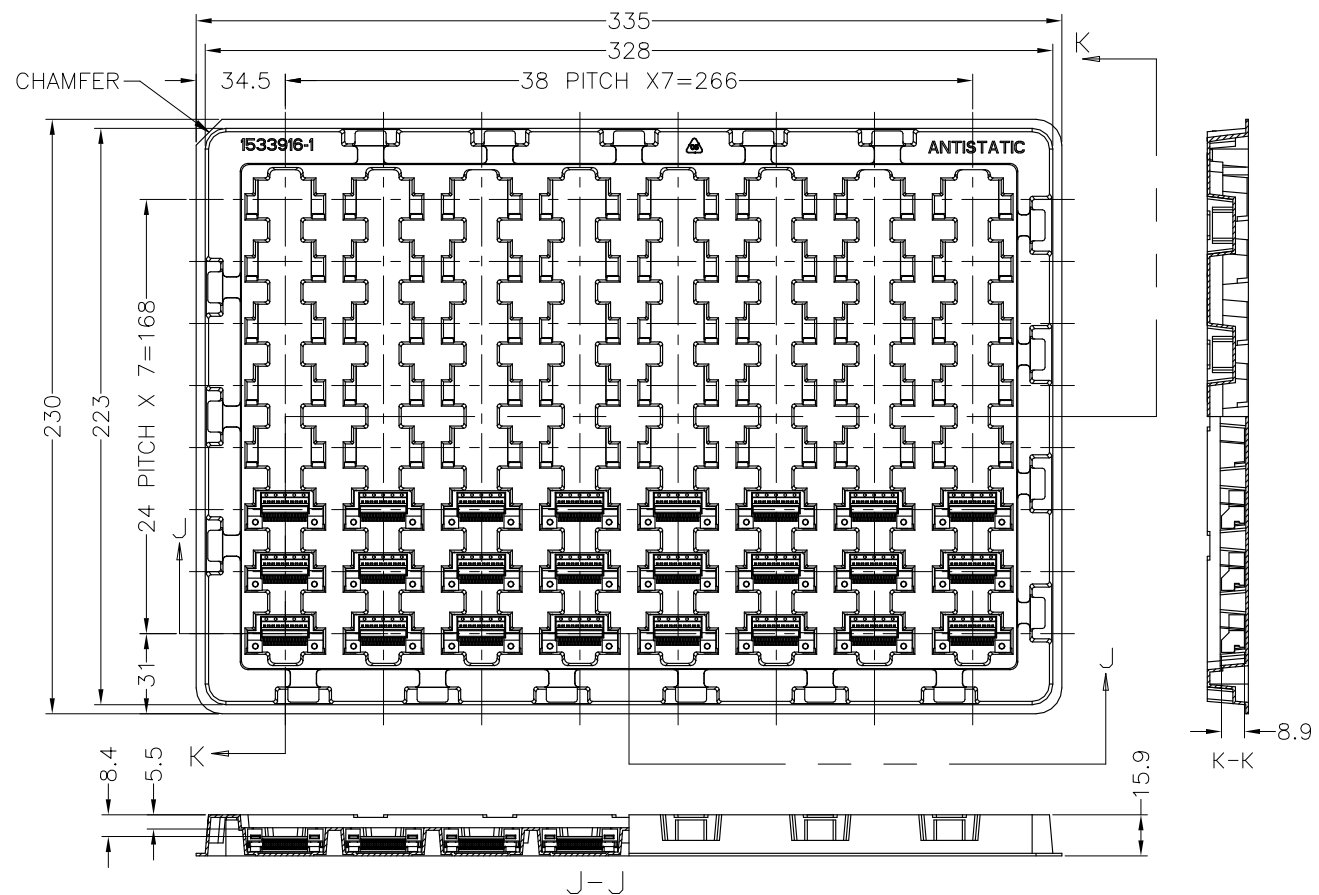
2

1

REVISIONS					
P	LTR	DESCRIPTION	DATE	DWN	APVD
-	-	SEE SHEET 1	-	-	-

CONNECTOR CONTACT IDENTIFICATION $\triangle 5$ $\triangle 6$

CONTACT NUMBER	SIDE A	SIDE B
1	GROUND	GROUND
2	SIGNAL	SIGNAL
3	SIGNAL	SIGNAL
4	GROUND	GROUND
5	SIGNAL	SIGNAL
6	SIGNAL	SIGNAL
7	GROUND	GROUND
8	SIGNAL	SIGNAL
9	SIGNAL	SIGNAL
10	GROUND	GROUND
11	SIGNAL	SIGNAL
12	SIGNAL	SIGNAL
13	GROUND	GROUND
14	SIGNAL	SIGNAL
15	SIGNAL	SIGNAL
16	GROUND	GROUND
17	SIGNAL	SIGNAL
18	SIGNAL	SIGNAL
19	GROUND	GROUND
20	SIGNAL	SIGNAL
21	SIGNAL	SIGNAL
22	GROUND	GROUND
23	SIGNAL	SIGNAL
24	SIGNAL	SIGNAL
25	GROUND	GROUND
26	SIGNAL	SIGNAL
27	SIGNAL	SIGNAL
28	GROUND	GROUND



SOFT TRAY PACKAGING: 2340331-1, 2-2340331-1, 2-2340331-3

1. MATERIAL: HIPS, COLOR: NATURAL
2. QTY. : 8 X 8 = 64 POCKETS PER TRAY
3. TOLERANCES ON TRAY DIMENSIONS ARE REFERENCE

THIS DRAWING IS A CONTROLLED DOCUMENT.		DWN	TE Connectivity Ltd.	
DIMENSIONS: mm		CHK	NAME	
TOLERANCES UNLESS OTHERWISE SPECIFIED:		APVD	56 POSITION SLIVER 2.0 STRADDLE MOUNT	
0-PLG ±		PRODUCT SPEC	SIZE	CAGE CODE
1-PLG ±		APPLICATION SPEC	A2	00779
2-PLG ±		WEIGHT	DRAWING NO. C=2340331	
3-PLG ±		CUSTOMER DRAWING	SCALE	SHEET
4-PLG ±			NTS	4 of 4
ANGLES ±			REV	D
FINISH				

2340331

X-ON Electronics

Largest Supplier of Electrical and Electronic Components

Click to view similar products for [Standard Card Edge Connectors](#) category:

Click to view products by [TE Connectivity](#) manufacturer:

Other Similar products are found below :

[CR7E-30DB-3.96E\(72\)](#) [6364499-1](#) [6565204-6](#) [PKC-156](#) [1437274-4](#) [147889-1](#) [1489165-4](#) [EBT15622B2X](#) [1-582587-1](#) [284-0102-12100](#)
[286-0052-12101A](#) [306022901000000](#) [307-012-502-202](#) [307-056-520-300](#) [2129318-1](#) [245-062-520-350](#) [287-0032-12101](#) [306-028-525-102](#)
[307-072-526-202](#) [345-060-559-303](#) [392-008-559-201](#) [534671-1](#) [341-240-317](#) [345-044-500-300](#) [346-240-318](#) [395-100-524-300](#) [09-07-2032](#)
[10035388-802LF](#) [10115859-011LF](#) [10122859-009LF](#) [10127905-B04B24BLF](#) [530555-1](#) [5-678046-1](#) [73726-0005](#) [66308-1](#) [1-1437275-6](#)
[PEC-07-02-T-S-A](#) [346-014-520-801](#) [307-048-502-202](#) [CE100F22-9-C](#) [CE100F26-7-C](#) [CE100F28-3-D](#) [CE156F18-9-C](#) [CE156F22-5-D](#)
[CE156F22-9-C](#) [CT100F22-2-D](#) [CT100F22-3-D](#) [CT100F24-2-D](#) [CT100F24-3-D](#) [CT100F24-6-C](#)