

REVISIONS				
P	LTR	DESCRIPTION	DATE	APVD
A		FIRST RELEASE	03JUL2019	SZ SZ
A1		ECO-20-010950	05AUG2020	SZ SZ
A3		ECO-21-002794	01MAR2021	RY SH

NOTES, UNLESS OTHERWISE SPECIFIED

1. MATERIAL:
 HOUSING - THERMOPLASTIC, GLASS PREINFORCED, COLOR, BLACK, UL 94V-0
 CONTACTS - COPPER ALLOY.

2. FINISH:
 MATING AREA - 30u" GOLD OVERALL NICKEL.
 SOLDER TAIL - MATTE TIN OVERALL NICKEL.

3. MARK P/N AND DATA CODE IN APPROX. AREA AS SHOWN.

4. NO TOOLING

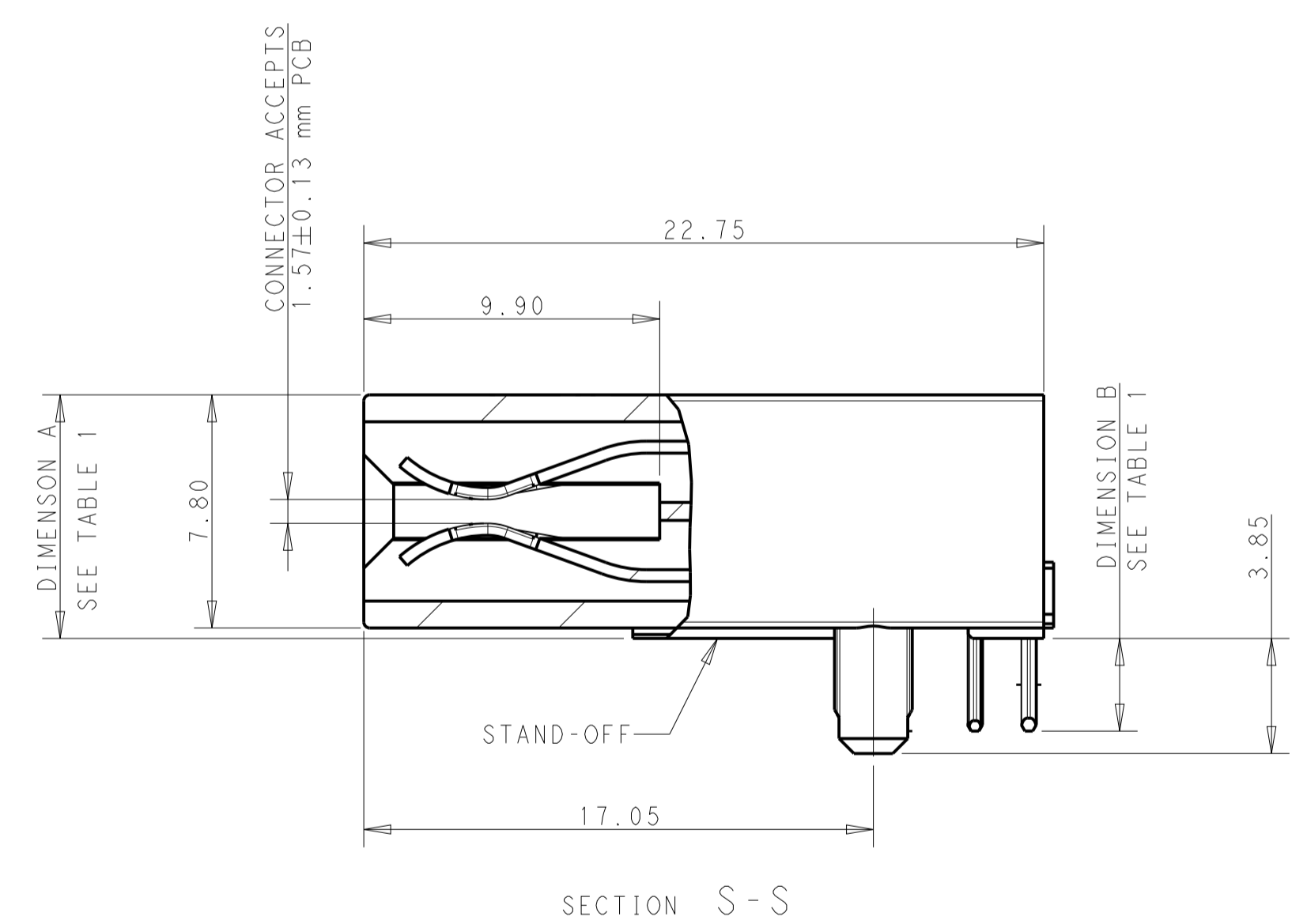
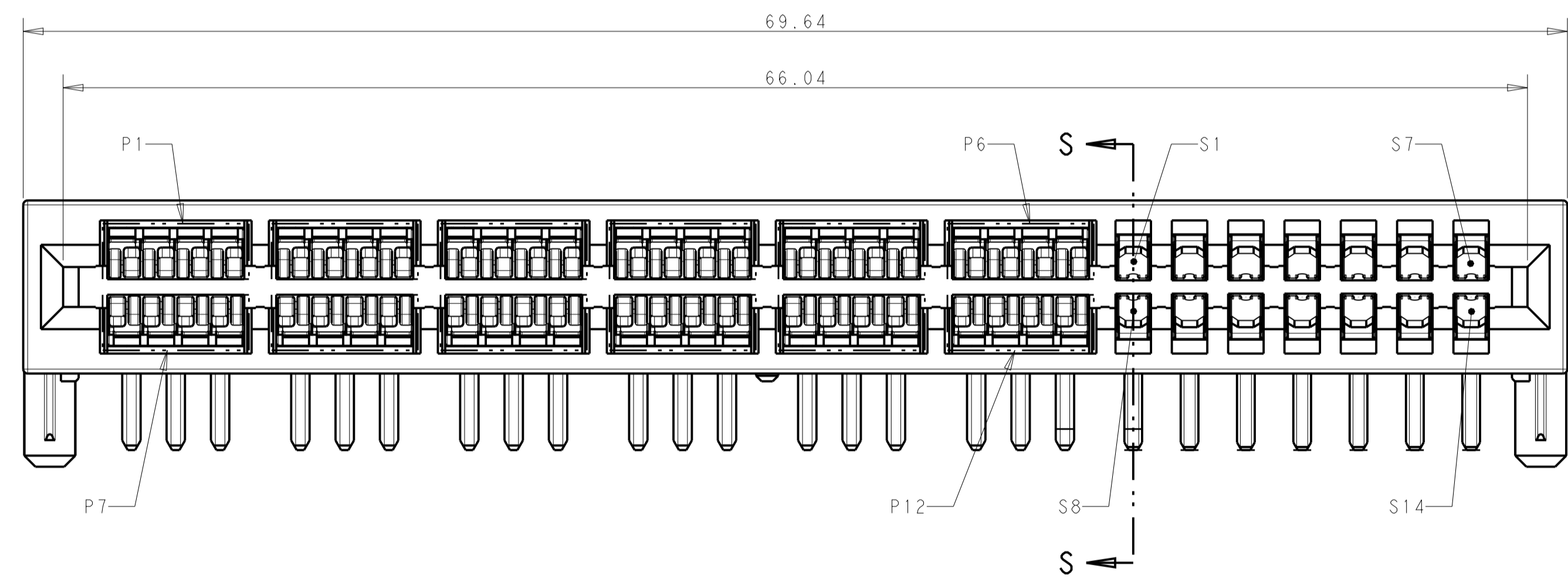
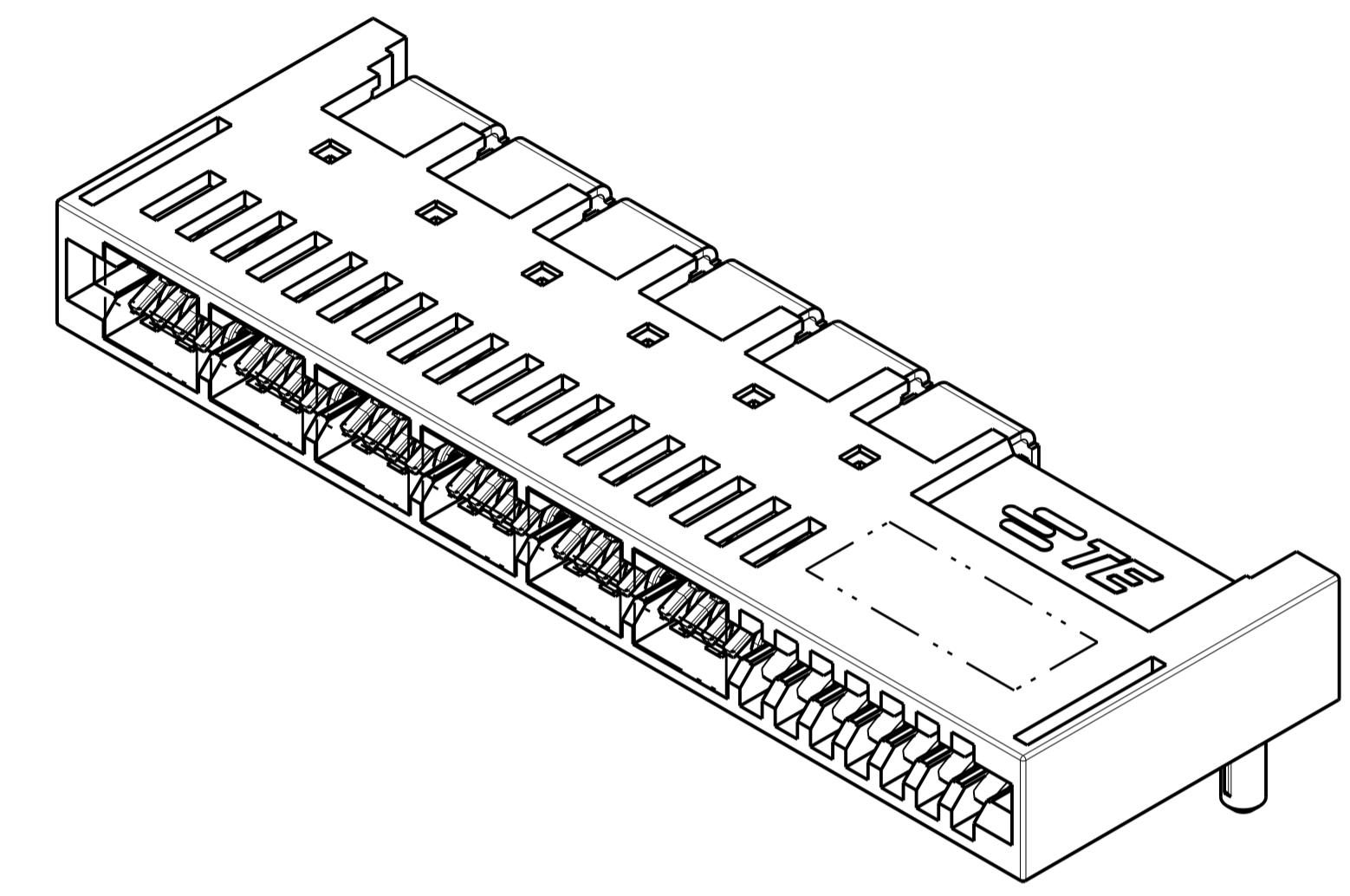
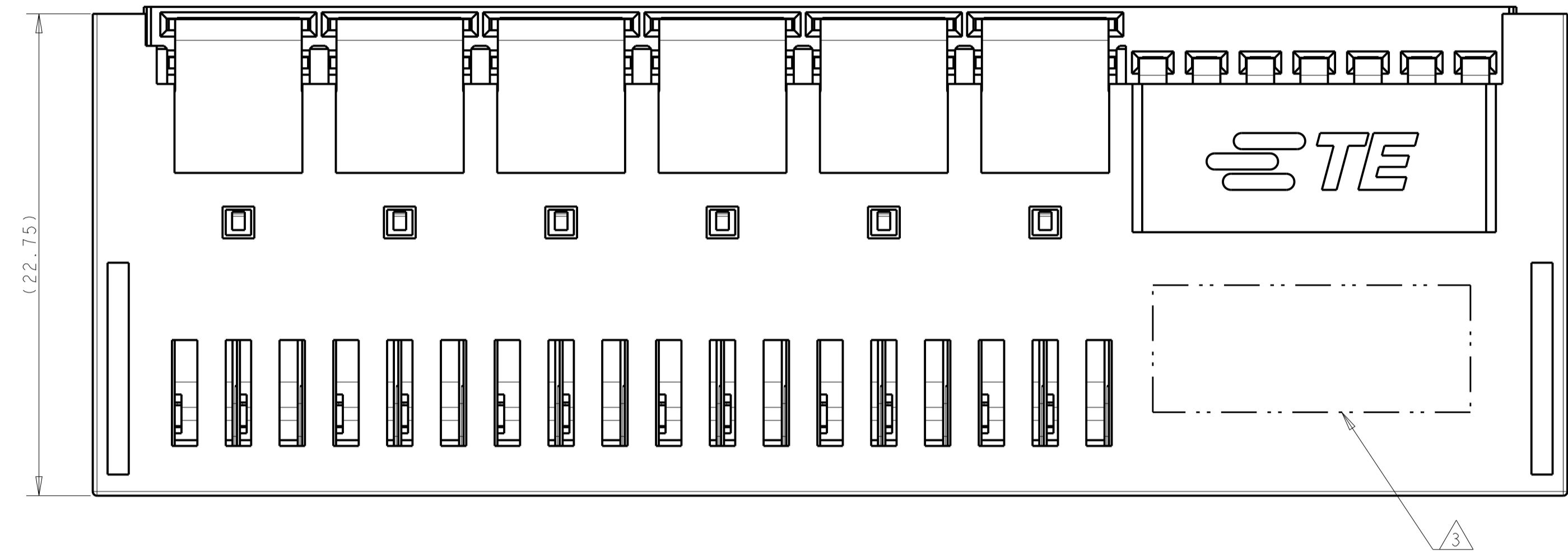
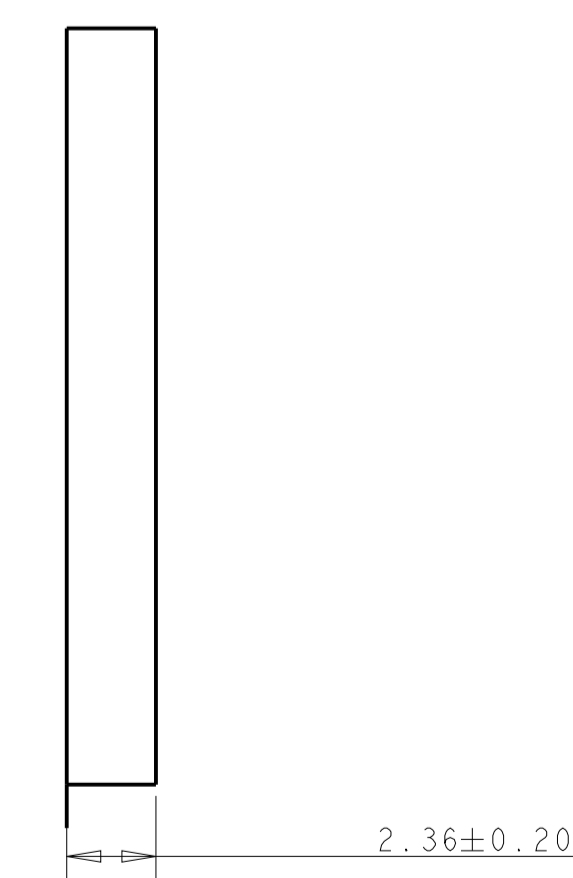
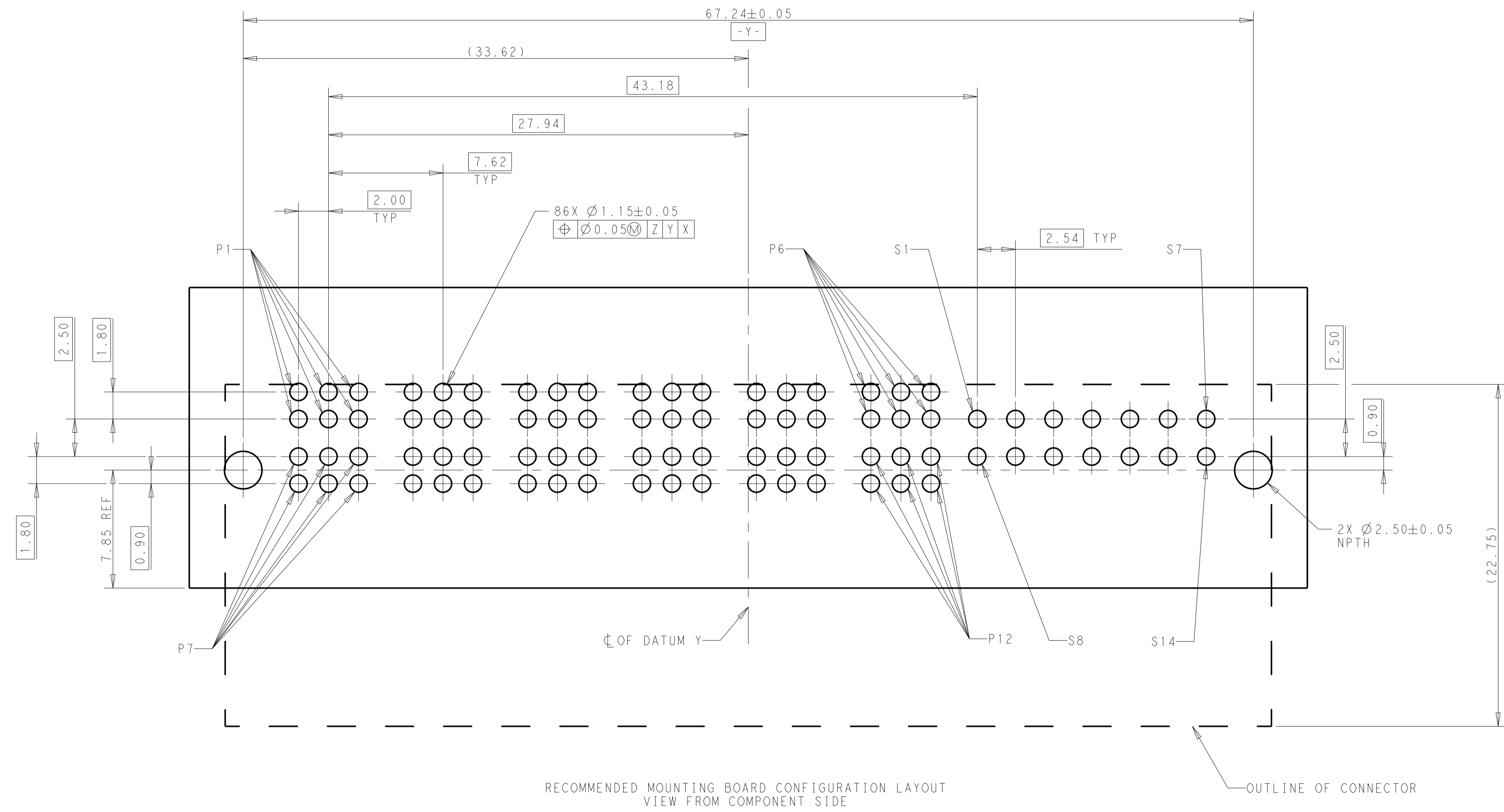
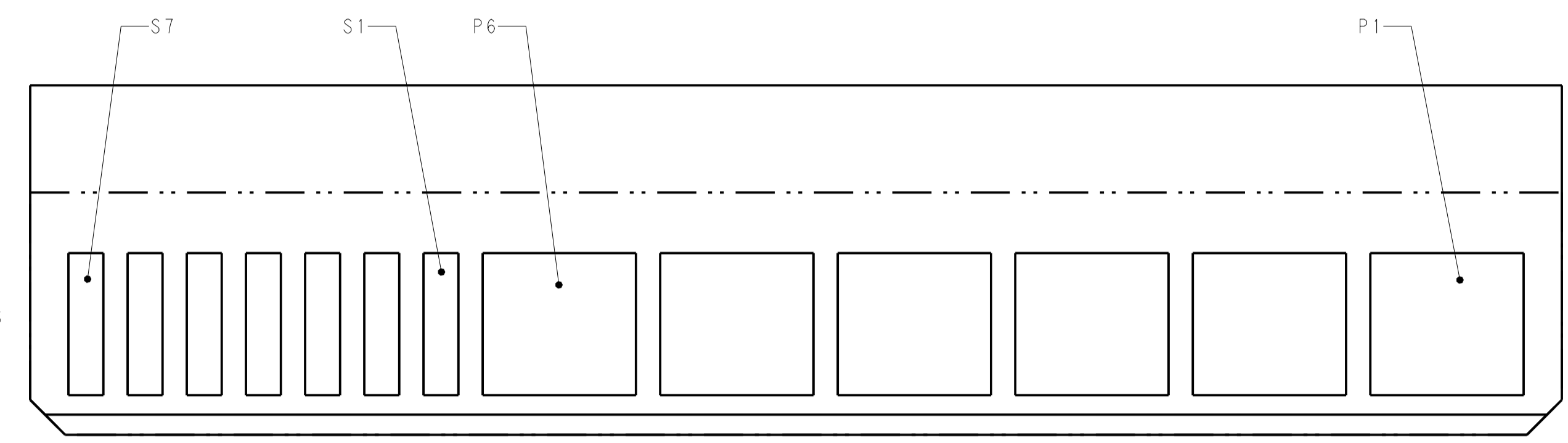
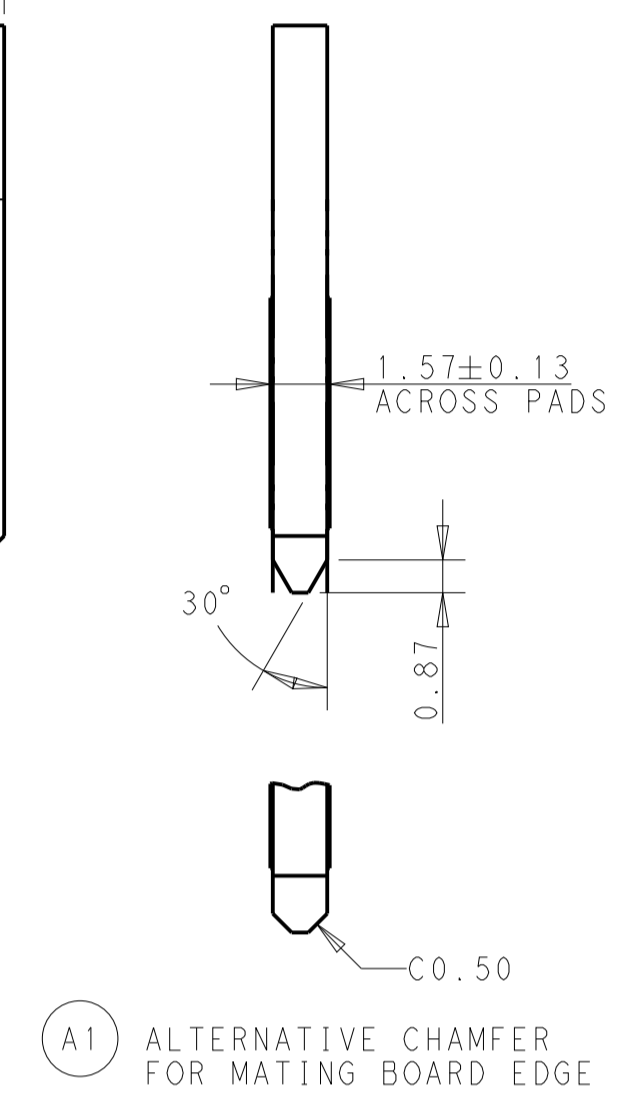
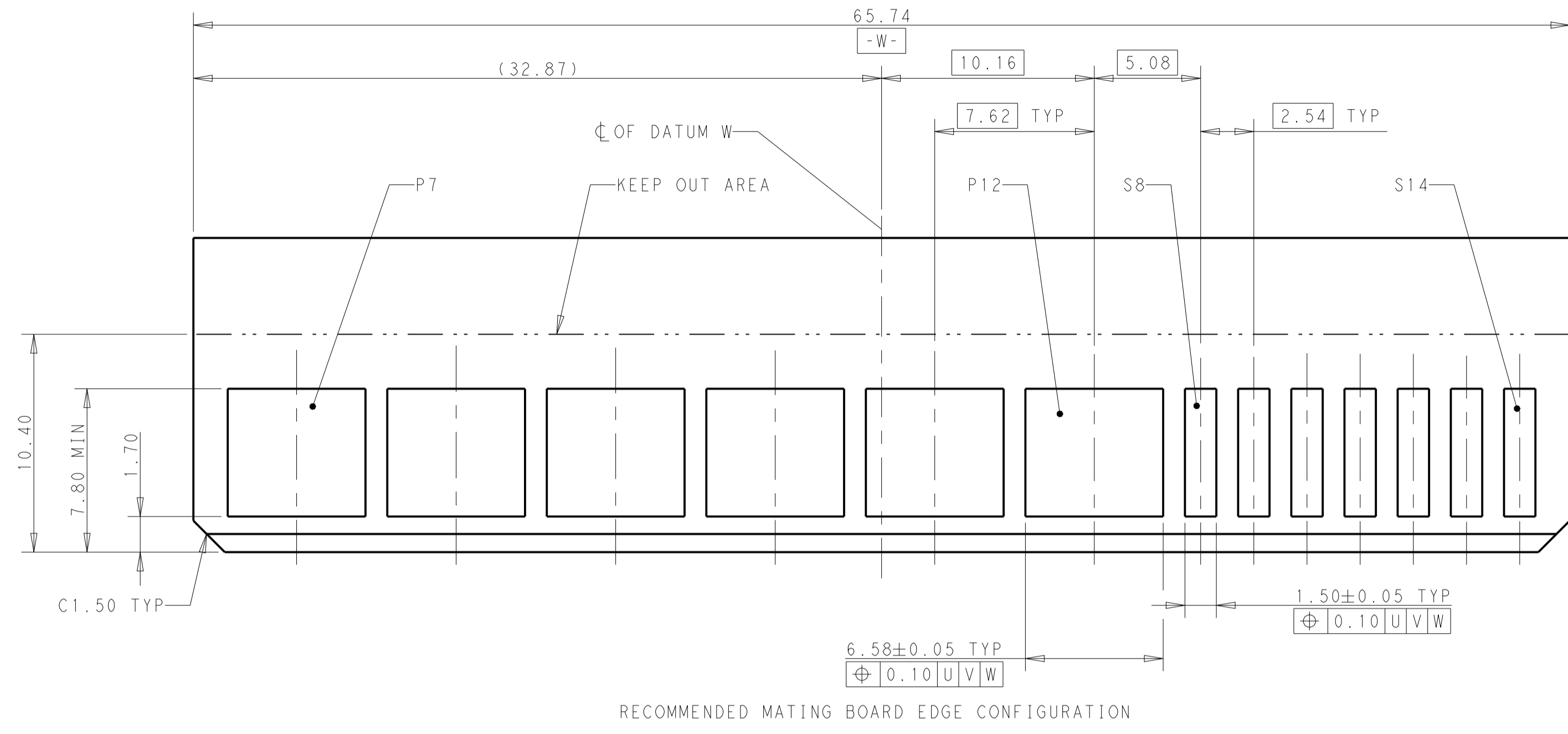


TABLE 1

2.90 ^{+0.35} _{-0.15}	8.35±0.25	2343428-2
3.10 ^{+0.35} _{-0.15}	8.15±0.25	2343428-1
DIMENSION B	DIMENSION A	PART NUMBER

THIS DRAWING IS A CONTROLLED DOCUMENT.		OWN: RICHARD YU	DATE: 01MAR2021	TE Connectivity	
DIMENSIONS: mm		CHK: SEAN HAN	DATE: 01MAR2021	NAME: HDCE PLUS, RIGHT ANGLE	
TOLERANCES UNLESS OTHERWISE SPECIFIED:		APVD: SEAN HAN	DATE: 01MAR2021	PRODUCT SPEC: 2X6 POWER, 2X7 SIGNAL	
0 PLC ±0.25		PRODUCT SPEC: -	APPLICATION SPEC: -	SIZE: A1	
1 PLC ±0.50		APPLICATION SPEC: -	WEIGHT: -	CAGE CODE: 2343428	
2 PLC ±0.25		APPLICATION SPEC: -	CUSTOMER DRAWING	SCALE: 5:1	
3 PLC ±0.25		APPLICATION SPEC: -	RESTRICTED TO: -	SHEET 1 OF 2	
4 PLC ±0.25		APPLICATION SPEC: -	SCALE: 5:1	REV: A3	
ANGLES ±0.25		APPLICATION SPEC: -	SCALE: 5:1	REV: A3	
FINISH: -		APPLICATION SPEC: -	SCALE: 5:1	REV: A3	

REVISIONS				
P.	LTN.	DESCRIPTION	DATE	APVD.
-	-	SEE SHEET 1	-	-



NOTES FOR MOUNTING BOARD, UNLESS OTHERWISE SPECIFIED:
 1. PLATED THROUGH HOLE, FINISHED HOLE SIZE: 1.15mm. DRILL HOLE SIZE: 1.25±0.025mm.
 2. COPPER PLATING THICKNESS: 0.025~0.05mm.
 3. SURFACE FINISH: OSP OR IMMERSION TIN PLATING IS RECOMMENDED.

RECOMMENDED MOUNTING BOARD CONFIGURATION LAYOUT VIEW FROM COMPONENT SIDE

OUTLINE OF CONNECTOR

THIS DRAWING IS A CONTROLLED DOCUMENT.		OWN: RICHARD YU	DATE: 01MAR2021	TE Connectivity
DIMENSIONS: mm		CHK: SEAN HAN	DATE: 01MAR2021	
TOLERANCES UNLESS OTHERWISE SPECIFIED: 0 PLC ± 1 PLC ±0.20 2 PLC ±0.10 3 PLC ± 4 PLC ± ANGLES ±		NAME: HDCE PLUS, RIGHT ANGLE PRODUCT SPEC: 2X6 POWER, 2X7 SIGNAL APPLICATION SPEC:		SIZE: A1 CAGE CODE: 100779 DRAWING NO: 2343428
MATERIAL:		WEIGHT:	CUSTOMER DRAWING	
		SCALE: 5:1		SHEET 2 OF 2

X-ON Electronics

Largest Supplier of Electrical and Electronic Components

Click to view similar products for [Standard Card Edge Connectors](#) category:

Click to view products by [TE Connectivity](#) manufacturer:

Other Similar products are found below :

[CR7E-30DB-3.96E\(72\)](#) [6364499-1](#) [6565204-6](#) [PKC-156](#) [1437274-4](#) [147889-1](#) [1489165-4](#) [EBT15622B2X](#) [1-582587-1](#) [284-0102-12100](#)
[286-0052-12101A](#) [306022901000000](#) [307-012-502-202](#) [307-056-520-300](#) [2129318-1](#) [245-062-520-350](#) [287-0032-12101](#) [306-028-525-102](#)
[307-072-526-202](#) [345-060-559-303](#) [392-008-559-201](#) [534671-1](#) [341-240-317](#) [345-044-500-300](#) [346-240-318](#) [395-100-524-300](#) [09-07-2032](#)
[10035388-802LF](#) [10115859-011LF](#) [10122859-009LF](#) [10127905-B04B24BLF](#) [530555-1](#) [5-678046-1](#) [73726-0005](#) [66308-1](#) [1-1437275-6](#)
[PEC-07-02-T-S-A](#) [346-014-520-801](#) [307-048-502-202](#) [CE100F22-9-C](#) [CE100F26-7-C](#) [CE100F28-3-D](#) [CE156F18-9-C](#) [CE156F22-5-D](#)
[CE156F22-9-C](#) [CT100F22-2-D](#) [CT100F22-3-D](#) [CT100F24-2-D](#) [CT100F24-3-D](#) [CT100F24-6-C](#)