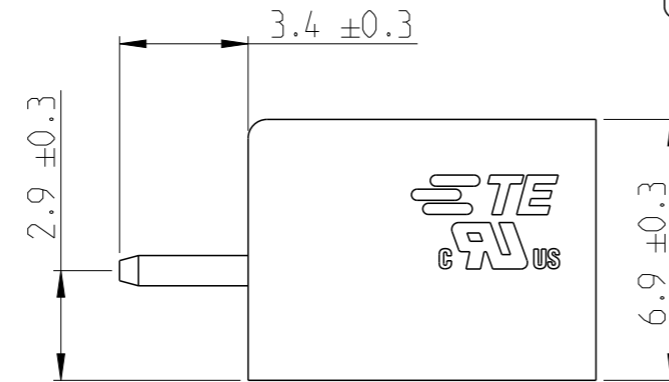
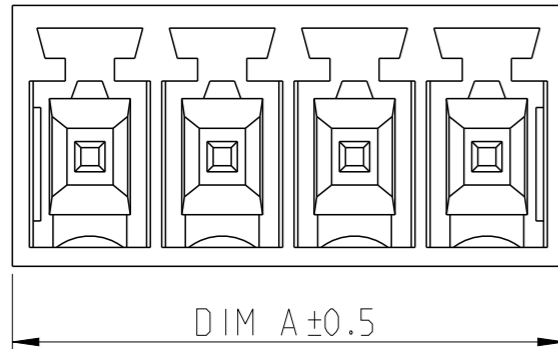
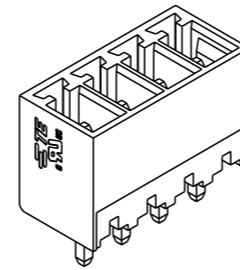


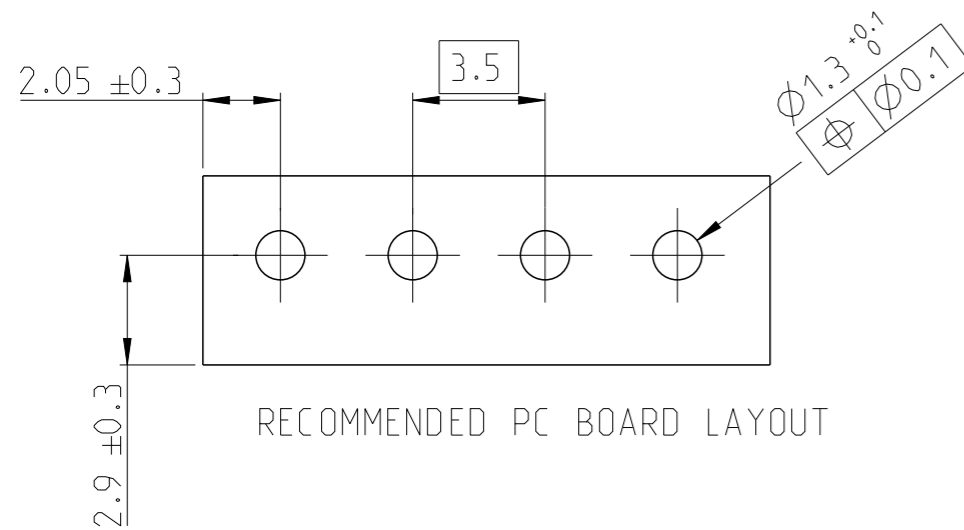
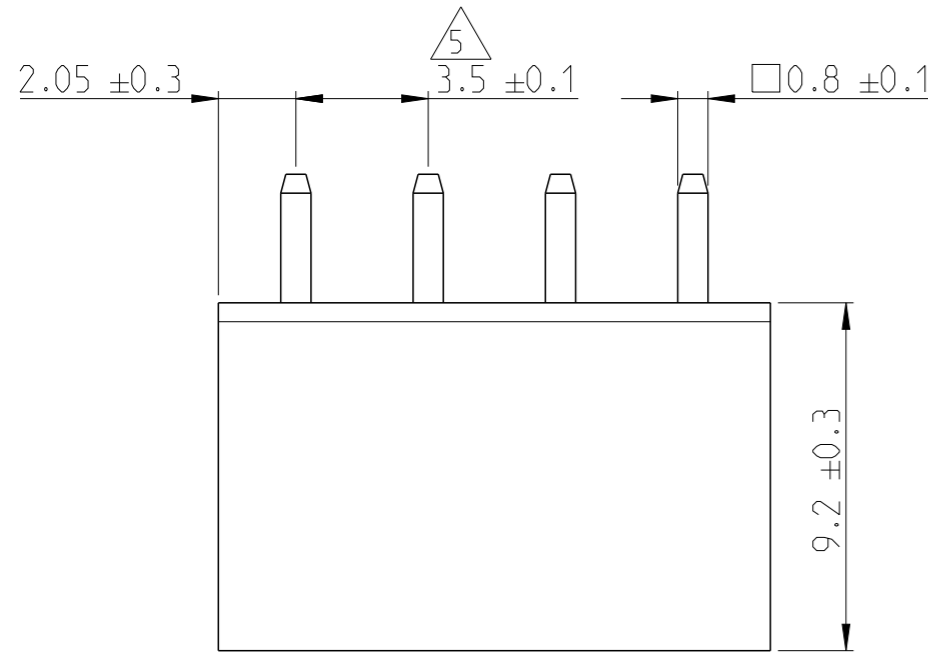
| P | LTR | DESCRIPTION             | DATE      | DWN | APVD |
|---|-----|-------------------------|-----------|-----|------|
|   | A   | RELEASED FOR PRODUCTION | 06AUG2019 | RK  | PS   |
|   |     |                         |           |     |      |
|   |     |                         |           |     |      |

2:1



NOTES:

- MATERIAL AND FINISH:  
HOUSING : POLYAMIDE 66, UL94V-0, COLOR GREEN.  
TERMINAL : COPPER ALLOY, TIN PLATED.
  - MECHANICAL  
MIN. PC BOARD HOLES DIAMETER : 1.3 mm
  - ELECTRICAL  
RATED VOLTAGE : 150 V  
RATED CURRENT : 12 A  
INSULATION RESISTANCE : >2000 M Ohm (500V DC)
  - OPERATING TEMPERATURE RANGE: -40°C TO +105°C
- △ NOT CUMULATIVE TOLERANCE.



| 56.6  | 16         | 1-2351886-6 |
|-------|------------|-------------|
| 53.1  | 15         | 1-2351886-5 |
| 49.6  | 14         | 1-2351886-4 |
| 46.1  | 13         | 1-2351886-3 |
| 42.6  | 12         | 1-2351886-2 |
| 39.1  | 11         | 1-2351886-1 |
| 35.6  | 10         | 1-2351886-0 |
| 32.1  | 9          | 2351886-9   |
| 28.6  | 8          | 2351886-8   |
| 25.1  | 7          | 2351886-7   |
| 21.6  | 6          | 2351886-6   |
| 18.1  | 5          | 2351886-5   |
| 14.6  | 4          | 2351886-4   |
| 11.1  | 3          | 2351886-3   |
| 7.6   | 2          | 2351886-2   |
| DIM A | NO. OF POS | PART NUMBER |

|  |  |                                |  |                    |                         |
|--|--|--------------------------------|--|--------------------|-------------------------|
| THIS DRAWING IS A CONTROLLED DOCUMENT.                                 |  | DWN 06-Aug-19<br>RAGHAVENDRA.K | TE Connectivity  |                    |                         |
| DIMENSIONS: mm   |  | CHK 01JUL2019<br>KARTHIK.JK    |  |                    |                         |
| TOLERANCES UNLESS OTHERWISE SPECIFIED:                                 |  | APVD 02JUL2019<br>PRASHANTH.S  | NAME<br>HEADER 180 DEG. 3.5MM PITCH<br>TAIL LENGTH 3.4mm |                    |                         |
| 0 PLC ±<br>1 PLC ±0.3<br>2 PLC ±0.25<br>3 PLC ±<br>4 PLC ±<br>ANGLES ± |  | PRODUCT SPEC                   | RESTRICTED TO  |                    |                         |
| MATERIAL<br>SEE NOTES  |  | APPLICATION SPEC               | SIZE<br>A3   | CAGE CODE<br>00779 | DRAWING NO<br>C-2351886 |
| FINISH<br>SEE NOTES  |  | WEIGHT                         | SCALE 5:1 SHEET 1 OF 1 REV A                             |                    |                         |
|  |  | CUSTOMER DRAWING               |  |                    |                         |

## X-ON Electronics

Largest Supplier of Electrical and Electronic Components

*Click to view similar products for [Barrier Terminal Blocks](#) category:*

*Click to view products by [TE Connectivity](#) manufacturer:*

Other Similar products are found below :

[CR151D20104](#) [670A-RZ-15-KT20](#) [6C1N03](#) [6PCR-02](#) [6PCR-02-008](#) [6PCR-05-008](#) [6PCR-08-008](#) [6PCR-09-008](#) [6PCR-13-006](#) [6PCR-15-006](#) [6PCR-21-006](#) [6PCV-06-008](#) [6PCV-06-716](#) [6PCV-09-001](#) [6PCV-10-009](#) [6PCV-15-008](#) [6PCV-17-1206](#) [6PCV-20-323](#) [6PCV-20-720](#) [6PCV-30-006](#) [6STR-06-006](#) [6STR-08-006](#) [6STR-12-008](#) [6STR-13-006](#) [6STR-14-008](#) [6STR-16-008](#) [6STR-17-008](#) [6STR-21-008](#) [6STR-25-008](#) [6STR-27-008](#) [6STV-03-006](#) [6STV-03-008](#) [6STV-04-006](#) [6STV-09-006](#) [6STV-10-006](#) [6WWR-03-693](#) [6WWV-12-008](#) [72212603](#) [72504-C-50](#) [72506-C](#) [72507-C-50](#) [73203](#) [75505-C](#) [75505-C-50](#) [75510-C](#) [77010-50](#) [7C1N08](#) [812-GP-3/4ST-09](#) [8-1437402-5](#) [8-1437402-7](#)