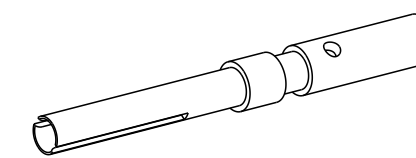
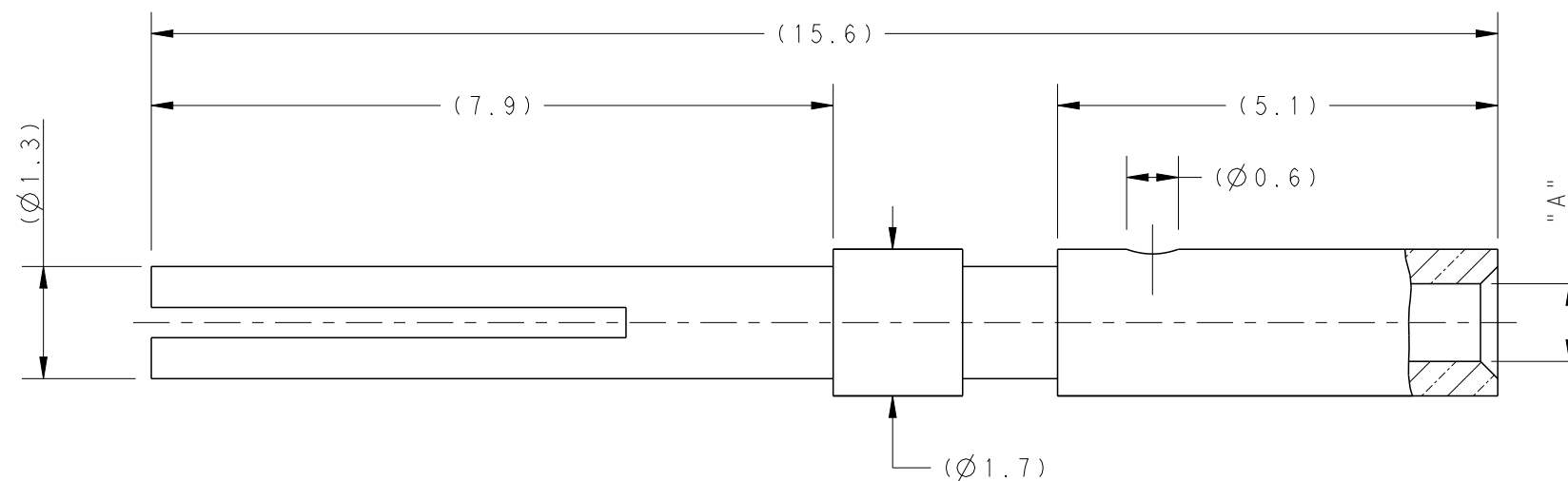
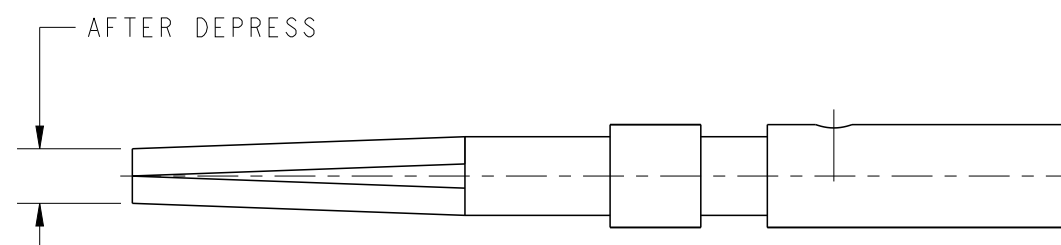


P	LTR	DESCRIPTION	DATE	DWN	APVD
	A	ECO-21-006862	16 JUN 2021	NR	MV



SCALE 4:1



SCALE 8:1

AFTER DEPRESS VIEW

NOTES;

- ( ): DIMENSIONS FOR INFORMATION  
: INSPECTION DIMENSIONS.
- FRAMED DIMENSIONS ARE TO BE STRICTLY ADHERED TO.
- MATERIAL - BRONZE, GOLD PLATING
- ALL DIMENSIONS ARE CONSIDERED TO BE AFTER PLATING.
- MATERIAL COMPLIANCE WITH ROHS AND REACH.

PART NUMBER	WIRE SIZE	"A"	PLATING
2358997-1	AWG 22-26	(Ø0.9)	GOLD
2358997-2	AWG 18-20	(Ø1.1)	GOLD

THIS DRAWING IS A CONTROLLED DOCUMENT.		DWN RAJAGOPAL N 21MAY2021	TE Connectivity	
DIMENSIONS: mm		CHK M. BONNIN 21MAY2021		
		APVD M. VIMARD 21MAY2021		
TOLERANCES UNLESS OTHERWISE SPECIFIED:		PRODUCT SPEC	NAME M12 FEMALE CONTACT A8 CODE	
0 PLC ±- 1 PLC ±- 2 PLC ±- 3 PLC ±- 4 PLC ±- ANGLES ±-		APPLICATION SPEC	SIZE A3	
MATERIAL SEE NOTES		WEIGHT	CAGE CODE 00779	DRAWING NO C-2358997
FINISH		CUSTOMER DRAWING	SCALE 12:1	SHEET 1 OF 1
			RESTRICTED TO	REV A

## X-ON Electronics

Largest Supplier of Electrical and Electronic Components

*Click to view similar products for [Terminals category](#):*

*Click to view products by [TE Connectivity manufacturer](#):*

Other Similar products are found below :

[00-054007-01074-6](#) [00-054007-70206-1](#) [00-054007-70210-8](#) [00-054007-70217-7](#) [00-054007-70228-3](#) [00-054007-70256-6](#) [00-054007-70316-7](#) [00-054007-49560-4](#) [00-054007-70209-2](#) [00-054007-70231-3](#) [00-054007-70241-2](#) [00-054007-70242-9](#) [00-054007-70246-7](#) [00-054007-70263-4](#) [00-054007-70288-7](#) [00-054007-70290-0](#) [00-054007-70300-6](#) [00-054007-70304-4](#) [01-2900-1-04412](#) [00581P0075](#) [600TS-10](#) [605601-1](#) [60598-1-CUT-TAPE](#) [60617-1-C](#) [61314-6-C](#) [61810-3](#) [62149-1](#) [626-0194](#) [63-S](#) [M55155/059I03](#) [M55155/079C01](#) [M55155/099B03](#) [M55155/099H02](#) [M55155/109H01](#) [M55155/12XH05](#) [M55155/29-5S](#) [M55155/29XJ08](#) [M55155/30-6S](#) [M55155/30-9S](#) [M55155/30XI09](#) [M6-14RSX](#) [696683-1](#) [696861-1](#) [696999-1](#) [M86700006](#) [D18-110B-C](#) [D18-110B-M](#) [701-1936](#) [701-1955](#) [701-2003](#)