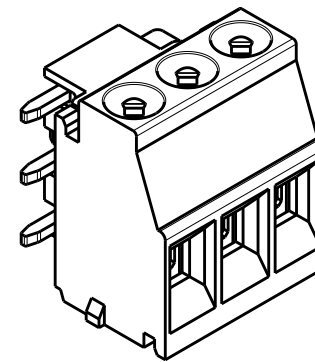


P	LTR	DESCRIPTION	DATE	DWN	APVD
	A	PRODUCTION RELEASE	16JUN2020	SS	PS



1. MATERIALS & FINISH

HOUSING : HIGH TEMPERATURE PA, UL94 V0,
 COLOR -BLACK
 SCREW M3 : COPPER ALLOY, NICKEL PLATED
 CLAMP : COPPER ALLOY, NICKEL PLATED
 CONTACT : COPPER ALLOY, TIN PLATED

2. MECHANICAL

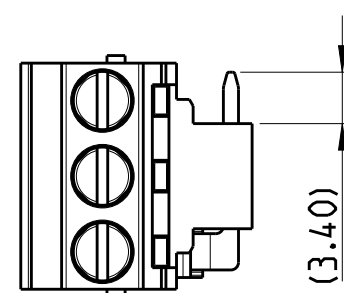
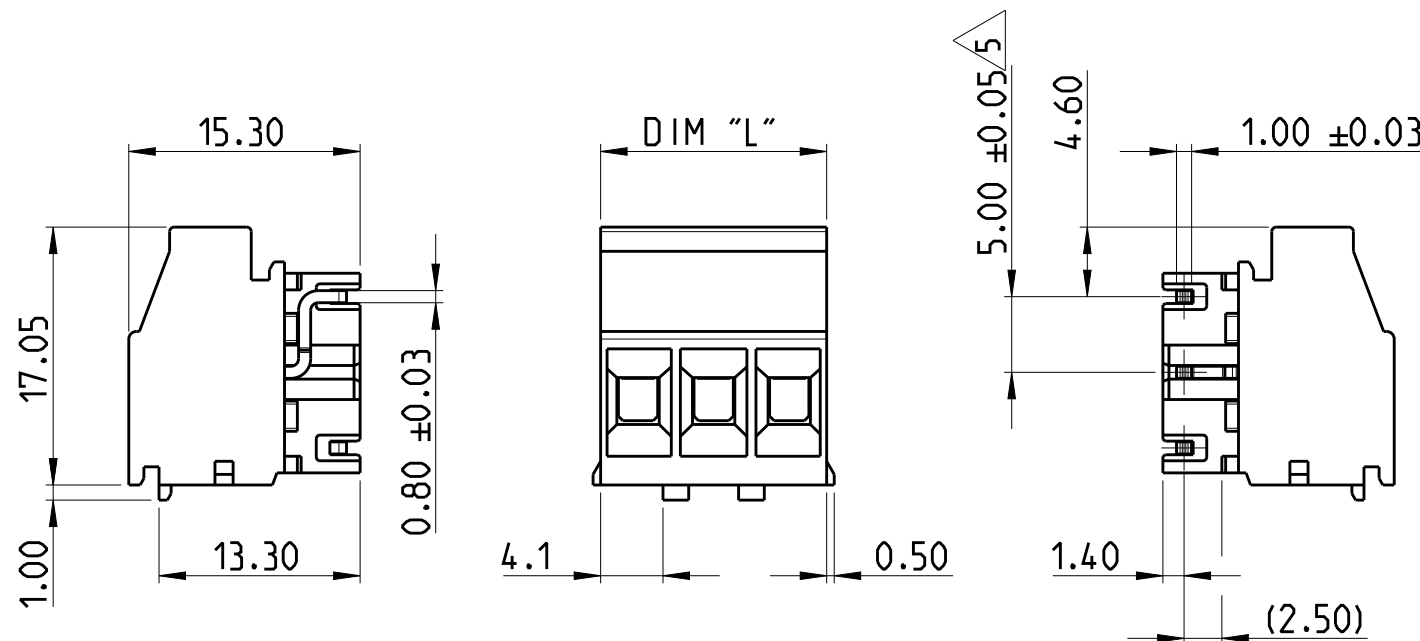
WIRE STRIPPING LENGTH : 5.5-6.5 mm
 MIN. PC BOARD HOLES DIAMETER : 1.4 mm
 MAX. PC BOARD THICKNESS : 2.4 mm
 RECOMMENDED TIGHTENING TORQUE FOR SCREW: 0.5 Nm.

3. ELECTRICAL

WIRE RANGE : 12 - 30 AWG
 MAX. VOLTAGE : 300 V
 MAX. CURRENT : 17.5 A
 CONTACT RESISTANCE : <15 m Ohm
 INSULATION RESISTANCE : >1000 M Ohm (500V DC)

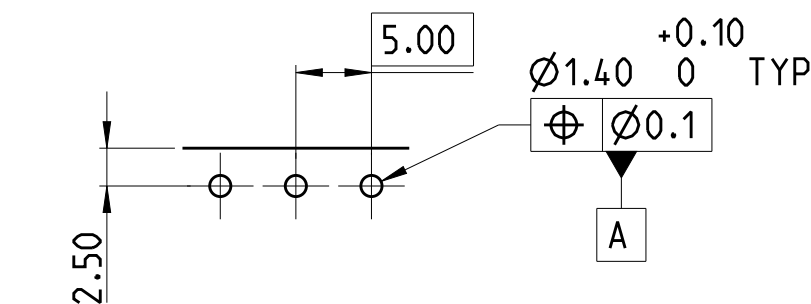
4. OPERATING TEMPERATURE RANGE: -40°C TO +105°C

△ TOLERANCE NOT CUMULATIVE.



AS SHOWN 2363965-3

14.95	3	2363965-3
9.95	2	2363965-2
DIM "L"	POSITION	PART NUMBER



RECOMMENDED PC BOARD LAYOUT

THIS DRAWING IS A CONTROLLED DOCUMENT.		DWN RAGHAVENDRA.K 14OCT2019		
DIMENSIONS: mm		CHK PRASHANTH.S 14OCT2019		
TOLERANCES UNLESS OTHERWISE SPECIFIED:		APVD PRASHANTH.S 14OCT2019	NAME NORMO-ORTHOGONAL LEFT TERMINAL BLOCK PITCH 5.00mm	
0 PLC ±0.3		PRODUCT SPEC -	SIZE A3	
1 PLC ±0.25		APPLICATION SPEC -	CAGE CODE 00779	DRAWING NO C-2363965
2 PLC ±0.25		WEIGHT -	RESTRICTED TO -	
3 PLC ±		CUSTOMER DRAWING	SCALE 2:1	SHEET 1 OF 1
4 PLC ±				REV A
ANGLES ±				
FINISH SEE NOTES				

X-ON Electronics

Largest Supplier of Electrical and Electronic Components

Click to view similar products for [Pluggable Terminal Blocks](#) category:

Click to view products by [TE Connectivity](#) manufacturer:

Other Similar products are found below :

[57.510.0053](#) [MC 1.5/ 6-ST-3.5 GY AU](#) [734-104](#) [734-302](#) [8-141-P](#) [8426620000](#) [860505](#) [860516](#) [860810](#) [GBPACX-12](#) [93.731.4953.0](#) [PV05-5,08-K](#) [PVP02-5,00](#) [PVP03-3,50](#) [PVP04-3,50](#) [PVS02-5,00](#) [1-1986160-3](#) [1377680000](#) [1531000000](#) [1546228-5](#) [ELFH16150](#) [ELFP03110](#) [ELFP10210](#) [ELFT06250](#) [ELVP03100](#) [1700101](#) [1700410](#) [1700425](#) [1702246](#) [1705229](#) [1710175](#) [1714537](#) [1717806](#) [1719600](#) [1728941](#) [1734692](#) [1734795](#) [1736036](#) [1740194](#) [1740291](#) [1740628](#) [1740990](#) [1746952](#) [1750207](#) [1752441](#) [1752865](#) [1754115](#) [1754144](#) [1756913](#) [1760051](#)