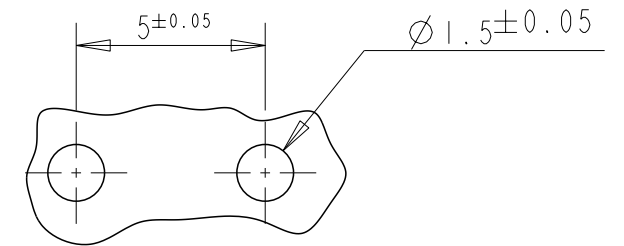
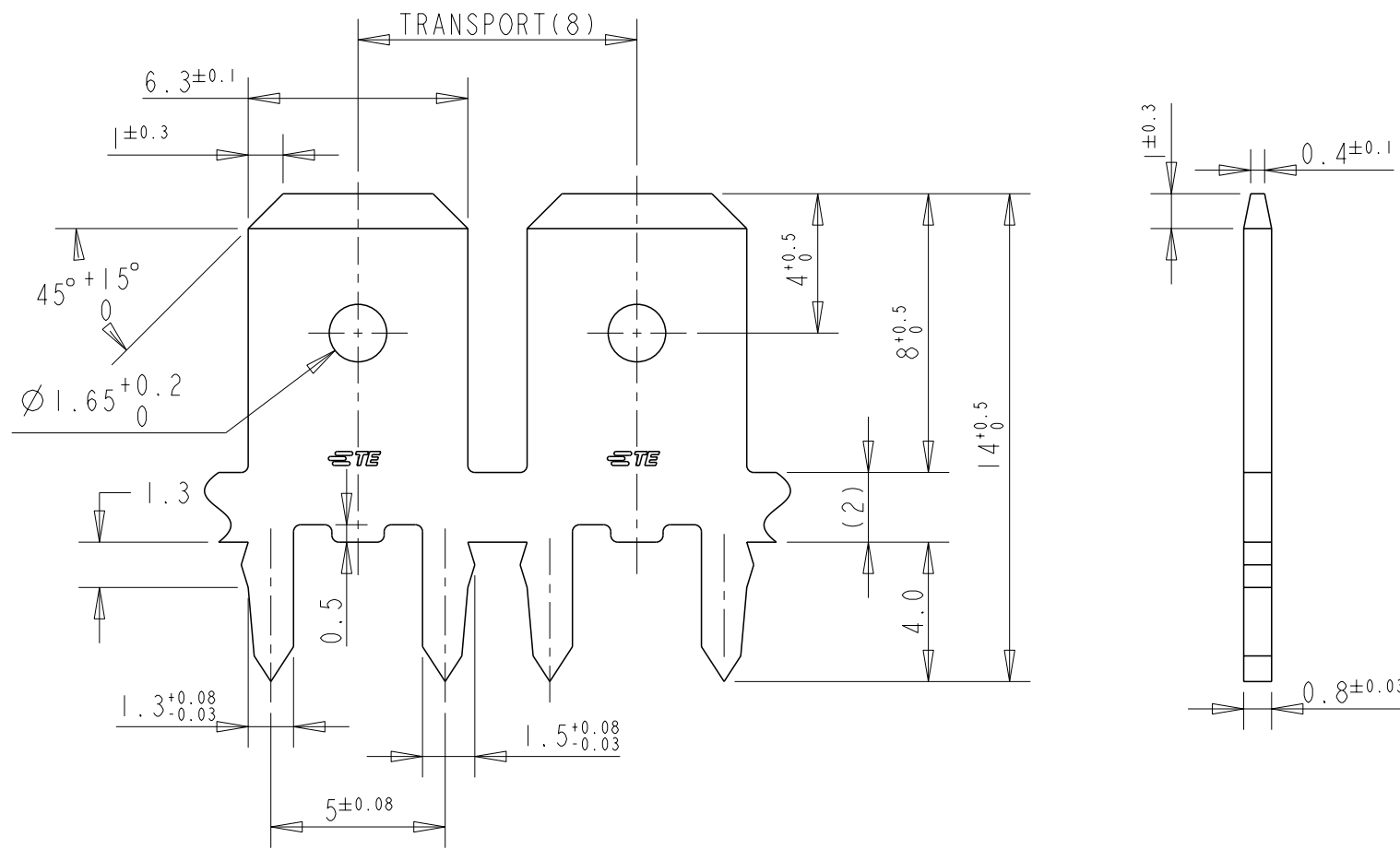


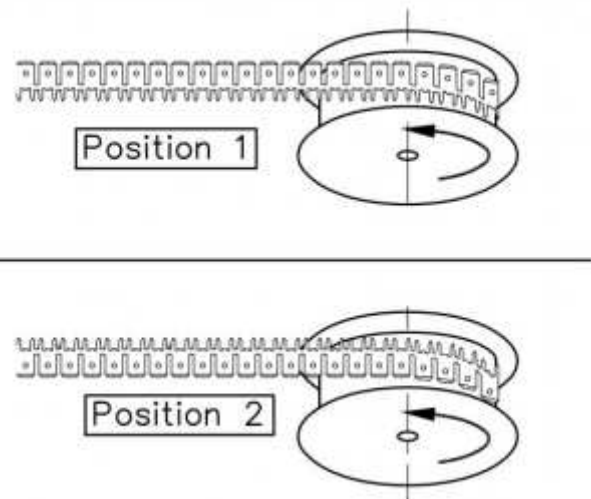
| REVISIONS | | | | |
|-----------|-----|-----------------------|---------|----------|
| P | LTR | DESCRIPTION | DATE | DWN APVD |
| | A | RELEASE TO PRODUCTION | 28MAY21 | MK EW |

NOTE:
 1. CONTINUOUS STRIP ON REELS.
 2. MATTE TIN PLATE WITH NICKEL UNDERPLAYER.



SCALE 5:1
PCB LAYOUT

DIRECTION OF TRANSPORT OF SALE SPOOLS



| | |
|--|--|
| THIS DRAWING IS A CONTROLLED DOCUMENT. | |
| DIMENSIONS: mm | TOLERANCES UNLESS OTHERWISE SPECIFIED: 0 PLC ±- 1 PLC ±0.3 2 PLC ±0.15 3 PLC ±- 4 PLC ±- ANGLES ±- FINISH - |
| MATERIAL AS TABLE | - |

| | | |
|------------------|------------|-----------|
| DWN | DON TANG | 12MAY2020 |
| CHK | DAISY LI | 12MAY2020 |
| APVD | ERIC WANG | 12MAY2020 |
| PRODUCT SPEC | 108-106562 | |
| APPLICATION SPEC | 114-2115 | |
| WEIGHT | - | |
| CUSTOMER DRAWING | | |

| | | | |
|---|-----------|--------------|---------------|
| STANDARD | 2 | CuZn30 | 2376582-2 |
| REELING | FINISH | MATERIAL | PN |
| STE TE Connectivity | | | |
| NAME TAB.FASTON. P.C.BOARD 6.35[.250] | | | |
| SIZE | CAGE CODE | DRAWING NO | RESTRICTED TO |
| A3 | 00779 | C=2376582 | - |
| SCALE 5:1 | | SHEET 1 OF 1 | REV A |

Printed on 1 Jun 2021 11:47 (India Standard Time) from TE39T007

X-ON Electronics

Largest Supplier of Electrical and Electronic Components

Click to view similar products for [Terminals category](#):

Click to view products by [TE Connectivity manufacturer](#):

Other Similar products are found below :

[00-054007-01074-6](#) [00-054007-70206-1](#) [00-054007-70210-8](#) [00-054007-70217-7](#) [00-054007-70228-3](#) [00-054007-70256-6](#) [00-054007-70316-7](#) [00-054007-49560-4](#) [00-054007-70209-2](#) [00-054007-70231-3](#) [00-054007-70241-2](#) [00-054007-70242-9](#) [00-054007-70246-7](#) [00-054007-70263-4](#) [00-054007-70288-7](#) [00-054007-70290-0](#) [00-054007-70300-6](#) [00-054007-70304-4](#) [01-2900-1-04412](#) [00581P0075](#) [600TS-10](#) [605601-1](#) [60598-1-CUT-TAPE](#) [60617-1-C](#) [61314-6-C](#) [61810-3](#) [62149-1](#) [626-0194](#) [63-S](#) [M55155/059I03](#) [M55155/079C01](#) [M55155/099B03](#) [M55155/099H02](#) [M55155/109H01](#) [M55155/12XH05](#) [M55155/29-5S](#) [M55155/29XJ08](#) [M55155/30-6S](#) [M55155/30-9S](#) [M55155/30XI09](#) [M6-14RSX](#) [696683-1](#) [696861-1](#) [696999-1](#) [M86700006](#) [D18-110B-C](#) [D18-110B-M](#) [701-1936](#) [701-1955](#) [701-2003](#)