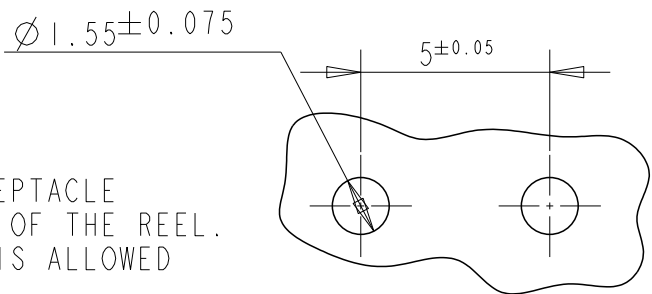
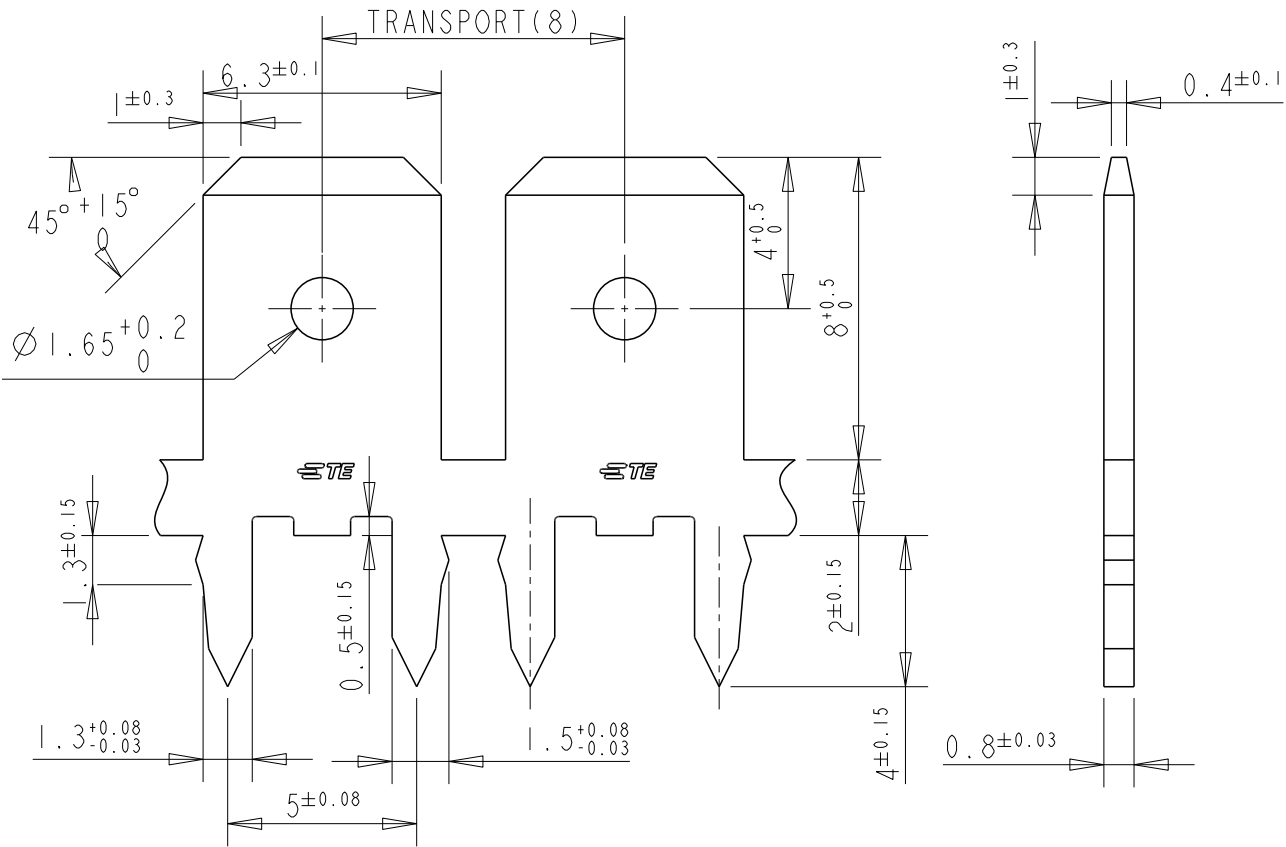


REVISIONS					
P	LTR	DESCRIPTION	DATE	DWN	APVD
	A	INITIAL RELEASE	06SEP21	DT	EW




- NOTE:
- 1.USAGE PRIORITY: BSH
 - 2.WEIGHT: 0.48g
 - 3.PLATING: Sn 4µ min
 - 4.SEPARATING PAPER ON THE REEL IS ACCEPTABLE ONLY AT THE BEGINING AND AT THE END OF THE REEL. NO INTERRUPTION OF CONNECTOR CHAIN IS ALLOWED INSIDE THE REEL.
 5. MATTE TIN PLATE WITH NICKEL UNDERLAYER

PCB HOLE LAYOUT
COMPONENT SIDE

DIRECTION OF TRANSPORT OF SALE SPOOLS



STANDARD	5	BRASS	2376595-2
REELING	PLATING	MATERIAL	PN

DIMENSIONS: mm	DWN DON TANG	12JUN2020	MATERIAL	BRASS	FINISH	-
	CHK DAISY LI	12JUN2020	 TE Connectivity			
TOLERANCES UNLESS OTHERWISE SPECIFIED:	APVD ERIC WANG	12JUN2020				
0 PLC ±-	PRODUCT SPEC	-	NAME TAB. FANSTON. P.C.BOARD .250 SERIES			
1 PLC ±0.1	APPLICATION SPEC	114-2115	SIZE	A4	CAGE CODE	00779
2 PLC ±-	WEIGHT	-	DRAWING NO	C=2376595		
3 PLC ±-	CUSTOMER DRAWING	SCALE		3:1	SHEET	1 OF 1
4 PLC ±-			RESTRICTED TO	-		
ANGLES ±-			REV	A		

© 2020 TE Connectivity. All Rights Reserved.

X-ON Electronics

Largest Supplier of Electrical and Electronic Components

Click to view similar products for [Terminals category](#):

Click to view products by [TE Connectivity manufacturer](#):

Other Similar products are found below :

[00-054007-01074-6](#) [00-054007-70206-1](#) [00-054007-70210-8](#) [00-054007-70217-7](#) [00-054007-70228-3](#) [00-054007-70256-6](#) [00-054007-70316-7](#) [00-054007-49560-4](#) [00-054007-70209-2](#) [00-054007-70231-3](#) [00-054007-70241-2](#) [00-054007-70242-9](#) [00-054007-70246-7](#) [00-054007-70263-4](#) [00-054007-70288-7](#) [00-054007-70290-0](#) [00-054007-70300-6](#) [00-054007-70304-4](#) [01-2900-1-04412](#) [00581P0075](#) [600TS-10](#) [605601-1](#) [60598-1-CUT-TAPE](#) [60617-1-C](#) [61314-6-C](#) [61810-3](#) [62149-1](#) [626-0194](#) [63-S](#) [M55155/059I03](#) [M55155/079C01](#) [M55155/099B03](#) [M55155/099H02](#) [M55155/109H01](#) [M55155/12XH05](#) [M55155/29-5S](#) [M55155/29XJ08](#) [M55155/30-6S](#) [M55155/30-9S](#) [M55155/30XI09](#) [M6-14RSX](#) [696683-1](#) [696861-1](#) [696999-1](#) [M86700006](#) [D18-110B-C](#) [D18-110B-M](#) [701-1936](#) [701-1955](#) [701-2003](#)