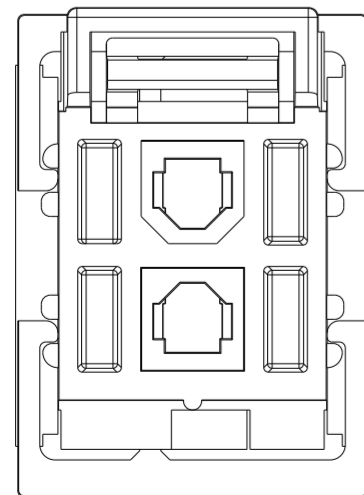
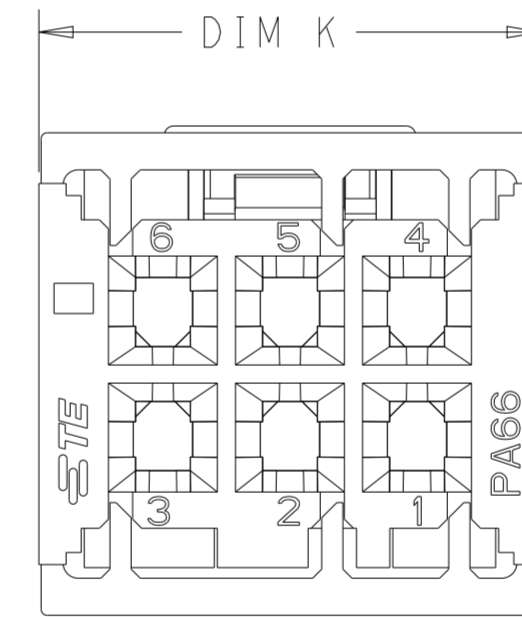
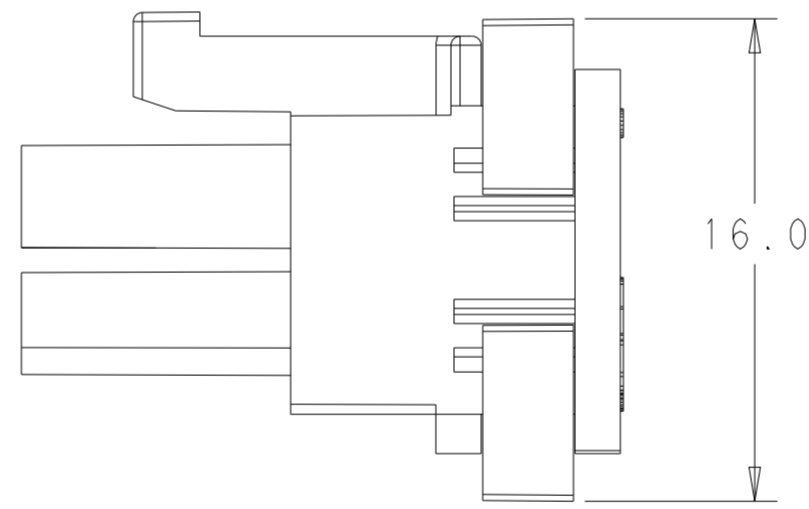
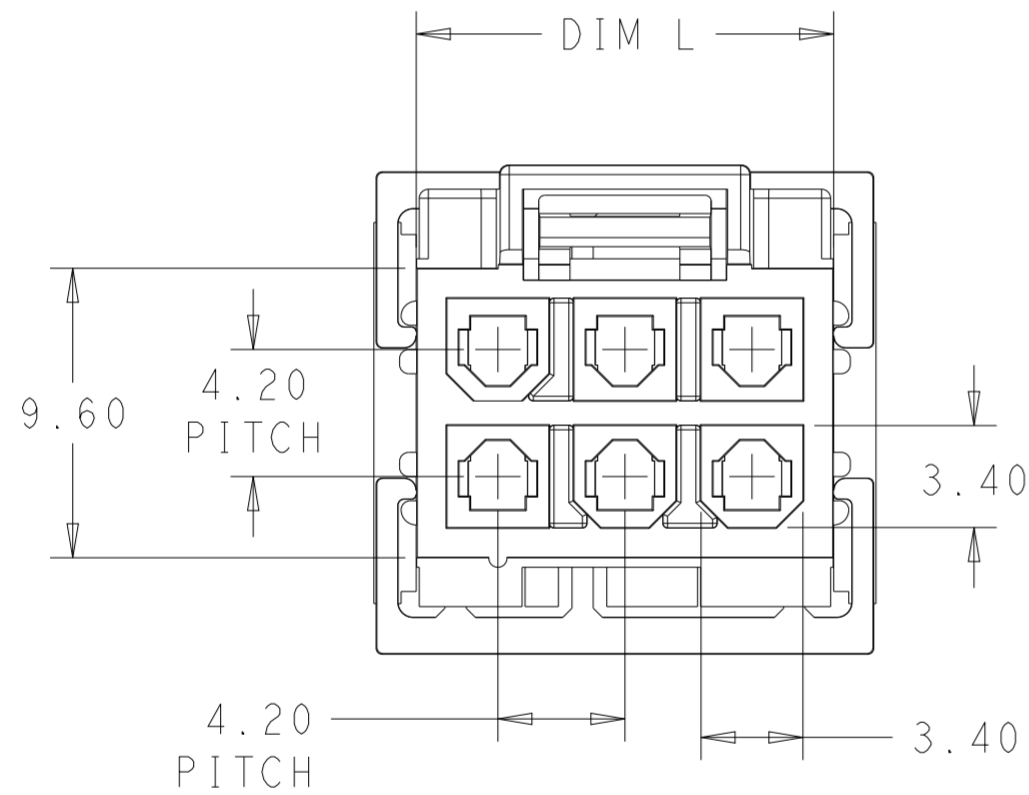
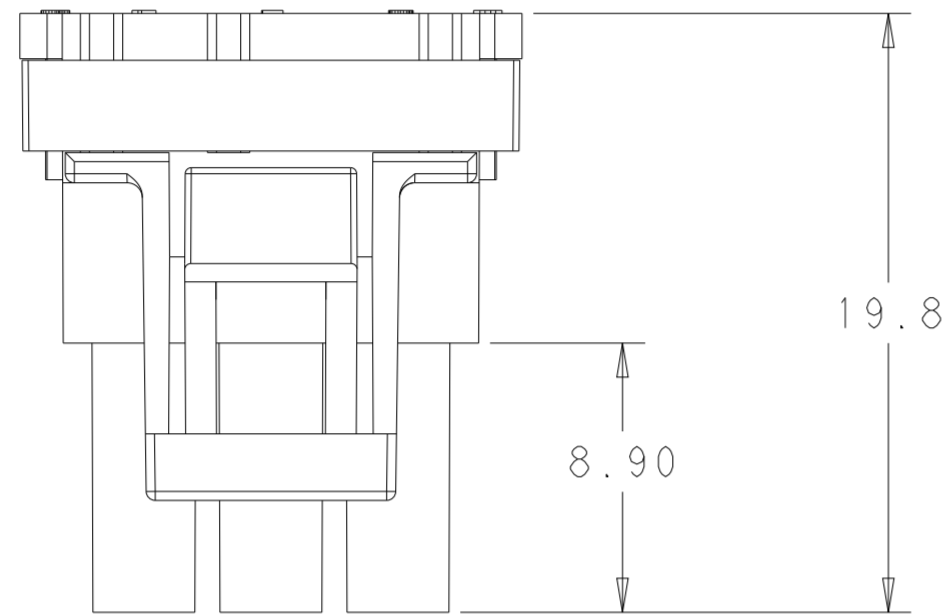


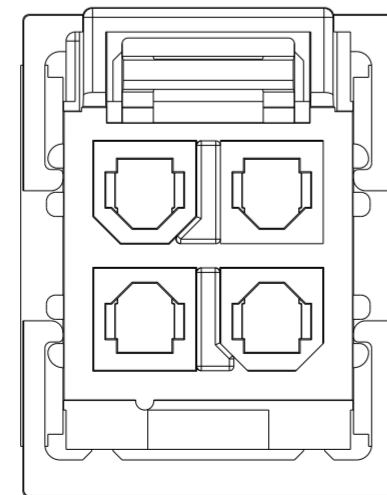
THIS DRAWING IS UNPUBLISHED. RELEASED FOR PUBLICATION 20  
 © COPYRIGHT 20 BY - ALL RIGHTS RESERVED.

LOC		DIST		REVISIONS			
P	LTR	DESCRIPTION	DATE	DWN	APVD		
AF	-	A	16JAN2023	WH	LC		

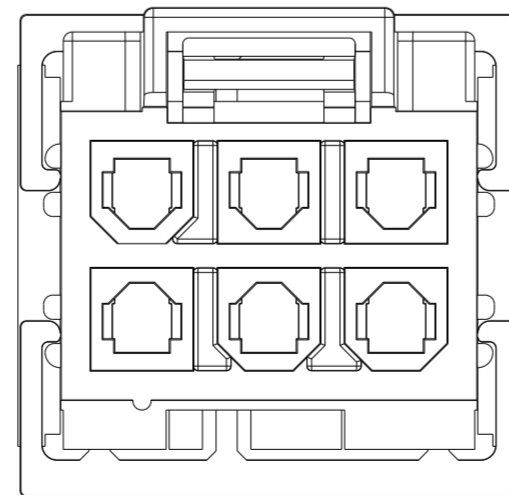
- 1 MATERIAL: PA66, UL94V-0, COLOR: NATURAL
- 2 DIMENSIONS SHOWN REPRESENT PRODUCT IN DRY, AS MOLDED.
- 3 THIS HOUSING ACCEPTS TERMINAL: 2238017-1/2238019-1.  
MATING RECEPTACLE: 2385533-\*
- 4 PACKAGING: LOOSE PIECE
- 5 PER IEC 60335-1 SECT. 30, GWEPT 750°C, NO FLAME or Te-Ti≤2S



2P



4P



6P

16.6	13.80	6	2385532-6
12.4	9.60	4	2385532-4
11.7	8.90	2	2385532-2
DIM K	DIM L	NO. OF POS	PART NO.

THIS DRAWING IS A CONTROLLED DOCUMENT.		DWN W. HUO 12OCT2022	<b>STE</b> TE Connectivity	
DIMENSIONS: mm		CHK L. CHEN 13OCT2022		
TOLERANCES UNLESS OTHERWISE SPECIFIED:		APVD D. ZHANG 14OCT2022	NAME RECEPTACLE HOUSING, GWT	
0 PLC ±-		PRODUCT SPEC 108-160744	INTEGRATED TPA	
1 PLC ±0.35		APPLICATION SPEC 114-160449	DUAL ROW, VAL-U-LOK	
2 PLC ±0.25		WEIGHT -	SIZE A2	CAGE CODE 00779
3 PLC ±-		CUSTOMER DRAWING	DRAWING NO. C-2385532	RESTRICTED TO -
4 PLC ±-		SCALE N/A	SHEET 1 OF 1	REV A
ANGLES ±3°				
FINISH				

## X-ON Electronics

Largest Supplier of Electrical and Electronic Components

*Click to view similar products for [Rectangular MIL Spec Connectors](#) category:*

*Click to view products by [TE Connectivity](#) manufacturer:*

Other Similar products are found below :

[891-011-15SA2-BSST](#) [M32139/03-B06ST](#) [65002-062](#) [M85049/28-1](#) [M85049/28-2](#) [77058-22-55PN](#) [86.030.0053.0](#) [GMCT26M0E100JC](#)  
[BACC65CAMA](#) [890-009-31SA2-BRT1T](#) [27963-20T12](#) [SIM2N40NC3](#) [SIM2S100A](#) [1604996-2](#) [SMD25PN90L-4055](#) [22628-10-6P-791](#)  
[GMCT66F0T0000](#) [CTD160E01F-6148](#) [CTJ-3D-12](#) [CTJ920E06N-513](#) [CTL-16-090](#) [CY4600-000](#) [CY4601-000](#) [38111-14-15SN](#)  
[TMN2N037PC2DM018S](#) [TMN2N051SC2DM018T](#) [MMD25-0071P1](#) [33526M11-08PC](#) [33526M11-08PE](#) [3355-5869-000](#) [DMC-M99-01AN](#)  
[ZPF000000000106310](#) [105979-31](#) [SIM2N40NC1](#) [SIM2N40NC2](#) [SIME2022PNR](#) [TMN2N009SC2DM018T](#) [ZPF000000000015295](#)  
[ZPF000000000134011](#) [ZPF000000000106308](#) [ZPF000000000102759](#) [CTG-20-08-513](#) [5634-201-03158](#) [5634-202-03758](#) [MMH43-0051J1](#)  
[MMH43-0091J1](#) [MMB41-0071K1](#) [EN4165A20-221BA](#) [EI-1470-2400](#) [507-002CH](#)