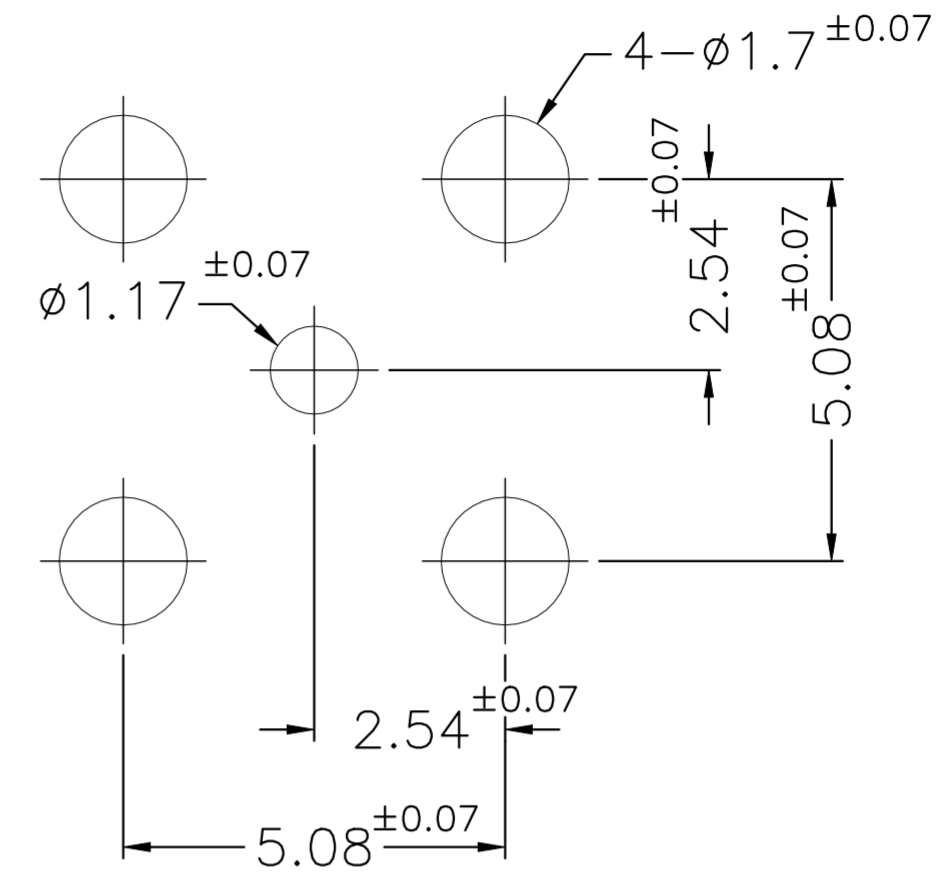
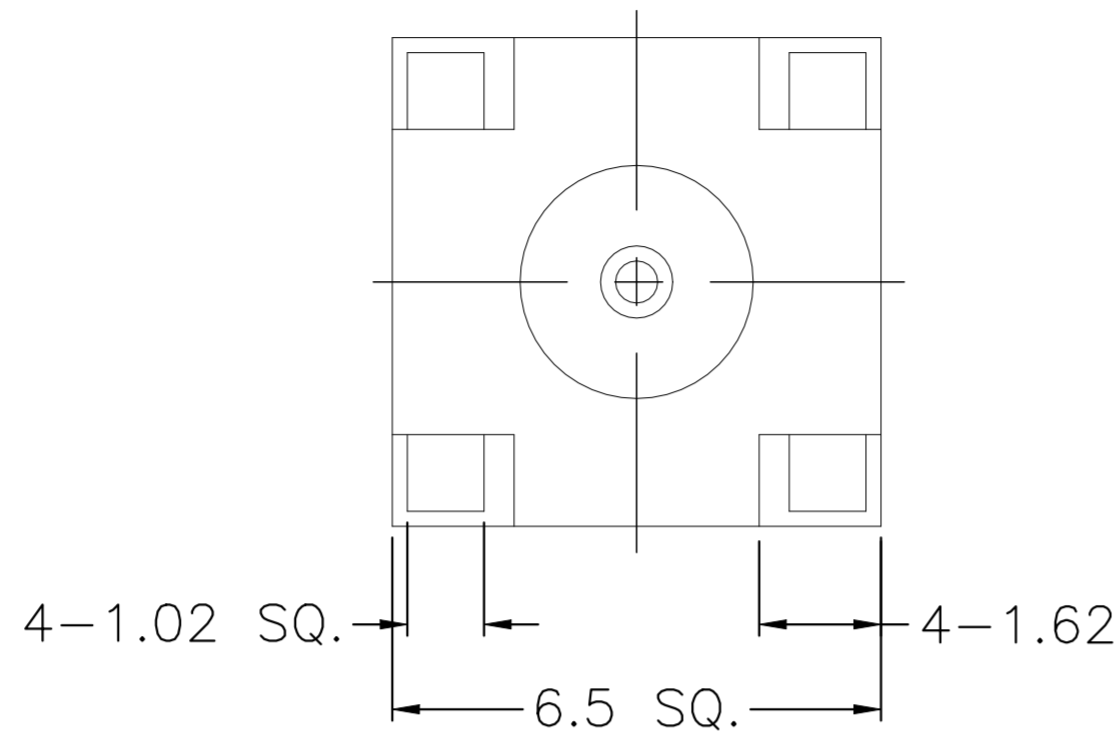
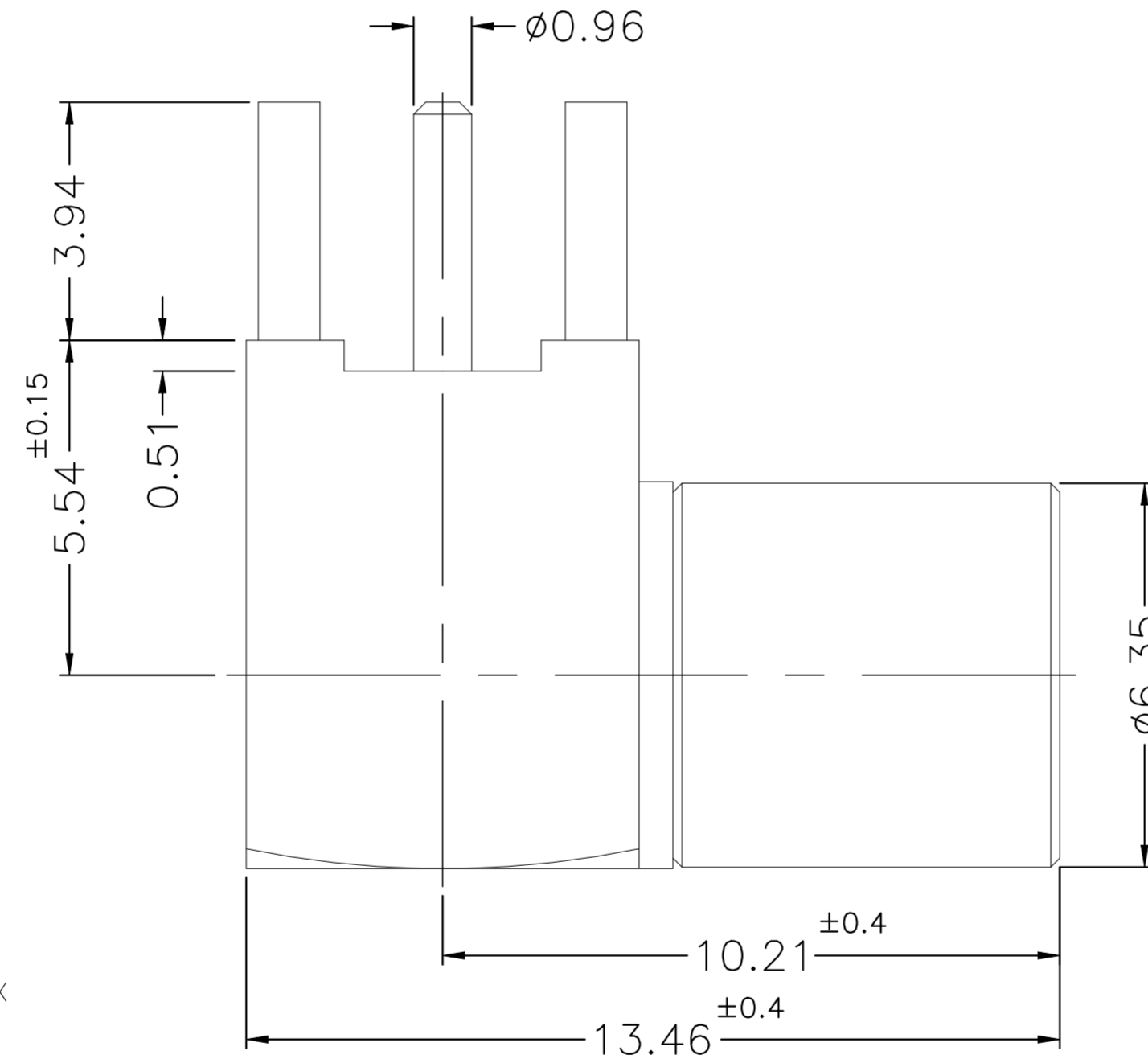


REVISIONS					
P	LTR	DESCRIPTION	DATE	DWN	APVD
	A	GTP(ECN-23-231223)	15SEP2023	ED	WH



PCB MOUNTING HOLE



NOTES:

- PACK IN ACCORDANCE WITH TE SPEC 107-3275;
- ALL DIMENSIONS ARE NOMINAL FOR REFERENCE ONLY UNLESS OTHERWISE STATED;
- ELECTRICAL CHARACTERISTICS :
 FREQUENCY RANGE : DC-6GHz
 NOMINAL IMPEDANCE : 50 OHMS
 INSULATION RESISTANCE : 5000 MOHMS
 WORKING VOLTAGE : 335 VRMS MAX
 DIELECTRIC WITHSTANDING VOLTAGE : 750 VOLTS MAX
 VSWR : 1.3(DC-6GHz)
 CONTACT RESISTANCE :
 CENTER CONTACT : 6 mOHMS MAX
 OUTER CONTACT : 2.5 mOHMS MAX;
- MECHANICAL CHARACTERISTICS :
 DURABILITY : 500 CYCLES
 ENGAGEMENT AND DISENGAGEMENT FORCE:
 ENGAGEMENT: 14 lbs max;
 DISENGAGEMENT: 14 lbs max;
- TEMPERATURE RANGE: -65°-+165°;
- RoHS: COMPLIANT.

QTY	DESCRIPTION	MATERIAL	DESCRIPTION	ITEM
1	NATURAL	PTFE	INSULATOR	7
1	NATURAL	BERYLLIUM COPPER	RETAINER RING	6
1	GOLD 30u"/NICKEL/COPPER	BERYLLIUM COPPER	CONTACT PIN	5
1	NATURAL	PTFE	INSULATOR	4
1	BRIGHT TIN 200u"/NICKEL/COPPER	BRASS	HOUSING	3
1	ELECTROLESS NICKEL 100u"	BRASS	BODY	2
1	NICKEL 100u"/COPPER	BRASS	SHELL	1
2466281-1	PLATING	MATERIAL	DESCRIPTION	ITEM

THIS DRAWING IS A CONTROLLED DOCUMENT.

DWN	ED	11SEP2023	 TE Connectivity	NAME SMB PLUG,PCB MOUNTING HOLE, RIGHT ANGLE,BULKHEAD,6GHZ
CHK	ED	11SEP2023		
APVD	WH	11SEP2023		
DIMENSIONS: mm			PRODUCT SPEC	SIZE
TOLERANCES UNLESS OTHERWISE SPECIFIED:			APPLICATION SPEC	CAGE CODE
0 PLC	± 0.3		WEIGHT	DRAWING NO
1 PLC	± 0.2		CUSTOMER DRAWING	RESTRICTED TO
2 PLC	± 0.1		SCALE	SHEET
3 PLC	± -		8:1	1 OF 1
4 PLC	± -			REV
ANGLES	± 5'			A
FINISH	-			

X-ON Electronics

Largest Supplier of Electrical and Electronic Components

Click to view similar products for [RF Connectors](#) / [Coaxial Connectors](#) category:

Click to view products by [TE Connectivity](#) manufacturer:

Other Similar products are found below :

[89674-0827](#) [6059674-1](#) [630059-000](#) [6501-1071-002](#) [6769](#) [7002-1541-010](#) [7002-1572-002](#) [7004-1512-000](#) [7009-1511-004](#) [7101-1541-010](#)
[7101-1571-002](#) [7105-1521-002](#) [7203-1571-003](#) [7209-1511-011](#) [7210-1511-040](#) [7242-1511-000](#) [7405-1521-005](#) [7405-1521-802](#)
[804S01D04M040](#) [8527](#) [8547](#) [FS11V](#) [877931](#) [8808-1511-001](#) [9049-9513-000](#) [9074-9513-000](#) [PL11C-026](#) [PL40-36](#) [9408-1113-000](#) [980-](#)
[8666-005](#) [11 SMA-50-2-6 / 111 NE](#) [11 SMA-50-3-6 / 111 NE](#) [1-201144-1](#) [120919](#) [R107003010W](#) [R112186000](#) [R113053000W](#) [R113082097](#)
[R113236000](#) [R114083000](#) [R114670000W](#) [R123415000W](#) [R124076320](#) [R124076450](#) [R124175123](#) [R125075000W](#) [R125075001](#)
[R125172000W](#) [R125415030](#) [R141007161](#)