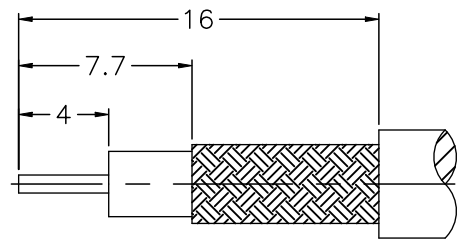
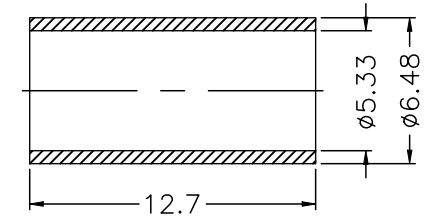
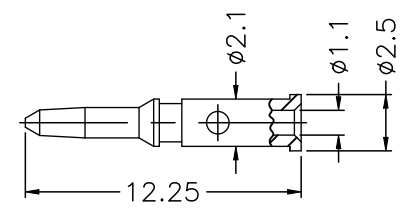
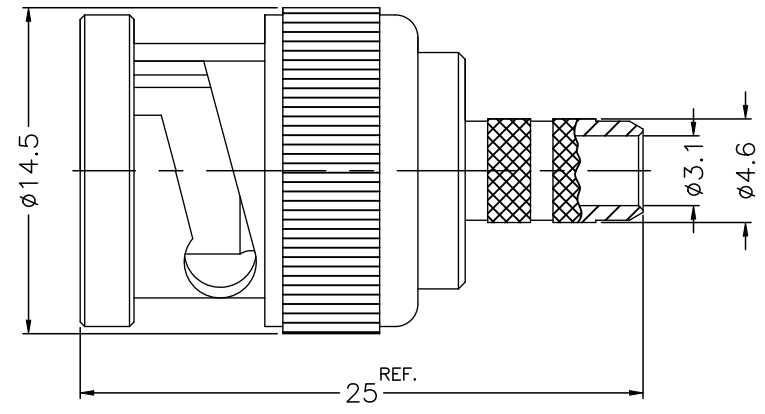


REVISIONS				
P	LTR	DESCRIPTION	DATE	DMN APD
A		GTP PER ECN-23-241416	29NOV2023	ED WH



RECOMMENDED CABLE STRIPPING DIM'S

- NOTES:**
- PACK IN ACCORDANCE WITH TE SPEC 107-3275;
 - ALL DIMENSIONS ARE NOMINAL FOR REFERENCE ONLY UNLESS OTHERWISE STATED;
 - ELECTRICAL CHARACTERISTICS :
 FREQUENCY RANGE : DC-4GHz
 NOMINAL IMPEDANCE : 50 OHMS
 INSULATION RESISTANCE : 5000 MOHMS
 WORKING VOLTAGE : 335 VRMS MAX
 DIELECTRIC WITHSTANDING VOLTAGE : 750 VOLTS MAX
 VSWR : 1.35 MAX(DC-4GHz)
 CONTACT RESISTANCE :
 CENTER CONTACT : 3 mOHMS MAX
 OUTER CONTACT : 2 mOHMS MAX;
 - MECHANICAL CHARACTERISTICS :
 DURABILITY : 500 CYCLES;
 CABLE RETENTION FORCE : 20 LBS MIN;
 - TEMPERATURE RANGE: -40°-+85°;
 - RoHS: COMPLIANT;
 - NICKEL PLATING 100u" THICK OVER COPPER PLATING;
 - GOLD PLATING 30u" NICKEL PLATING OVER COPPER PLATING;
 - CRIMPED FERRULE,HEX CRIMP SIZE IS .213";
 - CRIMPED CONTACT PIN, HEX CRIMP SIZE IS .068".

QTY	NOTE	MATERIAL	DESCRIPTION	ITEM	
1	NOTE 7	COPPER	FERRULE	9	
1	NOTE 8	BRASS	CONTACT PIN	8	
1	NOTE 7	BRASS	WASHER	7	
1	NOTE 7	SKS	SPRING	6	
1	NOTE 7	BRASS	RETAINER RING	5	
1	RED	SILICONE	GASKET	4	
1	NATURAL	POM	INSULATOR	3	
1	NOTE 7	BRASS	BODY	2	
1	NOTE 7	ZINC DIECAST	SHELL	1	
2476195-1		PLATING	MATERIAL	DESCRIPTION	ITEM

THIS DRAWING IS A CONTROLLED DOCUMENT.

DMN	ED	23OCT2023
CHR	ED	23OCT2023
APD	WH	23OCT2023

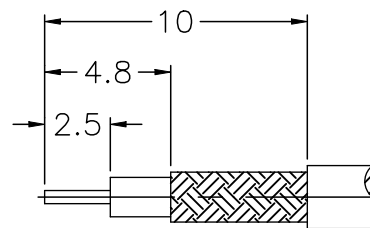
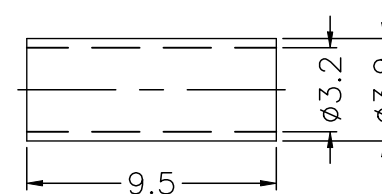
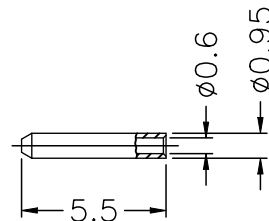
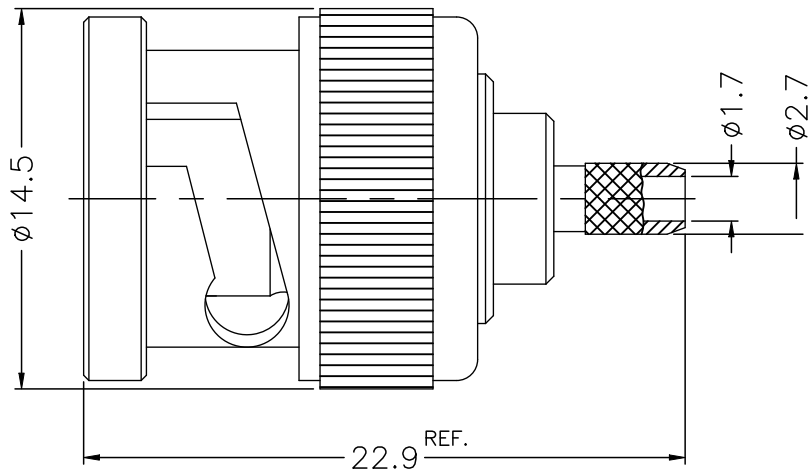
NAME: **STE** TE Connectivity Ltd.

PRODUCT SPEC: BNC CRIMP PLUG, MATCH WITH RG58,LMR195,4G

SIZE	CAGE CODE	DRAWING NO	RESTRICTED TO
A2	00779	C=2476195	-

CUSTOMER DRAWING SCALE: 8:1 SHEET: 1 of 2 REV: A

REVISIONS					
P	LTR	DESCRIPTION	DATE	DWN	APD
-	-	SEE SHEET 1	-	-	-



RECOMMENDED CABLE STRIPPING DIM'S

NOTES:

- PACK IN ACCORDANCE WITH TE SPEC 107-3275;
- ALL DIMENSIONS ARE NOMINAL FOR REFERENCE ONLY UNLESS OTHERWISE STATED;
- ELECTRICAL CHARACTERISTICS :
 FREQUENCY RANGE : DC-4GHz
 NOMINAL IMPEDANCE : 50 OHMS
 INSULATION RESISTANCE : 5000 MOHMS
 WORKING VOLTAGE : 335 VRMS MAX
 DIELECTRIC WITHSTANDING VOLTAGE : 750 VOLTS MAX
 VSWR : 1.20 MAX(DC-4GHz)
 CONTACT RESISTANCE :
 CENTER CONTACT : 3 mOHMS MAX
 OUTER CONTACT : 2 mOHMS MAX;
- MECHANICAL CHARACTERISTICS :
 DURABILITY : 500 CYCLES;
 CABLE RETENTION FORCE : 10 LBS MIN;
- TEMPERATURE RANGE: -40°-+85°;
- RoHS: COMPLIANT;
- NICKEL PLATING 100u" THICK OVER COPPER PLATING;
- GOLD PLATING 30u" NICKEL PLATING OVER COPPER PLATING;
- GOLD PLATING 3u" NICKEL PLATING OVER COPPER PLATING;
- CRIMPED FERRULE, HEX CRIMP SIZE IS .128";
- CRIMPED CONTACT PIN, CRIMP SIZE IS 0.7mm.

QTY	UNIT	DESCRIPTION	MATERIAL	DESCRIPTION	ITEM
1	1	NOTE 7	COPPER	FERRULE	10
1		1	BRASS	CONTACT PIN	9
1	1	NOTE 7	BRASS	WASHER	8
1	1	NOTE 7	SK5	SPRING	7
1	1	NOTE 7	BRASS	RETAINER RING	6
1	1	RED	SILICONE	GASKET	5
1		1	PHOSPHOR BRONZE	CONTACT PIN	4
1	1	NATURAL	POM	INSULATOR	3
1	1	NOTE 7	BRASS	BODY	2
1	1	NOTE 7	ZINC DIECAST	SHELL	1

QUANTITY PER ASSY		PARTS LIST			
1	1	23OCT2023	ED	23OCT2023	ED
1	1	23OCT2023	GR	23OCT2023	GR
1	1	23OCT2023	WH	23OCT2023	WH

THIS DRAWING IS A CONTROLLED DOCUMENT.

STE TE Connectivity Ltd.

BNC CRIMP PLUG,
MATCH WITH RG174,RG188,RG316,4G

DIM	23OCT2023	ED	23OCT2023	ED	23OCT2023
GR	23OCT2023	GR	23OCT2023	GR	23OCT2023
WH	23OCT2023	WH	23OCT2023	WH	23OCT2023
APD	23OCT2023	APD	23OCT2023	APD	23OCT2023
PRODUCT SPEC	-	PRODUCT SPEC	-	PRODUCT SPEC	-
APPLICATION SPEC	-	APPLICATION SPEC	-	APPLICATION SPEC	-
SIZE	A2	CAGE CODE	00779	DRAWING NO	C=2476195
WEIGHT	-	RESTRICTED TO	-	SCALE	8:1
CUSTOMER DRAWING	-	SHEET	2 of 2	REV	A

X-ON Electronics

Largest Supplier of Electrical and Electronic Components

Click to view similar products for [RF Connectors](#) / [Coaxial Connectors](#) category:

Click to view products by [TE Connectivity](#) manufacturer:

Other Similar products are found below :

[89674-0827](#) [6059674-1](#) [630059-000](#) [6501-1071-002](#) [6769](#) [7002-1541-010](#) [7002-1572-002](#) [7004-1512-000](#) [7009-1511-004](#) [7101-1541-010](#)
[7101-1571-002](#) [7105-1521-002](#) [7203-1571-003](#) [7209-1511-011](#) [7210-1511-040](#) [7242-1511-000](#) [7405-1521-005](#) [7405-1521-802](#)
[804S01D04M040](#) [8527](#) [8547](#) [FS11V](#) [877931](#) [8808-1511-001](#) [9049-9513-000](#) [9074-9513-000](#) [PL11C-026](#) [PL40-36](#) [9408-1113-000](#) [980-](#)
[8666-005](#) [11 SMA-50-2-6 / 111 NE](#) [11 SMA-50-3-6 / 111 NE](#) [1-201144-1](#) [120919](#) [R107003010W](#) [R112186000](#) [R113053000W](#) [R113082097](#)
[R113236000](#) [R114083000](#) [R114670000W](#) [R123415000W](#) [R124076320](#) [R124076450](#) [R124175123](#) [R125075000W](#) [R125075001](#)
[R125172000W](#) [R125415030](#) [R141007161](#)