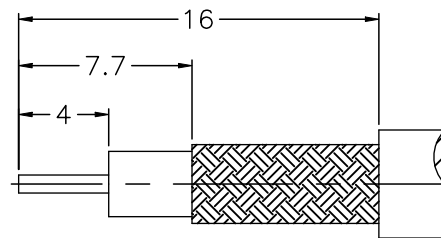
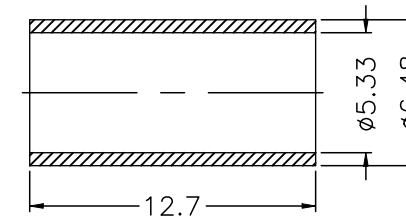
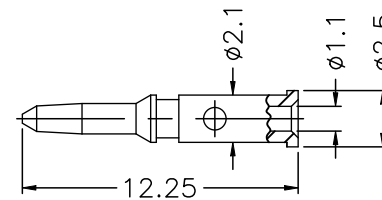
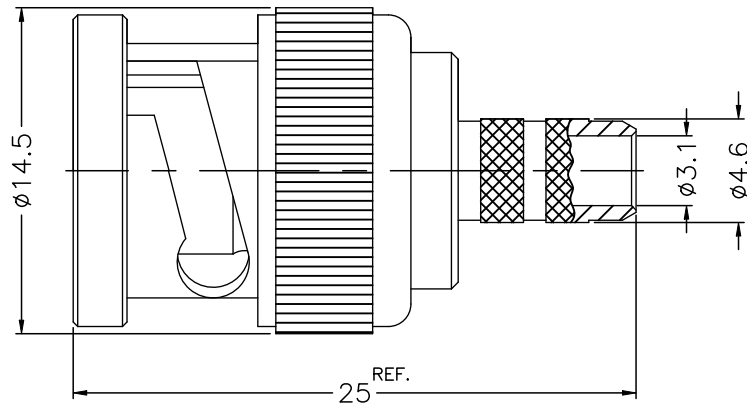


REVISIONS				
P	LTR	DESCRIPTION	DATE	DMN APD
A		GTP PER ECN-23-241416	29NOV2023	ED WH



RECOMMENDED CABLE STRIPPING DIM'S

NOTES:

- PACK IN ACCORDANCE WITH TE SPEC 107-3275;
- ALL DIMENSIONS ARE NOMINAL FOR REFERENCE ONLY UNLESS OTHERWISE STATED;
- ELECTRICAL CHARACTERISTICS :  
 FREQUENCY RANGE : DC-4GHz  
 NOMINAL IMPEDANCE : 50 OHMS  
 INSULATION RESISTANCE : 5000 MOHMS  
 WORKING VOLTAGE : 335 VRMS MAX  
 DIELECTRIC WITHSTANDING VOLTAGE : 750 VOLTS MAX  
 VSWR : 1.35 MAX(DC-4GHz)  
 CONTACT RESISTANCE :  
   CENTER CONTACT : 3 mOHMS MAX  
   OUTER CONTACT : 2 mOHMS MAX;
- MECHANICAL CHARACTERISTICS :  
 DURABILITY : 500 CYCLES;  
 CABLE RETENTION FORCE : 20 LBS MIN;
- TEMPERATURE RANGE: -40°-+85°;
- RoHS: COMPLIANT;
- NICKEL PLATING 100u" THICK OVER COPPER PLATING;
- GOLD PLATING 30u" NICKEL PLATING OVER COPPER PLATING;
- CRIMPED FERRULE,HEX CRIMP SIZE IS .213";
- CRIMPED CONTACT PIN, HEX CRIMP SIZE IS .068".

QTY	NOTE	MATERIAL	DESCRIPTION	ITEM	
1	NOTE 7	COPPER	FERRULE	9	
1	NOTE 8	BRASS	CONTACT PIN	8	
1	NOTE 7	BRASS	WASHER	7	
1	NOTE 7	SKS	SPRING	6	
1	NOTE 7	BRASS	RETAINER RING	5	
1	RED	SILICONE	GASKET	4	
1	NATURAL	POM	INSULATOR	3	
1	NOTE 7	BRASS	BODY	2	
1	NOTE 7	ZINC DIECAST	SHELL	1	
2476195-1		PLATING	MATERIAL	DESCRIPTION	ITEM

THIS DRAWING IS A CONTROLLED DOCUMENT.

DMN	ED	23OCT2023
CHR	ED	23OCT2023
APD	WH	23OCT2023

TE Connectivity Ltd.

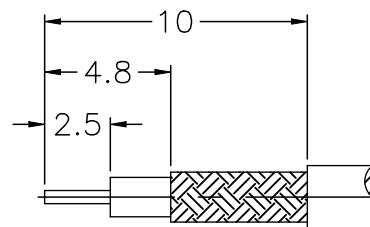
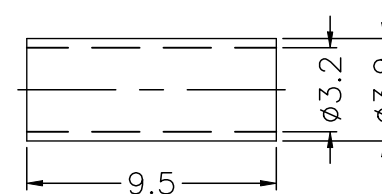
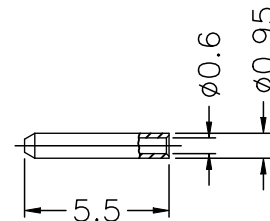
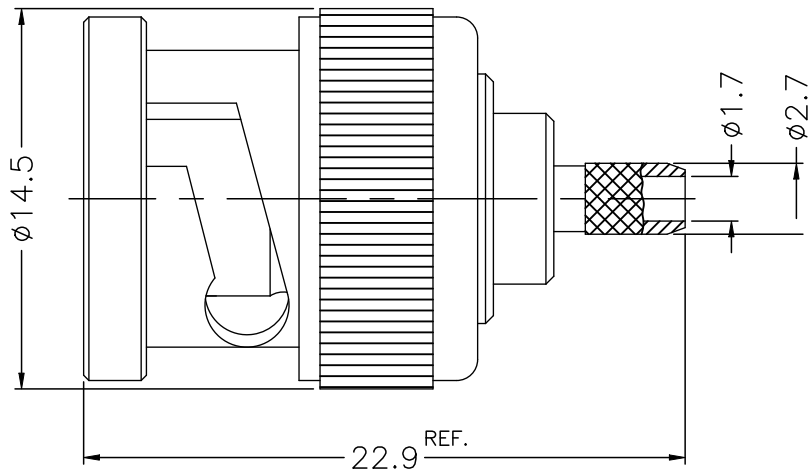
BNC CRIMP PLUG,  
MATCH WITH RG58,LMR195,4G

SIZE	CAGE CODE	DRAWING NO	RESTRICTED TO
A2	00779	C=2476195	-

CUSTOMER DRAWING

SCALE	SHEET	REV
8:1	1 of 2	A

REVISIONS					
P	LTR	DESCRIPTION	DATE	DWN	APD
-	-	SEE SHEET 1	-	-	-



RECOMMENDED  
CABLE STRIPPING DIM'S

**NOTES:**

- PACK IN ACCORDANCE WITH TE SPEC 107-3275;
- ALL DIMENSIONS ARE NOMINAL FOR REFERENCE ONLY UNLESS OTHERWISE STATED;
- ELECTRICAL CHARACTERISTICS :  
 FREQUENCY RANGE : DC-4GHz  
 NOMINAL IMPEDANCE : 50 OHMS  
 INSULATION RESISTANCE : 5000 MOHMS  
 WORKING VOLTAGE : 335 VRMS MAX  
 DIELECTRIC WITHSTANDING VOLTAGE : 750 VOLTS MAX  
 VSWR : 1.20 MAX(DC-4GHz)  
 CONTACT RESISTANCE :  
 CENTER CONTACT : 3 mOHMS MAX  
 OUTER CONTACT : 2 mOHMS MAX;
- MECHANICAL CHARACTERISTICS :  
 DURABILITY : 500 CYCLES;  
 CABLE RETENTION FORCE : 10 LBS MIN;
- TEMPERATURE RANGE: -40°-+85°;
- RoHS: COMPLIANT;
- NICKEL PLATING 100u" THICK OVER COPPER PLATING;
- GOLD PLATING 30u" NICKEL PLATING OVER COPPER PLATING;
- GOLD PLATING 3u" NICKEL PLATING OVER COPPER PLATING;
- CRIMPED FERRULE, HEX CRIMP SIZE IS .128";
- CRIMPED CONTACT PIN, CRIMP SIZE IS 0.7mm.

QTY	UNIT	DESCRIPTION	MATERIAL	DESCRIPTION	ITEM
1	1	NOTE 7	COPPER	FERRULE	10
1		NOTE 7	BRASS	CONTACT PIN	9
1	1	NOTE 7	BRASS	WASHER	8
1	1	NOTE 7	SK5	SPRING	7
1	1	NOTE 7	BRASS	RETAINER RING	6
1	1	RED	SILICONE	GASKET	5
1		PHOSPHOR BRONZE	CONTACT PIN		4
1	1	NATURAL	POM	INSULATOR	3
1	1	NOTE 7	BRASS	BODY	2
1	1	NOTE 7	ZINC DIECAST	SHELL	1
2476195-1	2476195-2	PLATING	MATERIAL	DESCRIPTION	ITEM

QUANTITY PER ASSY PARTS LIST

THIS DRAWING IS A CONTROLLED DOCUMENT.		DRW ED CHR FD	23OCT2023	TE Connectivity Ltd.	
DIMENSIONS: mm		APD WH	23OCT2023	NAME	
		PRODUCT SPEC	-	BNC CRIMP PLUG, MATCH WITH RG174,RG188,RG316,4G	
0 PLC ± 0.3 1 PLC ± 0.2 2 PLC ± 0.1 3 PLC ± 0.05 4 PLC ± - ± 0°		APPLICATION SPEC	-	SIZE	A2
MATERIAL SEE TABLE		FINISH	-	CAGE CODE	00779
		WEIGHT	-	DRAWING NO	C=2476195
		CUSTOMER DRAWING	-	RESTRICTED TO	-
		SCALE	8:1	SHEET	2 of 2
		REV	A		

## X-ON Electronics

Largest Supplier of Electrical and Electronic Components

*Click to view similar products for [RF Connectors](#) / [Coaxial Connectors](#) category:*

*Click to view products by [TE Connectivity](#) manufacturer:*

Other Similar products are found below :

[89674-0827](#) [6059674-1](#) [630059-000](#) [6501-1071-002](#) [6769](#) [7002-1541-010](#) [7002-1572-002](#) [7004-1512-000](#) [7009-1511-004](#) [7101-1541-010](#)  
[7101-1571-002](#) [7105-1521-002](#) [7203-1571-003](#) [7209-1511-011](#) [7210-1511-040](#) [7242-1511-000](#) [7405-1521-005](#) [7405-1521-802](#)  
[804S01D04M040](#) [8527](#) [8547](#) [FS11V](#) [877931](#) [8808-1511-001](#) [9049-9513-000](#) [9074-9513-000](#) [PL11C-026](#) [PL40-36](#) [9408-1113-000](#) [980-](#)  
[8666-005](#) [11 SMA-50-2-6 / 111 NE](#) [11 SMA-50-3-6 / 111 NE](#) [1-201144-1](#) [120919](#) [R107003010W](#) [R112186000](#) [R113053000W](#) [R113082097](#)  
[R113236000](#) [R114083000](#) [R114670000W](#) [R123415000W](#) [R124076320](#) [R124076450](#) [R124175123](#) [R125075000W](#) [R125075001](#)  
[R125172000W](#) [R125415030](#) [R141007161](#)