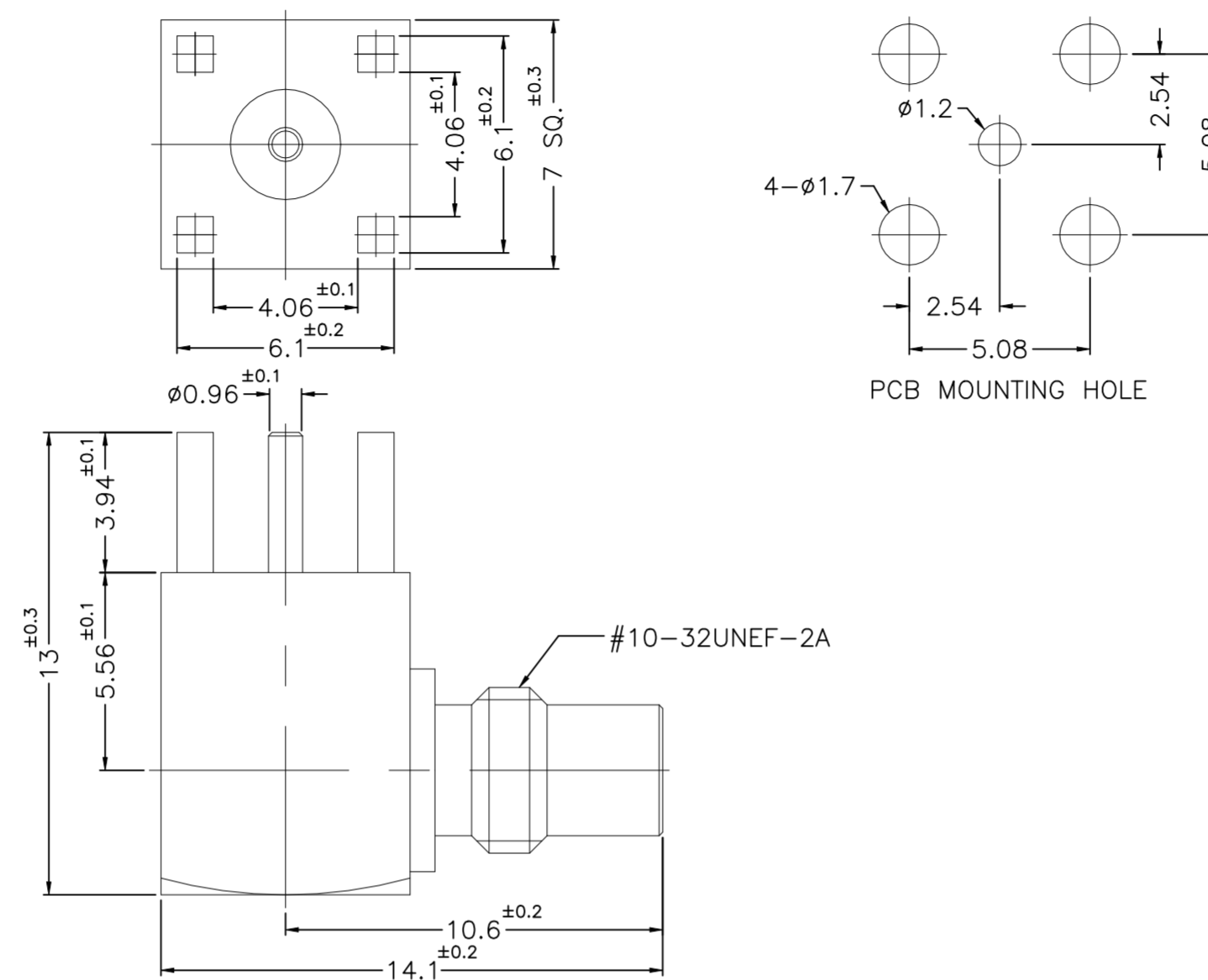


REVISIONS					
P	LTR	DESCRIPTION	DATE	DWN	APVD
A		ECN-24-261719 (GTP)	19APR	SS	WH



SPECIFICATIONS:

1. IMPEDANCE: 50Ω
2. FREQUENCY RANGE: (DC-6 GHz), (6-10 GHz)
3. VSWR/RL: 1.2(DC-6GHz)/20.83dB min., 1.3(6-10GHz)/ 17.7dB min.
4. CONTACT RESISTANCE:
CENTER: 6 milliohms max.
OUTER: 2.5 milliohms max.
5. TEMPERATURE RANGE: -65°C TO +165°C
6. DURABILITY: 500 cycles min.
7. ENGAGEMENT AND DISENGAGEMENT FORCE:
ENGAGEMENT: 0.3 N-m. max.
DISENGAGEMENT: 0.3 N-m. max.

FINISH (PLATING THICKNESS IN MICRO-INCHES)

- ▲ THIN GOLD OVER NICKEL PL. 50 MIN. THICK OVER COPPER PL. 50 MIN. THICK
- ▲ GOLD PL. 30 MIN. THICK OVER NICKEL PL. 50 MIN. THICK OVER COPPER PL. 50 MIN. THICK

QTY	DESCRIPTION	MATERIAL	ITEM
1	CONTACT PIN	BRASS	4
2	INSULATOR	PTFE	3
1	BODY	BRASS	2
1	HOUSING	BRASS	1
2477168-1	PLATING	MATERIAL	DESCRIPTION

THIS DRAWING IS A CONTROLLED DOCUMENT.		DWN 11MAR2024 SIDDHARTH SINGH														
		CHK 11MAR2024 ERIC DAI														
DIMENSIONS: mm		APVD 11MAR2024 WENKE HE	NAME SMC Jack RA PCB Thru Hole Gold 10 Ghz													
TOLERANCES UNLESS OTHERWISE SPECIFIED:		PRODUCT SPEC 108-161209	SIZE CAGE CODE DRAWING NO RESTRICTED TO													
<table border="1"> <tr><td>0 PLC</td><td>± 0.3</td></tr> <tr><td>1 PLC</td><td>± 0.2</td></tr> <tr><td>2 PLC</td><td>± 0.1</td></tr> <tr><td>3 PLC</td><td>± -</td></tr> <tr><td>4 PLC</td><td>± -</td></tr> <tr><td>ANGLES</td><td>± 5</td></tr> </table>		0 PLC	± 0.3	1 PLC	± 0.2	2 PLC	± 0.1	3 PLC	± -	4 PLC	± -	ANGLES	± 5	APPLICATION SPEC	SCALE 1:1 SHEET 1 OF 1 REV A	
0 PLC	± 0.3															
1 PLC	± 0.2															
2 PLC	± 0.1															
3 PLC	± -															
4 PLC	± -															
ANGLES	± 5															
MATERIAL FINISH		WEIGHT -	CUSTOMER DRAWING													

X-ON Electronics

Largest Supplier of Electrical and Electronic Components

Click to view similar products for [RF Connectors](#) / [Coaxial Connectors](#) category:

Click to view products by [TE Connectivity](#) manufacturer:

Other Similar products are found below :

[89674-0827](#) [6059674-1](#) [630059-000](#) [6501-1071-002](#) [6769](#) [7002-1541-010](#) [7002-1572-002](#) [7004-1512-000](#) [7009-1511-004](#) [7101-1541-010](#)
[7101-1571-002](#) [7105-1521-002](#) [7203-1571-003](#) [7209-1511-011](#) [7210-1511-040](#) [7242-1511-000](#) [7405-1521-005](#) [7405-1521-802](#)
[804S01D04M040](#) [8527](#) [8547](#) [FS11V](#) [877931](#) [8808-1511-001](#) [9049-9513-000](#) [9074-9513-000](#) [PL11C-026](#) [PL40-36](#) [9408-1113-000](#) [980-](#)
[8666-005](#) [11 SMA-50-2-6 / 111 NE](#) [11 SMA-50-3-6 / 111 NE](#) [1-201144-1](#) [120919](#) [R107003010W](#) [R112186000](#) [R113053000W](#) [R113082097](#)
[R113236000](#) [R114083000](#) [R114670000W](#) [R123415000W](#) [R124076320](#) [R124076450](#) [R124175123](#) [R125075000W](#) [R125075001](#)
[R125172000W](#) [R125415030](#) [R141007161](#)