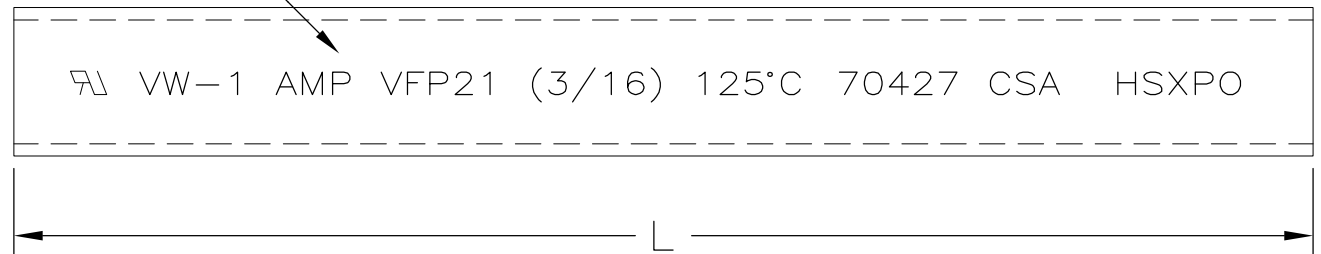
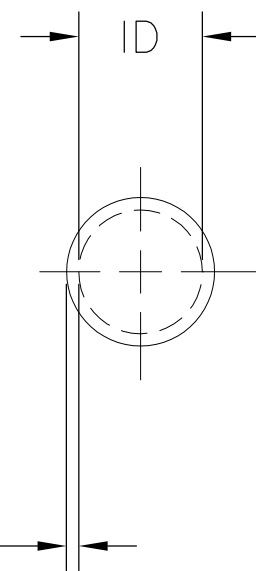




4.76 [.187] MINIMUM EXPANDED
2.38 [.093] MAXIMUM RECOVERED



0.51 [.020] NOMINAL WALL THICKNESS FULLY RECOVERED



REVISIONS		
LTR	DESCRIPTION	DATE
W	REVISED PER DCR NO R060225	10/13/2006
W1	REVISED PER ECO-09-021510	12SEP09

	OBSOLETE	YES	75.0 ± .05 [2.95 ± .002]	2-603325-6
		NO	76.2 ± _{0.0} ^{0.3} m [250 ± ₀ ¹ ft]	2-603325-5
		YES	76.2 ± _{0.0} ^{0.3} m [250 ± ₀ ¹ ft]	2-603325-4
		NO	22.4 ± 1.6 [.88 ± .06]	2-603325-0
	OBSOLETE	YES	152.4 ± _{0.0} ^{0.3} m [500 ± ₀ ¹ ft]	1-603325-4
		NO	1219.2 ± _{00.0} ^{25.4} [48.00 ± _{0.00} ^{1.00}]	1-603325-1
		YES	304.8 ± 6.3 [12.00 ± .25]	603325-4
		YES	12.7 ± _{0.0} ^{1.6} [.50 ± .06]	603325-3
		YES	1219.2 ± _{00.0} ^{25.4} [48.00 ± _{0.00} ^{1.00}]	603325-1
		MARKING	LENGTH L	PART NUMBER

- ALL VFP21 PRODUCTS ARE MARKED USING WHITE INK ON SURFACE INDICATED
- TUBING FP21 IS UNMARKED AND COMPLIES TO AMS-DTL-23053/5, CLASS 1.
- WEIGHT PER LINEAR FOOT/304.8 mm:
1.44 g/.003 lbs.
- MATERIAL: BLACK POLYOLEFIN

OBSOLETE PARTS: OBSOLETE CIS STREAMLINING PER D.RENAUD/D.SINISI

SPECIFICATION CONTROL DRAWING

UNLESS OTHERWISE SPECIFIED DIMENSIONS ARE IN mm. INCH DIMENSIONS ARE IN BRACKETS. DECIMALS .XX ± .01 [.0004 in] .X ± .1 [.004 in] ANGLES .X ± 0.5 DEG	DRAWN UNGUYEN	DATE 10/13/2006	Tyco Electronics Corporation 300 Constitution Drive Menlo Park, CA, USA 94025
	RPN	CAD NAME R060225	
	THIRD ANGLE PROJECTION	SIZE B	CODE IDENT. NO. 06090

DO NOT SCALE THIS DRAWING SHEET 1 OF 1

X-ON Electronics

Largest Supplier of Electrical and Electronic Components

Click to view similar products for [Heat Shrink Tubing and Sleeves](#) category:

Click to view products by [TE Connectivity](#) manufacturer:

Other Similar products are found below :

[5685710001](#) [CR9960-000](#) [5734012004](#) [607381P039](#) [611112-000](#) [6284592002](#) [CX4711-000](#) [CZ1420-000](#) [D-306-38](#) [770-006S302](#) [770-010Y106W1](#) [770-018S103](#) [770-018S202W1](#) [770-018S205W1](#) [770-020S704W1](#) [770-020S705](#) [MFP-3/64"-Clear](#) [790-3012](#) [MHHT-4-15K2-G-104](#) [8003012003](#) [MIL-LT-1-1/2-4-SP](#) [MIL-LT-1-1/2-9-STK](#) [MIL-LT-1/2-2-STK](#) [MIL-LT-3-0-SP](#) [MIL-LT-3/32-0-SP](#) [MIL-LT-3/32-6-SP](#) [MIL-LT-3/4-4-STK](#) [MIL-LT-3/4-6-SP](#) [839602-000](#) [8423-6](#) [FP301-116-48"-Clear](#) [FP301-12-6"-Clear](#) [FP301-1/4-48"-White-Hdr](#) [FP301-18-48"-Black-Hdr](#) [FP301-1/8-6"-Black](#) [FP301-18-6"-Black-Bulk](#) [FP301-316-48"-Blue-Hdr](#) [912229N002](#) [R280637030](#) [HDCW-5515-1000](#) [HDT-0300-48A-BLACK](#) [HDT-0400-48A-Black](#) [HDT-0800-48A-RED](#) [HDT1100-48A-BLK](#) [HDT1500-48A-BLK](#) [HDT-2000-48A-Black](#) [RHW-70/20-1200/ADH-0](#) [DWP-125-0.450-4-55MM-CS879](#) [156082-000](#) [MT5500-3/8-X-SP](#)