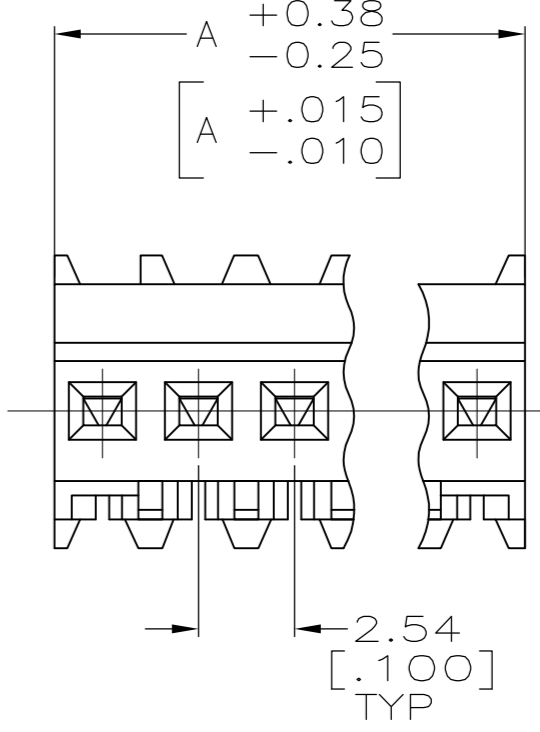
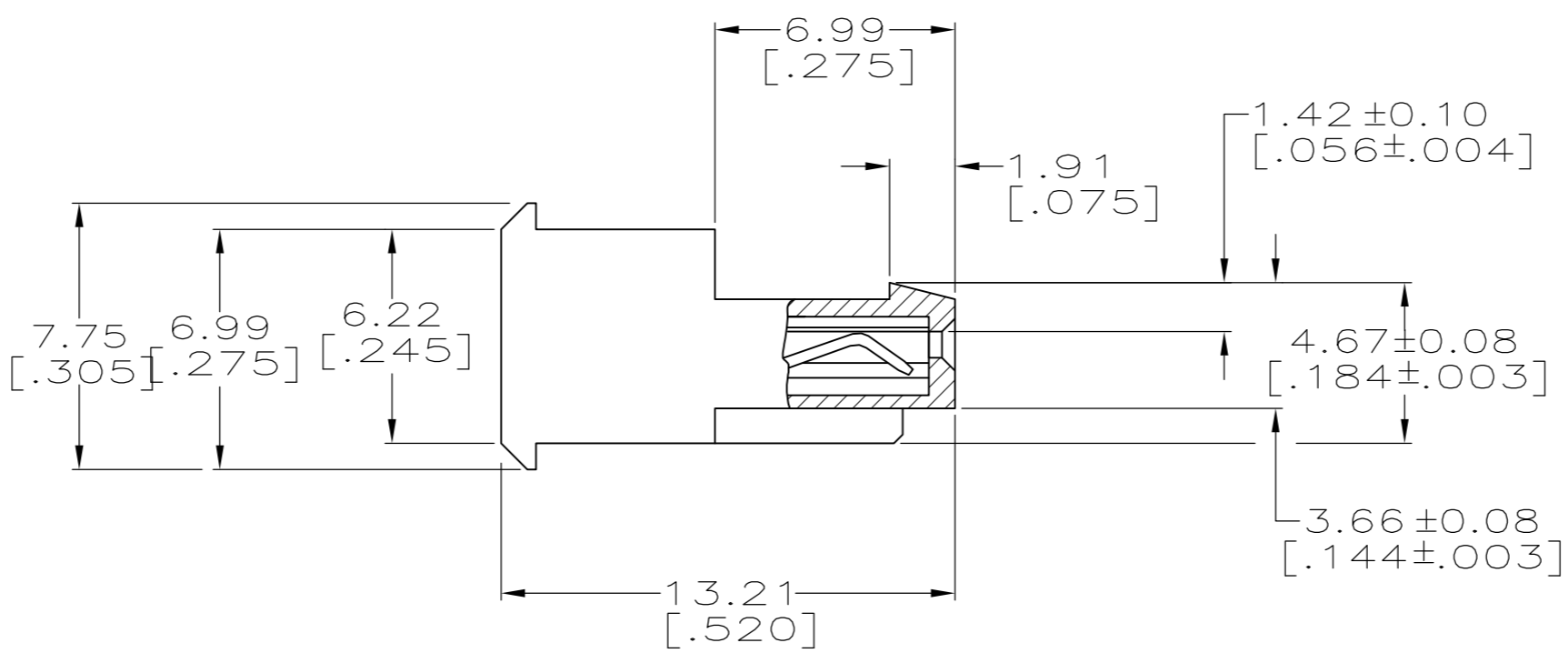
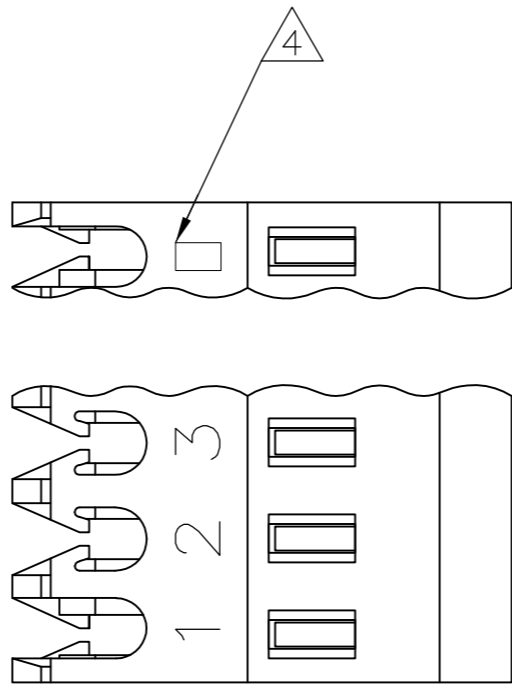


THIS DRAWING IS UNPUBLISHED. RELEASED FOR PUBLICATION
 © COPYRIGHT - By - ALL RIGHTS RESERVED.

LOC	DIST	REVISIONS			
P	LTR	DESCRIPTION	DATE	DWN	APVD
CM	00	V3	REVISED PER ECR-17-018425	16APR2018	BDA SG

YES	DIM A	NO. OF CIRCUITS	PART NO.
YES	71.12[2.800]	28	5-640621-8
YES	68.58[2.700]	27	5-640621-7
YES	66.04[2.600]	26	5-640621-6
YES	63.50[2.500]	25	5-640621-5
YES	60.96[2.400]	24	5-640621-4
YES	58.42[2.300]	23	5-640621-3
YES	55.88[2.200]	22	5-640621-2
YES	53.34[2.100]	21	5-640621-1
YES	50.80[2.000]	20	5-640621-0
YES	48.26[1.900]	19	4-640621-9
YES	45.72[1.800]	18	4-640621-8
YES	43.18[1.700]	17	4-640621-7
YES	40.64[1.600]	16	4-640621-6
YES	38.10[1.500]	15	4-640621-5
YES	35.56[1.400]	14	4-640621-4
YES	33.02[1.300]	13	4-640621-3
YES	30.48[1.200]	12	4-640621-2
YES	27.94[1.100]	11	4-640621-1
YES	25.40[1.000]	10	4-640621-0
YES	22.86[.900]	9	3-640621-9
YES	20.32[.800]	8	3-640621-8
YES	17.78[.700]	7	3-640621-7
YES	15.24[.600]	6	3-640621-6
YES	12.70[.500]	5	3-640621-5
YES	10.16[.400]	4	3-640621-4
YES	7.62[.300]	3	3-640621-3
YES	5.08[.200]	2	3-640621-2



NO	71.12[2.800]	28	2-640621-8	SUPERSEDED BY 5-640621-8
NO	68.58[2.700]	27	2-640621-7	SUPERSEDED BY 5-640621-7
NO	66.04[2.600]	26	2-640621-6	SUPERSEDED BY 5-640621-6
NO	63.50[2.500]	25	2-640621-5	SUPERSEDED BY 5-640621-5
NO	60.96[2.400]	24	2-640621-4	SUPERSEDED BY 5-640621-4
NO	58.42[2.300]	23	2-640621-3	SUPERSEDED BY 5-640621-3
NO	55.88[2.200]	22	2-640621-2	SUPERSEDED BY 5-640621-2
NO	53.34[2.100]	21	2-640621-1	SUPERSEDED BY 5-640621-1
NO	50.80[2.000]	20	2-640621-0	SUPERSEDED BY 5-640621-0
NO	48.26[1.900]	19	1-640621-9	SUPERSEDED BY 4-640621-9
NO	45.72[1.800]	18	1-640621-8	SUPERSEDED BY 4-640621-8
NO	43.18[1.700]	17	1-640621-7	SUPERSEDED BY 4-640621-7
NO	40.64[1.600]	16	1-640621-6	SUPERSEDED BY 4-640621-6
NO	38.10[1.500]	15	1-640621-5	SUPERSEDED BY 4-640621-5
NO	35.56[1.400]	14	1-640621-4	SUPERSEDED BY 4-640621-4
NO	33.02[1.300]	13	1-640621-3	SUPERSEDED BY 4-640621-3
NO	30.48[1.200]	12	1-640621-2	SUPERSEDED BY 4-640621-2
NO	27.94[1.100]	11	1-640621-1	SUPERSEDED BY 4-640621-1
NO	25.40[1.000]	10	1-640621-0	SUPERSEDED BY 4-640621-0
NO	22.86[.900]	9	-640621-9	SUPERSEDED BY 3-640621-9
NO	20.32[.800]	8	-640621-8	SUPERSEDED BY 3-640621-8
NO	17.78[.700]	7	-640621-7	SUPERSEDED BY 3-640621-7
NO	15.24[.600]	6	-640621-6	SUPERSEDED BY 3-640621-6
NO	12.70[.500]	5	-640621-5	SUPERSEDED BY 3-640621-5
NO	10.16[.400]	4	-640621-4	SUPERSEDED BY 3-640621-4
NO	7.62[.300]	3	-640621-3	SUPERSEDED BY 3-640621-3
NO	5.08[.200]	2	-640621-2	SUPERSEDED BY 3-640621-2

- 1 MATERIAL: CONNECTOR - NYLON UL94V-2 (WHITE).
CONTACTS - 0.30[.012] THICK COPPER ALLOY BRIGHT TIN-LEAD .00203[.000080] MIN THICKNESS FOR 640621-2 THRU 2-640621-8.
MATTE WHISKER MITIGATED TIN .00203[.000080] MIN THICKNESS OVER NICKEL UNDERPLATE FOR 3-640621-2 THRU 5-640621-8.
- 2. CONTACTS ACCEPT 24 AWG WIRE WITH 1.52[.060] MAX INSULATION DIAMETER.
- 3. CONTACTS MUST ACCEPT 0.64±0.03[.025] POST AND REMAIN LOCKED IN POSITION.
- 4 IDENTIFICATION NUMBER FOR LAST CIRCUIT MAY NOT APPEAR ON ALL ASSEMBLIES.
- 5. DIMENSIONS IN BRACKETS ARE IN INCHES.
- 6. HOUSING FEATURES ARE: FEED THRU WITH LOCKING RAMP.
- 7 OBSOLETE PARTS: OBSOLETE CIS STREAMLINING PER D.RENAUD/D.SINISI
- 8 OBSOLETE PARTS

THIS DRAWING IS A CONTROLLED DOCUMENT.		DWN S. CARPENTER 11JUN2003	STE TE Connectivity
DIMENSIONS: mm [INCHES]		CHK D. BOSSI 11JUN2003	
TOLERANCES UNLESS OTHERWISE SPECIFIED:		APVD D. BOSSI 11JUN2003	NAME MTA-100 CONNECTOR ASSEMBLY, 24 AWG, STANDARD
0 PLC ±		PRODUCT SPEC 108-1050	
1 PLC ±		APPLICATION SPEC 114-1019	SIZE A2
2 PLC ±		WEIGHT	CAGE CODE 00779
3 PLC ± 0.13 [0.005]		CUSTOMER DRAWING	DRAWING NO C=640621
4 PLC ±		SCALE 5:1	SHEET 1 OF 1
ANGLES ±		RESTRICTED TO	REV V3
FINISH 1			

X-ON Electronics

Largest Supplier of Electrical and Electronic Components

Click to view similar products for te connectivity manufacturer:

Other Similar products are found below :

[570416-000](#) [CLTEQ-M81CE-SSRELAY-4-20V](#) [4-1633138-8](#) [D38999/24FJ4AN](#) [4-1195131-0](#) [650069-000](#) [SMD100-2](#) [2EDL4CM](#)
[DTS20W19-11PD-3028](#) [DTS20W19-11PD-3028-LC](#) [DTS20W19-32SD-3028-LC](#) [DTS20W19-32SD-3028](#) [NC6-P104-06](#) [TXR64AB90-](#)
[3616AI](#) [DTS26F21-41HE](#) [DTS26F21-41AE](#) [DTS26F21-41PE-LC](#) [DTS26F21-11SE-3028-LC](#) [D38999/24WF32JE](#) [D38999/24WF32SE-LC](#)
[DTS24W19-32HE](#) [D38999/20JB35HA](#) [D38999/24WJ20PA](#) [164-8033-08](#) [D38999/24FF32JE](#) [D38999/24FF32SE-LC](#) [D38999/24WF32JB](#)
[D38999/24WG11HA](#) [D38999/24WG11HN](#) [MS27467T21F11H](#) [DJT16E21-11HA](#) [DTS24F19-32HE](#) [DTS20W19-32SA-3028-LC](#) [DTS24F19-](#)
[11SC-3028-LC](#) [DTS24F19-11SC-3028](#) [DJT14E13-98HB](#) [D38999/20WC8BB](#) [1-330599-5](#) [DTS24F21-41HN-LC](#) [DTS24F21-41HN](#)
[DTS24F21-41AN](#) [DTS24F21-39HN](#) [DTS24F21-41PN-LC](#) [AFD50-10-6SN-1A-LC](#) [DJT10F17-26HC](#) [DTS24W19-32HB](#) [ACT20JE99HA](#)
[DJT10E17-26HC](#) [DJT10E17-26HN](#) [DJT10F17-26HA](#)