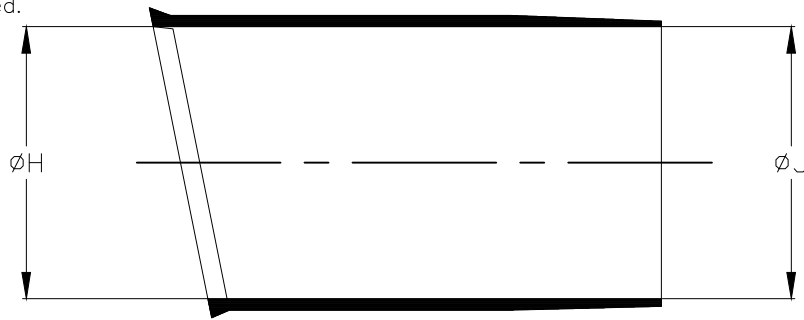


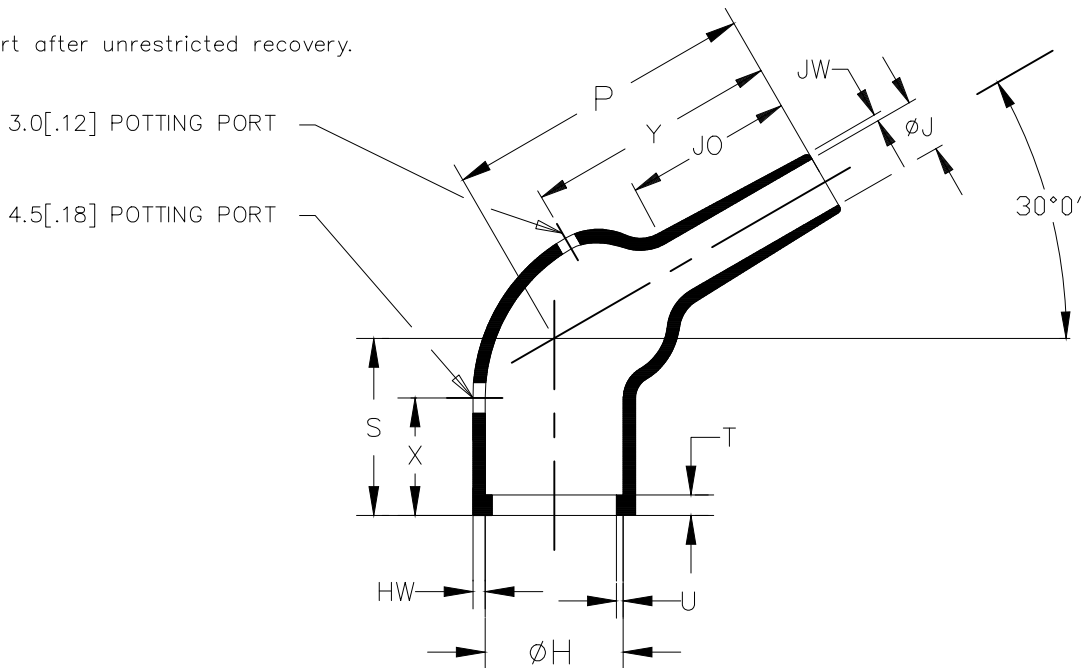
REVISIONS

P	LTR	DESCRIPTION	DATE	DWN	APVD
	4	PRODUCTION ISSUE	01FEB2019	PNT	MT

a) Part as supplied.



b) Part after unrestricted recovery.



DIMENSIONS in millimetres
[in inches, for reference]

Part No.	H		J		P	S	T	U	JO	HW	JW	X	Y
	Min a	Max b	Min a	Max b	Min a	Min a	±10% b	±10% b	±10% b	±20% b	±20% b	±20% b	±20% b
264W012	36 [1.42]	21.4 [.84]	36 [1.42]	8.3 [.33]	46 [1.81]	26 [1.02]	3.0 [.12]	1.0 [.04]	25 [.98]	1.8 [.07]	1.0 [.04]	26 [1.02]	37 [1.46]

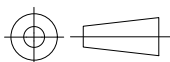
RELEASED FOR PUBLICATION

ALL RIGHTS RESERVED.

© COPYRIGHT - TE Connectivity Ltd.

THIS DRAWING IS UNPUBLISHED.

DIMENSIONS: mm [INCHES]	DWN	01FEB2019	MATERIAL	SEE SHEET 2	FINISH	-					
	CHK	01FEB2019	TE Connectivity Ltd.								
TOLERANCES UNLESS OTHERWISE SPECIFIED:	APVD	01FEB2019									
	PRODUCT SPEC	-	NAME	LIPPED BOOT, 120 DEG							
0 PLC ± -	APPLICATION SPEC	-	SIZE	A4	CAGE CODE	00779	DRAWING NO	C-264W012-XX-0	RESTRICTED TO	-	
1 PLC ± -	WEIGHT	-	CUSTOMER DRAWING			SCALE	DNS	SHEET	1 OF 2	REV	4
2 PLC ± -											
3 PLC ± -											
4 PLC ± -											
ANGLES ± -											



REVISIONS				
P	LTR	DESCRIPTION	DATE	APVD
-	-	SEE SHEET 1	-	-

COMPATIBILITY CHART				
MATERIAL DASH NO.	MATERIAL DESCRIPTION	RT SPEC	COATING SLASH NO.	COATING SPEC
-3	POLYOLEFIN, SEMI-RIGID	RT-301	/42;/86;/180	S1017;S1048;S1030
-4	POLYOLEFIN, FLEXIBLE	RT-1304	/42;/86;/180	S1017;S1048;S1030
-25	ELASTOMER, FLUID RESISTANT	RW-2070	/42;/86;/225	S1017;S1048;S1206

ORDERING INFORMATION

264W012 - XX/XX - 0

COLOR DESIGNATOR

ADHESIVE SLASH NUMBER
(IF REQUIRED, SEE COMPATIBILITY CHART)

MATERIAL DASH NUMBER
(SEE COMPATIBILITY CHART)

BASE PART NUMBER

NOTES:

- AS SUPPLIED DIMENSIONS ARE FOR UNCOATED PARTS. WHEN COATING IS ADDED, ENTRY DIAMETERS WILL REDUCE BY 1.5mm[.06] MAX.

RELEASED FOR PUBLICATION

ALL RIGHTS RESERVED.

© COPYRIGHT - TE Connectivity Ltd.

THIS DRAWING IS UNPUBLISHED.

DIMENSIONS: mm [INCHES]	DWN PRAVEEN N T	01FEB2019	MATERIAL	-	FINISH	-
	CHK N NAGAR	01FEB2019	TE Connectivity Ltd.			
TOLERANCES UNLESS OTHERWISE SPECIFIED:	APVD M TAYLOR	01FEB2019				
0 PLC ± -	PRODUCT SPEC	-	NAME LIPPED BOOT, 120 DEG			
1 PLC ± -	APPLICATION SPEC	-				
2 PLC ± -	WEIGHT	-	SIZE	A4	CAGE CODE	00779
3 PLC ± -		DRAWING NO	C-264W012-XX-0		RESTRICTED TO	-
4 PLC ± -			SCALE	DNS	SHEET	2 OF 2
ANGLES ± -	CUSTOMER DRAWING					

X-ON Electronics

Largest Supplier of Electrical and Electronic Components

Click to view similar products for [Heat Shrink Cable Boots & End Caps](#) category:

Click to view products by [TE Connectivity](#) manufacturer:

Other Similar products are found below :

[577159N001](#) [645494-000](#) [CX4132-000](#) [687025-000](#) [705331-000](#) [718446-000](#) [725666N001](#) [729257-000](#) [F27131-000](#) [F85868-000](#) [770-003S106W2](#) [806542N001](#) [807507-000](#) [808059-000](#) [808362-000](#) [808618-000](#) [809125-000](#) [809130-000](#) [809218-000](#) [812014-000](#) [812047-000](#) [813166-000](#) [813767N002](#) [814741-000](#) [819117N001](#) [823026-000](#) [823070-000](#) [825002-000](#) [841189N001](#) [861471-000](#) [866647-000](#) [879515-000](#) [937577-000](#) [957073-000](#) [982033-2](#) [A77813-000](#) [R280576000](#) [D96192-000](#) [163549-000](#) [MTPSRBCL-C](#) [1954015-1](#) [200W531-3-0](#) [202A163-4-0-CS5067](#) [202A343-3-00-0](#) [202B221-13-0](#) [202B231-13-0](#) [202B563-25-07-0](#) [202C241-13-0](#) [202D121-4-01/86-0](#) [202D132-4-07/42-0](#)