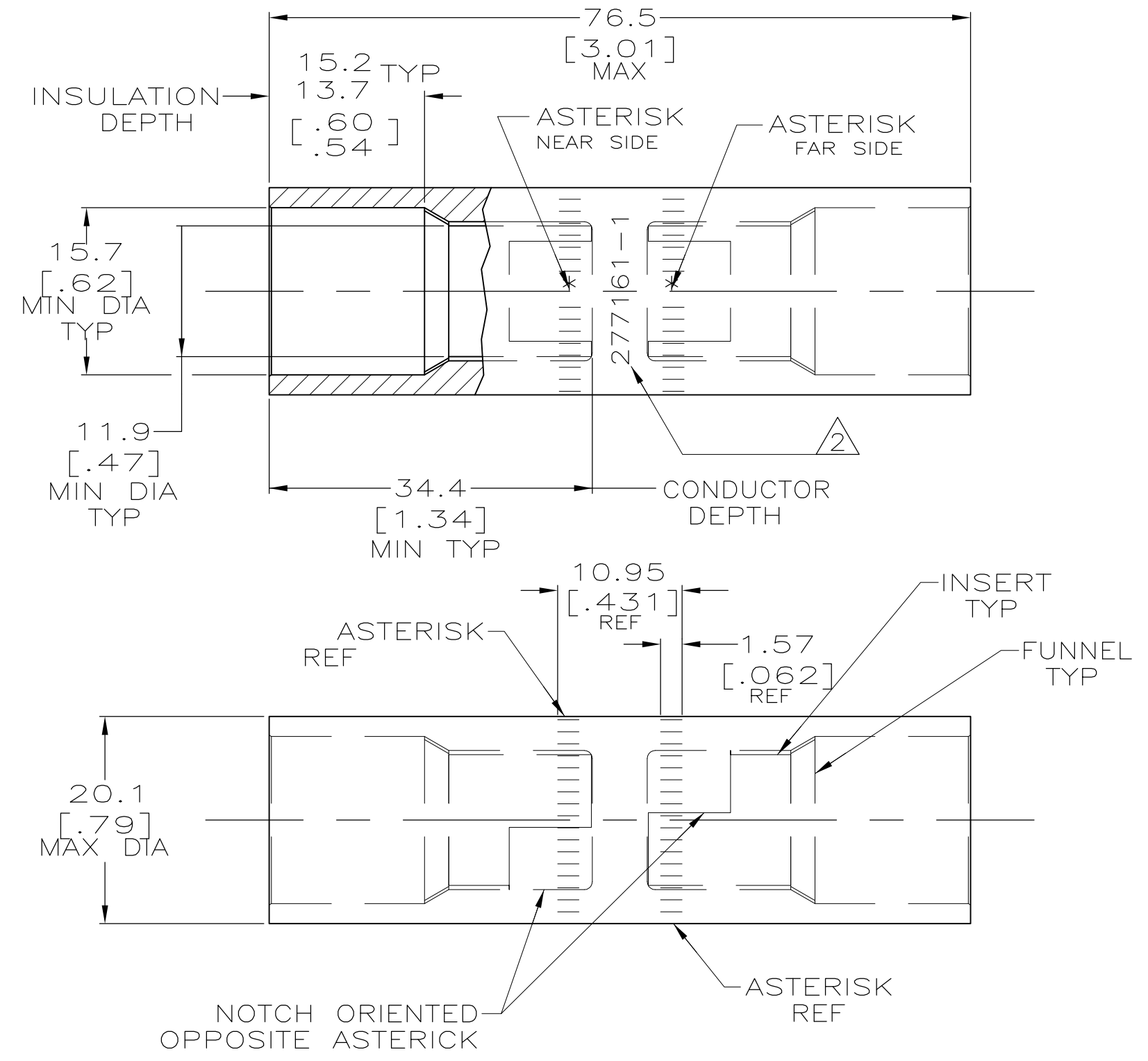


THIS DRAWING IS UNPUBLISHED. RELEASED FOR PUBLICATION
 © COPYRIGHT - By - ALL RIGHTS RESERVED.

LOC	DIST	REVISIONS					
G	86	P	LTR	DESCRIPTION	DATE	DWN	APVD
		L		REV PER ECO-11-008916	13MAY11	PY	BW



1 WIRE INSULATION DIA: 12.70 - 13.97
 [.500] [.550]
 △ STAMP " 277161-1 AMP 2/0 AL-1/0 CU"
 APPROX AS SHOWN.

SPLICE: COPPER ASTM B-187 ANNEALED TIN PL 0.00381 [.000150] MIN THK PER ASTM B545		277161-1
INSERT & FUNNEL: BRASS ASTM B36 NICKEL PL SAE AMS QQ-N-290A, DATED JULY 2000, 0.00254 [.000100] MIN THK		
MATERIAL & FINISH		PART NUMBER

THIS DRAWING IS A CONTROLLED DOCUMENT.		DWN DK SCHRUM 18NOV96	STE TE Connectivity	
DIMENSIONS: mm[INCHES]		CHK WJ VOCKROTH 19NOV96		
TOLERANCES UNLESS OTHERWISE SPECIFIED:		APVD JL MECKLEY 19NOV96	NAME	
0 PLC ± -		PRODUCT SPEC	WIRE SPLICE, BUTT, SEALED COPALUM, 71.3mm2 [2/0] ALUMINUM 53.9mm2 [1/0] COPPER	
1 PLC ± -		APPLICATION SPEC	SIZE	CAGE CODE
2 PLC ± -		108-11011	114-2134	DRAWING NO
3 PLC ± -		WEIGHT 107.7 ±5 GRAMS	A300779	RESTRICTED TO
4 PLC ANGLES ± -		CUSTOMER DRAWING	C=277161	SCALE 2:1
MATERIAL SEE TABLE		FINISH SEE TABLE		SHEET 1 OF 1
				REV L

X-ON Electronics

Largest Supplier of Electrical and Electronic Components

Click to view similar products for [Terminals](#) category:

Click to view products by [TE Connectivity](#) manufacturer:

Other Similar products are found below :

[00-054007-01074-6](#) [00-054007-70206-1](#) [00-054007-70210-8](#) [00-054007-70217-7](#) [00-054007-70226-9](#) [00-054007-70228-3](#) [00-054007-70248-1](#) [00-054007-70256-6](#) [00-054007-70301-3](#) [00-054007-70316-7](#) [00-054007-49560-4](#) [00-054007-70209-2](#) [00-054007-70225-2](#) [00-054007-70227-6](#) [00-054007-70231-3](#) [00-054007-70241-2](#) [00-054007-70242-9](#) [00-054007-70244-3](#) [00-054007-70246-7](#) [00-054007-70263-4](#) [00-054007-70288-7](#) [00-054007-70290-0](#) [00-054007-70300-6](#) [00-054007-70304-4](#) [01-2065-1-0216](#) [01-2900-1-04412](#) [00581P0075](#) [600TS-10](#) [60205-1](#) [604200-1](#) [605601-1](#) [60598-1-CUT-TAPE](#) [61314-6-C](#) [61810-3](#) [61-S](#) [61-SN](#) [626-0194](#) [62-NBM-A](#) [62-SN](#) [62-SP](#) [63-S](#) [640179-1](#) [M55155/059I03](#) [M55155/079C01](#) [M55155/099H02](#) [M55155/109H01](#) [M55155/109H02](#) [M55155/12XH05](#) [M55155/16XH02](#) [M55155/29-5S](#)