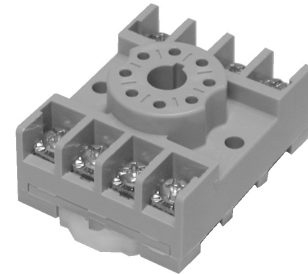


**Sockets & Accessories, KRPA Relays**

- Sockets for relays with 8-pin (octal) and 11-pin (undecal) round plugs
- Screw terminals
- Hold down springs
- Various mounting options



**Approvals**

UL E59244, CSA LR15734

Technical data of approved types on request

**Technical Data**

Socket contact material	Spring brass, tin plated
Socket body material	
27E122 and 27E123	Glass-filled polyester
27E891 and 27E892	Polyamide
Maximum current	10A
Maximum Voltage	300VAC (600V for 27E891)

**Ordering Code for Sockets**

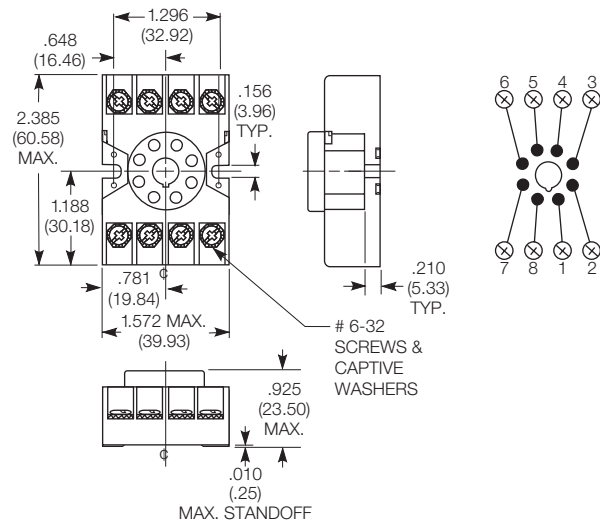


Product Code	Pins	Terminal type	Mounting	Part number
27E122	8	screw	panel/rail	1393143-6
27E891			snap-on DIN-rail	2-1419106-3
27E123	11		panel/rail	1393143-7
27E892			snap-on DIN-rail	2-1419106-4

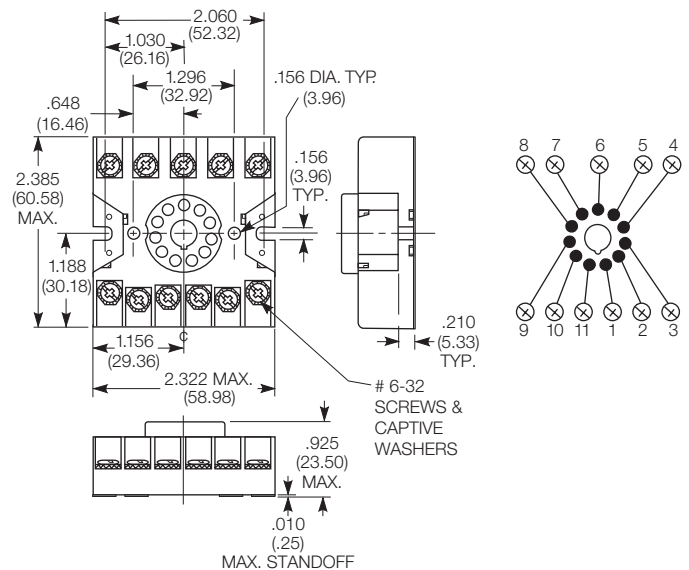
All accessories must be ordered separately.

**Dimensions**

Screw terminal socket for relays with 8-pin octal base 27E122  
Offers screw termination for KRPA relays and other devices with 8-pin octal base. When panel mounting, two #6-32 screws of suitable length are required. When track mounting, two 24A071 retainer clips or two 24A072 retainer clips are required.



Screw terminal socket for relays with 11-pin undecal base 27E123  
Offers screw termination for KRPA relays and other devices with 11-pin undecal base. When panel mounting, two #6-32 screws of suitable length are required. When track mounting, two 24A071 retainer clips or two 24A072 retainer clips are required. —

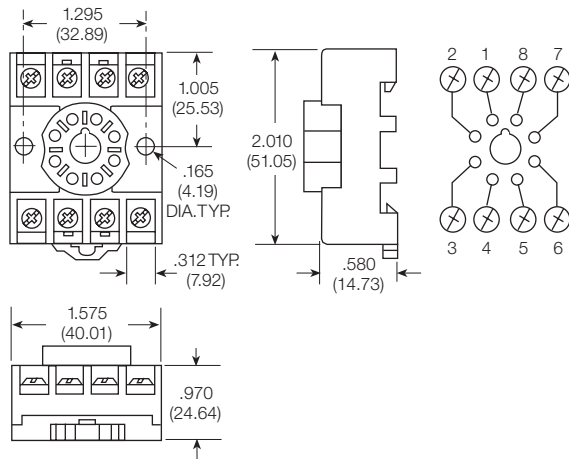


**Sockets & Accessories, KRPA Relays (Continued)**

**Dimensions**

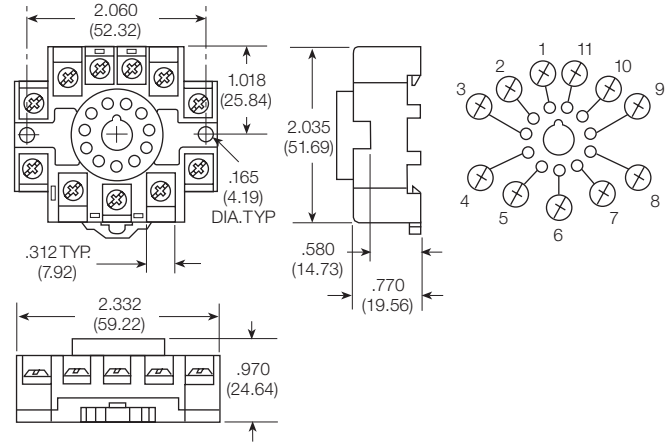
Screw terminal, DIN rail, snap-mount socket 27E891

Offers screw termination for KRPA relays and other devices with 8-pin octal base. This socket is constructed with a spring-loaded latch which allows it to be quickly snapped onto or removed from a DIN or "top hat" style mounting track. No special tools or extra hardware is required for installation. Sockets have M3.5 screw terminals which accept up to two #12 AWG wires.



Screw terminal, DIN rail, snap-mount socket 27E892

Offers screw termination for KRPA relays and other devices with 11-pin undecal base. This socket is constructed with a spring-loaded latch which allows it to be quickly snapped onto or removed from a DIN or "top hat" style mounting track. No special tools or extra hardware is required for installation. Sockets have M3.5 screw terminals which accept up to two #12 AWG wires.



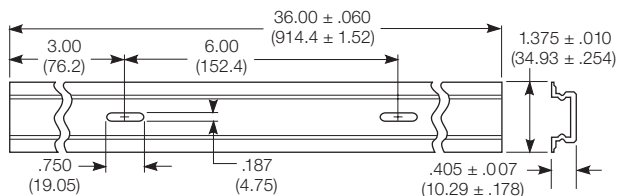
**Ordering Code for Accessories**

Product Code	Description	Part number
20C318	Snap-in relay hold down spring for use with KRPA, KCP and R10-T relay and KRPA sockets listed on these pages.	4-1393159-8
20C176	Relay hold down spring for use with KRPA, KCP and R10-T relays and various hard mount KRPA sockets. Is held in place by mounting hardware (not supplied).	3-1393159-3
20C206	Relay hold down spring for use with KRP3 and KAP relays and various hard mount KRPA sockets. Is held in place by mounting hardware (not supplied).	1419111-1
20C419	Snap-in relay hold down spring (coil type) for use with various relays and various hard mount KRPA sockets.	5-1393159-0
24A110	Mounting track	1419111-6
24A071	Steel mounting clip with #6-32 screw - use with sockets on 24A110 track	1419111-5
24A072	Plastic twist mounting clip - use with sockets on 24A110 track	5-1393159-4
40G432	Plastic insulator - use with 24A071 to make end clip for 24A110 track	9-1393159-5

All accessories must be ordered separately.

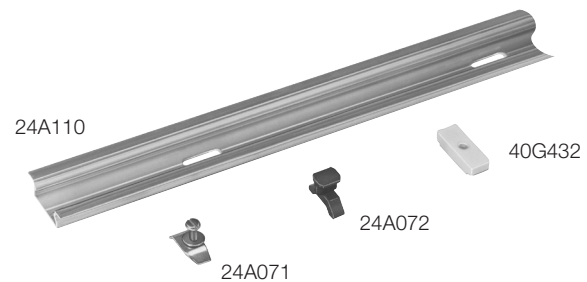
**Dimensions**

24A110 DIN rail style mounting track



24A110 mounting track is designed to accept snap-mount sockets, as well as other P&B screw terminal sockets. Track is made of lightweight, sturdy extruded aluminum and is shipped in three-foot (914cm) lengths with mounting holes on six-inch (152mm) centers. Track can be cut to shorter lengths or used end-to-end.

Track and mounting accessories



## X-ON Electronics

Largest Supplier of Electrical and Electronic Components

*Click to view similar products for [Relay Sockets & Fixings](#) category:*

*Click to view products by [TE Connectivity](#) manufacturer:*

Other Similar products are found below :

[00008258500](#) [00111976502](#) [0000-825-81-00](#) [60SY4S05](#) [M41G](#) [670-0125](#) [670-0127](#) [6700152](#) [670-0153](#) [6700156](#) [D258-2TS00](#) [70-309](#) [7-1393143-3](#) [7-1616360-5](#) [8000-DG2-5](#) [911361](#) [9-1616339-5](#) [PJF11N](#) [GDA12HA](#) [GDA12HD](#) [GDA12SA](#) [GDA12SD](#) [GDA16HD](#) [GDA22HA](#) [GDA95A](#) [GDA95D](#) [GFX20](#) [PT08QN](#) [PT 1/8 D = 3.2](#) [GUA1](#) [GUA2-11](#) [GUA4-04](#) [GUA4-31](#) [GUM5R](#) [GUR-120](#) [GUR-24](#) [GUR-240](#) [GUR-277](#) [GURX-277](#) [GUW12](#) [GUW95](#) [GUZ63L](#) [R99-11 FOR MY\(NAMEPLATE\)](#) [D52PR2T](#) [RES100K](#) [1310H-HDC](#) [1390H-1ST](#) [1393824-3](#) [1390H-2PC](#) [1410-2SM](#)