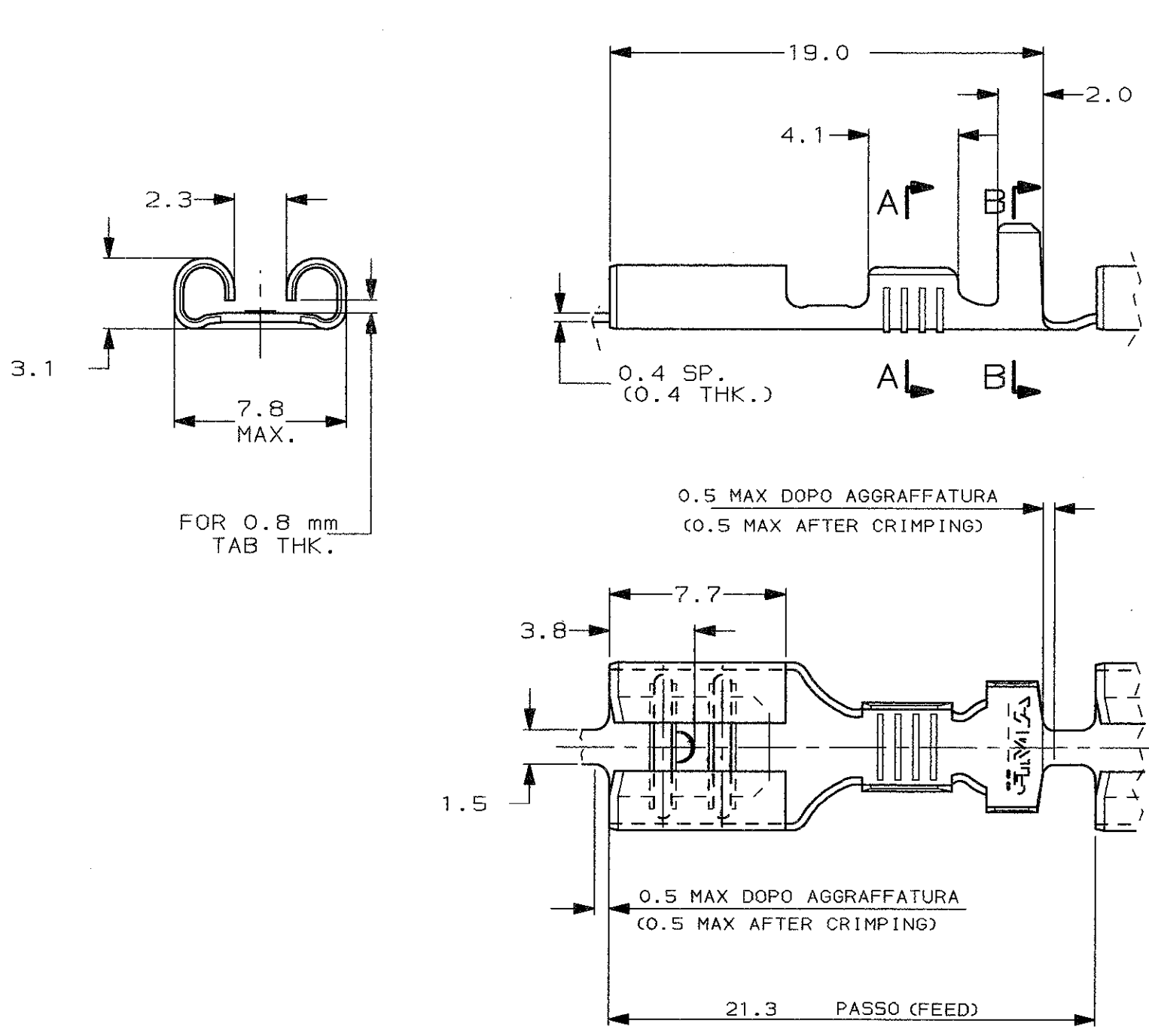


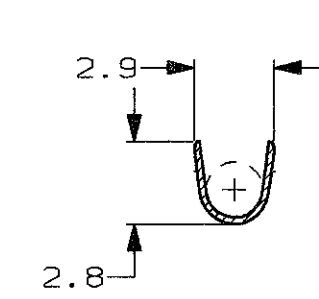
SCALA NON IMPEGNATIVA  
(DO NOT SCALE)  
DIMENSIONI IN mm  
(DIMENSIONS IN mm)

**METRIC**

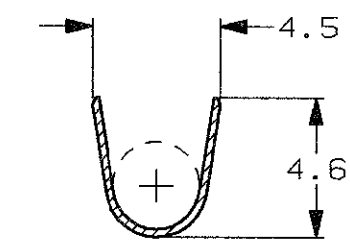
THIRD ANGLE  
PROJECTION



SEZIONE A-A  
(SECTION A-A)



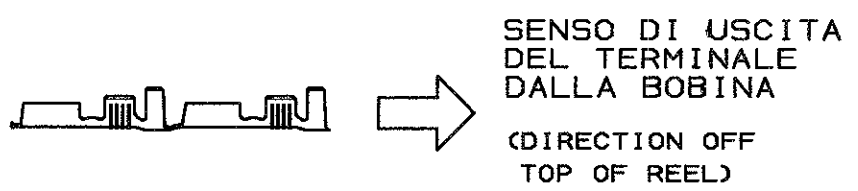
SEZIONE B-B  
(SECTION B-B)



- 1) BOBINATI SU BOBINA SPECIALE (7000 PEZZI/BOBINA)  
(REELED ON SPECIAL REEL (7000 PCS/REEL))
- 2) SPECIFICA DI PRODOTTO 108-20019.  
(PRODUCT SPEC. 108-20019).  
SPECIFICA DI AGGRAFFATURA 114-20023.  
(APPLICATION SPEC. 114-20023).

-	1	NUDO (UNPLATED)	OTTONE (BRASS)	280000-7	AA
-	1	STAGNATO (TIN PLTD)	OTTONE (BRASS)	280000-6	AA
PEZZO SCIOLTO P/N (LOOSE PIECE P/N)	NOTE	FINITURA / COLORE (FINISH / COLOUR)	MATERIALE (MATERIAL)	NUMERO (PART NUMBER)	REV.

STATO DI FORNITURA -SCALA 1:1  
(SUPPLYING CONDITION -SCALE 1:1-)



CUSTOMER DWG. FOR REFERENCE ONLY  
DISEGNO PER CLIENTE SOLO PER RIFERIMENTO

THIS DRAWING IS UNPUBLISHED | RELEASE FOR PUBLICATION | 19

TOLLERANZE: SE NON DIVERSAMENTE SPECIFICATO (TOLERANCES: UNLESS OTHERWISE SPECIFIED)	DIAM. ISOLANTE (INS. DIA. RANGE)	RANGO FILO (WIRE RANGE)	SCALA (SCALE)
± 0.3	2.2-3.3 mm	0.3-0.8 mm <sup>2</sup>	4:1
ANGOLI (ANGLES)	TE Connectivity		

DIS. 4 LUGLIO 96 (DR.) A. FROLA  
DESCRIZIONE (DESCRIPTION) FASTON® Connector .250" sr. REC. CONTACT

CONT. 4 LUGLIO 96 (CHK) C. TARTARI

AB1	REVISED PER ECO-11-005140	RK	31MAR11	APP. (APP.)
REV. (REV.)	REVISIONI (REVISION RECORD)	DIS. (DR.)	DATA (DATE)	
LOC. SIZE NUMERO (DWG NO.) I A3 C-280000				REV. (REV.) FOGLIO (SHEET) AB1 1 DI (OF) 1

DISTRIBUZIONE (PRINT DIST.)

## X-ON Electronics

Largest Supplier of Electrical and Electronic Components

*Click to view similar products for [Terminals](#) category:*

*Click to view products by [TE Connectivity](#) manufacturer:*

Other Similar products are found below :

[00-054007-01074-6](#) [00-054007-70206-1](#) [00-054007-70210-8](#) [00-054007-70217-7](#) [00-054007-70226-9](#) [00-054007-70228-3](#) [00-054007-70248-1](#) [00-054007-70256-6](#) [00-054007-70301-3](#) [00-054007-70316-7](#) [0-0320562-0](#) [00-054007-49560-4](#) [00-054007-70209-2](#) [00-054007-70225-2](#) [00-054007-70227-6](#) [00-054007-70231-3](#) [00-054007-70241-2](#) [00-054007-70242-9](#) [00-054007-70244-3](#) [00-054007-70246-7](#) [00-054007-70263-4](#) [00-054007-70288-7](#) [00-054007-70290-0](#) [00-054007-70300-6](#) [00-054007-70304-4](#) [01-2065-1-0216](#) [01-2900-1-04412](#) [00581P0075](#) [600TS-10](#) [60205-1](#) [604200-1](#) [605601-1](#) [60598-1-CUT-TAPE](#) [61314-6-C](#) [61810-3](#) [61-S](#) [61-SN](#) [626-0194](#) [62-NBM-A](#) [62-SN](#) [62-SP](#) [63-S](#) [640179-1](#) [M55155/059I03](#) [M55155/079C01](#) [M55155/099H02](#) [M55155/109H01](#) [M55155/109H02](#) [M55155/12XH05](#) [M55155/16XH02](#)