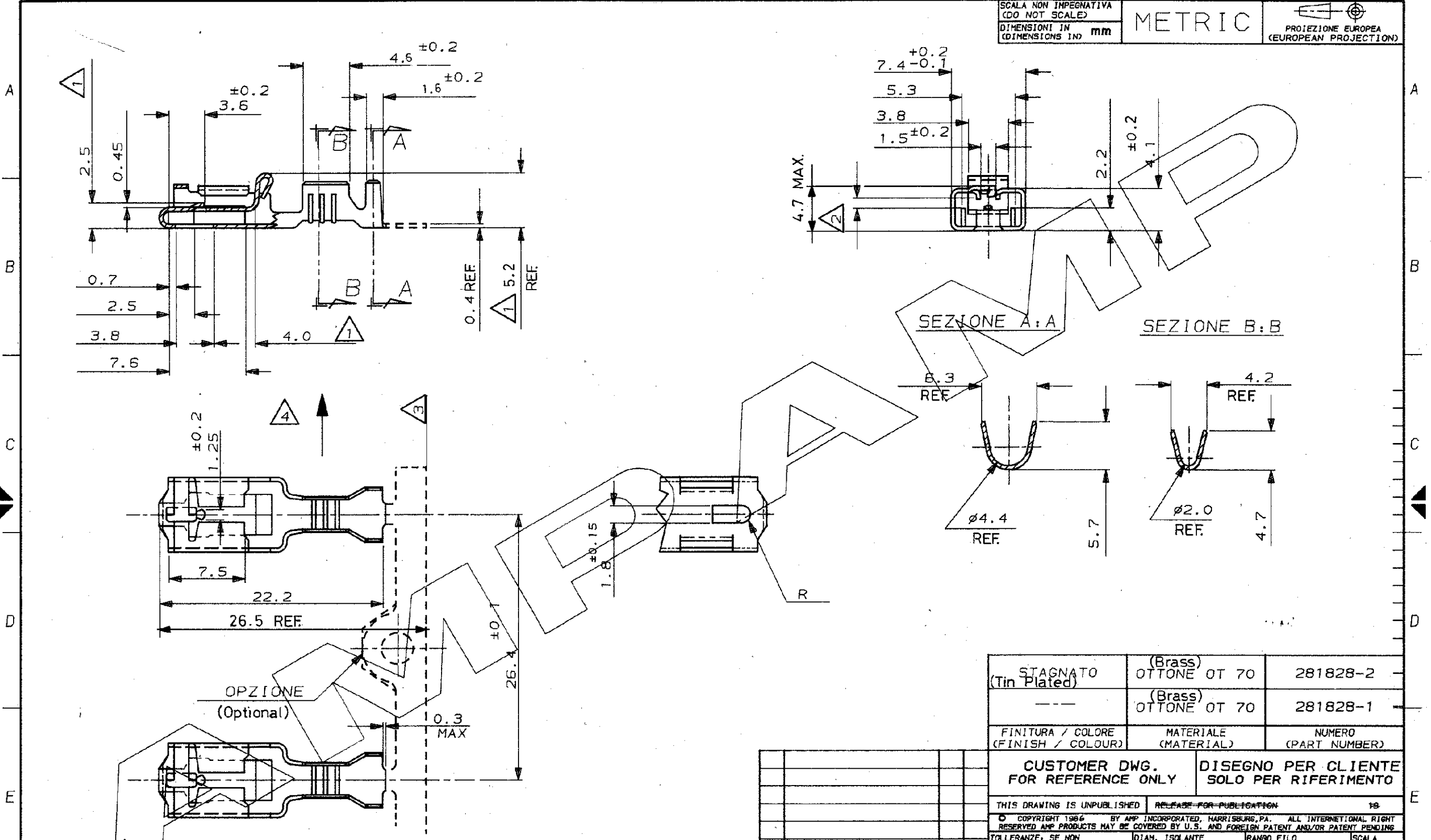


SCALA NON IMPEGNATIVA  
(DO NOT SCALE)  
DIMENSIONI IN mm  
(DIMENSIONS IN IN)

METRIC

PROIEZIONE EUROPEA  
(EUROPEAN PROJECTION)



NOTE:

- 1 DA MISURARSI CON LA MOLLA IN POSIZIONE ORIZZONTALE  
(Measured when spring is horizontal)
- 2 ADATTO PER TERMINALE MASCHIO CON FORO, SECONDO TABELLA FIAT 91319 FOGLIO 2 (TIPO A) (Suitable for Tab 0.8 THK with hole)
- 3 MASSIMA SCIABOLATURA AMMESSA: 18 mm PER METRO (Camber: 18mm/m)
- 4 SENSO DI USCITA DEL TERMINALE DALLA BOBINA. (P.N. -2)  
(Direction off top of reel)

STAGNATO (Tin Plated)	(Brass) OTTONE OT 70	281828-2
---	(Brass) OTTONE OT 70	281828-1
FINITURA / COLORE (FINISH / COLOUR)	MATERIALE (MATERIAL)	NUMERO (PART NUMBER)

CUSTOMER DWG. FOR REFERENCE ONLY      DISEGNO PER CLIENTE SOLO PER RIFERIMENTO

THIS DRAWING IS UNPUBLISHED      RELEASE FOR PUBLICATION      18

© COPYRIGHT 1986 BY AMP INCORPORATED, HARRISBURG, PA. ALL INTERNATIONAL RIGHTS RESERVED AMP PRODUCTS MAY BE COVERED BY U.S. AND FOREIGN PATENT AND/OR PATENT PENDING

TOLLERANZE, SE NON DIVERSAMENTE SPECIFICATO (TOLERANCES, UNLESS OTHERWISE SPECIFIED)	DIAM. ISOLANTE (INS. DIA. RANGE)	RANGO FILO (WIRE RANGE)	SCALA (SCALE)
±0.3	3.6-4.3 mm	2.5-4.0 mm <sup>2</sup>	-

ANGOLI CANGIATI  
(CORNERS)      ± 2°

DIS. CDR. 2

DESCRIZIONE (DESCRIPTION)      (MARK I)

CONT. (CONT.)      -

DESCRIZIONE (DESCRIPTION)      POSITIVE LOCK REC.

REV.	REVISIONI (REVISION RECORD)	DIS. DATA (DATE)	APP. (APP.)
A	In Produzione	ES. 3-XII 87	

LOC. SIZE NUMERO (CONC. NO.)	REV.	FOGLIO (SHEET)
I A3 C-281828	A	01 (COP.)

DISTRIBUZIONE  
(PRINT DIST.)

## X-ON Electronics

Largest Supplier of Electrical and Electronic Components

*Click to view similar products for [Terminals](#) category:*

*Click to view products by [TE Connectivity](#) manufacturer:*

Other Similar products are found below :

[00-054007-01074-6](#) [00-054007-70206-1](#) [00-054007-70210-8](#) [00-054007-70217-7](#) [00-054007-70226-9](#) [00-054007-70228-3](#) [00-054007-70248-1](#) [00-054007-70256-6](#) [00-054007-70301-3](#) [00-054007-70316-7](#) [00-054007-49560-4](#) [00-054007-70209-2](#) [00-054007-70225-2](#) [00-054007-70227-6](#) [00-054007-70231-3](#) [00-054007-70241-2](#) [00-054007-70242-9](#) [00-054007-70244-3](#) [00-054007-70246-7](#) [00-054007-70263-4](#) [00-054007-70288-7](#) [00-054007-70290-0](#) [00-054007-70300-6](#) [00-054007-70304-4](#) [01-2065-1-0216](#) [01-2900-1-04412](#) [00581P0075](#) [600TS-10](#) [60205-1](#) [604200-1](#) [605601-1](#) [60598-1-CUT-TAPE](#) [61314-6-C](#) [61810-3](#) [61-S](#) [61-SN](#) [626-0194](#) [62-NBM-A](#) [62-SN](#) [62-SP](#) [63-S](#) [640179-1](#) [M55155/059I03](#) [M55155/079C01](#) [M55155/099H02](#) [M55155/109H01](#) [M55155/109H02](#) [M55155/12XH05](#) [M55155/16XH02](#) [M55155/29-5S](#)