

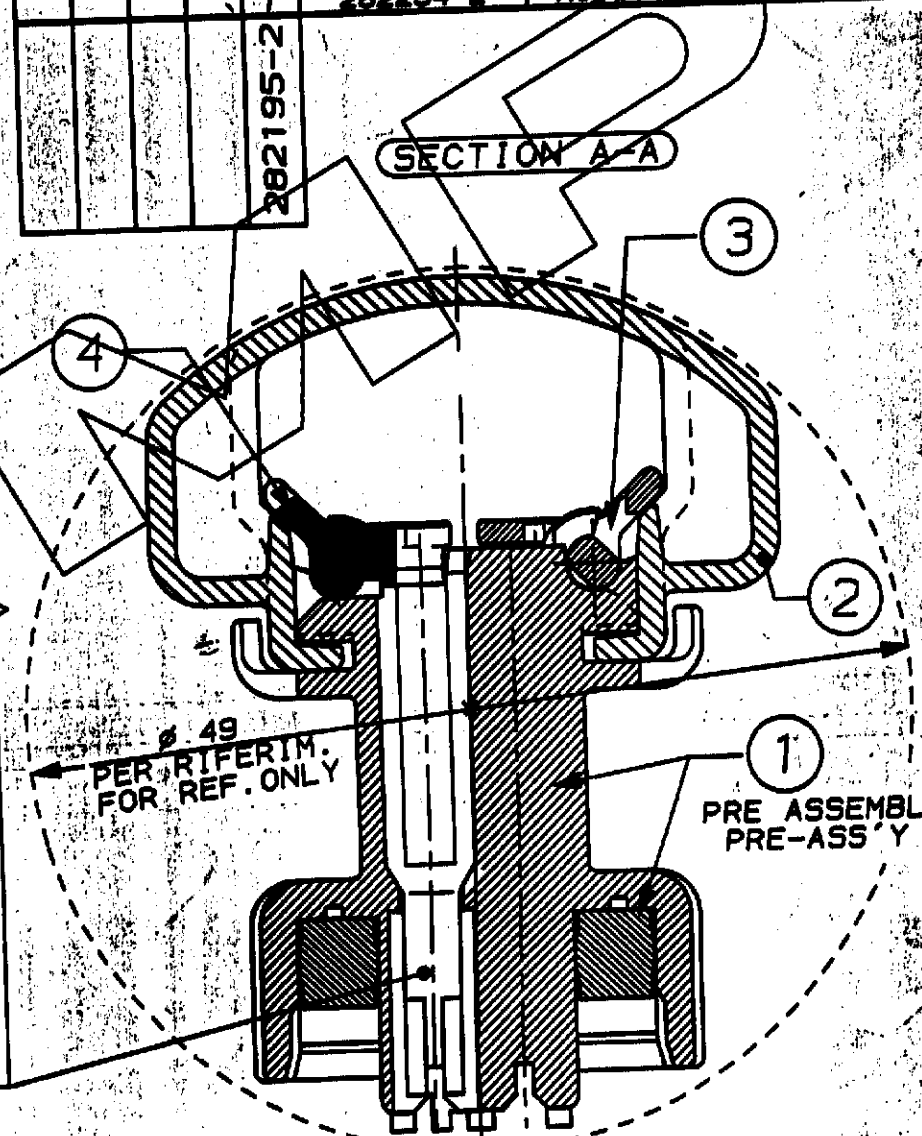
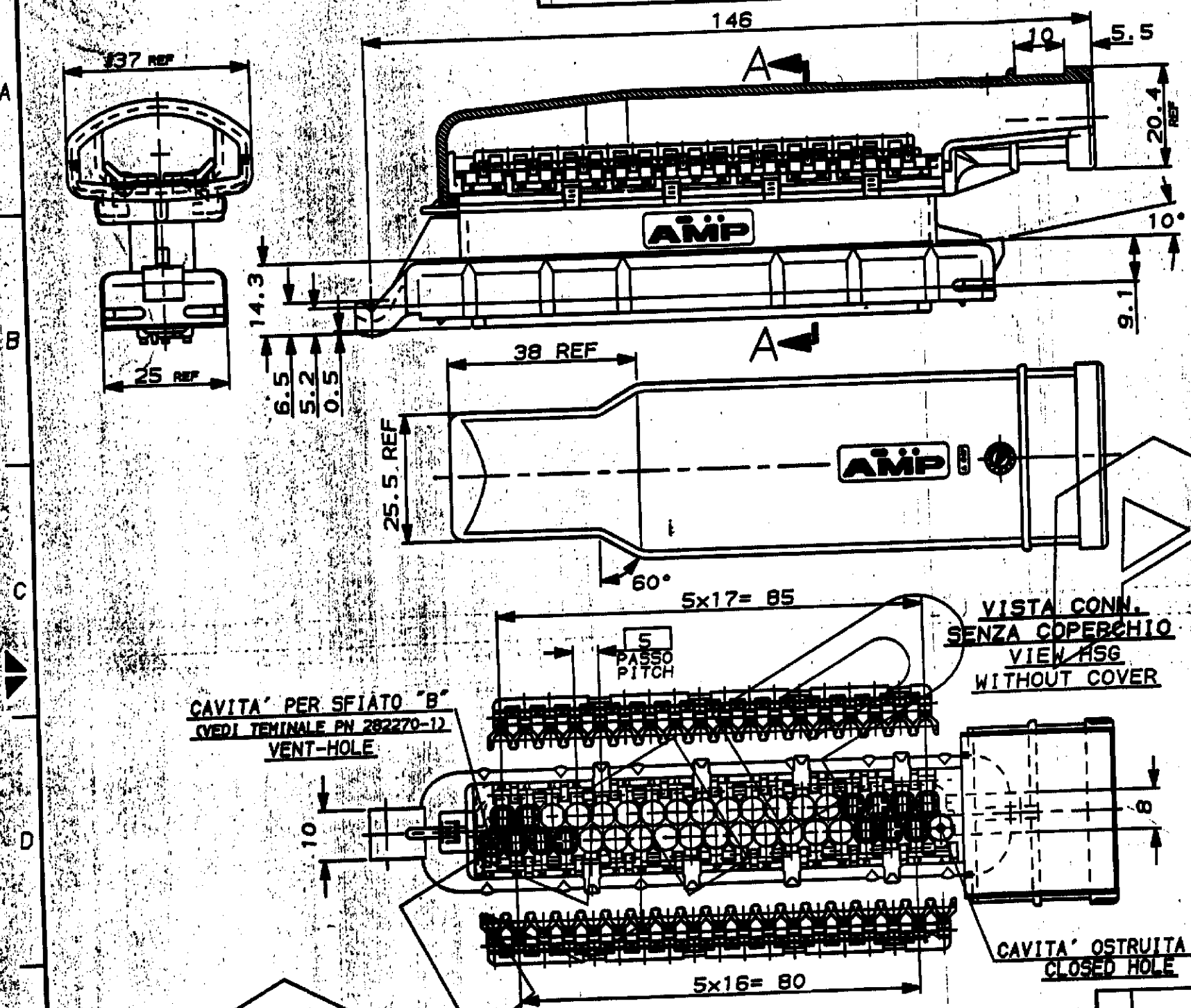
STANDARD VERSION

SCALA NON IMPERATIVA
(DO NOT SCALE)
DIMENSIONI IN mm
(DIMENSIONS IN mm)

METRIC

PROIEZIONE EUROPEA
(EUROPEAN PROJECTION)

Q.TY REQ'D PER ASS'Y		PART. LIST		
		PART. NO.	DESCRIPTION	QTY
	1	282267-1	SEC. LOCK 19 POS.	4
	1	282266-1	SEC. LOCK 18 POS.	3
	1	282268-1	COVER	2
	1	282264-2	HOUSING ASS'Y	1



N°35 CAVITA' ADATTE PER TERMINALE "AMP JUNIOR POWER TIMER" E RELATIVI GOMMINI.
N°35 CAVITIES SUITABLE FOR "AMP JUNIOR POWER TIMER" CTS.

VISTA CONN. SENZA COPERCHIO
VIEW HSG WITHOUT COVER

CAVITA' PER SFIATO "B"
(VEDI TERMINALE PN 282270-12)
VENT-HOLE

CAVITA' OSTRUITA "A"
CLOSED HOLE

NOTES:

- 1 MATERIALI: HSG, COVER AND SEC. LOCKS IN PA 66 GLASS FILLED - SEALING OF SILICONE RUBBER
- 2) ITEMS 1, 2, 3, 4 PACKAGE INTO A CARTON BOX.

NOTE:

- 1 MATERIALI: -BLOCCHETTO, COPERCHIO E SEC. LOCK IN PA 66 CAR. VETRO - GUARNIZIONE IN SILICONE (Col. ROSSO)
- 2) I PART. 1, 2, 3, 4 SONO CONFEZIONATI IN KIT IN UN'UNICA SCATOLA DI CARTONE.

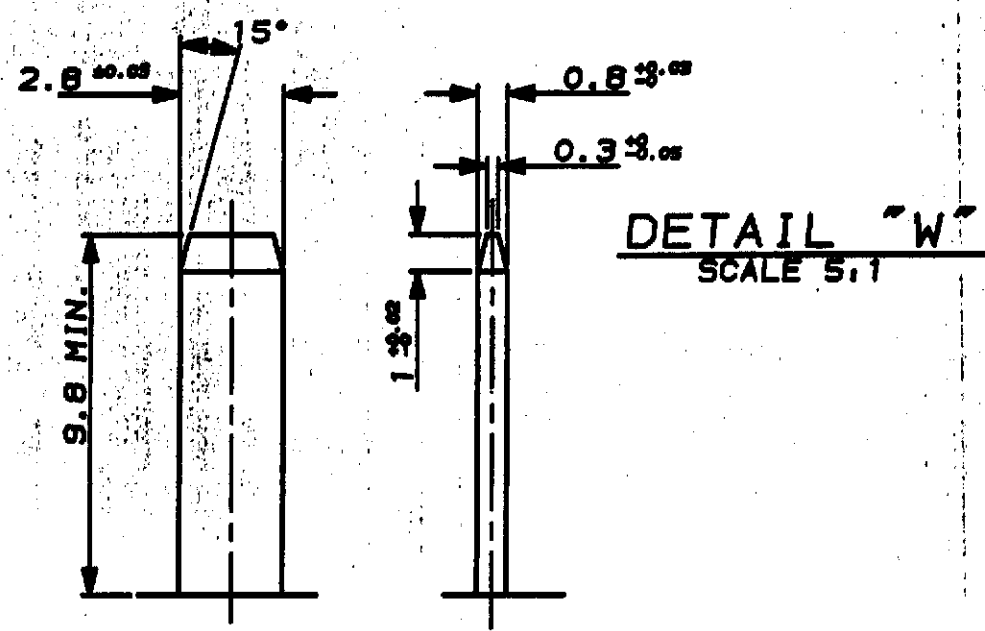
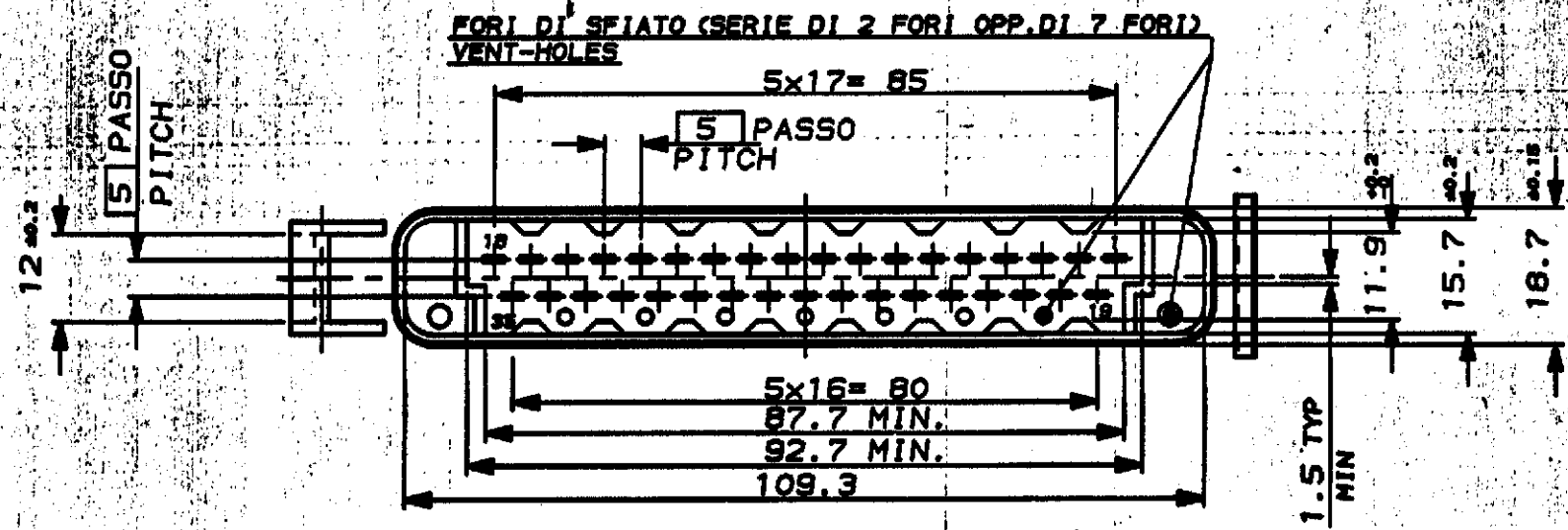
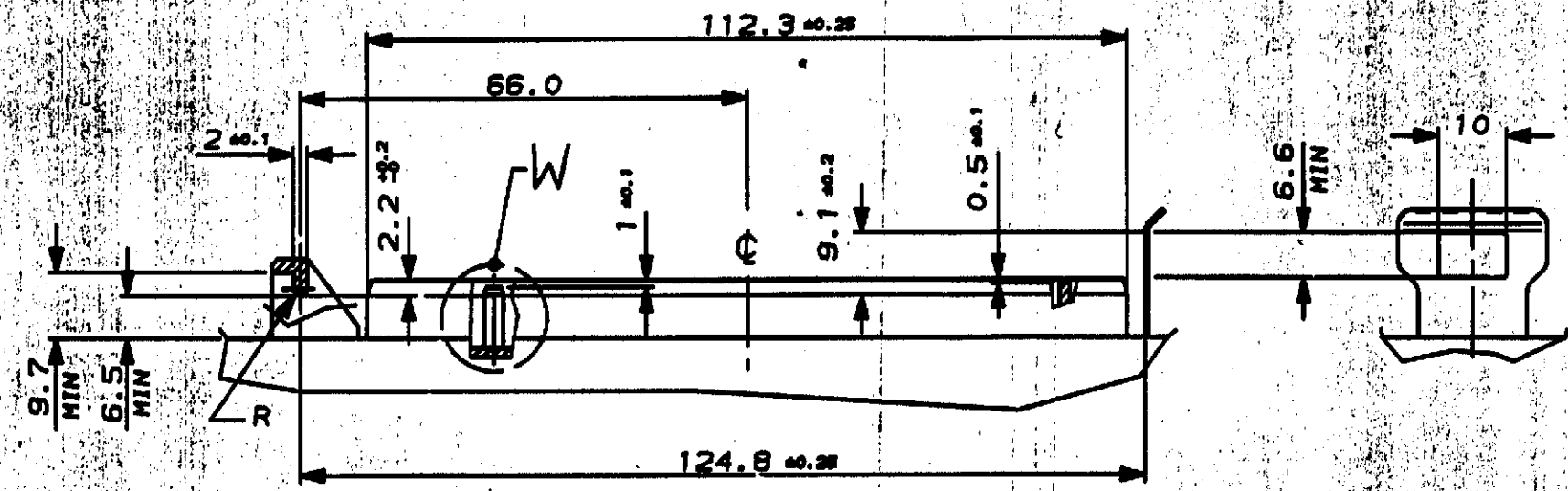
BLACK COLOUR	1 MATERIALE (MATERIAL)	282195-2 NUMERO (PART NUMBER)
CUSTOMER DWG. FOR REFERENCE ONLY		DISEGNO PER CLIENTE SOLO PER RIFERIMENTO
THIS DRAWING IS UNPUBLISHED		
COPYRIGHT IS RESERVED BY AMP INCORPORATED, PITTSBURGH, PA. ALL INTERNATIONAL RIGHTS RESERVED. AMP PRODUCTS MAY BE COVERED BY U.S. AND FOREIGN PATENT AND/OR PATENT PENDING.		
TOLLERANZE, SE NON DIVERSAMENTE SPECIFICATO TOLERANCES, UNLESS OTHERWISE SPECIFIED	DIAM. ISOLANTE INS. DIA. RANGED 1.7-2.1 mm	RANGO FILE WIRE RANGED 0.5-1.0 mm 1.5-2.5 mm
± 0.3	AMP ITALIA S.p.A. Corso P. Lli Garvi, 18 COLLENO (TORINO)	
ANGOLI CAMBERED ± 2°	DESCRIZIONE DESCRIPTION 35 P. SPLASH PROOF CONN. WITH SECONDARY LOCK	
DIS. E. CINI (GR.) 11 MAY 1980	LOC. SIZE NUMERO COMP. NO.	REV. FORNITORE DI
RELEASED FOR PRODUCTION EC ET00-0175-83	CON. COORD. C. TARTARI	I A3 C-282195 A 1 DI 2
REVISIONI REVISION RECORD	DIS. DATA GR. RA. 7	

ISTRUZIONE PER LA STAMPATURA

STANDARD VERSION

DO NOT SCALE
 DIMENSIONI IN mm METRIC
 PROIEZIONE EUROPEA
 EUROPEAN PROJECTION

INTERFACCIA D'ACCOPIAMENTO COUNTERPART



(FINISH / COLOUR)		MATERIALE (MATERIAL)		NUMERO (PART NUMBER)	
CUSTOMER DWG. FOR REFERENCE ONLY		DISEGNO PER CLIENTE SOLO PER RIFERIMENTO			
THIS DRAWING IS UNPUBLISHED					
© COPYRIGHT IS BY AMP INCORPORATED, HARTFORD, PA. ALL INTERNATIONAL RIGHTS RESERVED. AMP PRODUCTS MAY BE COVERED BY U.S. AND FOREIGN PATENT AND/OR PATENT PENDING TOLLERANZE, SE NON DIVERSAMENTE SPECIFICATO					
TOLLERANZE, SE NON DIVERSAMENTE SPECIFICATO		DIAM. ISOLANTE (INS. DIA. RANGE)	RANGO FILO (WIRE RANGE)	SCALA (SCALE)	
± 0.3		-	-	-	
ANGOLI (ANGLES) ± 2°		AMP AMP ITALIA S.p.A. Corso P. LLI Garvi, 18 COLLENO (TORINO)			
DIS. E. CINI S.C. 30 NOV. '82					
CONT. - ZBNOV93 G. TARTARI		DESCRIZIONE (DESCRIPTION)		REV. (REV.)	
		35 P. SPLASH PROOF CONN. with SECONDARY LOCK		A 2	
REV. (REV.)		LOC. (LOC.)	SIZE (SIZE)	NUMERO (PART NO)	FOGLIO (SHEET)
REVISIONI (REVISION RECORD)		DIS. DATA (DATE)	APP. (APP.)	IA3	C-282195

SEE SHEET 1 OF 2

DISTRIBUTION (PRINT DIST.)

A
B
C
D
E

A
B
C
D
E
F

X-ON Electronics

Largest Supplier of Electrical and Electronic Components

Click to view similar products for [Automotive Connectors](#) category:

Click to view products by [TE Connectivity](#) manufacturer:

Other Similar products are found below :

[003-018-000](#) [60403001](#) [60993906-B](#) [M902-2131](#) [M902-2161](#) [72.330.1035.1](#) [73.353.4028.0](#) [F119300-B](#) [F166900](#) [F258300-B](#) [F358300-B](#)
[F407400](#) [F444110](#) [F487000](#) [F509500B-B](#) [827153-1](#) [8N1515-32-24P](#) [9-1326729-8](#) [925474-1](#) [928905-1](#) [964562-4](#) [968782-1](#) [GT17SA-8DS-](#)
[HU](#) [98891-1012](#) [98947-1016](#) [12004147](#) [12004475-L](#) [12010290](#) [12010309-B](#) [12015454](#) [12020219-B](#) [12020308](#) [12041318-B](#) [12052225-L](#)
[12052466](#) [12059125](#) [12064869](#) [12004327-B](#) [12010503-B](#) [12015308](#) [12015384](#) [12015909](#) [1-21030-1](#) [12041254](#) [12041318](#) [12047946-B](#)
[12047957](#) [12047957-L](#) [12059473](#) [12066261](#)