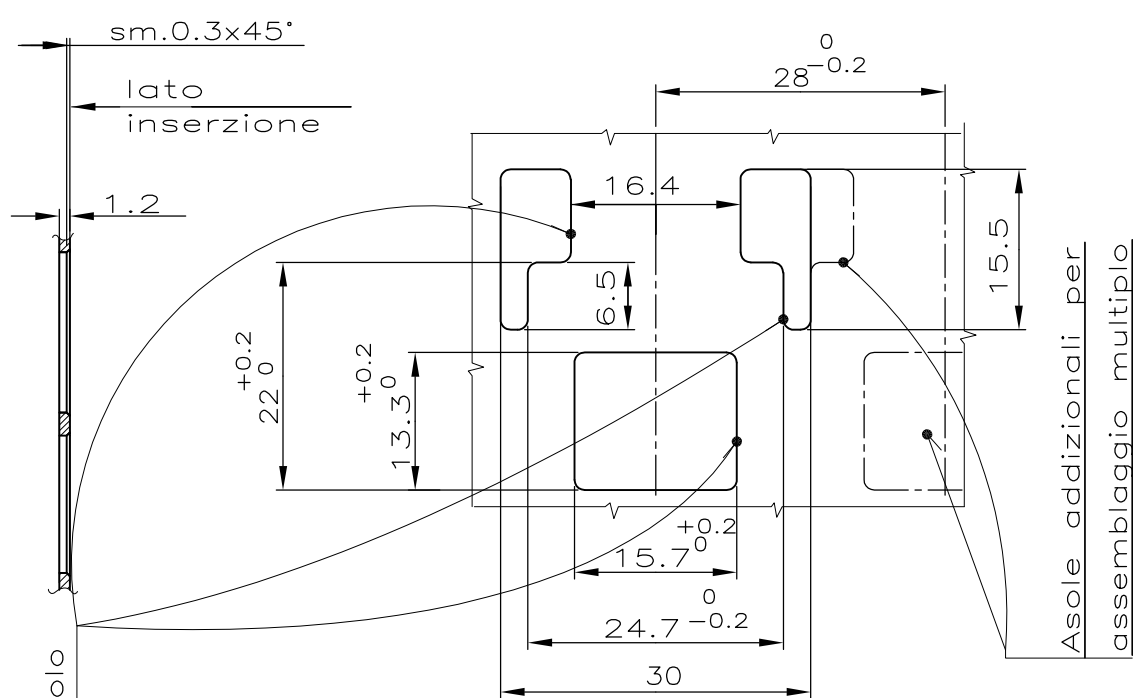


THIS DRAWING IS UNPUBLISHED. RELEASED FOR PUBLICATION
 © COPYRIGHT - By - ALL RIGHTS RESERVED.

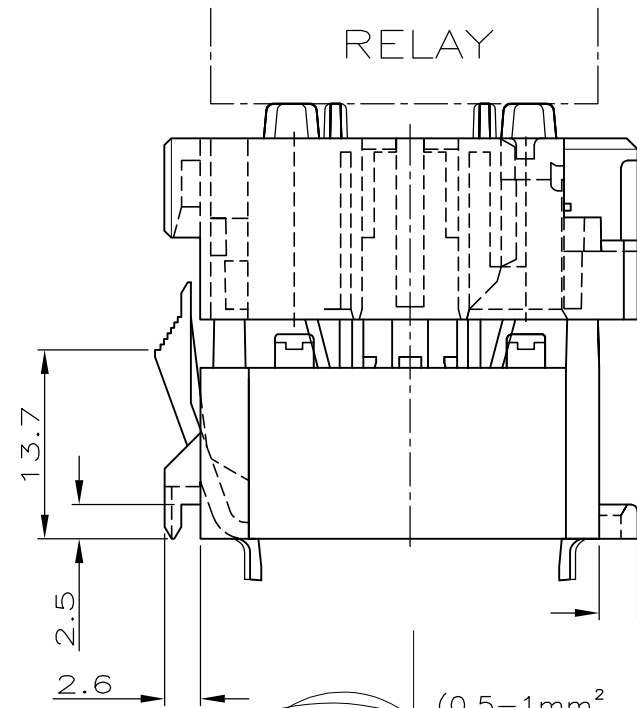
METRIC

REVISED PER ECO-11-005033		DATE	DWN	APVD
P	LTR			
C2		30MAR11	RK	HMR

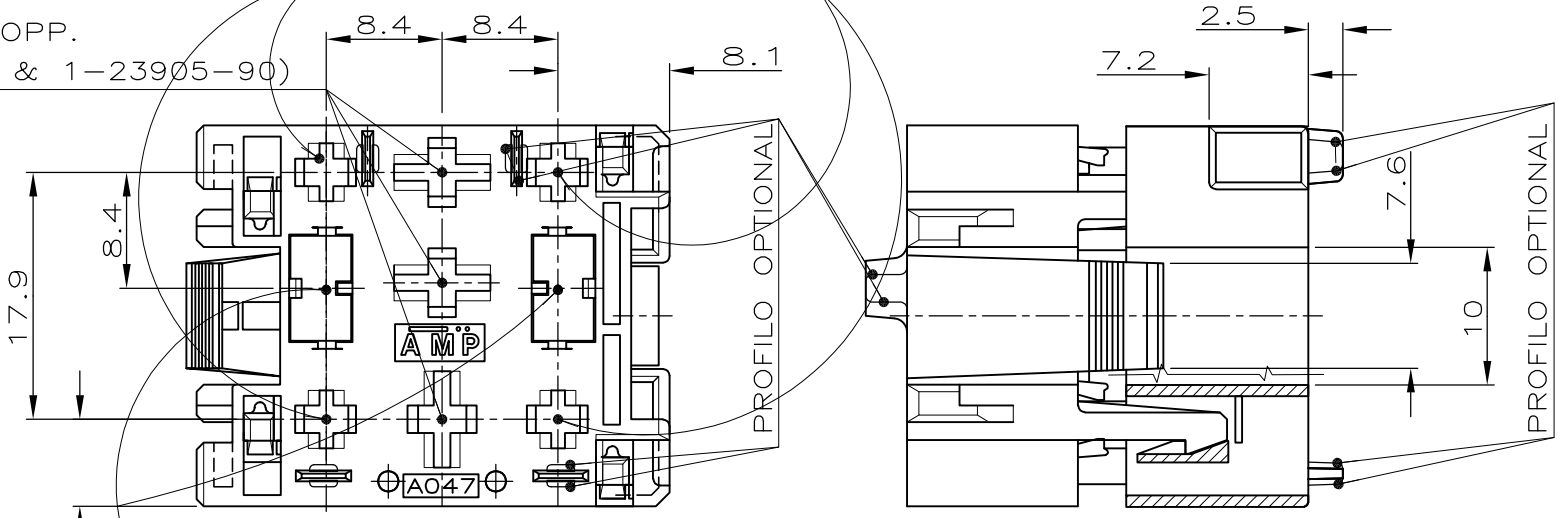
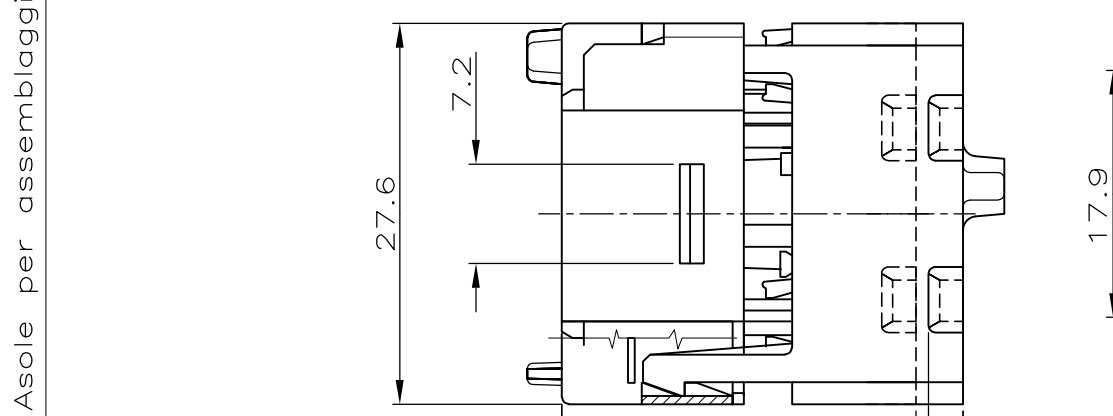
FINITURA / COLORE (FINISH / COLOUR)	MATERIALE (MATERIAL)	NUMERO (PART NUMBER)
ROSA (PINK)	POLYAMIDE 6.6	1-282435-1
ARANCIO (ORANGE)		1-282435-0
VIOLA (VIOLET)		282435-9
GRIGIO (GREY)		282435-8
MARRONE (BROWN)		282435-7
GIALLO (YELLOW)		282435-6
BLU (BLUE)		282435-5
VERDE (GREEN)		282435-4
ROSSO (RED)		282435-3
NERO (BLACK)		282435-2
NATURALE (CLEAR)	282435-1	



N.3 CAVITA' ADATTE PER TERMINALI "AMP STANDARD POWER TIMER" P/N 927831-2 (0.5-1mm²) OPP. P/N 927837-2 (1-2.5mm²) (EQUIVAL. N.FIAT 1-23903-90 & 1-23905-90)

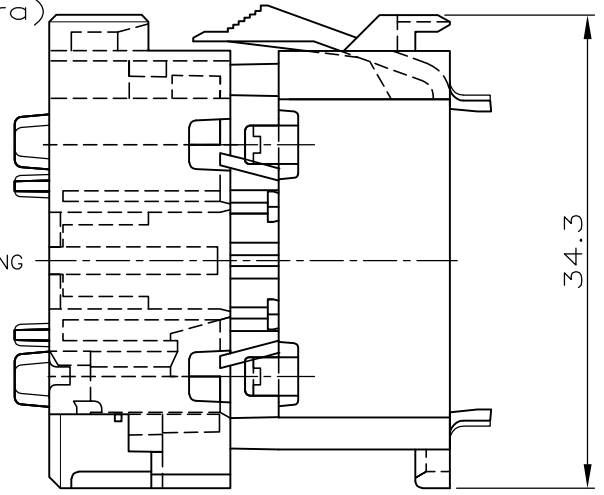


N.4 CAVITA' ADATTE PER TERMINALI "AMP JUNIOR POWER TIMER" P/N: 927771-3 (0.5-1mm² CAVO ISOL.RIDOTTO) (EQUIVAL. N.FIAT 1-23085-90)



N.2 CAVITA' ADATTE PER TERMINALI "AMP POSITIVE LOCK MKI" P/N 160759-3(0.5-1.5 mm²) OPP. P/N 154717-3 (2.5-4.0mm²) EQUIVALENTE N.FIAT 1-23364-44 & 1-23363-44; E TERMINALI AMP P/N 282167 PER ISOL. RIDOTTO (0.5-1.5mm²)

1 OBSOLETE PARTS: OBSOLETE CIS STREAMLINING PER D.RENAUD/D.SINISI



CUSTOMER DWG. FOR REFERENCE ONLY		DISEGNO PER CLIENTE SOLO PER RIFERIMENTO		FINITURA / COLORE (FINISH / COLOUR)	MATERIALE (MATERIAL)	NUMERO (PART NUMBER)
THIS DRAWING IS A CONTROLLED DOCUMENT.				DWN 10 JULY 1992 C.IANNARELLI	TE Connectivity	
				CHK 16 OCT.1992 C.TARTARI	9 POSITION RELAY HSG.WITH SEC.LOCK	
DIMENSIONS: mm				APVD -	NAME	
TOLERANCES UNLESS OTHERWISE SPECIFIED:				PRODUCT SPEC -	APPLICATION SPEC -	
0 PLC ± -				SIZE A3		
1 PLC ± 0.3				CAGE CODE 00779		
2 PLC ± -				DRAWING NO C=282435		
3 PLC ± -				RESTRICTED TO -		
4 PLC ± -				SCALE 2:1		
ANGLES ± 2°				SHEET 1 OF 1		
DIAM. ISOLANTE (INS. DIA. RANGE)		RANGO FILO (WIRE RANGE)		WEIGHT -		REV C2
-		-		CUSTOMER DRAWING		

X-ON Electronics

Largest Supplier of Electrical and Electronic Components

Click to view similar products for [Automotive Connectors](#) category:

Click to view products by [TE Connectivity](#) manufacturer:

Other Similar products are found below :

[003-018-000](#) [60403001](#) [60993906-B](#) [M902-2131](#) [M902-2161](#) [72.330.1035.1](#) [73.353.4028.0](#) [F119300-B](#) [F166900](#) [F258300-B](#) [F358300-B](#)
[F407400](#) [F444110](#) [F487000](#) [F509500B-B](#) [827153-1](#) [8N1515-32-24P](#) [9-1326729-8](#) [925474-1](#) [928905-1](#) [964562-4](#) [968782-1](#) [GT17SA-8DS-](#)
[HU](#) [98891-1012](#) [98947-1016](#) [12004147](#) [12004475-L](#) [12010290](#) [12010309-B](#) [12015454](#) [12020219-B](#) [12020308](#) [12041318-B](#) [12052225-L](#)
[12052466](#) [12059125](#) [12064869](#) [12004327-B](#) [12010503-B](#) [12015308](#) [12015384](#) [12015909](#) [1-21030-1](#) [12041254](#) [12041318](#) [12047946-B](#)
[12047957](#) [12047957-L](#) [12059473](#) [12066261](#)