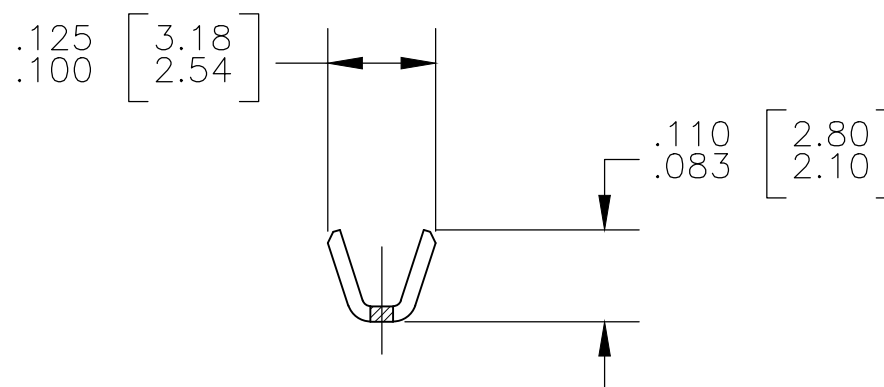
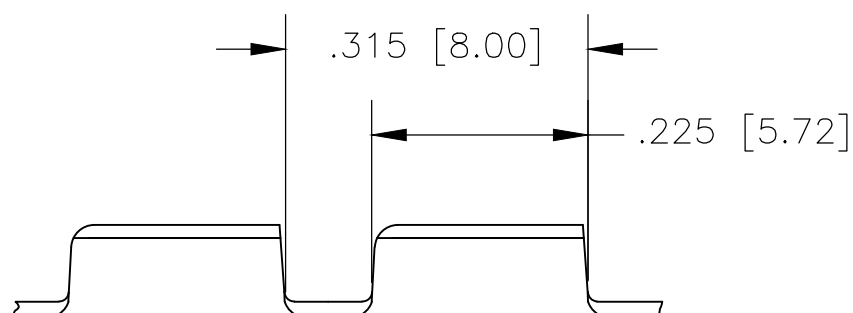
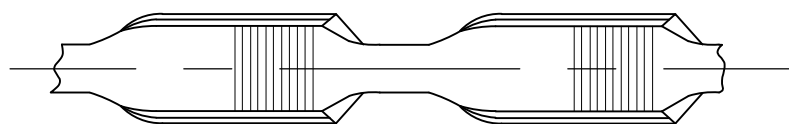


REVISIONS

P	LTR	DESCRIPTION	DATE	DWN	APVD
	B1	PRODUCT DESCRIPTION UPDATED	30JUL2020	MB	TD



- 1 PRODUCT SUPPLIED IN STRIP FORM ON REELS  
BREAKS MAY BE PRESENT
- 2 DIMENSIONS IN BRACKETS ARE IN MM
- 3 CMA RANGE: 400-1500
- 4 CRIMP WIDTH: .080 F(AMPLIVAR TYPE)  
CRIMP HEIGHT ( $\pm 0.002$ ) = (TOTAL CMA +5320)/139,200  
GENERAL APPLICATION GUIDELINES MUST BE  
FOLLOWED AS SPECIFIED IN CATALOG #  
FOR APPLICATOR INFORMATION CALL: 1-800-722-1111  
FOR PRODUCT INFORMATION CALL: 1-800-522-6752
- 5 USE WITH ALUMINIUM OR COPPER MAGNET WIRE  
IN COMBINATION WITH STRANDED COPPER LEAD WIRE.

5	TIN PLATED	.016[0.41] BRASS	2825180-2
No. of Serrations	Finish	Material	Part Number

THIS DRAWING IS A CONTROLLED DOCUMENT.		DWN SENTHIL 28JAN2016	<b>TE Connectivity</b>	
		CHK SENTHIL 28JAN2016		
		APVD RAJENDRA 28JAN2016		
DIMENSIONS: INCHES 		TOLERANCES UNLESS OTHERWISE SPECIFIED: 0 PLC ± - 1 PLC ± - 2 PLC ± - 3 PLC ± .005 4 PLC ± - ANGLES ± 2'0"		NAME <b>AMPLIVAR SPLICE</b> <b>5 SERRATIONS</b>
MATERIAL SEE TABLE		FINISH SEE TABLE		PRODUCT SPEC <b>108-64051</b> APPLICATION SPEC <b>114-64001</b> WEIGHT -
		SIZE A3	CAGE CODE 00779	DRAWING NO <b>C-2825180</b> RESTRICTED TO -
CUSTOMER DRAWING			SCALE 5:1	SHEET 1 OF 1 REV B1

## X-ON Electronics

Largest Supplier of Electrical and Electronic Components

*Click to view similar products for [Terminals](#) category:*

*Click to view products by [TE Connectivity](#) manufacturer:*

Other Similar products are found below :

[00-054007-01074-6](#) [00-054007-70206-1](#) [00-054007-70210-8](#) [00-054007-70217-7](#) [00-054007-70226-9](#) [00-054007-70228-3](#) [00-054007-70248-1](#) [00-054007-70256-6](#) [00-054007-70301-3](#) [00-054007-70316-7](#) [00-054007-49560-4](#) [00-054007-70209-2](#) [00-054007-70225-2](#) [00-054007-70227-6](#) [00-054007-70231-3](#) [00-054007-70241-2](#) [00-054007-70242-9](#) [00-054007-70244-3](#) [00-054007-70246-7](#) [00-054007-70263-4](#) [00-054007-70288-7](#) [00-054007-70290-0](#) [00-054007-70300-6](#) [00-054007-70304-4](#) [01-2065-1-0216](#) [01-2900-1-04412](#) [00581P0075](#) [600TS-10](#) [60205-1](#) [604200-1](#) [605601-1](#) [60598-1-CUT-TAPE](#) [61314-6-C](#) [61810-3](#) [61-S](#) [61-SN](#) [626-0194](#) [62-NBM-A](#) [62-SN](#) [62-SP](#) [63-S](#) [640179-1](#) [M55155/059I03](#) [M55155/079C01](#) [M55155/099H02](#) [M55155/109H01](#) [M55155/109H02](#) [M55155/12XH05](#) [M55155/16XH02](#) [M55155/29-5S](#)