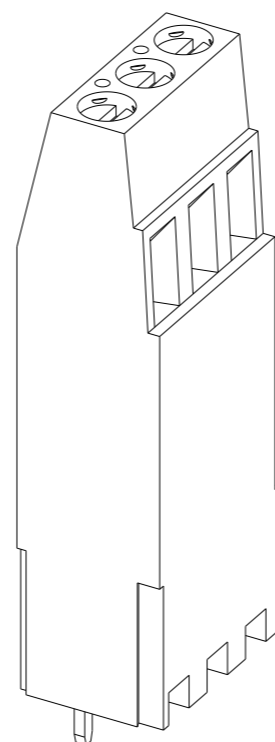
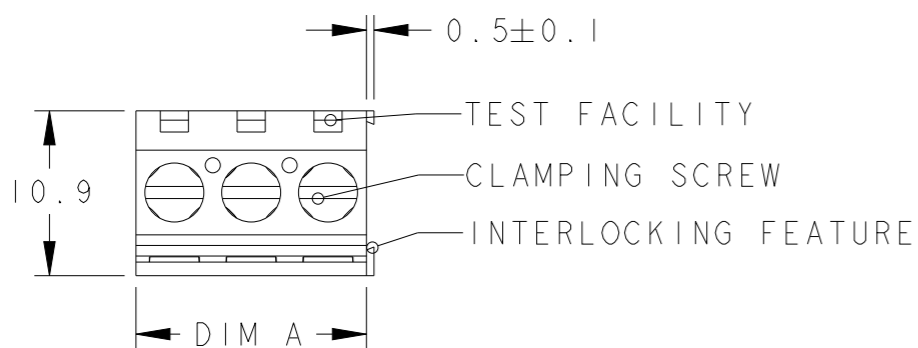
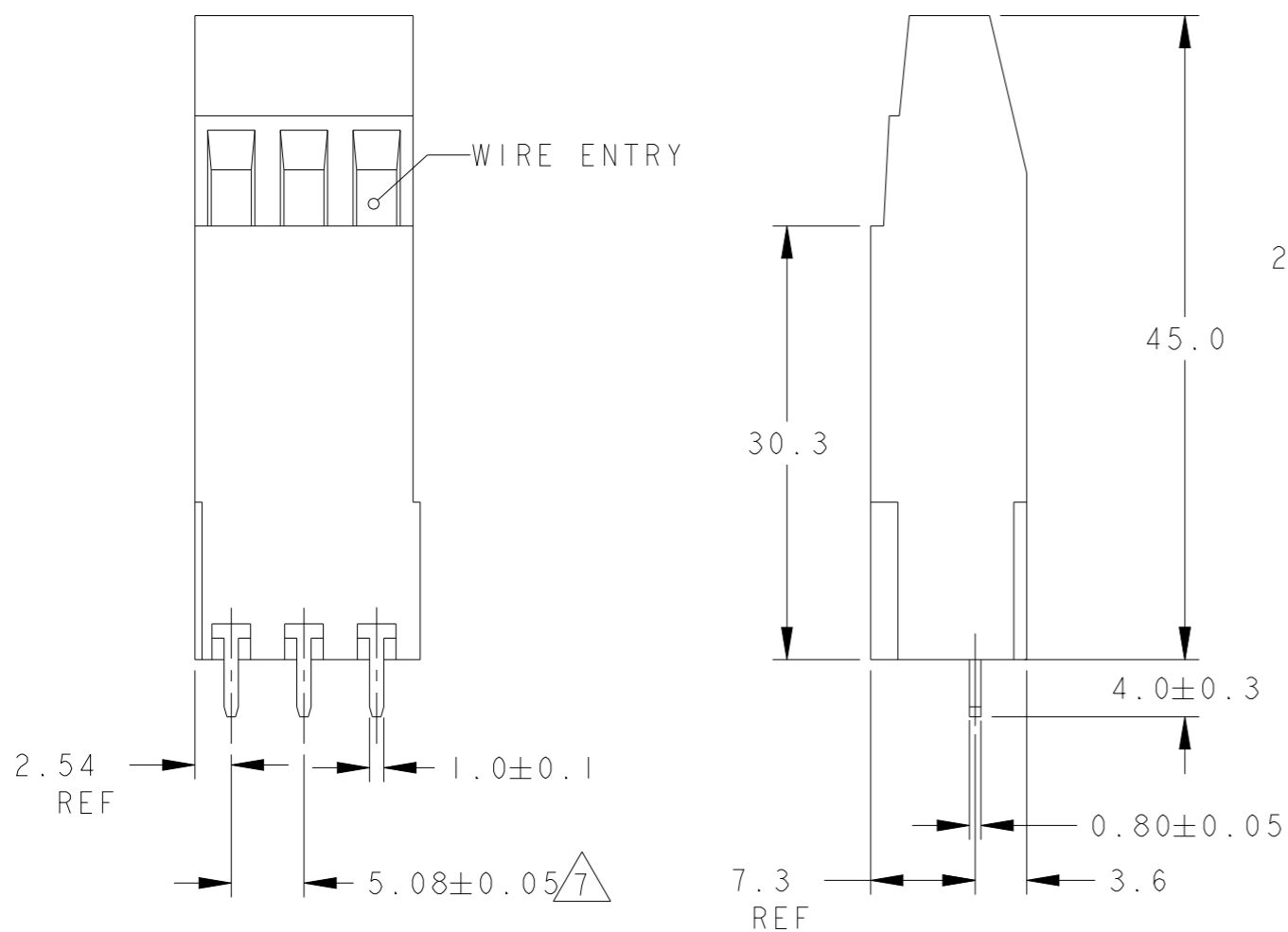


REVISIONS

P	LTR	DESCRIPTION	DATE	DWN	APVD
	C9	HOUSING COLOR ADDED	03OCT2019	RK	PS
	C10	PART OBSOLETE	02AUG2021	GMN	PS

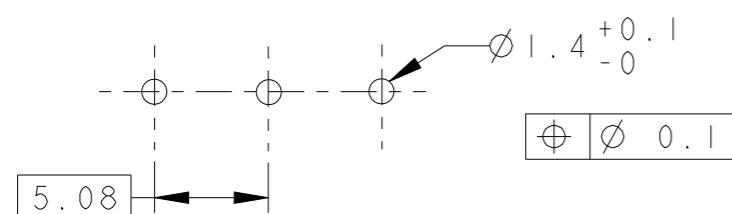


282925-3 AS SHOWN



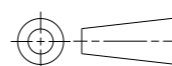
9	SEE DETAIL F	60.96	12	2-282925-3
9	SEE DETAIL E	76.20	15	2-282925-2
12/10/9	SEE DETAIL D	106.68	21	2-282925-1
12/10/9	SEE DETAIL C	76.20	15	1-282925-5
12/9	SEE DETAIL B	60.96	12	1-282925-2
8/7	OBSOLETE	828.04	163	1-282925-0
	OBSOLETE	15.24	3	282925-3
	OBSOLETE	10.16	2	282925-2
	DIM.A		NO OF POS.	PART NUMBER

RECOMMENDED PC BOARD LAYOUT



THIS DRAWING IS A CONTROLLED DOCUMENT.

DIMENSIONS: mm



MATERIAL SEE NOTES

TOLERANCES UNLESS OTHERWISE SPECIFIED:

- 0 PLC ±
- 1 PLC ±0.3
- 2 PLC ±0.25
- 3 PLC ±
- 4 PLC ±
- ANGLES ±2°

FINISH SEE NOTES

DWN 09NOV2001

E. ZANOLINI

CHK 09NOV2001

D. BIEVENOUR

APVD 09NOV2001

D. BIEVENOUR

PRODUCT SPEC

APPLICATION SPEC

WEIGHT

CUSTOMER DRAWING

NAME
STE TE Connectivity
 TERMINAL BLOCK, PCB MOUNT
 3RD LEVEL, STACKING W/INTERLOCK,
 5.08mm PITCH

SIZE	CAGE CODE	DRAWING NO	RESTRICTED TO
A3	00779	C-282925	-

SCALE 2:1 SHEET 1 OF 4 REV C10

4

3

2

1

THIS DRAWING IS UNPUBLISHED.

RELEASED FOR PUBLICATION

20

© COPYRIGHT 20

BY -

ALL RIGHTS RESERVED.

REVISIONS

P	LTR	DESCRIPTION	DATE	DWN	APVD
	-	SEE SHEET 1	-	-	-

DETAIL D
SCALE 2:1

DETAIL C
SCALE 2:1

DETAIL B
SCALE 2:1

THIS DRAWING IS A CONTROLLED DOCUMENT.

DIMENSIONS:
mm

TOLERANCES UNLESS
OTHERWISE SPECIFIED:

0 PLC	±	0.3
1 PLC	±	0.3
2 PLC	±	0.25
3 PLC	±	
4 PLC	±	
ANGLES	±	2°

MATERIAL
SEE NOTES

FINISH
SEE NOTES

DWN 09NOV2001

E. ZANOLINI

CHK 09NOV2001

D. BIEVENOUR

APVD 09NOV2001

D. BIEVENOUR

PRODUCT SPEC

-

APPLICATION SPEC

-

WEIGHT

-

CUSTOMER DRAWING

TE Connectivity

NAME
TERMINAL BLOCK, PCB MOUNT
3RD LEVEL, STACKING W/INTERLOCK,
5.08mm PITCH

SIZE CAGE CODE DRAWING NO

A300779 C-282925

RESTRICTED TO

-

SCALE 2:1

SHEET 2 OF 4

REV C10

1470-19 (3/13)

THIS DRAWING IS UNPUBLISHED.

RELEASED FOR PUBLICATION

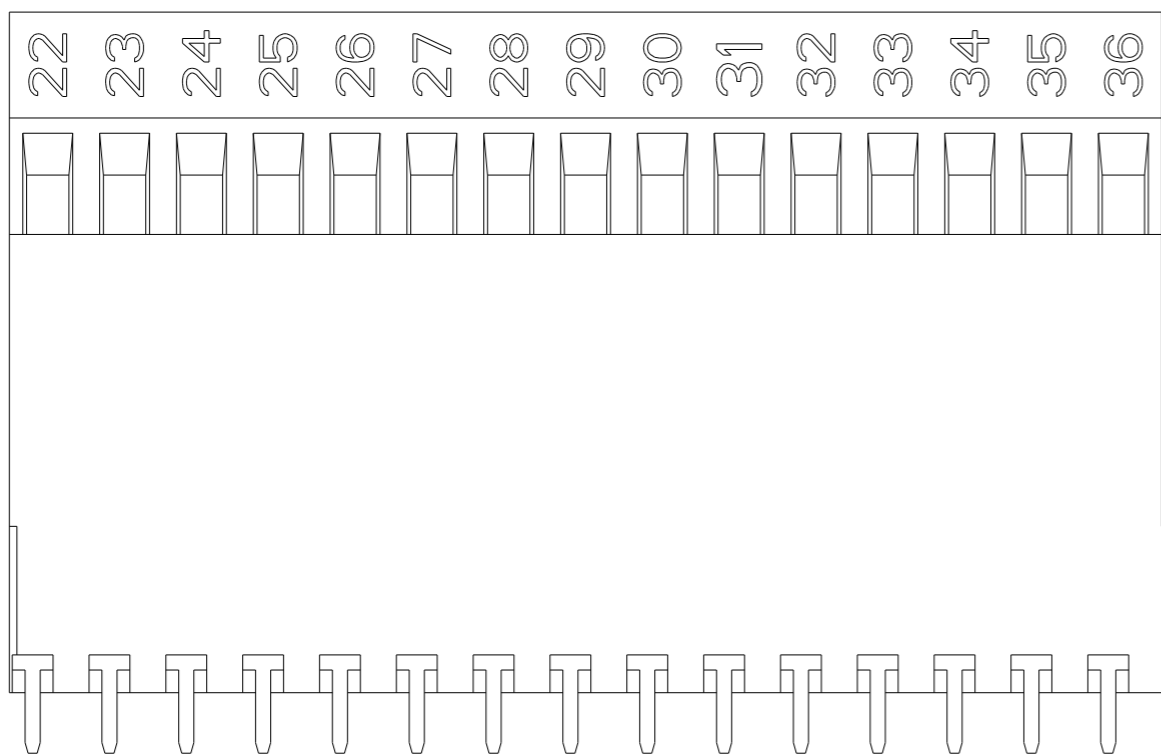
20

© COPYRIGHT 20 BY -

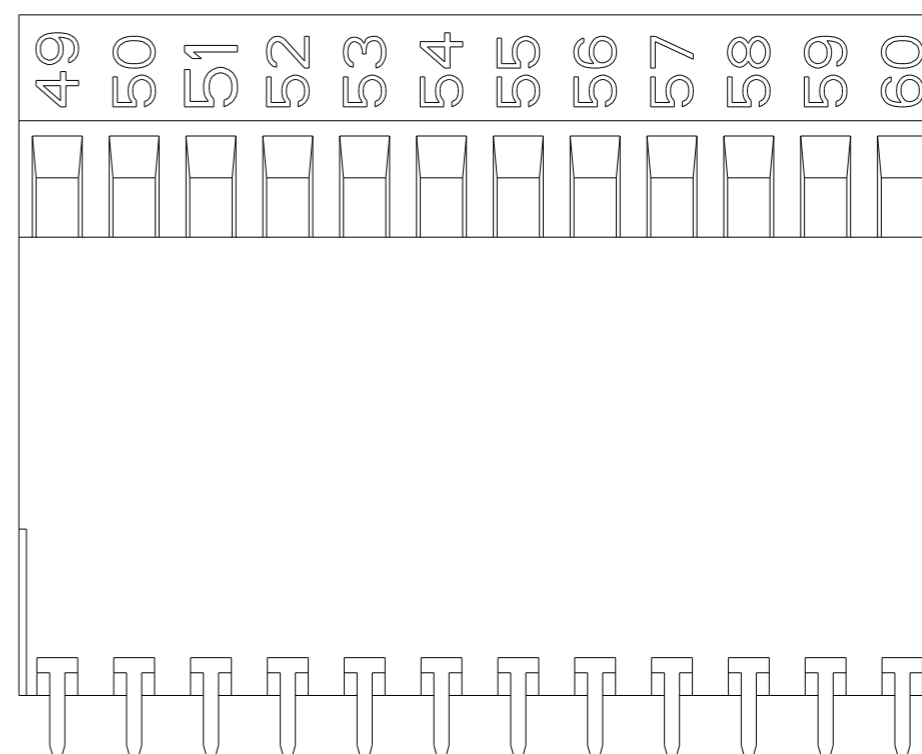
ALL RIGHTS RESERVED.

REVISIONS

P	LTR	DESCRIPTION	DATE	DWN	APVD
-	-	SEE SHEET 1	-	-	-



DETAIL E
SCALE 2:1



DETAIL F
SCALE 2:1

THIS DRAWING IS A CONTROLLED DOCUMENT.

DIMENSIONS:	TOLERANCES UNLESS OTHERWISE SPECIFIED:
mm	0 PLC ±
	1 PLC ±0.3
	2 PLC ±0.25
	3 PLC ±
	4 PLC ±
	ANGLES ±2°

MATERIAL
SEE NOTES

FINISH
SEE NOTES

DWN 09NOV2001
E. ZANOLINI

CHK 09NOV2001
D. BIEVENOUR


APVD 09NOV2001
D. BIEVENOUR

PRODUCT SPEC

APPLICATION SPEC

WEIGHT

CUSTOMER DRAWING

 TE Connectivity		NAME		RESTRICTED TO
		TERMINAL BLOCK, PCB MOUNT 3RD LEVEL, STACKING W/INTERLOCK, 5.08mm PITCH		
SIZE	CAGE CODE	DRAWING NO		
A3	00779	C-282925		
SCALE 2:1		SHEET 3 OF 4	REV C10	

THIS DRAWING IS UNPUBLISHED.

RELEASED FOR PUBLICATION

20

© COPYRIGHT 20

BY -

ALL RIGHTS RESERVED.

REVISIONS

P	LTR	DESCRIPTION	DATE	DWN	APVD
-	-	SEE SHEET 1	-	-	-

- 1. MATERIALS AND FINISH
HOUSING: PA 66, UL 94-V0, COLOR: GREEN.
CLAMP: BRASS, NICKEL PLATED.
TERMINAL: BRASS, TIN PLATED.
CLAMPING SCREW: M3, BRASS, NICKEL PLATED.
- 2. MECHANICAL:
RECOMENDED TIGHTENING TORQUE : 0.5Nm
WIRE STRIPPING LENGTH : 6.5-7.0mm
MIN. PC BOARD HOLES DIAMETER : 1.4mm
MAX. PC BOARD THICKNESS : 2.4mm
- 3. ELECTRICAL
WIRE RANGE : 16-30 AWG
MAX. VOLTAGE : 300 V
MAX CURRENT : 24 A
CONTACT RESISTANCE : < 15 m Ohm
INSULATION RESISTANCE : > 1000 M Ohm (500V DC)

4. OPERATING TEMPERATURE RANGE: -40C TO +105C.

5. RECOGNIZED UNDER THE COMPONENT PROGRAM OF UNDERWRITERS LABORATORIES INC., FILE NO E60677

6 NOT CUMULATIVE TOLERANCE.

7 P/N 1-282925-0 IS A KIT PACKAGE COMPRISED OF THE FOLLOWING:(3) OF 25 POS. GLUED ASSEMBLIES AND (4) OF 22 POS. GLUED ASSEMBLIES. EACH GLUED ASSEMBLY IS PACKAGED SEPERATLY IN A UNIT BOX.


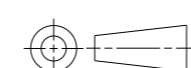
8 INK MARKING, BLACK COLOR. NUMERICAL SEQUENCE: FROM LEFT TO RIGHT FOR EACH GLUED ASSEMBLY.

9 INK MARKING, BLACK COLOR. SEE DETAIL FOR MARKING.

10 PARTS TO BE SHIPPED WITH CAGES IN THE CLOSED POSITION WITH SCREW TORQUE TO 3 IN-16s MIN.

11 DELETED

12 SECTION GLUED USING CYANOLIT 241F OR TE ENGINEERING APPROVED EQUIVALENT.

THIS DRAWING IS A CONTROLLED DOCUMENT.		DWN E. ZANOLINI 09NOV2001	 TE Connectivity		
DIMENSIONS: mm		CHK D. BIEVENOUR 09NOV2001			
TOLERANCES UNLESS OTHERWISE SPECIFIED:		APVD D. BIEVENOUR 09NOV2001	NAME TERMINAL BLOCK, PCB MOUNT 3RD LEVEL, STACKING W/INTERLOCK, 5.08mm PITCH		
		PRODUCT SPEC -	RESTRICTED TO -		
0 PLC ± 1 PLC ±0.3 2 PLC ±0.25 3 PLC ± 4 PLC ± ANGLES ±2°		APPLICATION SPEC -	SIZE A300779	CAGE CODE C-282925	DRAWING NO
MATERIAL SEE NOTES	FINISH SEE NOTES	WEIGHT -	SCALE 2:1 SHEET 4 OF 4 REV C10		
		CUSTOMER DRAWING			

X-ON Electronics

Largest Supplier of Electrical and Electronic Components

Click to view similar products for [Fixed Terminal Blocks](#) category:

Click to view products by [TE Connectivity](#) manufacturer:

Other Similar products are found below :

[MBE-1512](#) [MBE-154](#) [MBE-156](#) [MBES-153](#) [MBES-156](#) [MH-2512](#) [MHE-132](#) [MHE-163](#) [MI-254 \(35\)](#) [MI-272](#) [880507](#) [MPT-275](#)
[15602-04-08-21](#) [ELM023100](#) [BA311TU](#) [BA411SU](#) [MV-152](#) [MV-252-D](#) [MV-253/NCNOC](#) [MV-254-D](#) [MV-255](#) [MV-462](#) [MV-493](#) [MVE-](#)
[253](#) [MVE-273](#) [MVEB-153](#) [1700096](#) [1705142](#) [1712417](#) [1713020](#) [1713088](#) [1745195](#) [1760594](#) [1776118-2](#) [1790852](#) [1-796689-8](#) [1-796692-6](#)
[1800001](#) [1800114](#) [1995279](#) [20020314-C121B01LF](#) [CB2-12](#) [KP03215000J0G](#) [KP04215000J0G](#) [S451](#) [282802-2](#) [29.007](#) [29.116](#) [30.103](#)
[30.106](#)