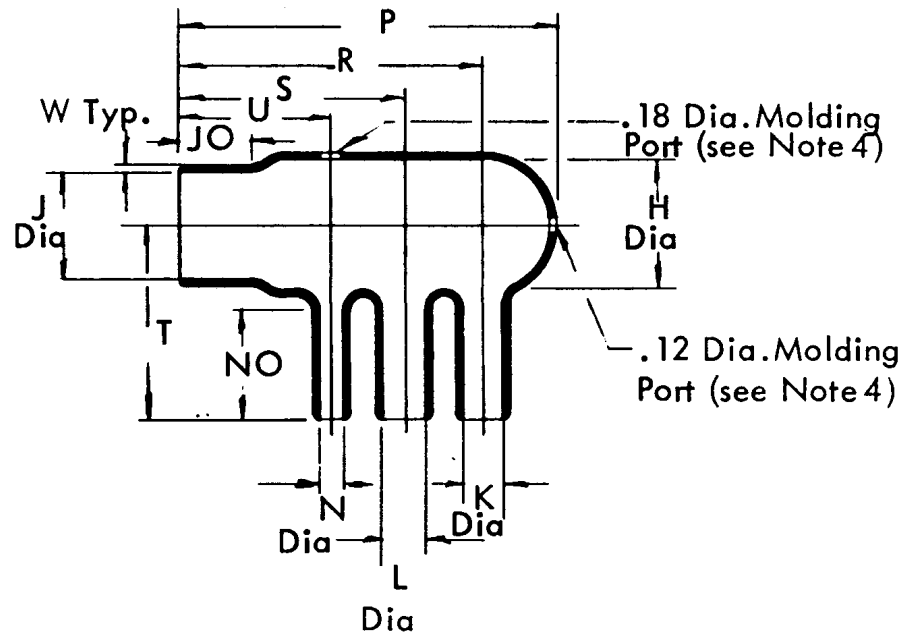


**THERMOFIT • SPECIFICATION CONTROL DRAWING • MOLDED PARTS**

1. All dimensions are in inches; all angles are in degrees.  
 2. Dimensions appearing in table below are as follows:  
 a - As supplied      b - After unrestricted recovery  
 3. Weight shown in table of dimensions is based on polyolefin part.  
 4. Molding ports are optional. When specified, they will be located as shown. Order 423A117-3-00 when molding ports are required.

NOTES




Matl No.	Description	Rayclad Matl. Spec.	Specific Grav. Max.
3	Polyolefin	RT-301	1.40
5	Neoprene	RT-501	1.50

Add material number as suffix to part number;  
 Example - Order 423A117-3 when polyolefin is required.

**TABLE OF DIMENSIONS**

PART NO.	H		J		K and L		N		P		R		S		T		U		NO	
	Min a	±5% b	Min a	Max b	Min a	Max b	Min a	Max b	a	±10% b	a	±10% b	a	±10% b	a	±10% b	a	±10% b	a	±10% b
423A117-3	1.30	1.19	1.30	1.09	.60	.41	.40	.23	-	3.65	-	2.79	-	2.05	-	1.80	-	1.38	-	1.00
423A117-5	1.30	1.19	1.30	1.19	.60	.45	.40	.25	-	3.65	-	2.79	-	2.05	-	1.80	-	1.38	-	1.00
PART NO.	JO		W																	
	a	±10% b	a	±20% b																
423A117-3	-	.62	-	.07																
423A117-5	-	.62	-	.07																

 RAYCLAD TUBES INCORPORATED A SUBSIDIARY OF <b>RAYCHEM CORPORATION</b>	EO	REV	DATE	DESCRIPTION	DRN	DLD	PART DESCRIPTION  <b>BOOT, 4 ENTRY</b>	PART NO.	REV LTR
					CHK D	KT		<b>423A117</b>	
					AUTH	RW		DATE	June 15, 1967
					AUTH	HP			

## X-ON Electronics

Largest Supplier of Electrical and Electronic Components

*Click to view similar products for [Heat Shrink Cable Boots & End Caps](#) category:*

*Click to view products by [TE Connectivity](#) manufacturer:*

Other Similar products are found below :

[577159N001](#) [645494-000](#) [CX4132-000](#) [687025-000](#) [705331-000](#) [718446-000](#) [725666N001](#) [729257-000](#) [F27131-000](#) [F85868-000](#) [770-003S106W2](#) [770-013210W1](#) [770-013311](#) [770-013312](#) [806542N001](#) [807507-000](#) [808362-000](#) [808618-000](#) [809125-000](#) [809130-000](#) [809218-000](#) [812014-000](#) [812047-000](#) [813166-000](#) [813767N002](#) [814741-000](#) [819117N001](#) [823026-000](#) [823070-000](#) [841189N001](#) [861471-000](#) [866647-000](#) [879515-000](#) [937577-000](#) [957073-000](#) [982033-2](#) [A77813-000](#) [R280576000](#) [D96192-000](#) [163549-000](#) [EN3BOOTLKIT](#) [MTPSRBCL-C](#) [1954015-1](#) [200W531-3-0](#) [202A163-4-0-CS5067](#) [202A343-3-00-0](#) [202B221-13-0](#) [202B231-13-0](#) [202B563-25-07-0](#) [202C241-13-0](#)