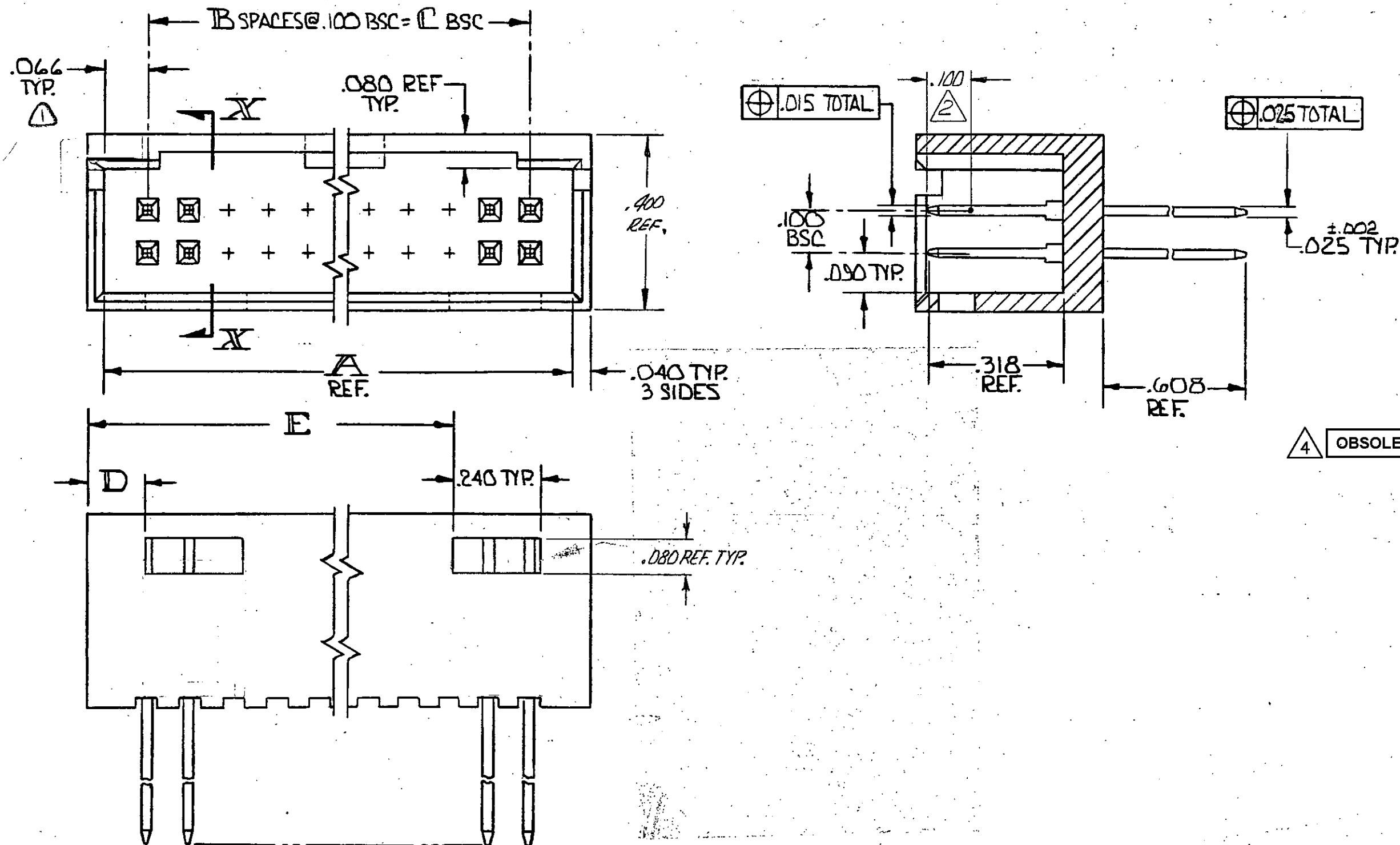
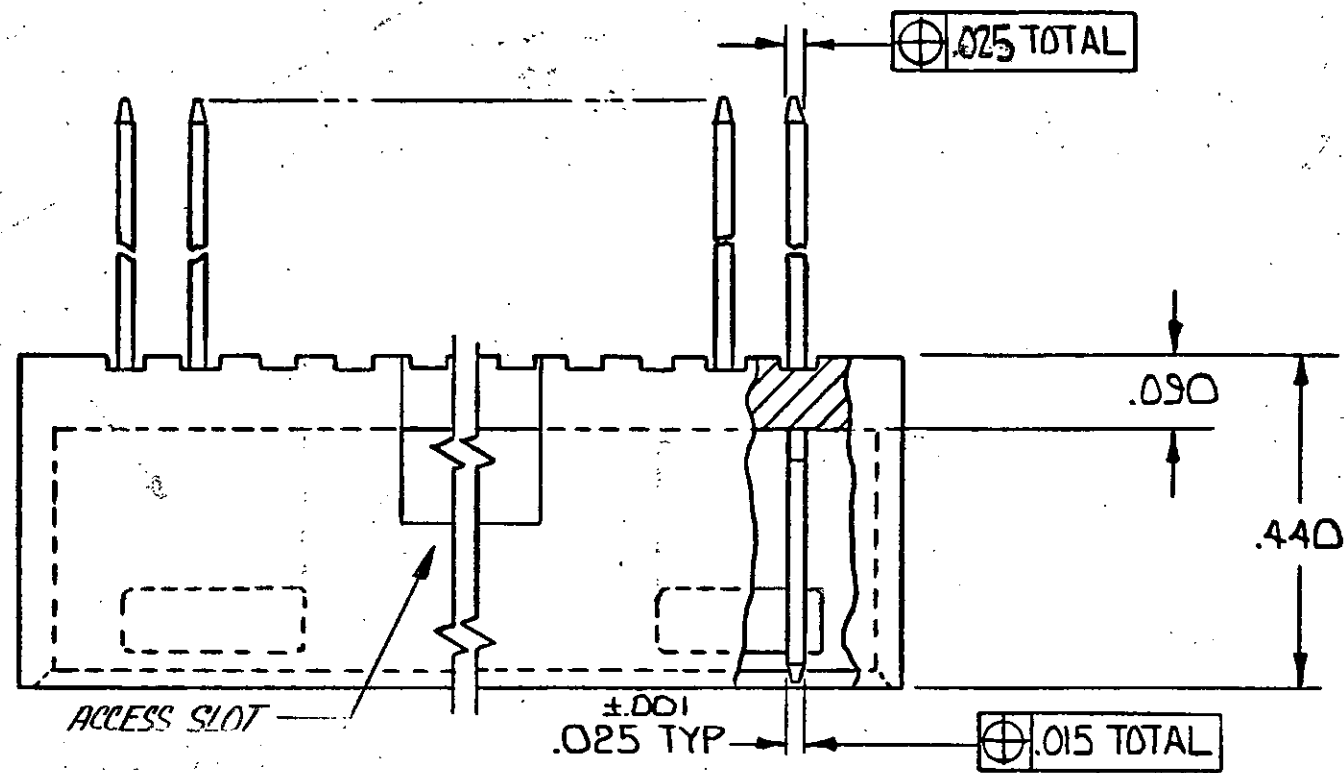


© COPYRIGHT 1975-83 BY AMP INCORPORATED, HARRISBURG, PA.
 ALL INTERNATIONAL RIGHTS RESERVED. AMP INCORPORATED PRODUCTS
 COVERED BY U. S. AND FOREIGN PATENTS AND/OR PATENTS PENDING.

REVISIONS					
P	F	ZONE	LTR	DESCRIPTION	DATE APPROVED
			0		
			01	ADDED ADDTE 1 AND TITLE BLDX. COMMENT	12-23-75 DM ECO 1232
			02	REV. T.P. WAS .015 ECN-1270 BAW	1-27-76 DM
			03	ADDED MTE. HOLE PATTERN ECN-1309 BAW	2-13-76 DM
			04	.090 DIA. WAS .045 DIA. ECN 1328 DM	2-27-76 DM
			05	ADDED ADDRESS SLOT ECN 1502 TB	1-25-78 DM
			06	REV. PER ECN 4620 db	2-25-83 RP
			A	REV-ECN 179 Nam	5-8-84 DM
			B	REV-ECN AR 2295 SB	4-11-89 DM
			C	REV LDC & DIST AD-4171	11-27-89 BF
			D	ECN AD-4707 KIH	8-23-92 QLG
			E	REV PER .0010-0981-93 RAC	9-93 MA
			F	EC. 0010-0988-93 T.H.	1-25-96 RAC
			G	REV PER 0010-0713-96 E.C.	17JAN97 SAS
			H	REV PER 0310-0146-96 EB	2-27-97 SAS
			HI	REVISED PER ECO-09-026346	NOV09 AEG



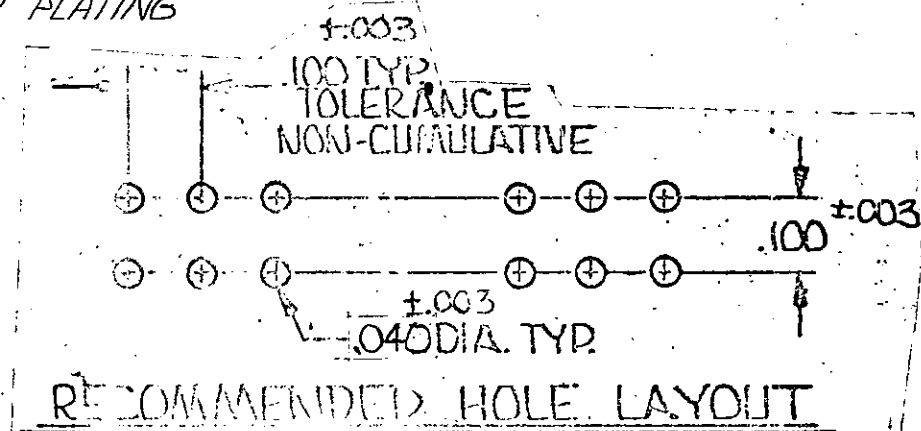
3.506	.106	3.600	36	3.732	74	3-A87592-3
3.406		3.500	35	3.632	72	3-A
3.306		3.400	34	3.532	70	3-A
3.206		3.300	33	3.432	68	3-A
3.106		3.200	32	3.332	66	2-A
3.006		3.100	31	3.232	64	2-A
2.906		3.000	30	3.132	62	2-A
2.806		2.900	29	3.032	60	2-A
2.706		2.800	28	2.932	58	2-A
2.606		2.700	27	2.832	56	2-A
2.506		2.600	26	2.732	54	2-A
2.406		2.500	25	2.632	52	2-A
2.306		2.400	24	2.532	50	2-A
2.206		2.300	23	2.432	48	2-A
2.106		2.200	22	2.332	46	1-A
2.006		2.100	21	2.232	44	1-A
1.906		2.000	20	2.132	42	1-A
1.806		1.900	19	2.032	40	1-A
1.706		1.800	18	1.932	38	1-A
1.606		1.700	17	1.832	36	1-A
1.506		1.600	16	1.732	34	1-A
1.406		1.500	15	1.632	32	1-A
1.306		1.400	14	1.532	30	1-A
1.206		1.300	13	1.432	28	1-A
1.106		1.200	12	1.332	26	1-A
1.006		1.100	11	1.232	24	1-A
.906		1.000	10	1.132	22	1-A
.806	.106	.900	9	1.032	20	1-A
---	.406	.800	8	.932	18	1-A
---	.306	.700	7	.832	16	1-A
---	.306	.600	6	.732	14	1-A
---	.206	.500	5	.632	12	1-A
---	.206	.400	4	.532	10	1-A

1 WILL ALSO MATE W/OTHER CONNECTORS WHICH ARE COMPATIBLE WITH THE .066 END DIM.

2 POINT OF MEASUREMENT FOR PLATING THICKNESS.

3 OBSOLETE

4 OBSOLETE PARTS. OBSOLETE CIS STREAMLINING PER D.RENAUD/D.SINISI



UNLESS OTHERWISE SPECIFIED DIMENSIONS ARE IN INCHES. TOLERANCES ON: DECIMALS ±.005 ANGLES ±.005		CONTRACT NO		AMP INCORPORATED Harrisburg, Pa.	
MATERIAL HSG. - GLASS FILLED NYLON COLOR: BLACK CONTACT - PHOS. BRONZE		DR D. Menn 9/12/75		NAME (MATES WITH MOD II OR LOCKING CLIP 1) HEADER ASSEMBLY MOD II .100 & .025 SQUARE POST WITH DETENT	
FINISH CONTACT - 000030 GOLD OVER .00050 NICKEL		CHK D. Menn 9-12-75		NO. OF POS. PART NO	
APPD L. Bennett 9-15-75		APPD C. Laciniski 9/16/75		SIZE CODE IDENT NO DRAWING NO	
DSGN APPD		OTHER APPD		C 00779 87592	
SCALE		SHEET 1 of 1			

X-ON Electronics

Largest Supplier of Electrical and Electronic Components

Click to view similar products for [Headers & Wire Housings](#) category:

Click to view products by [TE Connectivity](#) manufacturer:

Other Similar products are found below :

[95000-104TRLF](#) [10135584-644402LF](#) [DF62W-EP2022PCA](#) [95000-106TRLF](#) [DF62W-2022SCA](#) [DF62W-EP2022PC](#) [2203348](#) [DF62W-2022SC](#) [1084018](#) [1029039](#) [1084017](#) [802-10-012-10-002000](#) [1112640](#) [1112639](#) [000-34000](#) [0009482033](#) [0009507031](#) [57102-S06-03LF](#) [57202-S52-04LF](#) [PCN6-15S-2.5E](#) [0039019024](#) [58102-G61-06LF](#) [582553-1](#) [0009508121](#) [0050291907](#) [018731A](#) [LY20-4P-DT1-P1E-BR](#) [02.125.8002.8](#) [60101931](#) [60598-1 \(Cut Strip\)](#) [M1625-3R/100](#) [61062-3](#) [61082-181009](#) [636-1427](#) [638009-1](#) [641938-9](#) [641991-4](#) [644168-1](#) [647662-1](#) [65039-019ELF](#) [65817-002LF](#) [65817-015LF](#) [65863-015LF](#) [66207-023LF](#) [67016-026LF](#) [67046-001LF](#) [67095-007LF](#) [68002-116](#) [68016-236H](#) [68648-049](#)