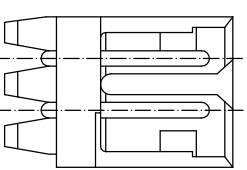
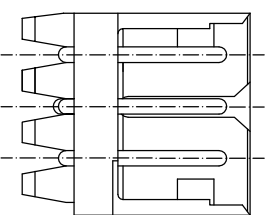
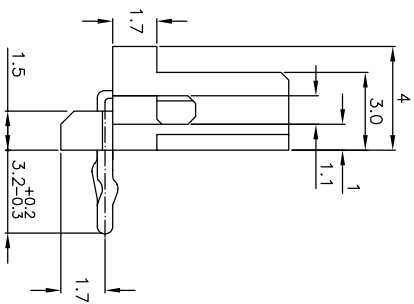
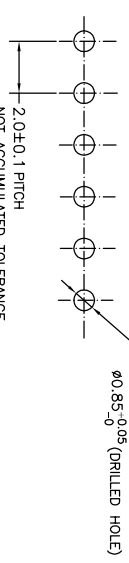


5~15 Pos.



- NOTES:
- MATERIAL: NYLON 66 (UL94V-0)
POST - TIN BRASS
 - APPLICABLE RECEPTACLE P/N 173977
 - THIS PART HAS BEEN OBSOLETE.

7-292253-4	5-292253-3	3-292253-1	1-292253-5	15	28	31.8	25.2	31.0
7-4	5-3	3-1	1-4	14	26	29.8	23.2	29.0
7-3	5-3	3-1	3-3	13	24	27.8	21.2	27.0
7-2	5-2	3-2	2-2	12	22	25.8	19.2	25.0
7-1	5-1	3-1	1-1	11	20	23.8	17.2	23.0
7-0	5-0	3-0	0-0	10	18	21.8	15.2	21.0
6-9	4-9	2-9	0-9	9	16	19.8	13.2	19.0
6-8	4-8	2-8	0-8	8	14	17.8	11.2	17.0
6-7	4-7	2-7	0-7	7	12	15.8	9.2	15.0
6-6	4-6	2-6	0-6	6	10	13.8	7.2	13.0
6-5	4-5	2-5	0-5	5	8	11.8	5.2	11.0
6-4	4-4	2-4	0-4	4	6	9.8	3.2	9.0
6-3	4-3	2-3	0-3	3	4	7.8	1.2	7.0
6-292253-2	4-292253-2	2-292253-2	292253-2	2	2	5.8	—	5.0



RECOMMENDABLE PCB LAYOUT
(PCB THK:0.8-1.6)

TOLERANCES UNLESS OTHERWISE SPECIFIED:

10 >	*	±0.2
30 >	*	±0.25
100 >	*	±0.3
ANGLE	>30	±3

THIS DRAWING IS A CONTROLLED DOCUMENT.

DMN: S.XU
CHK: S.YAO

APVD: T. SASAKI
PRODUCT SPEC: 108-60016

APPLICATION SPEC: —

WEIGHT: —

CUSTOMER DRAWING

DATE: 31JAN03

NAME: tyco Electronics Corporation
SHANGHAI, CHINA

POST HEADER ASS'Y HORIZONTAL TYPE
(AMP CT CONNECTOR 2mm PITCH)

SIZE: A3
PAGE CODE: 00779
DRAWING NO: 292253

RESTRICTED TO: —

SCALE: 5:1

SHEET: 1 OF 1

REV: A

X-ON Electronics

Largest Supplier of Electrical and Electronic Components

Click to view similar products for [Headers & Wire Housings](#) category:

Click to view products by [TE Connectivity](#) manufacturer:

Other Similar products are found below :

[892-18-020-10-001101](#) [58102-G61-06LF](#) [582553-1](#) [0009485154](#) [009176003701906](#) [0050291907](#) [LY20-4P-DT1-P1E-BR](#) [02.125.8002.8](#)
[609-3404](#) [61062-3](#) [61082-181009](#) [622-3653LF](#) [63453-116](#) [636-1030](#) [636-1427](#) [636-3427](#) [636-4007](#) [641938-9](#) [641991-4](#) [644827-2](#) [65817-010LF](#) [65817-015LF](#) [65863-015LF](#) [66207-023LF](#) [67095-007LF](#) [67601157](#) [68645-018](#) [68648-049](#) [70.362.1628.0](#) [70-4210](#) [70-4226B](#) [70-4853B](#) [707-5020](#) [707-5028](#) [71.350.2428.0](#) [71918-208LF](#) [71961-016LF](#) [733-134](#) [733-162](#) [754199-000](#) [760-3052](#) [787-8014-00](#) [79531-3000](#)
[FCN-360C032-B](#) [FCN-367T-T012/H](#) [FCN-723D010/2](#) [80.063.4001.1](#) [800-90-001-10-001000](#) [800-90-010-10-002000](#) [801-43-002-10-013000](#)