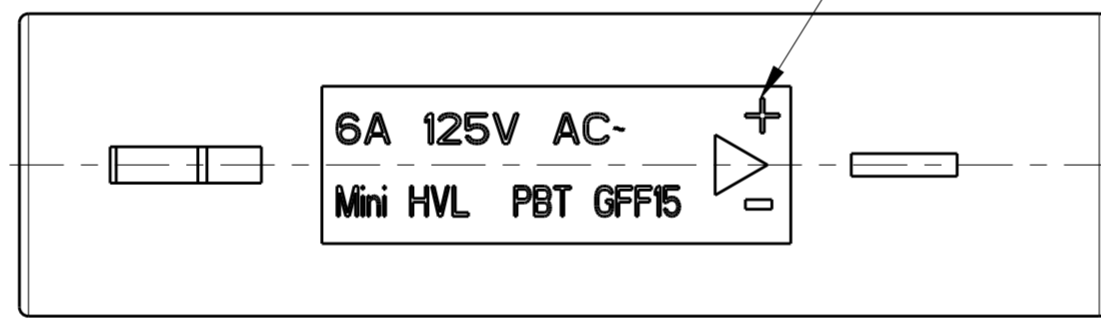
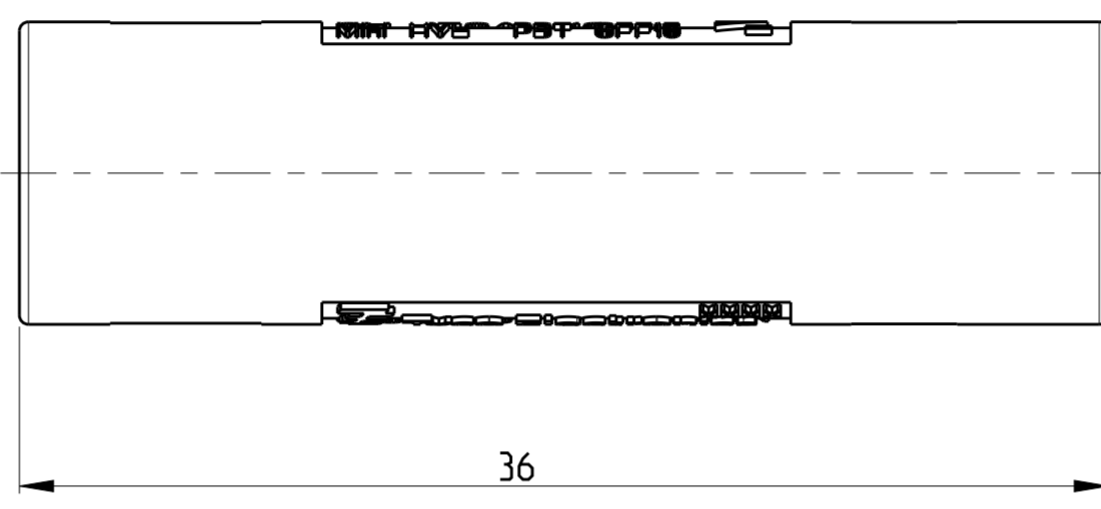
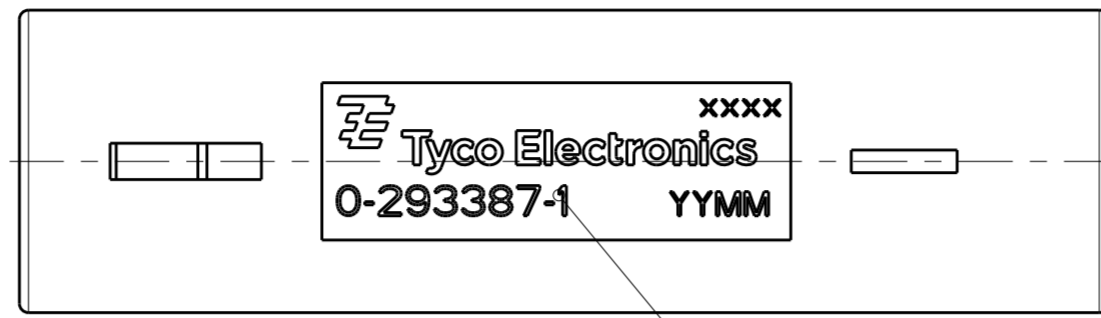
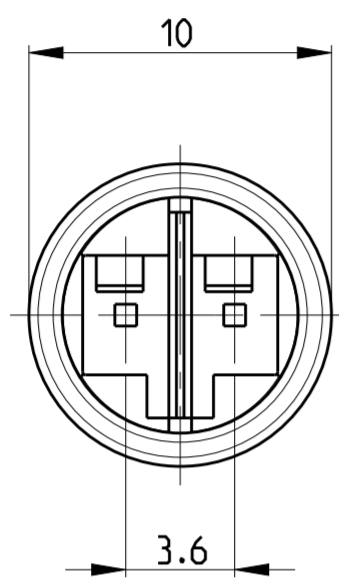


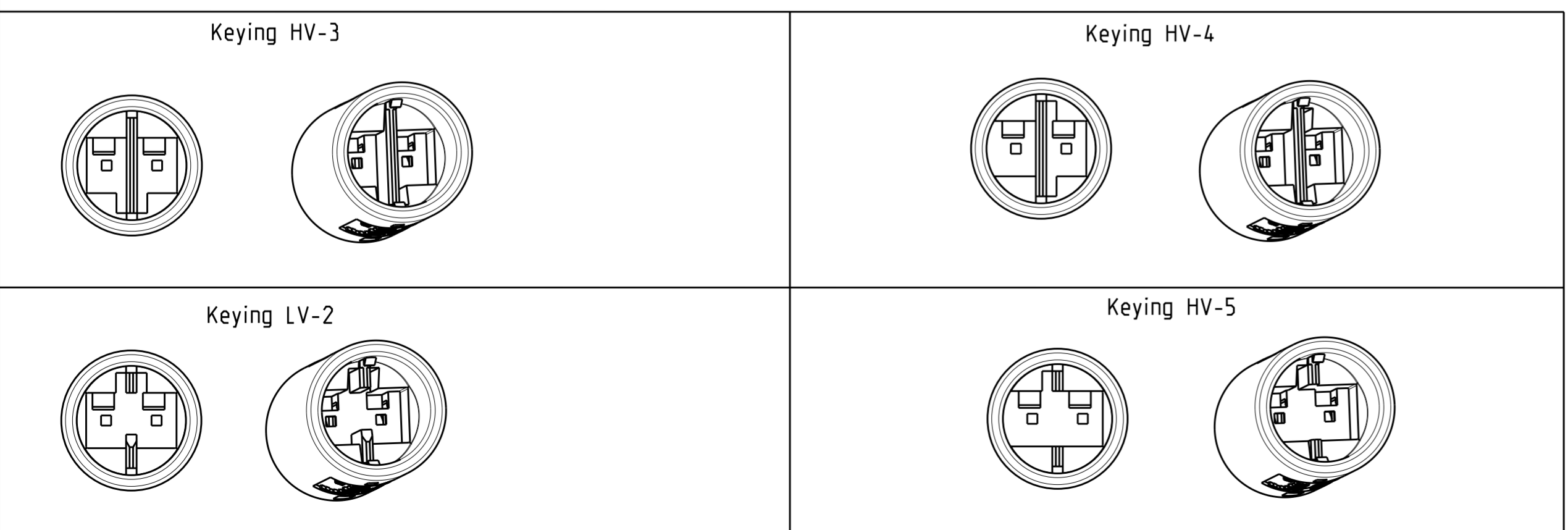
THIS DRAWING IS UNPUBLISHED. RELEASED FOR PUBLICATION 20  
 © COPYRIGHT 20 BY - ALL RIGHTS RESERVED.

LOC	DIST	REVISIONS			
P	LTR	DESCRIPTION	DATE	DWN	APVD
	B1	REVISED PER ECR-13-003447	11MAR2013	RS	DD
	E	REVISED PER ECR-16-005692	02JUN2016	RS	JL
	F	REVISED PER ECR-16-017348	24FEB2017	RK	JL



- Remarks:
1. cavities designed for MQS pin contact PN 1740335-x
  2. Counterpart is Plug PN 293388-x
- 3 Polarity marking +/- permanent / usable for DC version
  - 4 PN specific marking
  - 5 PBT 15GF, UL 94 V0 WHITE COLOR

P/N 293387-1 AS SHOWN



Note	Keying	COLOR/MATERIAL	REMARKS	Marking	PN
	LV-2	WHITE 5	LOW-VOLTAGE 125VAC/VDC	7A/125VAC/VDC =	293387-4
	HV-5	WHITE 5	HIGH-VOLTAGE 125V AC	6A/125V AC~	293387-3
	HV-4	WHITE 5	HIGH-VOLTAGE 125V AC	6A/125V AC~	293387-2
	HV-3	WHITE 5	HIGH-VOLTAGE 125V AC	6A/125V AC~	293387-1

THIS DRAWING IS A CONTROLLED DOCUMENT.

DIMENSIONS: mm	TOLERANCES UNLESS OTHERWISE SPECIFIED:	DWN A. Vecchia 12FEB2009	TE Connectivity <b>NECTOR S Lighting System Outlet</b>
		CHK G. Turco 12FEB2009	
		APVD G. Turco 12FEB2009	
MATERIAL	FINISH	PRODUCT SPEC	NAME
		APPLICATION SPEC	SIZE CAGE CODE DRAWING NO
		WEIGHT 2.2g	A2 00779 C-293387
		CUSTOMER DRAWING	RESTRICTED TO
		SCALE 3:1	SHEET 1 OF 1 REV F

## X-ON Electronics

Largest Supplier of Electrical and Electronic Components

*Click to view similar products for [Lighting Connectors](#) category:*

*Click to view products by [TE Connectivity](#) manufacturer:*

Other Similar products are found below :

[293300-7](#) [293660-5](#) [CNX\\_H03\\_NTP](#) [30-9767-BU](#) [3605](#) [3-21030-1](#) [ZCH-110-RGB-I](#) [503471-0290](#) [ZCH-110-RGB-J](#) [217-0716-200](#)  
[1954563-1](#) [1-293657-2](#) [2834036-1](#) [2834037-1](#) [1-2213222-4](#) [2-2213222-4](#) [2213222-4](#) [2834122-3](#) [2834122-5](#) [2834135-2](#) [FLA-R4142-30](#)  
[FLA-R4162-30](#) [FLA-R2142-30](#) [FLA-R2141-30](#) [FLA-R2162-30](#) [FLA-R2161-30](#) [FLA-R0161-30](#) [FLA-R0141-30](#) [FLA-R0142-30](#) [FLA-](#)  
[R0162-30](#) [FLA-C00-00](#) [DGA00010553](#) [CNXV04NTP](#) [104128-0610](#) [503485-0000 \(Cut Strip\)](#) [503485-0000 \(Loose Piece\)](#) [503485-0000](#)  
[\(MINI Reel\)](#) [1-2834074-2](#) [1-2834074-3](#) [1357-AC PLUG W2C \(CHINA\)](#) [1357-AC PLUG W2 \(USA\)](#) [104266-0110](#) [CNXV02NTP](#) [2106212-1](#)  
[2-2834074-2](#) [104266-0210](#) [293470-1](#) [293651-2](#) [293651-4](#) [1-2834006-2](#)