

4

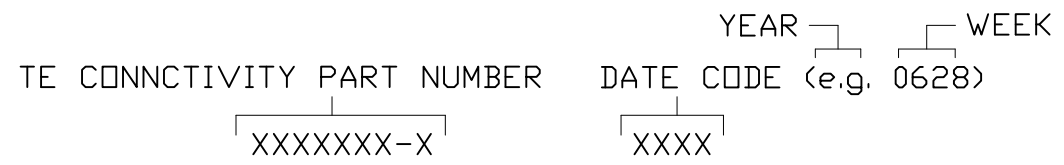
3

2

1

REVISIONS			
EC	REV	DESCRIPTION	DATE
	A1	REVISED PER ECO-11-005140	25MAR11

- 7. CONTACTS PURCHASED SEPARATELY.
- 6. ELCON EQUIVALENT SERIES 297-08-01100.
- 5. ITEMS PROVIDED TO THIS SPECIFICATION TO BE PERMANENTLY IDENTIFIED PER THE FOLLOWING IDENTIFIER:



4 A REFERENCE DIMENSION (X.XX) IS WITHOUT TOLERANCE AND USED FOR INFORMATION ONLY.

3. FINISHES:
RETENTION CLIPS: BRITE DIP PICKLED PER INDUSTRY STANDARDS.

2. MATERIALS:
INSULATORS: THERMOPLASTIC, GLASS REINFORCED, UL94V-0 FLAMMABILITY RATED, COLOR-BLACK.

RETENTION CLIPS: COPPER OR STAINLESS STEEL.

1. PART NUMBER CHANGES AND OR DESIGN CHANGES AFFECTING ITEM INTERCHANGEABILITY REQUIRE PRIOR TE CONNECTIVITY APPROVAL AND AUTHORIZATION BY REVISION TO THIS DRAWING.

NOTES: UNLESS OTHERWISE SPECIFIED

PART NUMBER
1648203-1

INCH OR INCH (MM) THIRD ANGLE PROJECTION UNLESS OTHERWISE SPECIFIED DIMENSIONS ARE IN INCHES (METRIC) TOLERANCES ANGLES ± .5' DECIMALS .XXX ± .010 (.25) .XX ± .02 (.3)	DRAWN R. F. A.	DATE 2/28/06	TE Connectivity TITLE CONNECTOR, PIN SIZE #12, #20, #12 CONFIG. LOWER DRAWER	SIZE	DWG NUMBER	REV.
	CHECKED			B	C= 1648203	A1
	APPROVED					
	APPROVED S. FLICKINGER	3/3/06				
	DCA APPROVED					
	ACAD FILE NUMBER	C1648203A.DWG		DWG SCALE	1=1	SH 1 OF 2

4

3

2

1

4

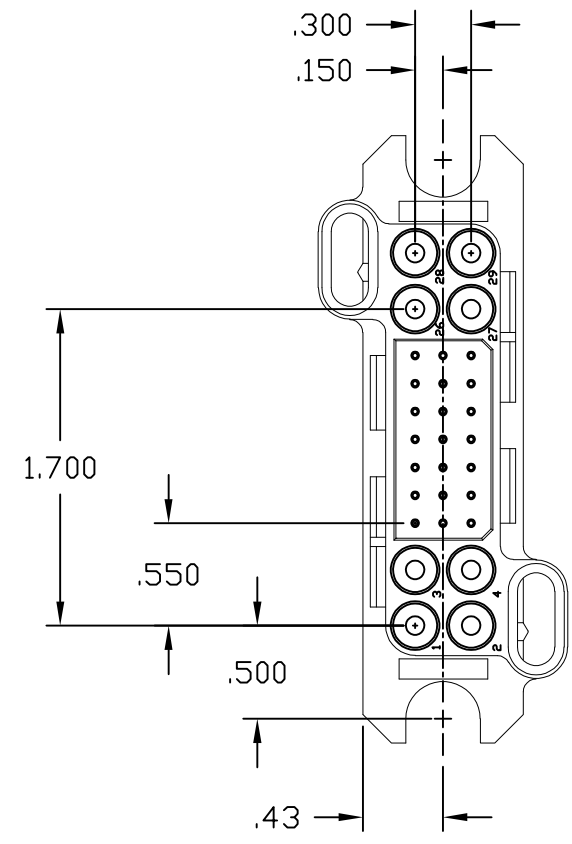
3

2

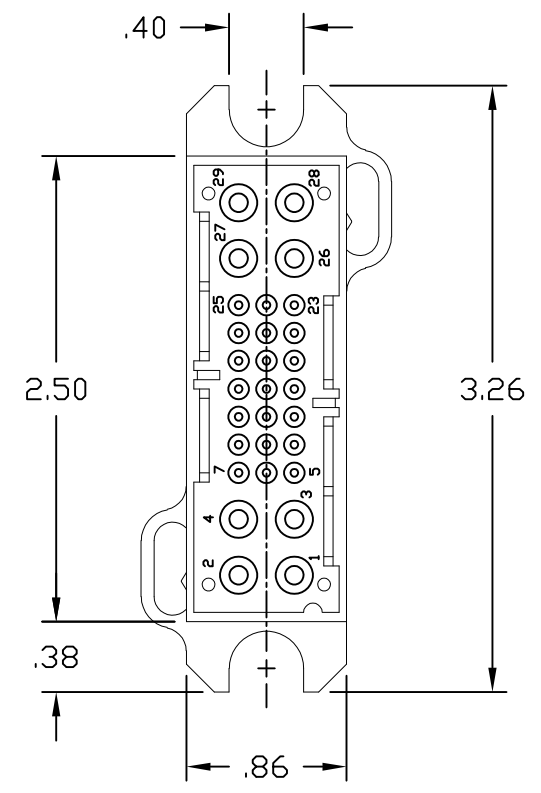
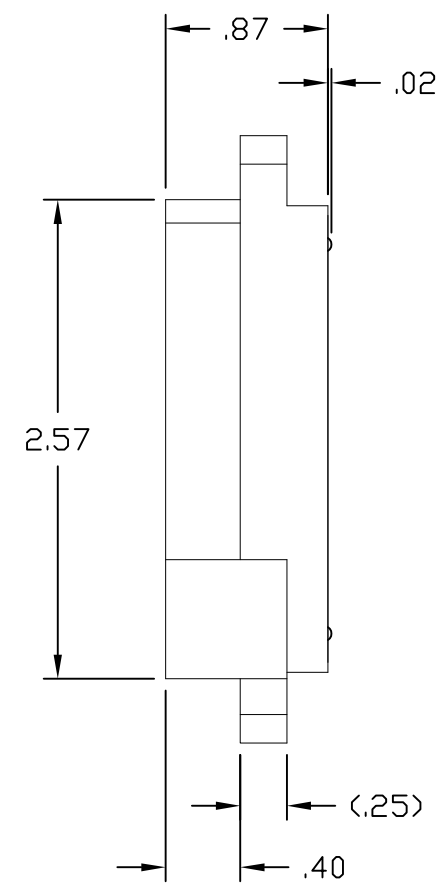
1

REVISIONS

EC	REV	DESCRIPTION	DATE
		SEE SHEET 1	



FRONT VIEW



REAR VIEW

B

B

A

A

<p>INCH OR INCH (MM)</p> <p>MM</p> <p>THIRD ANGLE PROJECTION</p> <p>UNLESS OTHERWISE SPECIFIED DIMENSIONS ARE IN INCHES (METRIC)</p> <p>TOLERANCES</p> <p>ANGLES ± .5°</p> <p>DECIMALS</p> <p>.XXX ± .010 (.25)</p> <p>.XX ± .02 (.3)</p>	<p>DRAWN</p> <p>R. F. A.</p>	<p>DATE</p> <p>2/28/06</p>	<p>STE TE Connectivity</p>		
	<p>CHECKED</p>		<p>TITLE</p> <p>CONNECTOR, PIN SIZE #12, #20, #12 CONFIG. LOWER DRAWER</p>		
	<p>APPROVED</p> <p>S. FLICKINGER</p>	<p>APPROVED</p> <p>3/3/06</p>	<p>SIZE</p> <p>B</p>	<p>DWG NUMBER</p> <p>C= 1648203</p>	<p>REV.</p> <p>A1</p>
	<p>DCA APPROVED</p>	<p>ACAD FILE NUMBER</p> <p>C1648203A.DWG</p>	<p>DWG SCALE</p> <p>1=1</p>	<p>SH</p> <p>2 OF 2</p>	

4

3

2

1

X-ON Electronics

Largest Supplier of Electrical and Electronic Components

Click to view similar products for [Heavy Duty Power Connectors](#) category:

Click to view products by [TE Connectivity](#) manufacturer:

Other Similar products are found below :

[647757-1](#) [6643411-1](#) [6646058-2](#) [6646137-1](#) [6646138-1](#) [6646479-1](#) [6646608-1](#) [6646786-1](#) [6646940-1](#) [6651091-1](#) [6651525-1](#) [6651529-1](#)
[6651788-1](#) [696475-1](#) [702-32-01109](#) [703-25-02205](#) [73000005059](#) [73000005642](#) [73080255059](#) [73080965046](#) [765-15-0080A](#) [765-16-0080B](#)
[765-18-0080D](#) [829992-1](#) [902-77-02113](#) [PS00/A0620/6300](#) [PS25/A0420/63](#) [129-1J](#) [1409400](#) [AN0024023](#) [E6374G1](#) [e6389g2](#) [157-43GW8](#)
[MS3117-14AC](#) [1643543-1](#) [1650540-1](#) [1651811-2](#) [1766260-1](#) [1766282-1](#) [1766966-1](#) [1791340000](#) [NLDFT-3-BL-L-S120-M40A](#) [NLDFT-N-](#)
[W-L-C240-M40B](#) [NLS-2-R-C240-M40B](#) [NLS-N-W-C240-M40B](#) [NPS-3-BL-T6](#) [1986615-1](#) [2-1589900-8](#) [2199314-1](#) [KA8102](#)