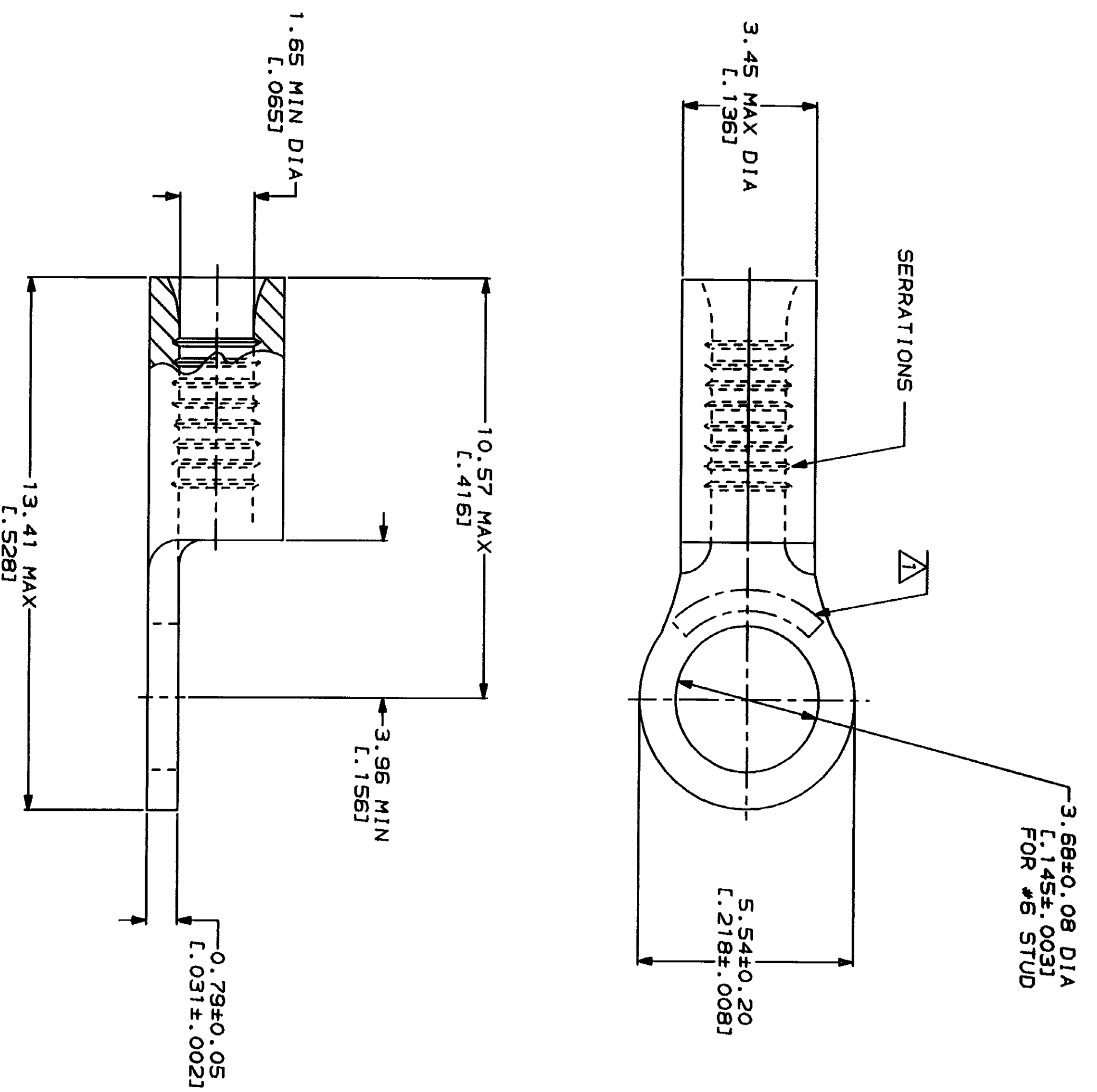


LOC	DIST	REV	ZONE	LTR	DESCRIPTION	DATE	APPD
G	14				REVISED PER 0720-0230-93	2/25/94	DAV

**METPRIG**  
DIMENSIONS LISTED IN MM [ INCHES ]

<b>AMP</b> WIRE RANGE 22-16 AWG STRANDED	<b>UL</b> E13288 Listed 22-16 AWG STRANDED
<b>LR7189</b> Certified	MILITARY P/N AND CLASS
NOT CERTIFIED	NOT APPLICABLE

△ STAMP AMP 22-18\* APPROX AS SHOWN  
22-16 TERMINALS ARE STAMPED 22-18 IN  
ACCORDANCE WITH MILITARY SPECIFICATION  
MIL-T-7928, COMMERCIAL WIRE RANGE IS 22-16



AMP INCORPORATED CUSTOMER SERVICE SYSTEMS	MAX RECOMMENDED OPERATING TEMPERATURE: 170°C MAX
FOR ADDITIONAL PRODUCT INFORMATION OR COPIES OF DRAWINGS AND TECHNICAL DOCUMENTS 1-800-522-6752	VOLTAGE RATING: NOT APPLICABLE
FOR APPLICATION TOOLING INFORMATION 1-800-722-1111	WIRE CROSS SECTIONAL AREA RANGE: 0.26-1.65mm <sup>2</sup> [509-3,260] CIR MILS STRANDED
FOR ORDER ENTRY 1-800-526-5142	PRODUCT INFORMATION CENTER 1-800-522-6752

DO NOT SCALE PRINT.  
UNLESS SPECIFIED  
DIMENSIONS IN—(INCHES)—  
TOLERANCES ON:  
2 PLG DEC ± .001  
3 PLG DEC ± .001  
ANGLES  
PATERIAL  
COPPER PER  
ASTM B-152  
ANNEALED

DR 2-3-93 TA BRINKMAN	NAME
CHK 2-3-93 DA PATTERSON	AMP Incorporated Harrisburg, PA 17105-3508
APPD 2-3-93 DE MILLER	TERMINAL, RING TONGUE, BUDGET
APPD 2-3-93 JL NECKLEY	AMP 31101
PRODUCT SPEC	PART NO
APPLICATION SPEC	31101
FINISH TIN PLATE 0.00254L.0001001 MIN THK PER MIL-T-10727	SCALE 10:1
WEIGHT	CASE CODE 00779
	DRAWING NO 31101
	SHEET 1 OF 1

## X-ON Electronics

Largest Supplier of Electrical and Electronic Components

*Click to view similar products for [Terminals](#) category:*

*Click to view products by [TE Connectivity](#) manufacturer:*

Other Similar products are found below :

[00-054007-01074-6](#) [00-054007-70206-1](#) [00-054007-70210-8](#) [00-054007-70217-7](#) [00-054007-70226-9](#) [00-054007-70228-3](#) [00-054007-70248-1](#) [00-054007-70256-6](#) [00-054007-70301-3](#) [00-054007-70316-7](#) [00-054007-49560-4](#) [00-054007-70209-2](#) [00-054007-70225-2](#) [00-054007-70227-6](#) [00-054007-70231-3](#) [00-054007-70241-2](#) [00-054007-70242-9](#) [00-054007-70244-3](#) [00-054007-70246-7](#) [00-054007-70263-4](#) [00-054007-70288-7](#) [00-054007-70290-0](#) [00-054007-70300-6](#) [00-054007-70304-4](#) [01-2065-1-0216](#) [01-2900-1-04412](#) [00581P0075](#) [600TS-10](#) [60205-1](#) [604200-1](#) [605601-1](#) [60598-1-CUT-TAPE](#) [61314-6-C](#) [61810-3](#) [61-S](#) [61-SN](#) [626-0194](#) [62-NBM-A](#) [62-SN](#) [62-SP](#) [63-S](#) [640179-1](#) [M55155/059I03](#) [M55155/079C01](#) [M55155/099H02](#) [M55155/109H01](#) [M55155/109H02](#) [M55155/12XH05](#) [M55155/16XH02](#) [M55155/29-5S](#)