

.4375-28,UNEF-2A

OST JACK

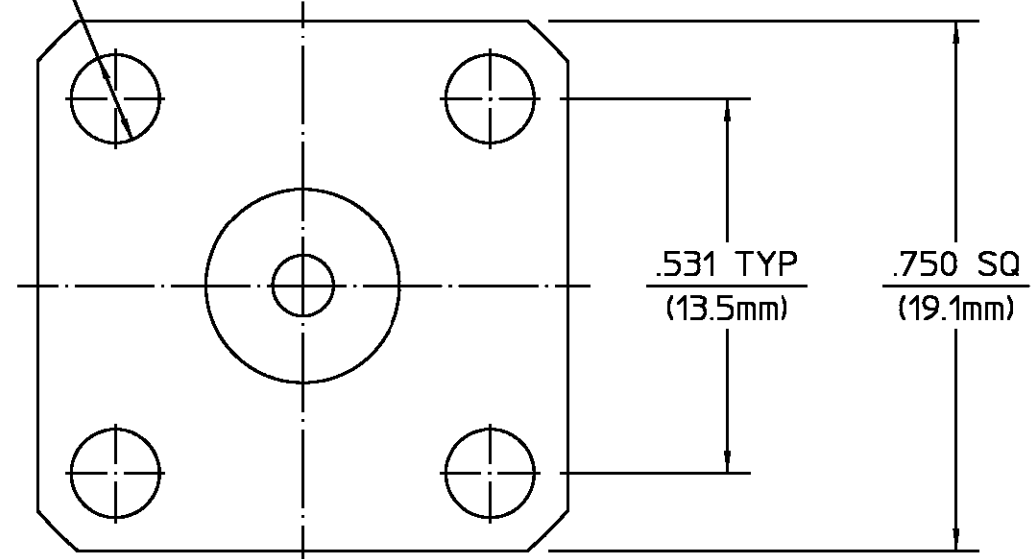
REF PLANE

NOTES:

- 1. CAPTURED CENTER CONTACT

REVISIONS			
REV	DESCRIPTION	DATE	APPROVED
01 <sub>0</sub>	RELEASED		
01 <sub>1</sub>	REDRAWN IN CAD PER ECN 88-0678	10/21/91	BB

.125 DIA (3.2mm) 4 PLACES



HOUSING	BRASS PER QQ-B-626 COMP. 360 HALF HARD	NICKEL PLATE PER QQ-N-290 OVER COPPER STRIKE
DIELECTRIC	TFE FLUOROCARBON PER ASTM-D-1457	N/A
CENTER CONTACT	BERYLLIUM COPPER PER ASTM B 196, ALLOY C17330 CONDITION H	GOLD PLATE PER MIL-G-45204 OVER COPPER PLATE PER MIL-C-14550
COMPONENT	MATERIAL	FINISH

UNLESS OTHERWISE SPECIFIED DIMENSIONS ARE IN INCHES TOLERANCE ON FRAC. DEC. ANGLES ± 1/64 ± .005 ± 1°	DRAWN BY JPD	DATE 6-18-75	AMP Incorporated 140 Fourth Avenue Waltham, MA 02451-7599
	CHECKED BY RMF	DATE 6-18-75	
APPRD BY PRB	DATE 6-18-75	AMP	
These drawings and specifications are the property of Omni Spectra Incorporated and shall not be reproduced or copied or used in whole or in part as the basis for the manufacture or sale of item(s) without written permission.	USE ASSY PROCEDURE	TITLE OST 4 HOLE FLANGE MOUNT JACK RECEPTACLE STRAIGHT TERMINAL	
	NO. AP. N/A	SIZE B	CODE IDENT NO. 26805
		3152-1201-10	REV 01 <sub>1</sub>
	SCALE 4:1	SHEET 1 OF 1	

CUSTOMER DRAWING

AMP PART # 1057780-1  
SHEET 1 OF 1 REV A

## X-ON Electronics

Largest Supplier of Electrical and Electronic Components

*Click to view similar products for [RF Connectors / Coaxial Connectors](#) category:*

*Click to view products by [TE Connectivity](#) manufacturer:*

Other Similar products are found below :

[8915-1511-000](#) [89674-0827](#) [6001-7071-019](#) [6002-7051-003](#) [6002-7551-202](#) [6059674-1](#) [619550-1](#) [630059-000](#) [M39030/3-01N](#) [6500-7071-046](#) [6769](#) [CX050L2AQ](#) [7002-1541-010](#) [7002-1542-011](#) [7004-1512-000](#) [7009-1511-004](#) [7010-1511-000](#) [7029-1511-060](#) [7101-1541-010](#) [7101-1571-002](#) [7145-1521-002](#) [7203-1571-003](#) [7209-1511-011](#) [7210-1511-015](#) [7210-1511-019](#) [73137-5015](#) [73216-2241](#) [73404-2300](#) [7405-1521-005](#) [7405-1521-802](#) [8527](#) [8547](#) [FS11V](#) [877931](#) [8808-1511-001](#) [9074-9513-000](#) [9101-9573-002](#) [910A205F](#) [9130-9573-002](#) [PL11SC-026](#) [PL375-33](#) [PL40-5](#) [PL74C-221](#) [PL75MC-217](#) [PL803-7](#) [1200690078](#) [1-201144-1](#) [R107003010W](#) [R110A172100](#) [R112186000](#)