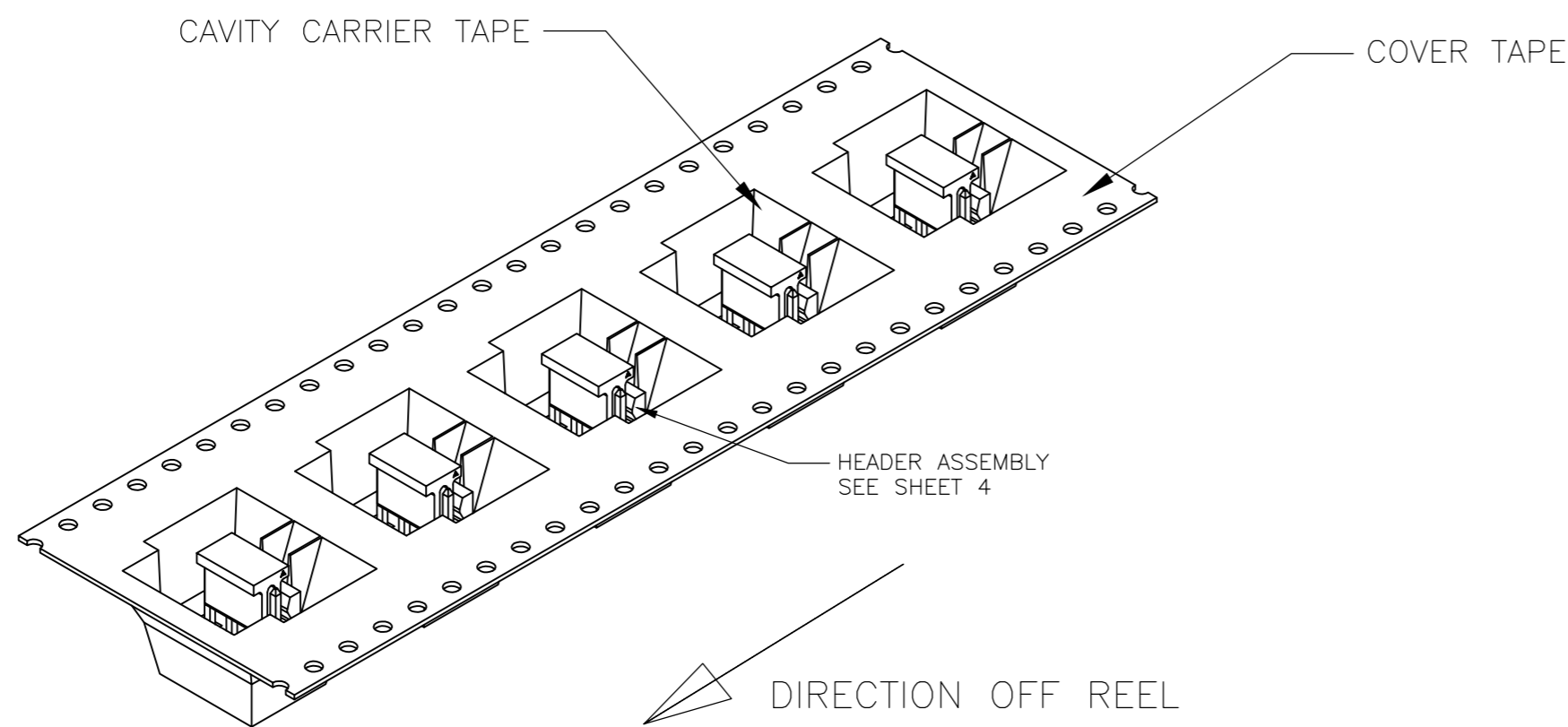
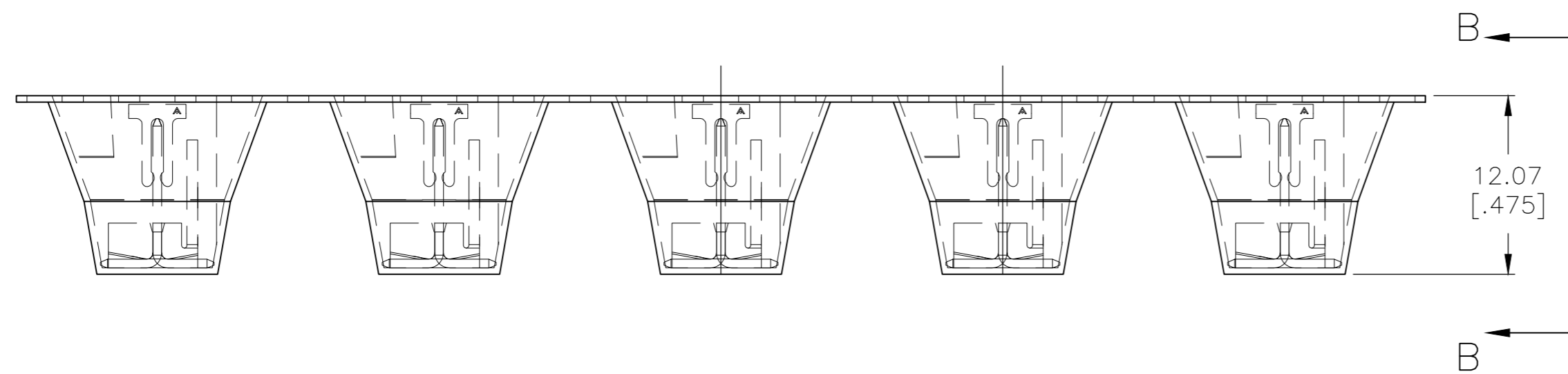
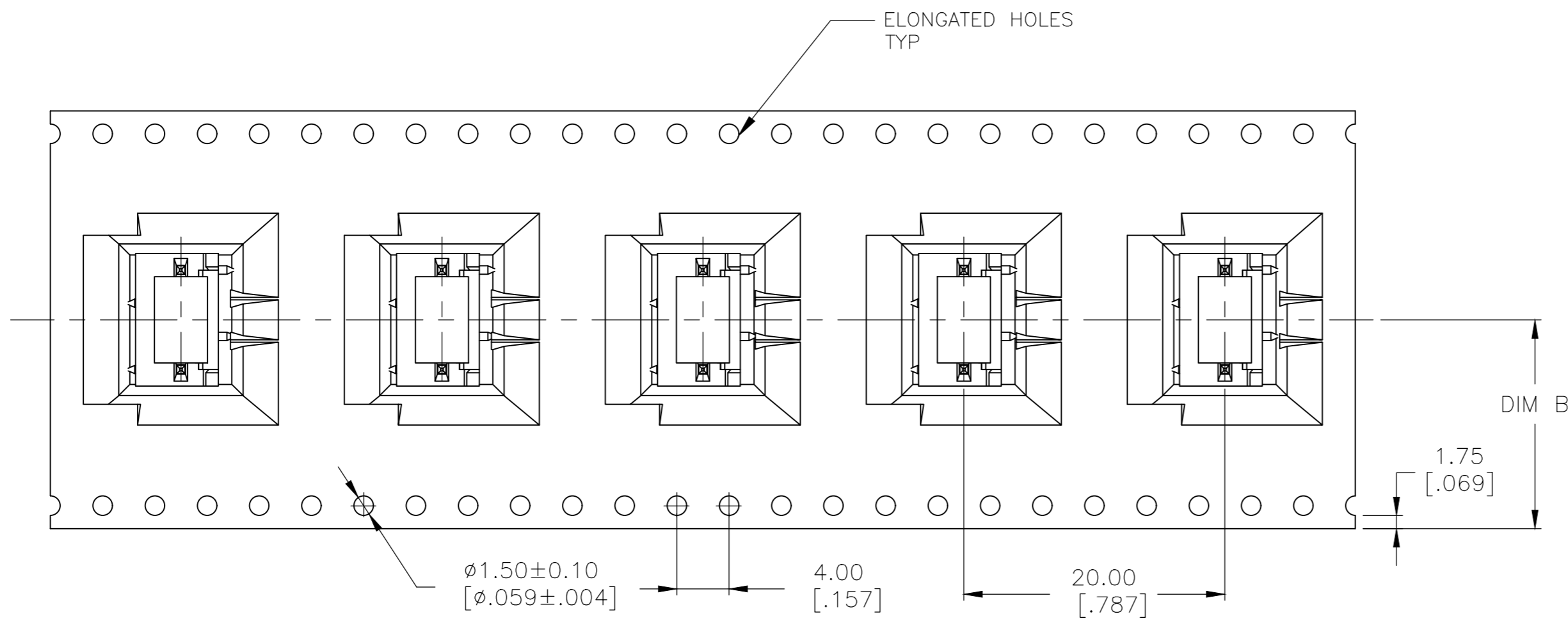
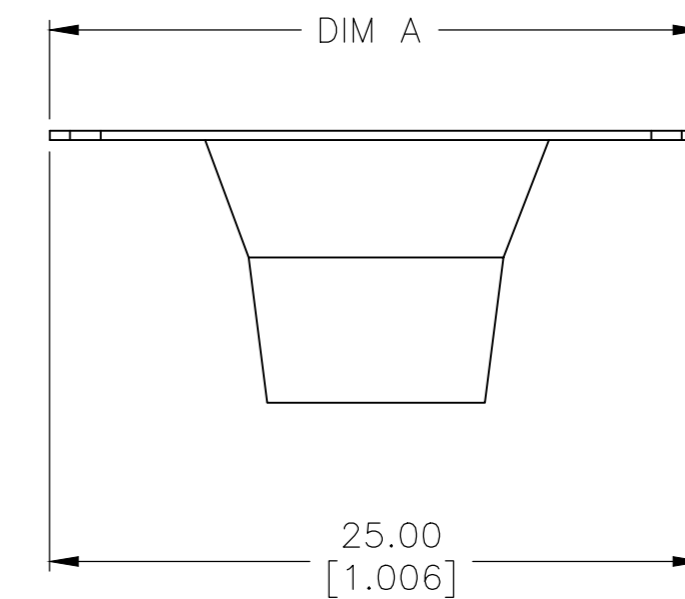


THIS DRAWING IS UNPUBLISHED. RELEASED FOR PUBLICATION
 © COPYRIGHT - By - ALL RIGHTS RESERVED.

REVISIONS					
P	LTR	DESCRIPTION	DATE	DWN	APVD
B5		REVISED PER ECR-19-014333	03OCT2019	BDA	SW



- 1 MATERIAL:
 HEADER- NYLON 4/6, HIGH TEMPERATURE, UL94V-0
 POST: COPPER ALLOY
 CAVITY CARRIER TAPE: BLACK CONDUCTIVE POLYCARBONATE
 COVER TAPE: POLYESTER FILM TAPE.
- 2 FINISH:
 HOUSING: COLOR, BLACK
 POST: GOLD PLATED.
- 3 POSTS TO WITHSTAND 13 NEWTONS [3 LBS] MIN AXIAL FORCE IN THIS DIRECTION WITHOUT DISLODGING, BEFORE SOLDERING.
- 4 POSTS SOLDER TAILS MUST COMPLY WITH AMP SOLDERABILITY SPEC 109-11-2.
- 5 MEASURED AT $\square A$
- 6 APPLIES WHEN HEADER IS HELD STRAIGHT.
- 7 COORDINATE DIMENSION APPLIES FROM CENTER OF ACTUAL FEATURE.
- 8 DIMENSIONS APPLY TO THE COMPONENT SIDE OF BOARD.
- 9 MAXIMUM TEMPERATURE EXPOSURE DURING REFLOW SOLDERING NOT TO EXCEED 280°C [536°F]
- 10 HEADERS ARE SUPPLIED ON A 330.2mm [13 INCH] DIAMETER REEL, WITH 225 PARTS PER REEL. THE CAVITY CARRIER TAPE HOLDS 1 PART PER POCKET, ORIENTED AS SHOWN.
- 11 AMP LOGO, UL AND CSA TRADEMARKS TO APPEAR ON THIS SURFACE.

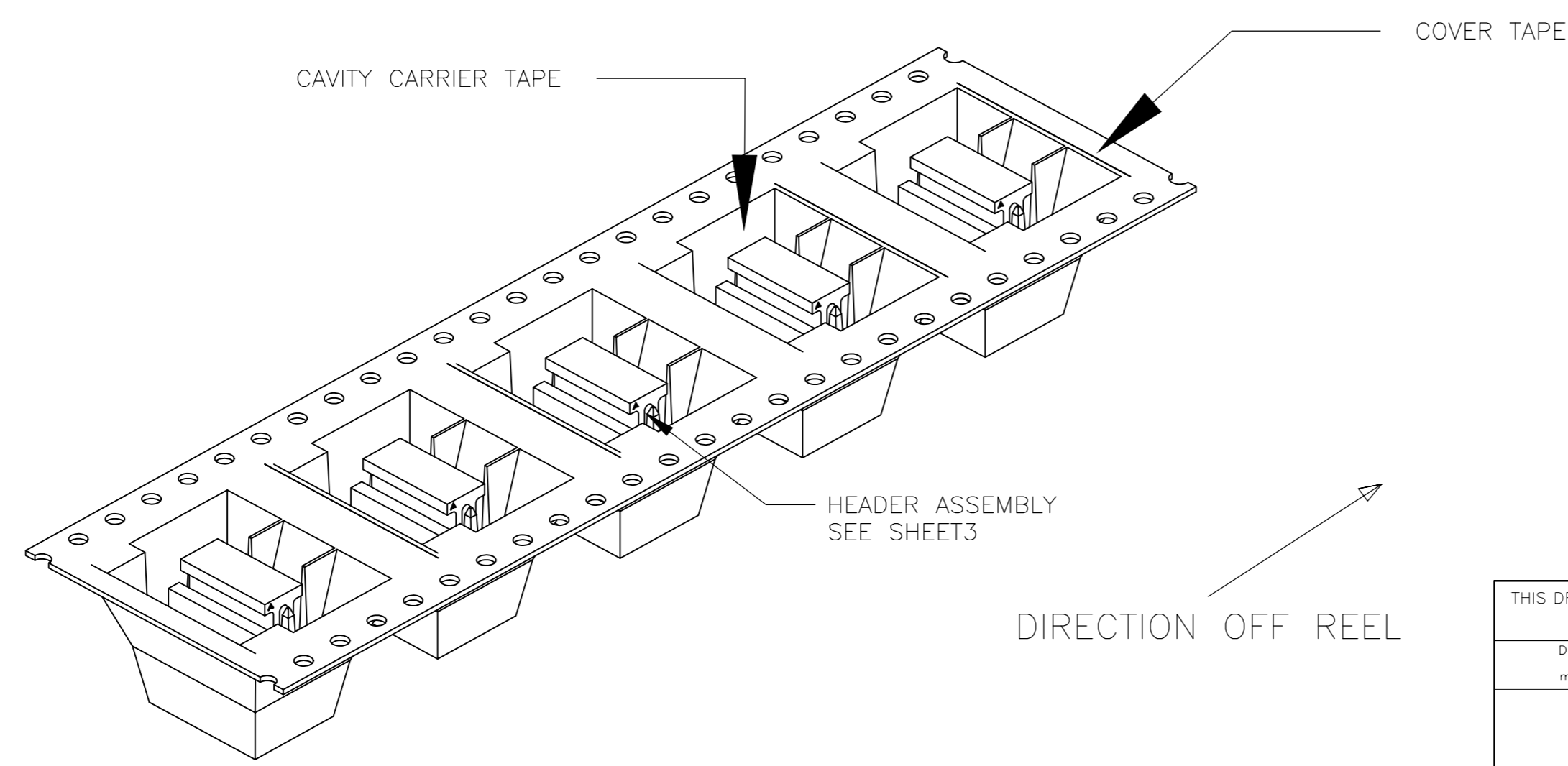
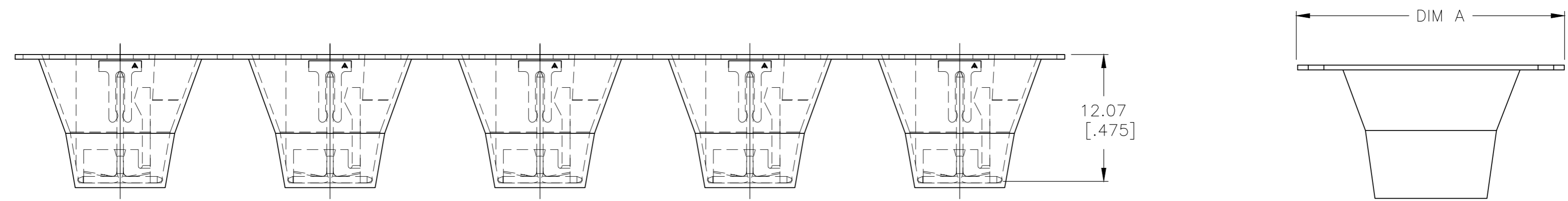
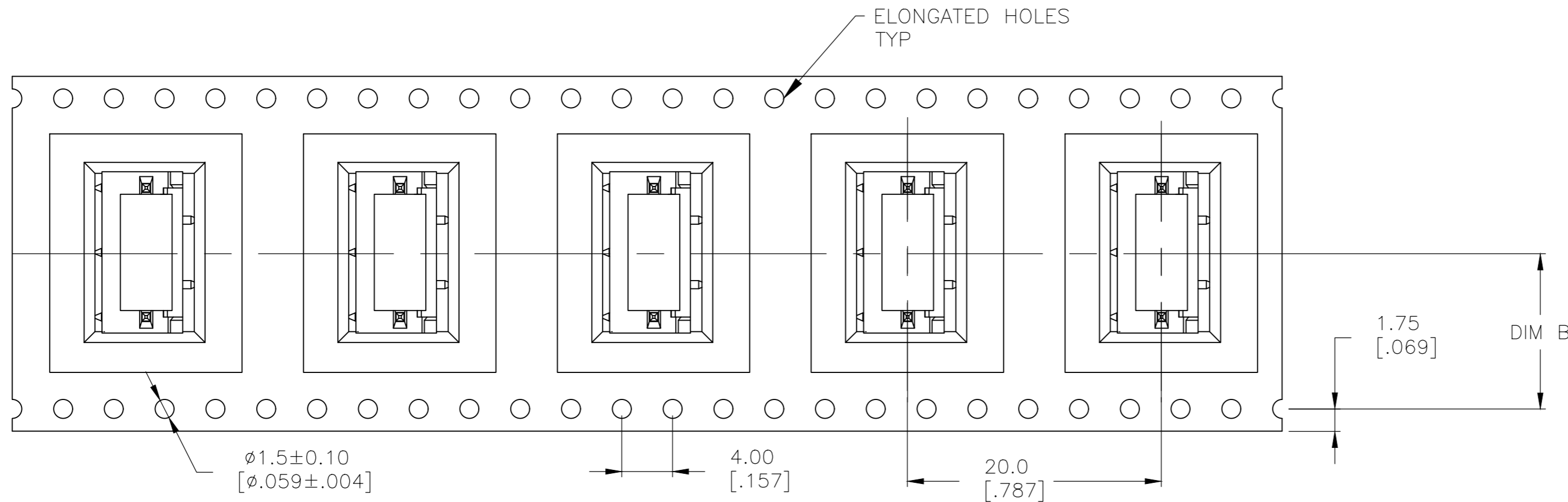


20.20 [.795]	44.00 [1.732]	3-1744163-7
DIM "B"	DIM "A"	PART NO

THIS DRAWING IS A CONTROLLED DOCUMENT.		DWN jr ruth 30MAR11	TE TE Connectivity	
DIMENSIONS: mm [INCHES]		CHK SAM MACE 30MAR11		
TOLERANCES UNLESS OTHERWISE SPECIFIED:		APVD SAM MACE 30MAR11	NAME	
0 PLC ± -	1 PLC ± -	PRODUCT SPEC	MTA-100 HEADER ASSY, SURFACE MOUNT, FRICTION LOCK, TAPE LOADED W/CAP	
2 PLC ± -	3 PLC ± .015	APPLICATION SPEC	SIZE	CAGE CODE
4 PLC ± -	ANGLES ± 1°	114-1019	A2	00779
MATERIAL	FINISH	WEIGHT	DRAWING NO	RESTRICTED TO
-	-	-	C=1744163	-
CUSTOMER DRAWING			SCALE 3:1	SHEET 1 of 5
			REV B5	

THIS DRAWING IS UNPUBLISHED. RELEASED FOR PUBLICATION
 © COPYRIGHT - By - ALL RIGHTS RESERVED.

REVISIONS					
P	LTR	DESCRIPTION	DATE	DWN	APVD
-	-	SEE SHEET 1	-	-	-



14.20 [.559]	32.00 [1.260]	3-1744163-4
DIM "B"	DIM "A"	PART NO

THIS DRAWING IS A CONTROLLED DOCUMENT.		DWN jr ruth 30MAR11	TE Connectivity	
DIMENSIONS: mm [INCHES]		CHK SAM MACE 30MAR11	NAME MTA-100 HEADER ASSY, SURFACE MOUNT, FRICTION LOCK, TAPE LOADED W/CAP	
TOLERANCES UNLESS OTHERWISE SPECIFIED:		APVD SAM MACE 30MAR11	PRODUCT SPEC 108-1050	
0 PLC ± -		APPLICATION SPEC 114-1019	SIZE A2	CAGE CODE 00779
1 PLC ± -		WEIGHT	DRAWING NO C=1744163	RESTRICTED TO -
2 PLC ± -		CUSTOMER DRAWING		
3 PLC ± .015		SCALE 3:1	SHEET 2 of 5	REV B5
4 PLC ± -				
ANGLES ± 1°				
FINISH				

THIS DRAWING IS UNPUBLISHED. RELEASED FOR PUBLICATION
 © COPYRIGHT - By - ALL RIGHTS RESERVED.

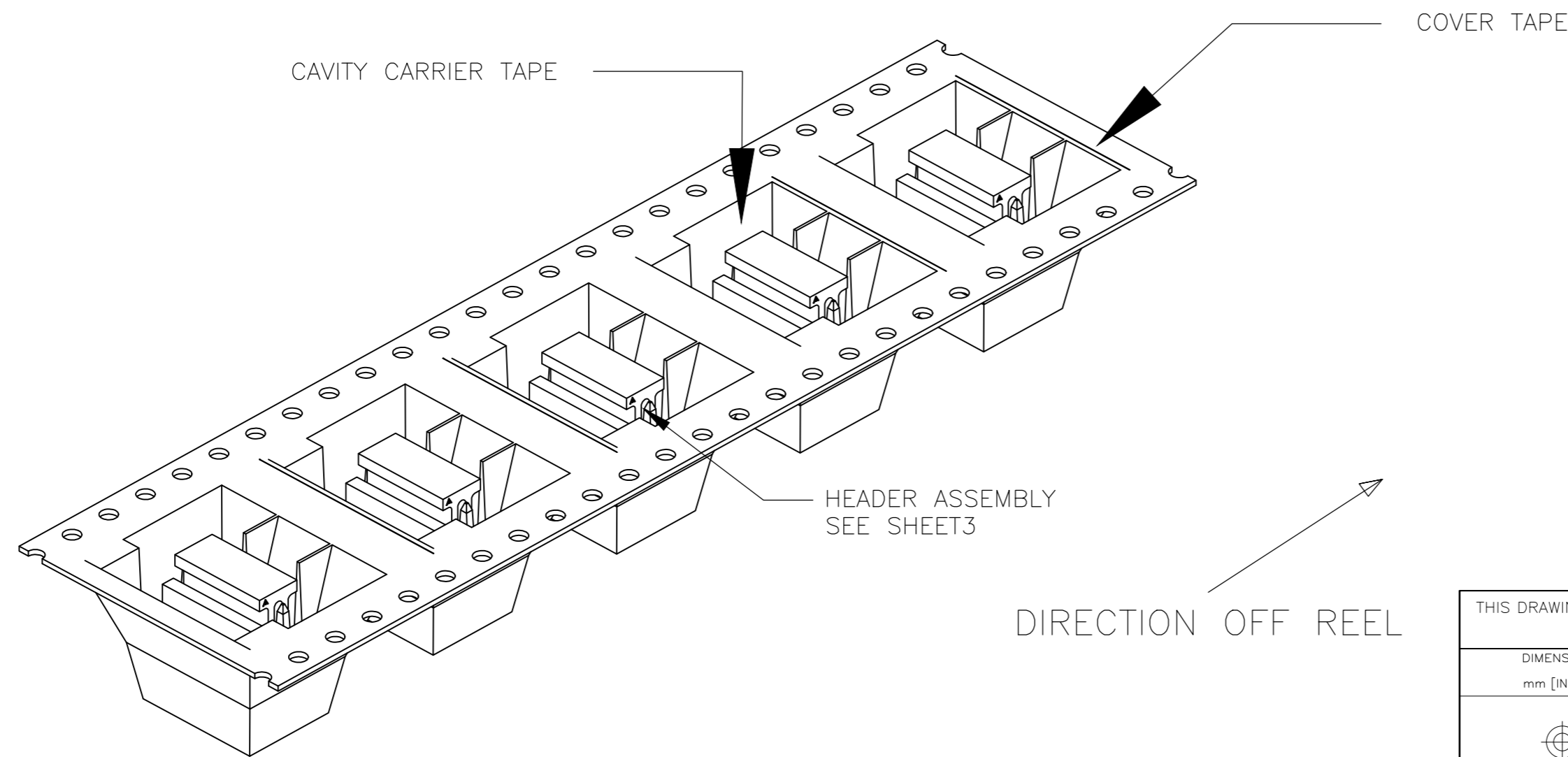
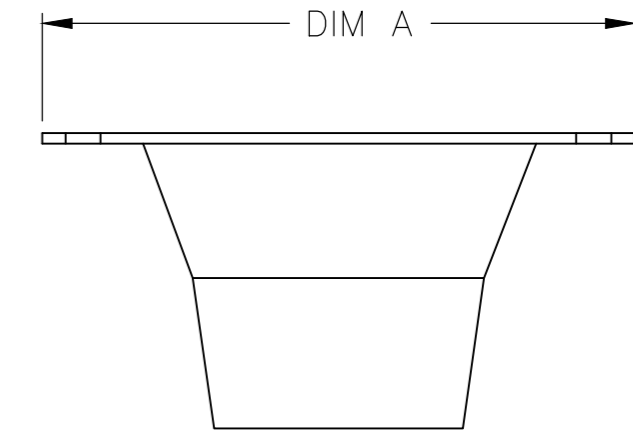
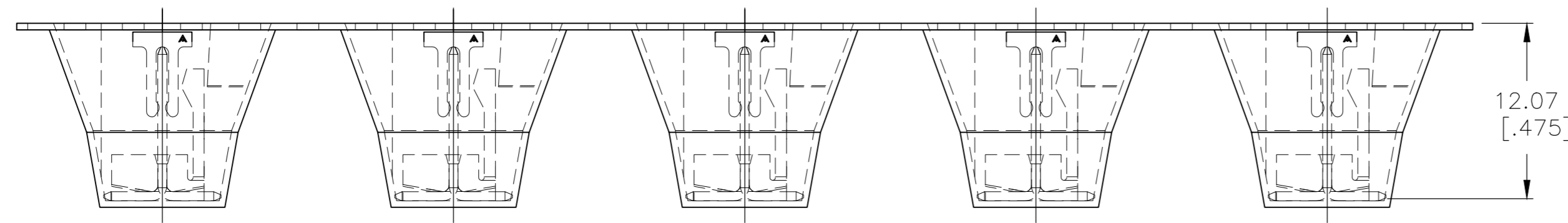
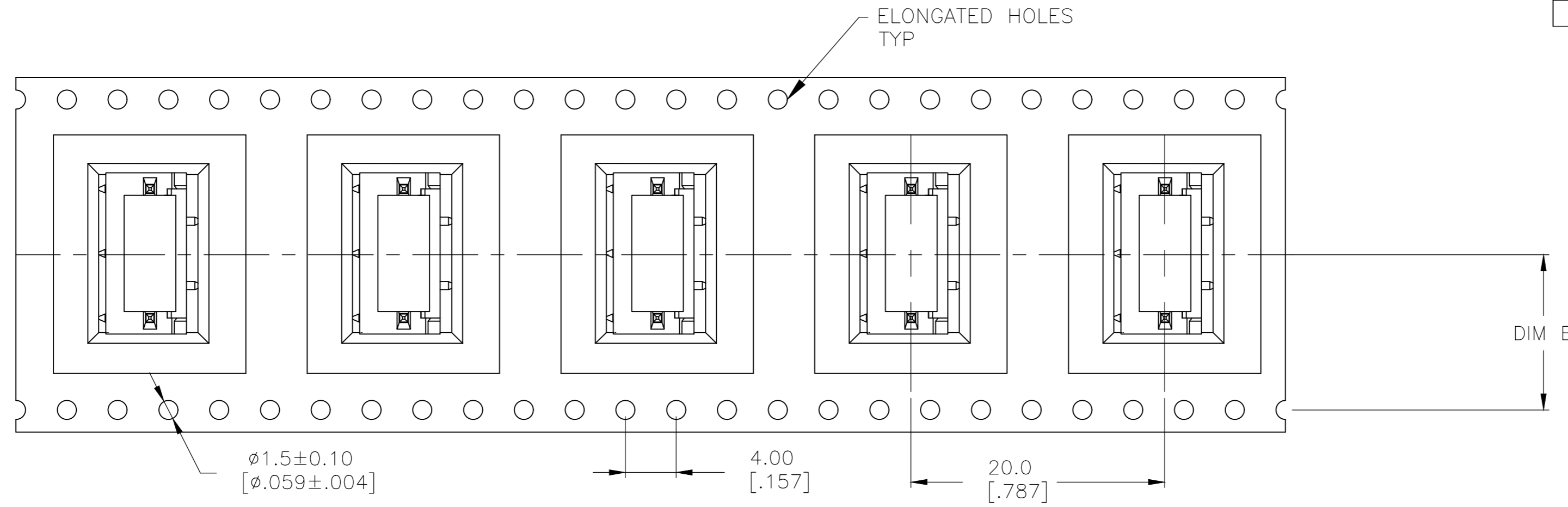
REVISIONS					
P	LTR	DESCRIPTION	DATE	DWN	APVD
-	-	SEE SHEET 1	-	-	-

D

C

B

A

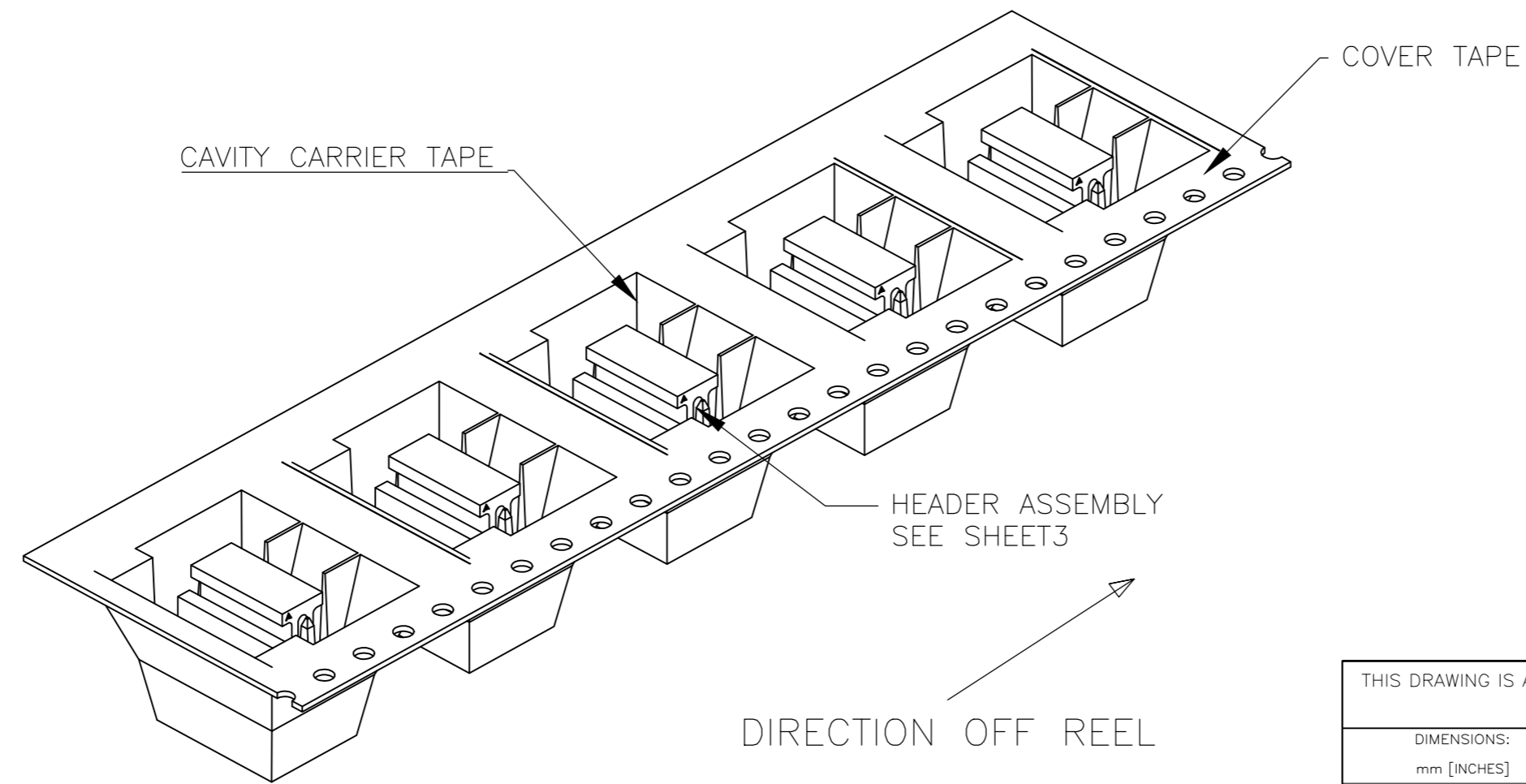
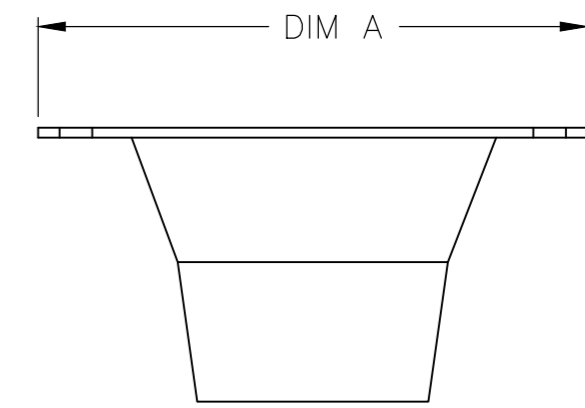
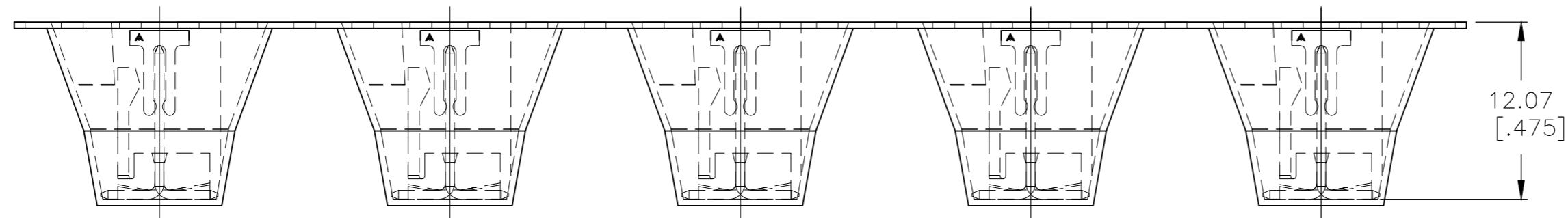
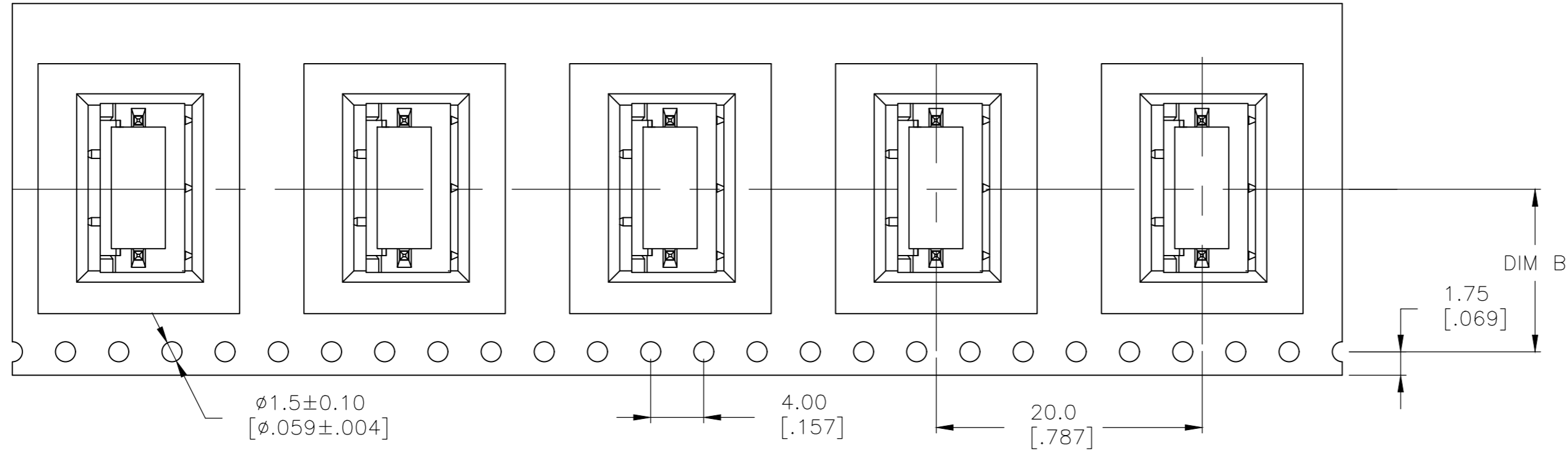


12.20 [.480]	24.00 [0.945]	3-1744163-3
DIM "B"	DIM "A"	PART NO

THIS DRAWING IS A CONTROLLED DOCUMENT.		DWN jr_ruth 30MAR11	TE Connectivity	
DIMENSIONS: mm [INCHES]		CHK SAM MACE 30MAR11	NAME	
TOLERANCES UNLESS OTHERWISE SPECIFIED:		APVD SAM MACE 30MAR11	MTA-100 HEADER ASSY, SURFACE MOUNT, FRICTION LOCK, TAPE LOADED W/CAP	
0 PLC ± -	1 PLC ± -	PRODUCT SPEC 108-1050	SIZE A2	RESTRICTED TO
2 PLC ± -	3 PLC ± .015	APPLICATION SPEC 114-1019	CAGE CODE 00779	DRAWING NO 1744163
4 PLC ± -	ANGLES ± 1°	WEIGHT	SCALE 3:1	
MATERIAL	FINISH	CUSTOMER DRAWING	SHEET 3 of 5	REV B5

THIS DRAWING IS UNPUBLISHED. RELEASED FOR PUBLICATION
 © COPYRIGHT - By - ALL RIGHTS RESERVED.

REVISIONS				
P	LTR	DESCRIPTION	DATE	APVD
-	-	SEE SHEET 1	-	-

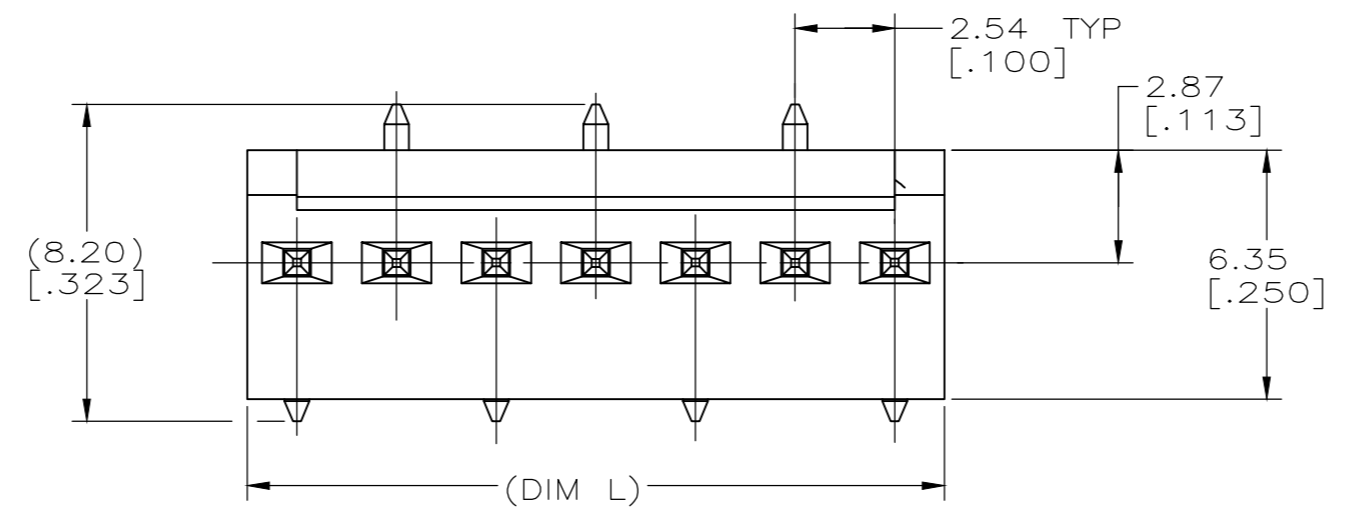


11.5 [.453]	24.00 [.945]	3-1744163-2
DIM "B"	DIM "A"	PART NO

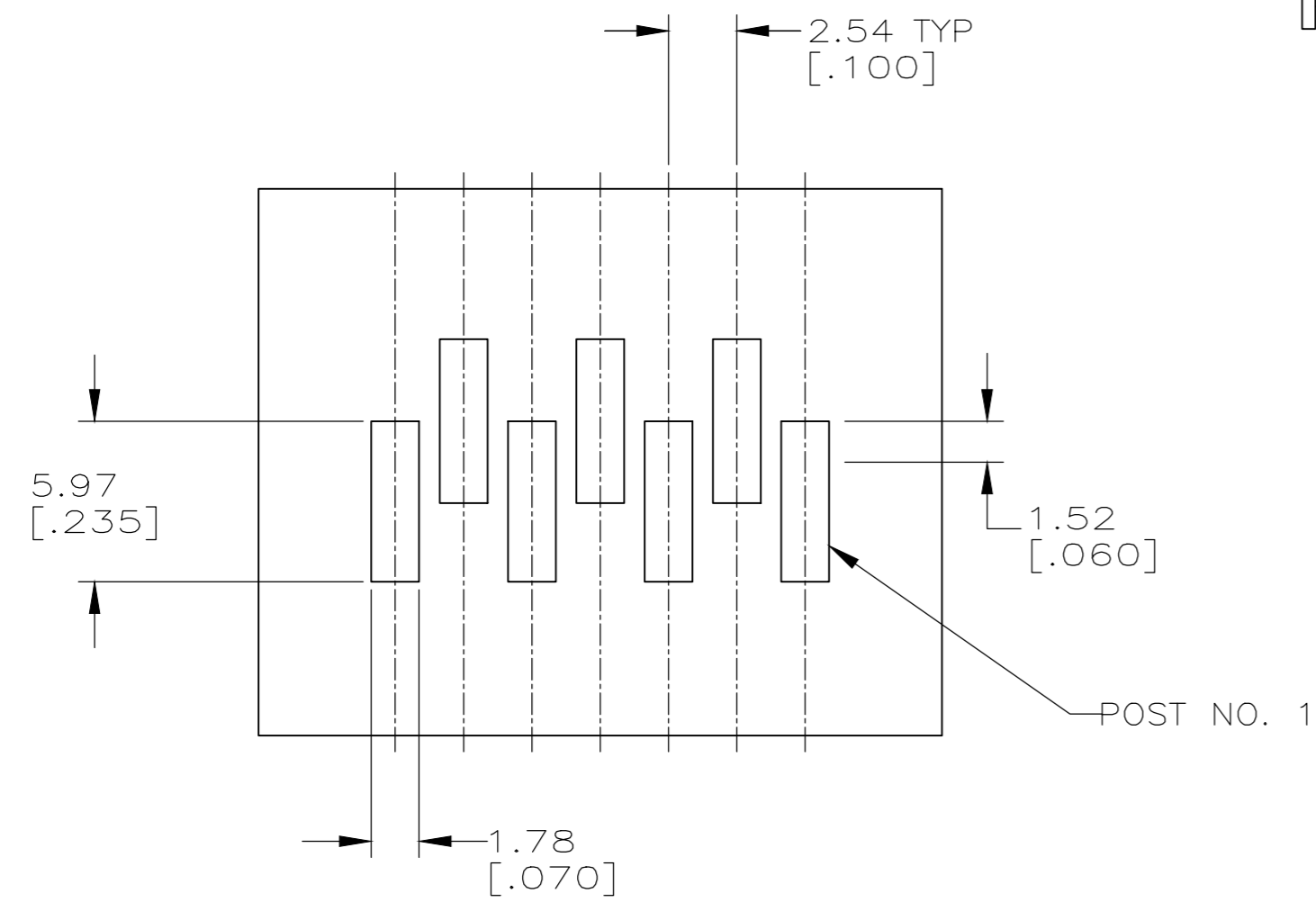
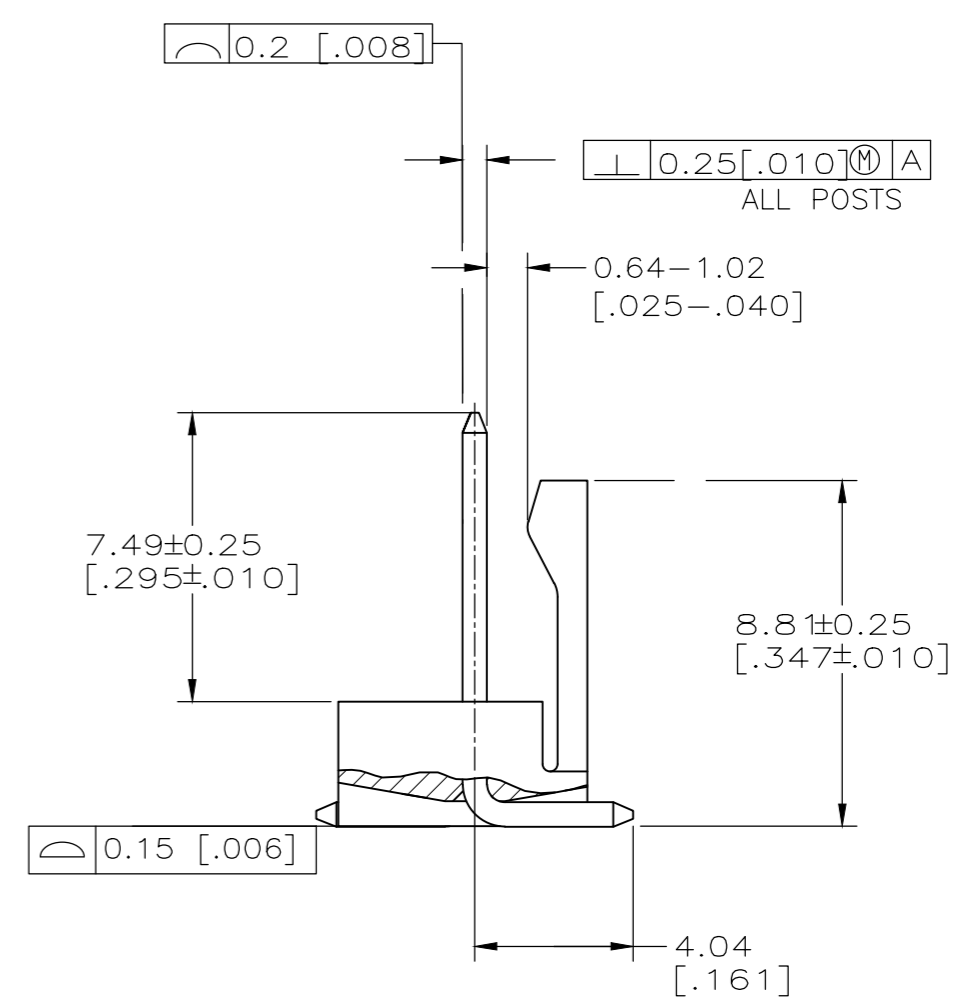
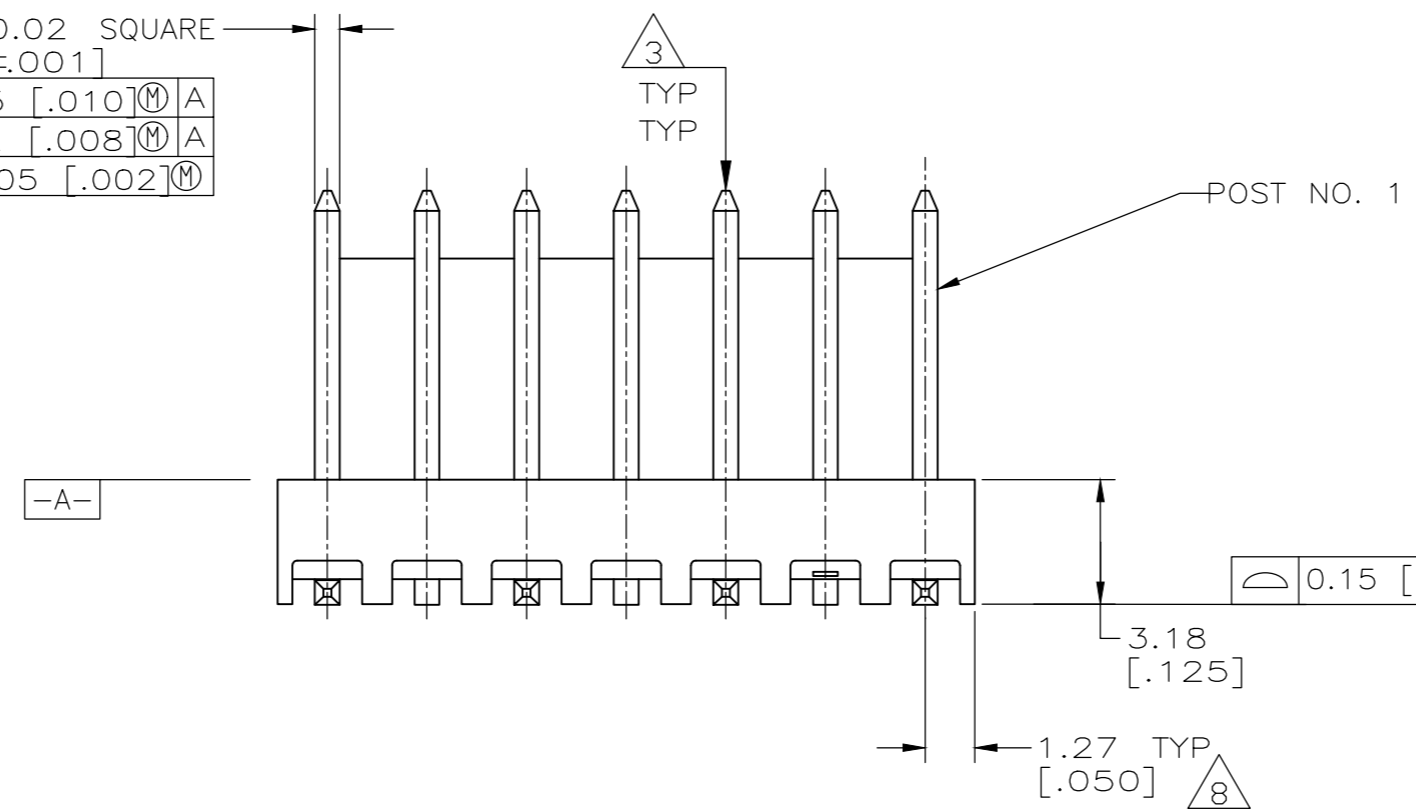
THIS DRAWING IS A CONTROLLED DOCUMENT.		DWN jr_ruth 30MAR11	TE Connectivity	
DIMENSIONS: mm [INCHES]		CHK SAM MACE 30MAR11		
TOLERANCES UNLESS OTHERWISE SPECIFIED:		APVD SAM MACE 30MAR11	NAME	
0 PLC ± -		PRODUCT SPEC	MTA-100 HEADER ASSY, SURFACE MOUNT, FRICTION LOCK, TAPE LOADED W/CAP	
1 PLC ± -		APPLICATION SPEC	-	
2 PLC ± -		SIZE	CAGE CODE	DRAWING NO
3 PLC ± .015		114-1019	00779	C-1744163
4 PLC ± -		WEIGHT	RESTRICTED TO	
ANGLES ± 1°		A2		
FINISH		CUSTOMER DRAWING		
-		SCALE	SHEET	REV
		3:1	4 of 5	B5

THIS DRAWING IS UNPUBLISHED. RELEASED FOR PUBLICATION
 © COPYRIGHT - By ALL RIGHTS RESERVED.

REVISIONS				
P	LTR	DESCRIPTION	DATE	APVD
-	-	SEE SHEET 1	-	-



6	7	0.64±0.02 SQUARE [.025±.001]
		0.25 [.010] M A
		0.2 [.008] M A
		0.05 [.002] M



RECOMMENDED P.C. BOARD LAYOUT
 FOR USE WITH 0.25 [.010] THICK STENCIL
 SCALE 5:1

HEADER ASSEMBLY

5.08 [.200]	2	3-1744163-2
17.78 [.700]	7	3-1744163-7
10.16 [.400]	4	3-1744163-4
7.62 [.300]	3	3-1744163-3
DIM "L"	NO OF POSITION	PART NO

THIS DRAWING IS A CONTROLLED DOCUMENT.		DWN jr ruth 30MAR11	TE Connectivity	
DIMENSIONS: mm [INCHES]		CHK SAM MACE 30MAR11	NAME MTA-100 HEADER ASSY, SURFACE MOUNT, FRICTION LOCK, TAPE LOADED W/CAP	
TOLERANCES UNLESS OTHERWISE SPECIFIED: 0 PLC ± - 1 PLC ± - 2 PLC ± - 3 PLC ± .015 4 PLC ± - ANGLES ± 1°		APVD SAM MACE 30MAR11	PRODUCT SPEC 108-1050	
MATERIAL		APPLICATION SPEC 114-1019	SIZE A2	RESTRICTED TO
FINISH		WEIGHT	CAGE CODE 00779	DRAWING NO 1744163
		CUSTOMER DRAWING		SCALE 3:1 SHEET 5 of 5 REV B5

X-ON Electronics

Largest Supplier of Electrical and Electronic Components

Click to view similar products for [Headers & Wire Housings](#) category:

Click to view products by [TE Connectivity](#) manufacturer:

Other Similar products are found below :

[892-18-020-10-001101](#) [58102-G61-06LF](#) [582553-1](#) [0009485154](#) [009176003701906](#) [0050291907](#) [LY20-4P-DT1-P1E-BR](#) [02.125.8002.8](#)
[609-3404](#) [61062-3](#) [61082-181009](#) [622-3653LF](#) [63453-116](#) [636-1030](#) [636-1427](#) [636-3427](#) [636-4007](#) [641938-9](#) [641991-4](#) [644827-2](#) [65817-](#)
[010LF](#) [65817-015LF](#) [65863-015LF](#) [66207-023LF](#) [67095-007LF](#) [67601157](#) [68645-018](#) [68648-049](#) [70.362.1628.0](#) [70-4210](#) [70-4226B](#) [70-](#)
[4853B](#) [707-5020](#) [707-5028](#) [71.350.2428.0](#) [71918-208LF](#) [71961-016LF](#) [733-134](#) [733-162](#) [754199-000](#) [760-3052](#) [79531-3000](#) [FCN-](#)
[360C032-B](#) [FCN-367T-T012/H](#) [FCN-723D010/2](#) [80.063.4001.1](#) [800-90-010-10-002000](#) [801-43-002-10-013000](#) [801-43-006-10-002000](#)
[801-93-011-10-001000](#)