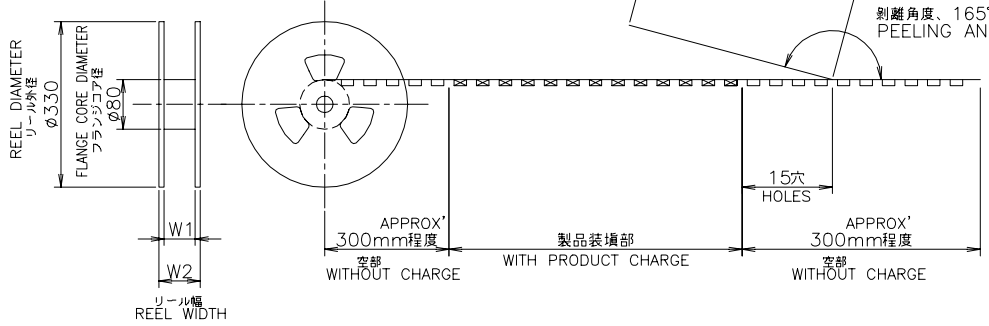
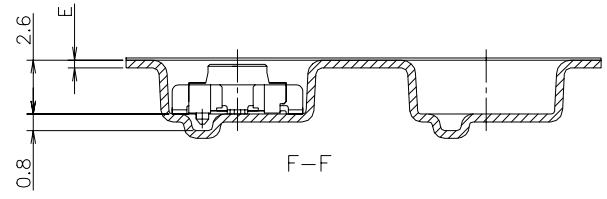
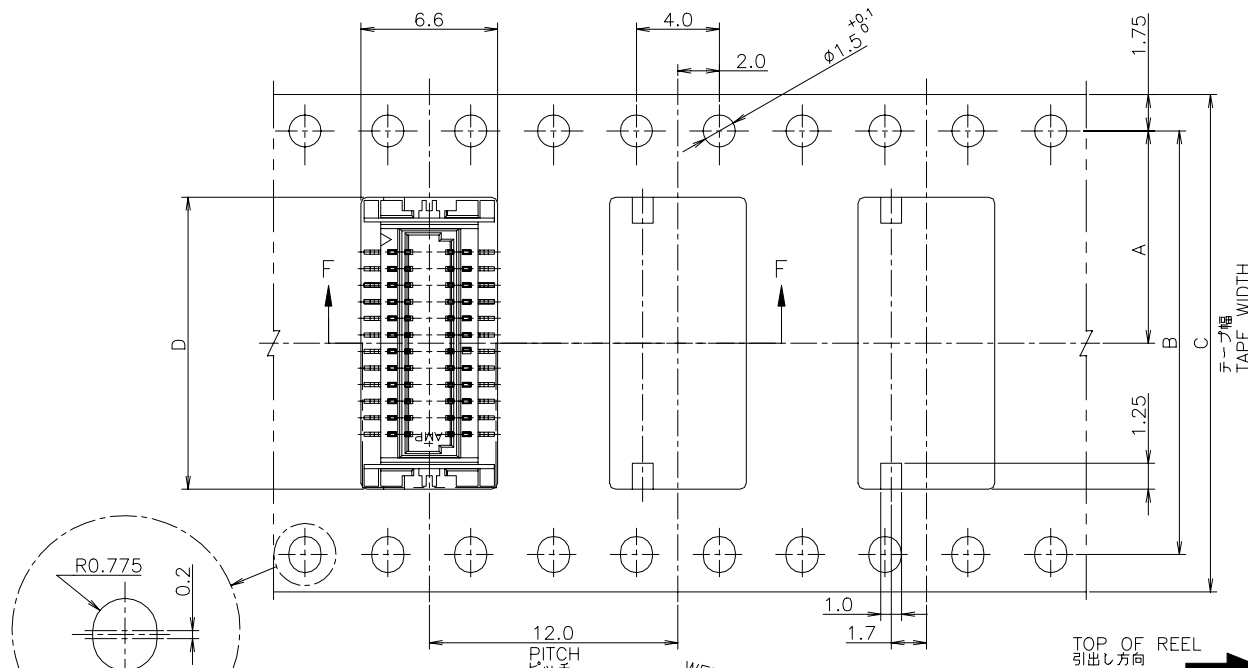


REVISIONS					
P	LTR	DESCRIPTION	DATE	DWN	APVD
	M2	ECO-20-009896:EOL 2-179397-4	21DEC2020	A.L	H.L

AS SHOWN 24 POS.

指示穴は40極品以上に適用。
 THESE HOLES ARE APPLIED TO 40 POS OR MORE.



	黒 BLACK	29.5	25.5	0.38	16.5	24	11.5	1500	30	3-179397-5
	BEIGE	49.5	45.5	0.38	24.5	44	20.2	1500	50	5-179397-0
		37.5	33.5		20.5	32	14.2		40	4-0
					16.5				30	3-0
M2		29.5	25.5		14.1	24	11.5		24	2-4
					10.9				16	1-6
		21.5	17.5	0.38	10.1				14	1-4
	ベージュ BEIGE	22.4	16.4	0.4	9.3	16	7.5	1500	12	1-179397-2

INSTRUCTION SHEET
取付説明書
411-5654

COLOR		DIMENSIONS						数量 (ヶ) QTY/REEL	極数 POS	リール巻コネクタ型番 TAPING P/N
色	W2	W1	E	D	C	B	A			

THIS DRAWING IS A CONTROLLED DOCUMENT.

DIMENSIONS: 単位: 耗 mm

TOLERANCES UNLESS OTHERWISE SPECIFIED: 一般公差

0 PLC	± 0.2
1 PLC	± 0.2
2 PLC	± 0.2
3 PLC	± 0.2
4 PLC	± 0.2
ANGLES	± 3°

MATERIAL 材料

FINISH 仕上

APVD S.KUBOUCHI 01NOV96

PRODUCT SPEC 製品規格 108-5424

APPLICATION SPEC 取付適用規格

WEIGHT

CUSTOMER DRAWING

DWN K.ASAKAWA 24FEB94

CHK S.KUBOUCHI 24FEB94

NAME 名称 ON TAPING EMBOSS CAP ASSY WITH BOSS

SIZE A3

CAGE CODE 00779

DRAWING NO. 番号 C=179397

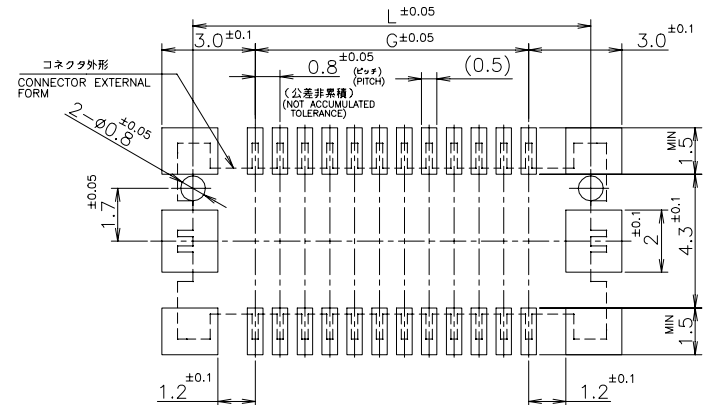
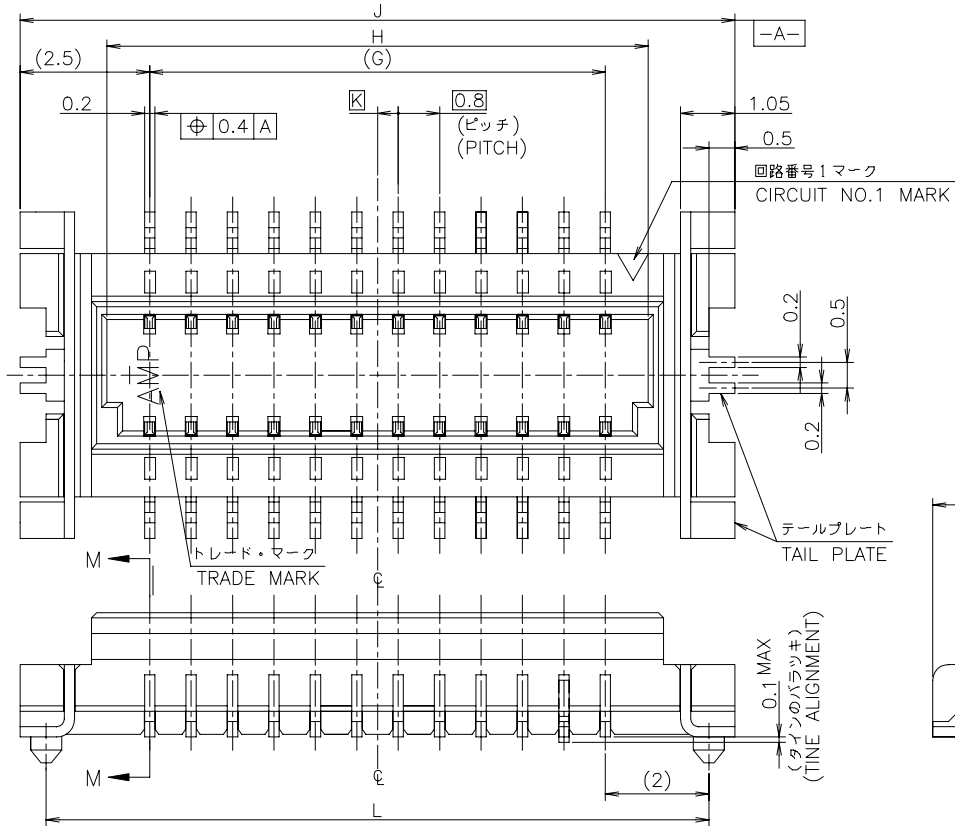
RESTRICTED TO

SCALE 尺度 4:1

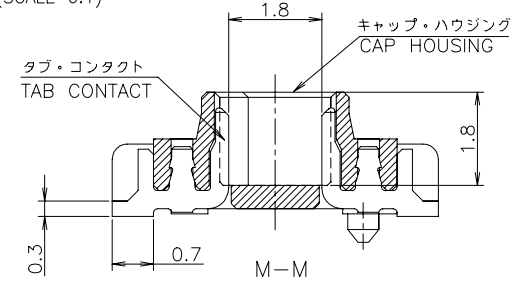
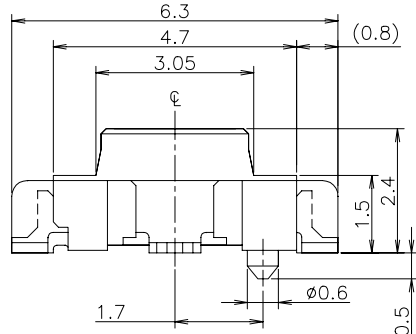
SHEET 1 of 2

REV M2

REVISIONS					
変更					
P	LTR	DESCRIPTION	DATE	DWN	APVD
-	-	SEE SHEET 1	-	-	-



参考基板加工寸法 (t=0.6 MIN.)
REFERENCE P.C. BOARD LAYOUT
(SCALE 6:1)



0.241	15.2	---	16.2	12.8	11.2	30
0.361	23.2	---	24.2	20.8	19.2	50
0.301	19.2	0.4	20.2	16.8	15.2	40
0.241	15.2	---	16.2	12.8	11.2	30
0.205	12.8	0.4	13.8	10.4	8.8	24
0.157	9.6	0.4	10.6	7.2	5.6	16
0.145	8.8	---	9.8	6.4	4.8	14
0.133	8.0	0.4	9.0	5.6	4.0	12
重量 (g) WEIGHT	L	K	J	H	G	極数 POS

△ 材料: ハウジング - 6T NYLON (高耐熱性ナイロン)
ガラス30%, 色: ベージュ
コンタクト - 燐青銅・錫めっき(0.2t)
テールプレート - 燐青銅・錫めっき(0.2t)

△ MATERIAL: HOUSING - 6T NYLON (HIGH HEAT-RESISTED NYLON), GF30%,
COLOR: BEIGE.
CONTACT - POST-TIN/PHOS-BROZ(0.2t)
TAIL PLATE - POST-TIN/PHOS-BROZ(0.2t)

THIS DRAWING IS A CONTROLLED DOCUMENT.

DIMENSIONS: 単位: 耗 mm	TOLERANCES UNLESS OTHERWISE SPECIFIED: 一般公差
0 PLC ± 0.2	1 PLC ± 0.2
2 PLC ± 0.2	3 PLC ± 0.2
4 PLC ± 0.2	ANGLES ± 3'
MATERIAL 材料	FINISH 仕上
SEE NOTE △ 注△参照	SEE NOTE △ 注△参照

DWN	CHK	APVD	PRODUCT SPEC 製品規格	APPLICATION SPEC 取付適用規格	WEIGHT	CUSTOMER DRAWING
-----	-----	------	----------------------	----------------------------	--------	------------------

TE TE Connectivity Ltd.

NAME 名称
ON TAPING EMBOSS CAP ASSY WITH BOSS
0.8mm PITCH BTB CONN
MATING HEIGHT 3.0mm

SIZE A3 CAGE CODE 00779 DRAWING NO. 番号 G=179397 RESTRICTED TO

SCALE 尺度 10:1 SHEET 2 OF 2 REV M2

X-ON Electronics

Largest Supplier of Electrical and Electronic Components

Click to view similar products for [Board to Board & Mezzanine Connectors](#) category:

Click to view products by [TE Connectivity](#) manufacturer:

Other Similar products are found below :

[10135583-642402LF](#) [89885-310LF](#) [589158040000018](#) [6-1393048-0](#) [68683-613](#) [MDF7-12DP-2.54DSA](#) [MDF7-18P-2.54DSA\(01\)](#) [MDF7-20DP-2.54DSA](#) [MDF7-26D-2.54DSA\(55\)](#) [MDF7-3P-2.54DSA\(01\)](#) [MDF7B-20P-2.54DSA\(01\)](#) [MDF7B-3P-2.54DSA\(55\)](#) [MDF7C-18P-2.54DSA\(55\)](#) [MDF7P-5P-2.54DSA\(55\)](#) [75234-0516](#) [FCN-230C068-11](#) [FCN-268F012-G/BD](#) [FCN-268F036-G/BD](#) [FCN-268M012-G/0D](#) [FCN-268M024-G/1D](#) [FCN-360C008-C](#) [FCN-723J004/1](#) [MIS-048-01-F-D-DP-K](#) [832-10-034-10-001000](#) [93696-325LF](#) [11828-1FA](#) [AXK630345P](#) [18097-0013](#) [2007042-2](#) [304400-2](#) [FCN-214Q030-G/0](#) [FCN-215Q040-G/0](#) [FCN-230C068-ESA](#) [FCN-234P048-G/0](#) [FCN-235D050-G/C](#) [FCN-360A3](#) [FCN-360C040-B](#) [210-93-314-41-105000](#) [2-22603-0](#) [379-064-521-202](#) [MDF7-12P-2.54DSA\(01\)](#) [MDF7-16P-2.54DS\(56\)](#) [MDF7-16P-2.54DSA\(55\)](#) [MDF7-40DP-2.54DSA\(55\)](#) [MDF7-8P-2.54DSA\(55\)](#) [AXG720047](#) [5031084030](#) [55323-1519](#) [DF33-2P-3.3DSA\(24\)](#) [DF33-2S-3.3C](#)