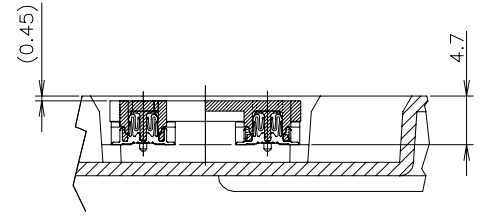
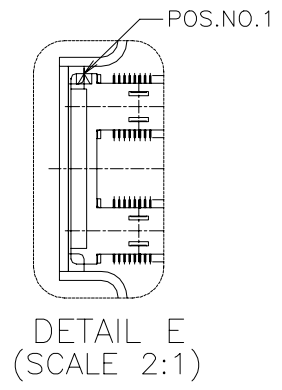
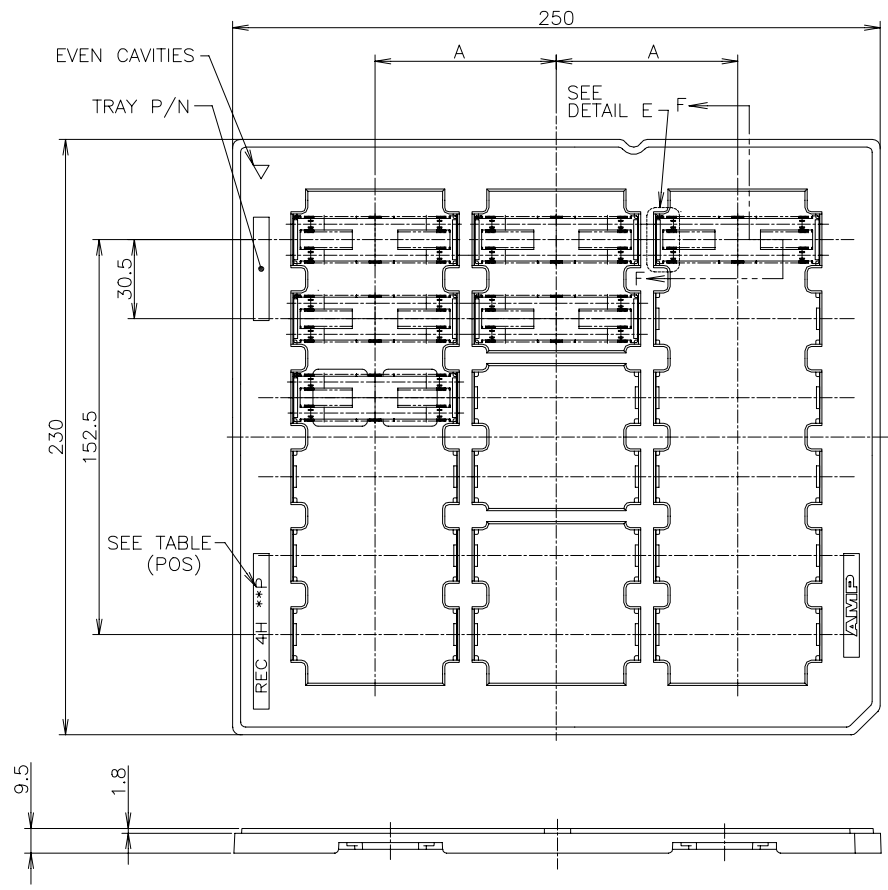


REVISIONS					
P	LTR	DESCRIPTION	DATE	DWN	APVD
	F	ECO-20-005660: DEFAULT TOL/PLT CHANGE	20MAY2020	A.L	H.L



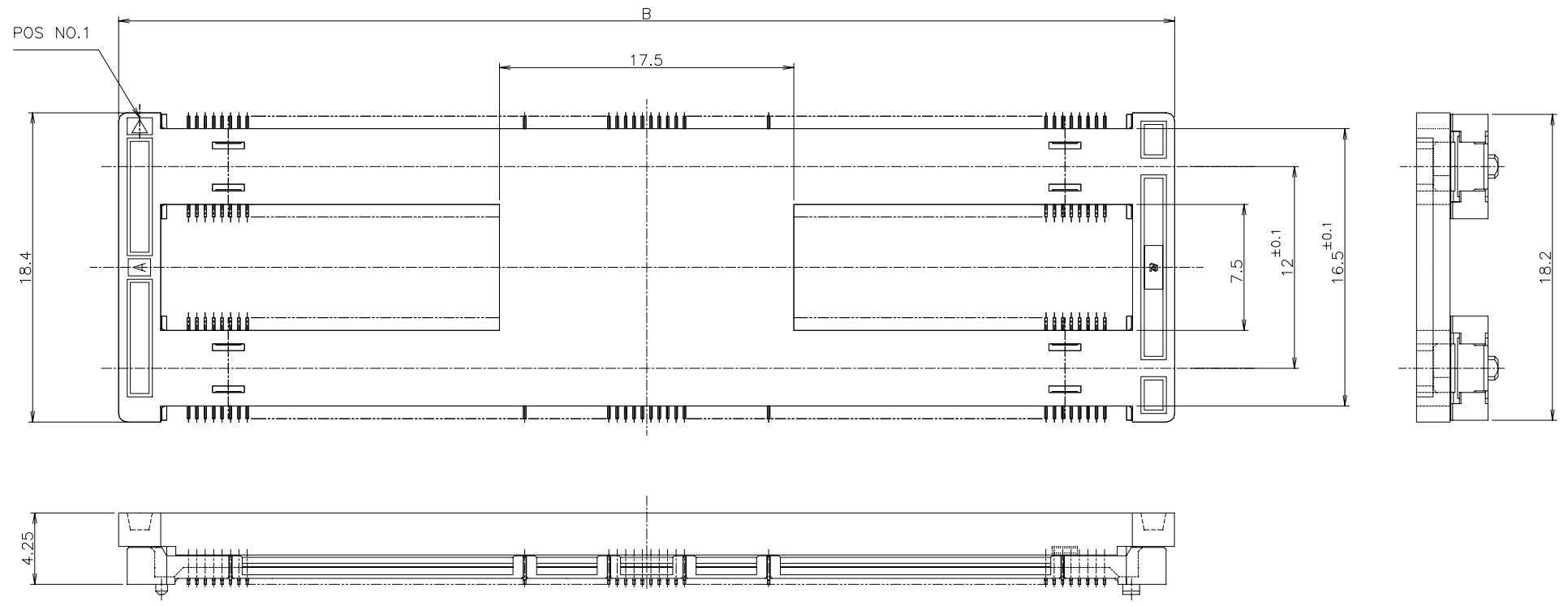
SECT. F-F  
(SCALE 2:1)  
ROTATED 90° CW

NO	3	18	75	440	9-1827231-6
NO	3	18	75	440	3-1827231-6
SEALANT	ROW	QTY	A	POS.	PART NO.

THIS DRAWING IS A CONTROLLED DOCUMENT.		DWN S. CHIEN 18MAY05	TE Connectivity Ltd.		
		CHK T. FUTATSUGI 18MAY05			
DIMENSIONS: MM		APVD W. KODAMA 18MAY05	NAME		
		PRODUCT SPEC 108-5560	HARD TRAY ASSY		
TOLERANCES UNLESS OTHERWISE SPECIFIED:		APPLICATION SPEC	FH 0.5BTB CONNECTOR 440POS		
0 PLC ± 0.25		WEIGHT	REC 4H W/G-PLATE ON 2 ROW CAP		
1 PLC ± 0.15		CUSTOMER DRAWING	SIZE A3	CAGE CODE 00779	DRAWING NO G=1827231
2 PLC ± 0.10		SCALE 1:2	RESTRICTED TO		REV F
3 PLC ± 0.05		SHEET 1 OF 4			
4 PLC ± 0.0250					
ANGLES ± 3'					
MATERIAL					
FINISH					

REVISIONS

P	LTR	DESCRIPTION	DATE	DWN	APVD
-	-	SEE SHEET 1	-	-	-



BLACK	62.8	440	9-1827231-6
BLACK	62.8	440	3-1827231-6
CAP COLOR	B	POS	PART NO.

THIS DRAWING IS A CONTROLLED DOCUMENT.

DIMENSIONS: MM	TOLERANCES UNLESS OTHERWISE SPECIFIED:	DWN	NAME
0 PLC ± 0.25	1 PLC ± 0.15	CHK	
2 PLC ± 0.10	3 PLC ± 0.05	APVD	
4 PLC ± 0.0250	ANGLES ± 3°	PRODUCT SPEC	
MATERIAL	FINISH	APPLICATION SPEC	
1	2	WEIGHT	
		CUSTOMER DRAWING	

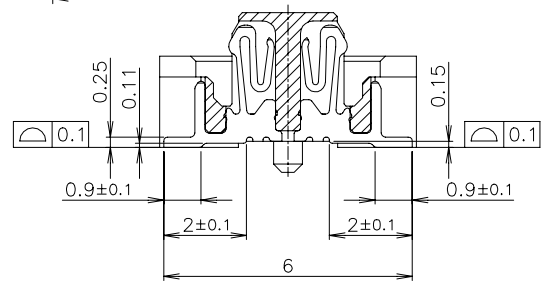
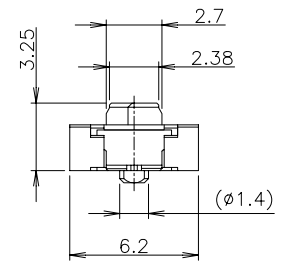
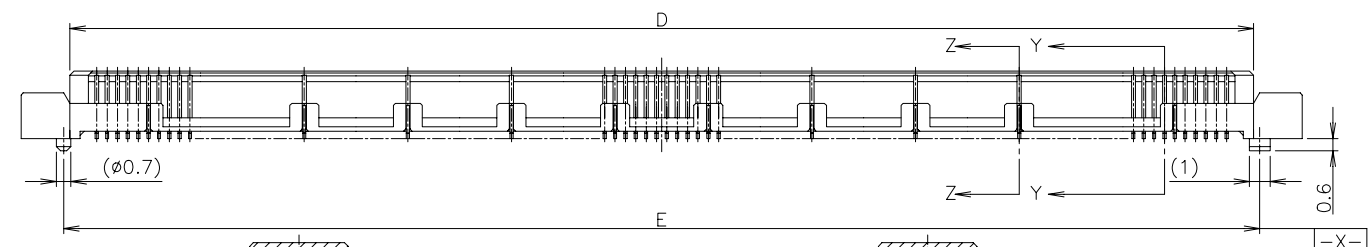
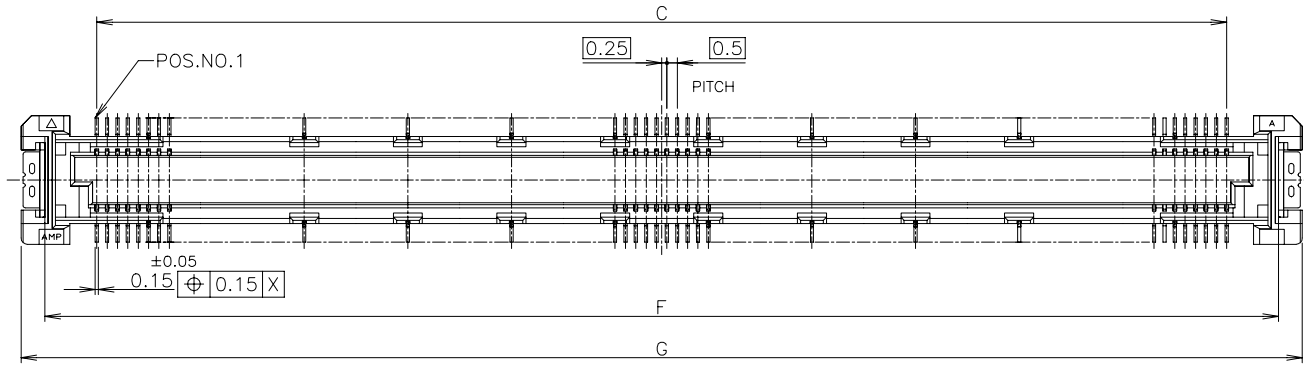
**TE** TE Connectivity Ltd.

HARD TRAY ASSY  
FH 0.5BTB CONNECTOR 440POS  
REC 4H W/G-PLATE ON 2 ROW CAP

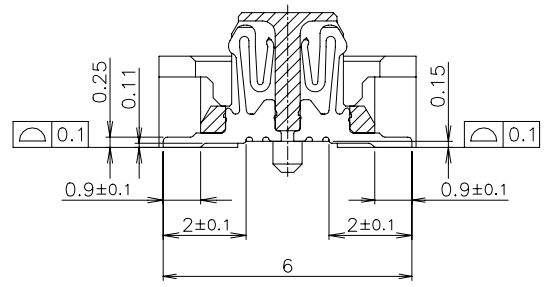
SIZE	CAGE CODE	DRAWING NO	RESTRICTED TO
A3	00779	G=1827231	

SCALE 4:1 SHEET 2 OF 4 REV F

P	LTR	DESCRIPTION	DATE	DWN	APVD
-	-	SEE SHEET 1	-	-	-



SECT. Z-Z  
(GROUND POSITION)  
(SCALE 8:1)



SECT. Y-Y  
(SIGNAL POSITION)  
(SCALE 8:1)

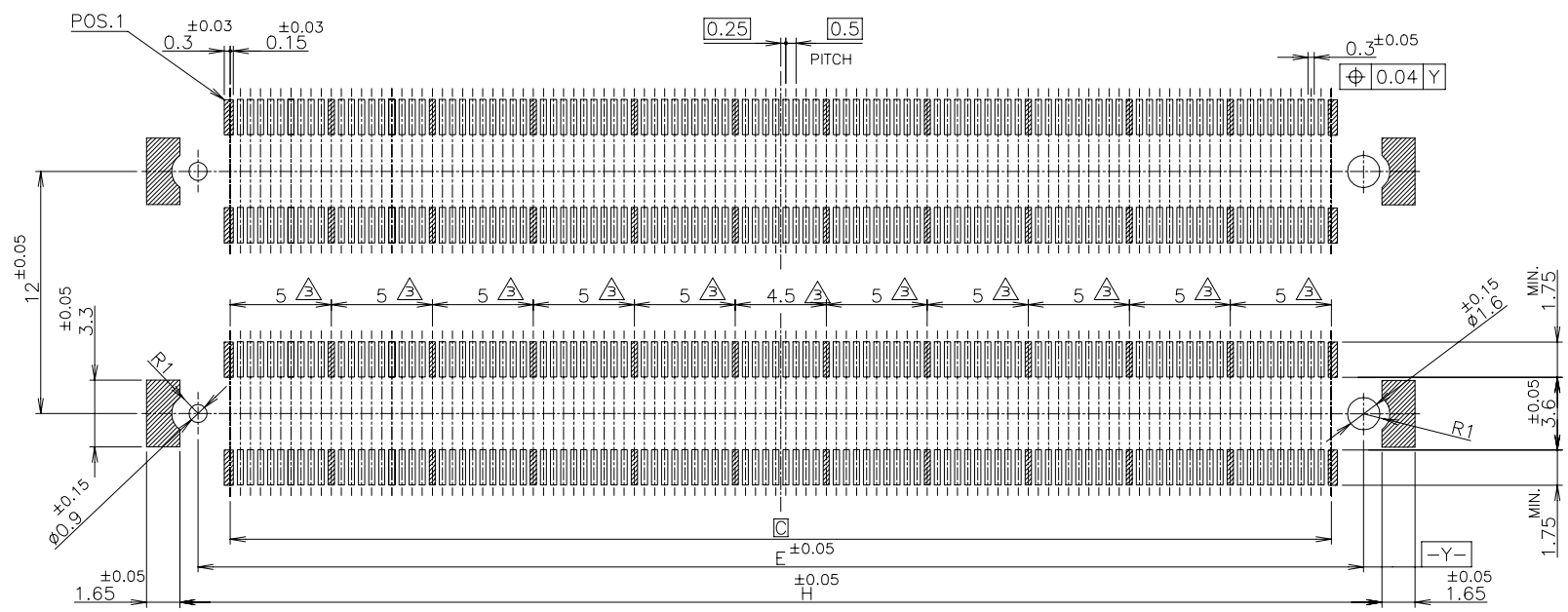
NOTES

- 1 MATERIAL ; HOUSING : HIGH TEMP THERMO PLASTIC UL94V-0  
CONTACT : COPPER ALLOY; SOLDER PEG : COPPER ALLOY
- 2 FINISH ; MATING AREA: MEETS THE PERFORMANCE REQUIREMENTS OF  
PRODUCT SPECIFICATION 108-5560;  
SOLDER TAIL OF SIGNAL & GROUND CONTACTS : GOLD FLASH;  
SOLDER PEG : TIN OVER Ni
- 3 THIS POSITION IS GROUND CIRCUIT.

0.00076	61.8	59.5	57.7	57.1	54.5	220	BLACK	9-1827231-6
0.0002	61.8	59.5	57.7	57.1	54.5	220	BLACK	3-1827231-6
AU THICKNESS (MATING AREA)	G	F	E	D	C	POS.	HSG COLOR	PART NO.

THIS DRAWING IS A CONTROLLED DOCUMENT.		DWN	TE Connectivity Ltd.				
DIMENSIONS: MM		CHK					
TOLERANCES UNLESS OTHERWISE SPECIFIED:		APVD	NAME HARD TRAY ASSY FH 0.5BTB CONNECTOR 440POS REC 4H W/G-PLATE ON 2 ROW CAP				
0 PLC ± 0.25 1 PLC ± 0.15 2 PLC ± 0.10 3 PLC ± 0.05 4 PLC ANGLES ± 0.0250 ± 3°		PRODUCT SPEC					
MATERIAL		APPLICATION SPEC	SIZE	CAGE CODE	DRAWING NO	RESTRICTED TO	
FINISH		WEIGHT	A3	00779	C=1827231		
CUSTOMER DRAWING		SCALE	4:1	SHEET	3 OF 4	REV	F

REVISIONS					
P	LTR	DESCRIPTION	DATE	DWN	APVD
-	-	SEE SHEET 1	-	-	-



REFERENCE P.C.BOARD LAYOUT

59.5	440	9-1827231-6
59.5	440	3-1827231-6
H	POS	PART NO.

THIS DRAWING IS A CONTROLLED DOCUMENT.		DWN	TE Connectivity Ltd.											
DIMENSIONS: MM		CHK												
TOLERANCES UNLESS OTHERWISE SPECIFIED:		APVD												
<table border="0"> <tr> <td>0 PLC</td> <td>± 0.25</td> </tr> <tr> <td>1 PLC</td> <td>± 0.15</td> </tr> <tr> <td>2 PLC</td> <td>± 0.10</td> </tr> <tr> <td>3 PLC</td> <td>± 0.05</td> </tr> <tr> <td>4 PLC</td> <td>± 0.0250</td> </tr> <tr> <td>ANGLES</td> <td>± 3'</td> </tr> </table>		0 PLC			± 0.25	1 PLC	± 0.15	2 PLC	± 0.10	3 PLC	± 0.05	4 PLC	± 0.0250	ANGLES
0 PLC	± 0.25													
1 PLC	± 0.15													
2 PLC	± 0.10													
3 PLC	± 0.05													
4 PLC	± 0.0250													
ANGLES	± 3'													
MATERIAL		PRODUCT SPEC	HARD TRAY ASSY											
FINISH		APPLICATION SPEC	FH 0.5BTB CONNECTOR 440POS											
<table border="0"> <tr> <td>1</td> <td>2</td> </tr> </table>		1	2	WEIGHT	REC 4H W/G-PLATE ON 2 ROW CAP									
1	2													
CUSTOMER DRAWING		SIZE	CAGE CODE	DRAWING NO										
		A3	00779	C=1827231										
		RESTRICTED TO												
		SCALE	SHEET	REV										
		4:1	4 OF 4	F										

## X-ON Electronics

Largest Supplier of Electrical and Electronic Components

*Click to view similar products for [Board to Board & Mezzanine Connectors](#) category:*

*Click to view products by [TE Connectivity](#) manufacturer:*

Other Similar products are found below :

[589158040000018](#) [MDF7C-18P-2.54DSA\(55\)](#) [FCN-230C068-11](#) [FCN-268F012-G/BD](#) [FCN-268F036-G/BD](#) [FCN-268M012-G/0D](#) [FCN-268M024-G/1D](#) [FCN-723J004/1](#) [MIS-048-01-F-D-DP-K](#) [832-10-034-10-001000](#) [FX4C-80S-1.27DSA](#) [FCN-214Q030-G/0](#) [FCN-234P048-G/0](#) [FCN-235D050-G/C](#) [210-93-314-41-105000](#) [2-22603-0](#) [MDF7-40DP-2.54DSA\(55\)](#) [AXG720047](#) [5031084030](#) [MIT-114-03-F-D-K](#) [55323-1519](#) [DF33-2P-3.3DSA\(24\)](#) [YFT-20-05-H-03-SB-K](#) [503308-3040](#) [026-6203-PDB](#) [027-6203-PDB](#) [069159702701000](#) [10123981-102LF](#) [101A10019X](#) [55650-0588-C](#) [68682-310LF](#) [68684-306](#) [75140-7012](#) [87471-650](#) [194261-1](#) [FCN-268F024-G0D](#) [10124054-515LF](#) [68685-603](#) [8-1616154-3](#) [MIS-019-01-F-D](#) [FCN-268M024-G/3D](#) [20021832-06016C1LF](#) [KX15-20KLDL-E1000E](#) [MDF7-16DP-2.54DSA\(55\)](#) [AXE810124](#) [FCN-214J100-G/0](#) [FCN-230C068-E/S](#) [AXE812124](#) [AXE816124](#) [AXE720127](#)