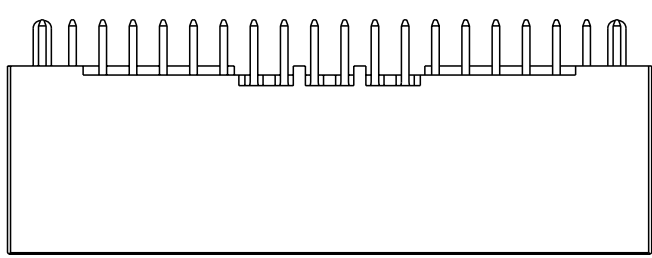
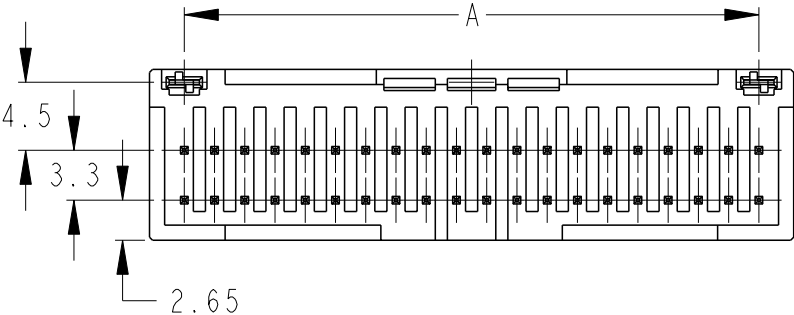
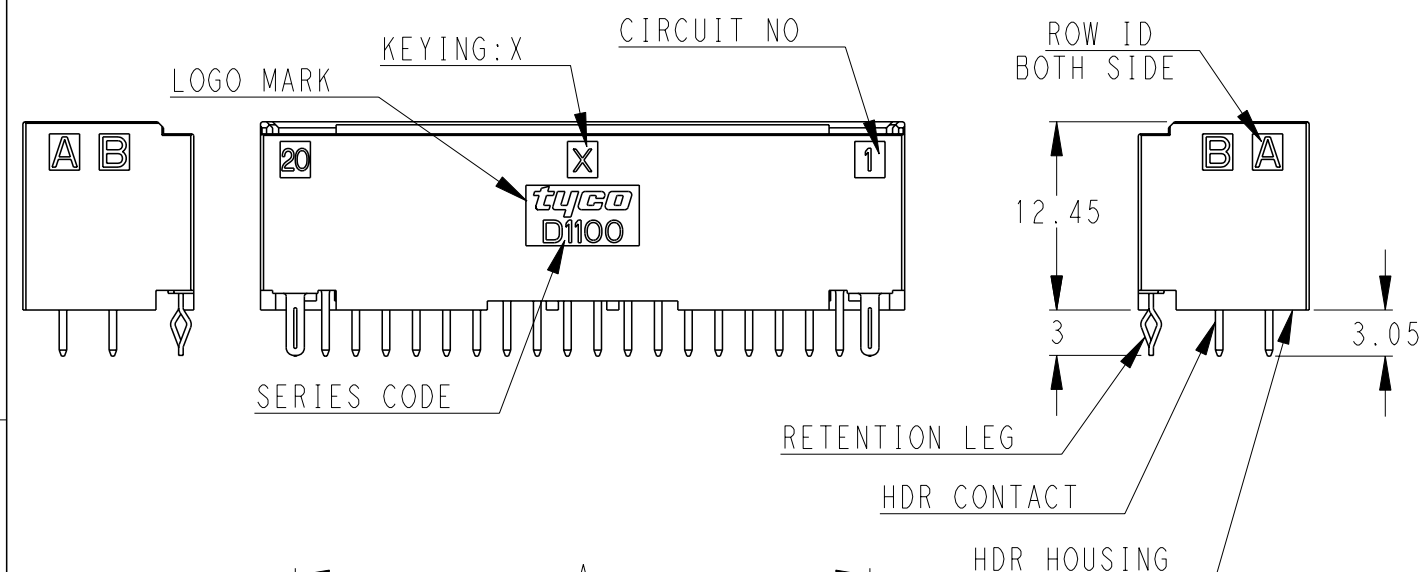
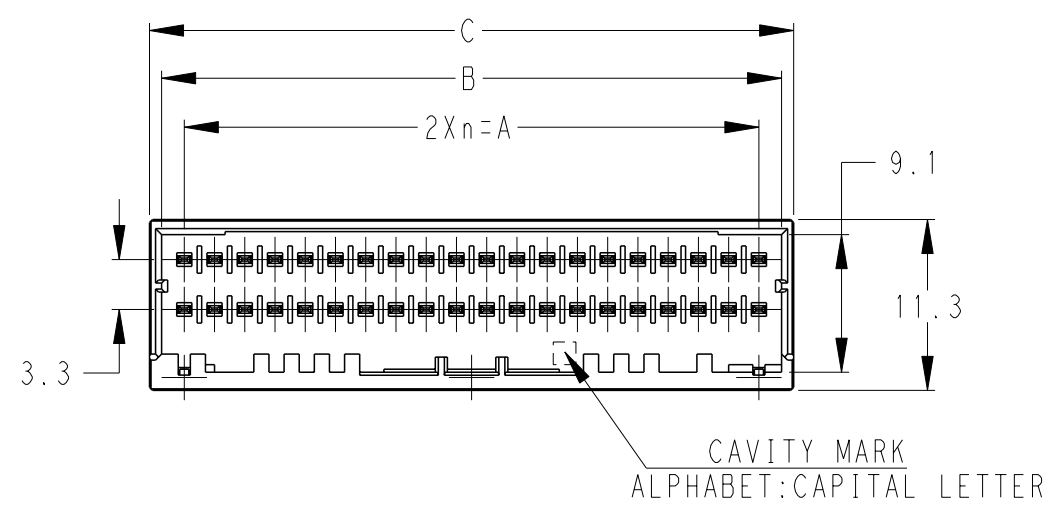
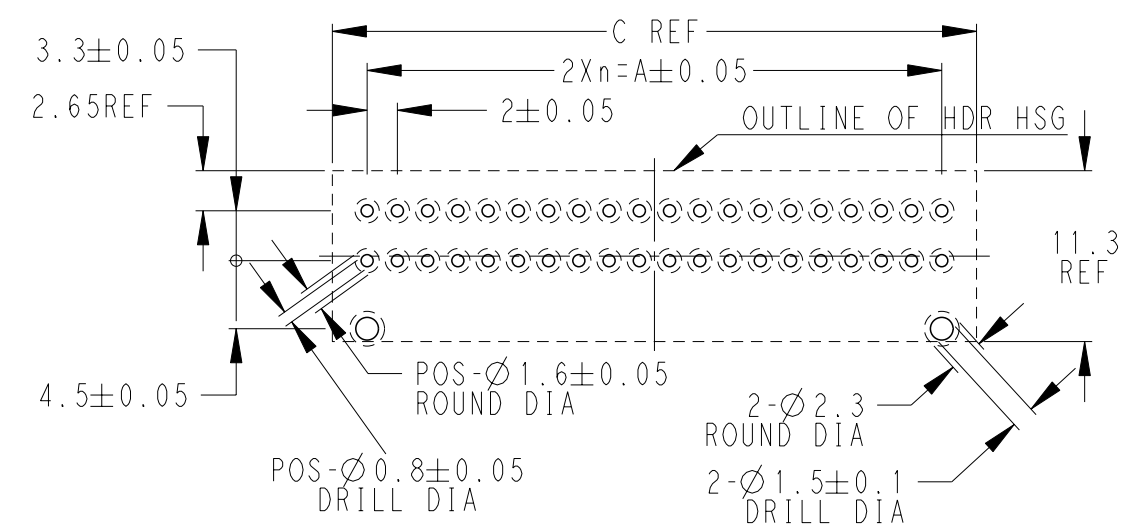


THIS DRAWING IS UNPUBLISHED. RELEASED FOR PUBLICATION 20  
 © COPYRIGHT 20 BY Tyco Electronics Japan G.K. ALL RIGHTS RESERVED.

LOC	DIST	REVISIONS					
J	-	P	LTR	DESCRIPTION	DATE	DWN	APVD
			E	REVISED	14JUN2011	M.M	N.Y
			E1	REVISED PER ECR-17-007048	16MAY2017	N.W	C.W



40POS(X-KEY):  
 1-1871056-0(NATURAL)  
 3-1871056-0(YELLOW)  
 5-1871056-0(RED)



RECOMMEND PC BOARD HOLE PATTERN  
 : CONNECTOR MOUNT SIDE(NOT ACCUMULATE TOLERANCE)  
 PC BOARD THICKNESS : 1.0~1.6±0.1

- 1-1871056-□ : NATURAL (X-KEY) PRE-TIN
- 3-1871056-□ : YELLOW (X-KEY) PRE-TIN
- 5-1871056-□ : RED (X-KEY) PRE-TIN
- 6-1871056-□ : BLACK (X-KEY) TIN PLATED

40	X	19	38.0	41.0	42.6	BLACK	6-1871056-0
40	X	19	38.0	41.0	42.6	RED	5-1871056-0
40	X	19	38.0	41.0	42.6	YELLOW	3-1871056-0
40	X	19	38.0	41.0	42.6	NATURAL	1-1871056-0
34	X	16	32.0	35.0	36.6	BLACK	6-1871056-7
32	X	15	30.0	33.0	34.6	BLACK	6-1871056-6
32	X	15	30.0	33.0	34.6	NATURAL	1-1871056-6
30	X	14	28.0	31.0	32.6	BLACK	6-1871056-5
30	X	14	28.0	31.0	32.6	YELLOW	3-1871056-5
30	X	14	28.0	31.0	32.6	NATURAL	1-1871056-5
28	X	13	26.0	29.0	30.6	BLACK	6-1871056-4
28	X	13	26.0	29.0	30.6	RED	5-1871056-4
26	X	12	24.0	27.0	28.6	BLACK	6-1871056-3
26	X	12	24.0	27.0	28.6	NATURAL	1-1871056-3
24	X	11	22.0	25.0	26.6	BLACK	6-1871056-2
24	X	11	22.0	25.0	26.6	YELLOW	3-1871056-2
22	X	10	20.0	23.0	24.6	BLACK	6-1871056-1
22	X	10	20.0	23.0	24.6	YELLOW	3-1871056-1
POS KEY	n	A	B	C	COLOR	PART NO	

1 MATERIAL:  
 HOUSING : GLASS FILLED THERMO PLASTIC  
 POLYESTER(94V-0), COLOR:EXCLUDING BLACK  
 CONTACT : PRE-TIN COPPER ALLOY,OR TIN PLATED ON COPPER ALLOY  
 RETENTION LEG : PRE-TIN COPPER ALLOY

THIS DRAWING IS A CONTROLLED DOCUMENT.		DWN T. KUDO 21APR2005	 TE Connectivity		NAME DYNAMIC 1100D 2.0mmPITCH HDR ASSY (V-TYPE) TIN PLATE-COLOR 22-40POS		
DIMENSIONS: mm		CHK D. MITSUGI 23AUG2005					
TOLERANCES UNLESS OTHERWISE SPECIFIED: ±0.3, ±5°		APVD D. MITSUGI 23AUG2005					
0-PLC ± 1-PLC ±0.1 2-PLC ±0.01 3-PLC ±0.001 4-PLC ±0.0001 ANGLES ±		PRODUCT SPEC 108-78298					
MATERIAL 1		FINISH -	APPLICATION SPEC 114-5377	SIZE A3	CAGE CODE 00779	DRAWING NO C-1871056	RESTRICTED TO -
CUSTOMER DRAWING			WEIGHT -	SCALE 2:1	SHEET 1 OF 3	REV E1	

THIS DRAWING IS UNPUBLISHED.

RELEASED FOR PUBLICATION

20

© COPYRIGHT 20

BY Tyco Electronics Japan G.K.

ALL RIGHTS RESERVED.

LOC  
J

DIST  
-

REVISIONS

P LTR

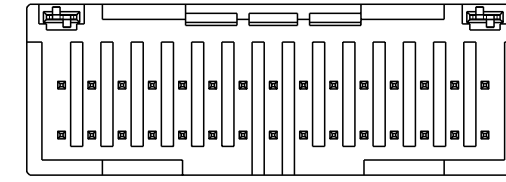
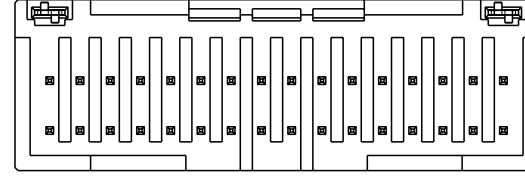
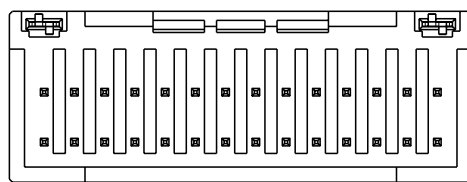
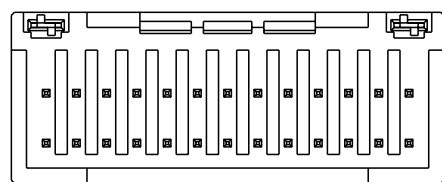
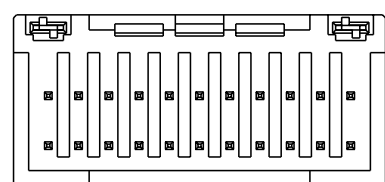
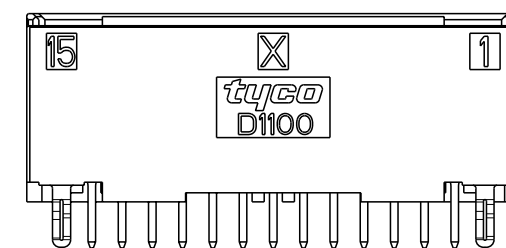
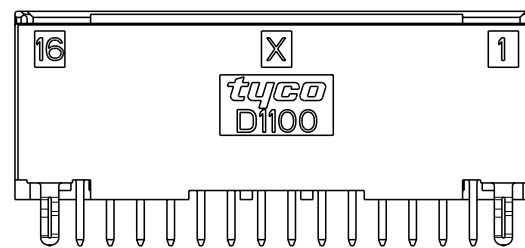
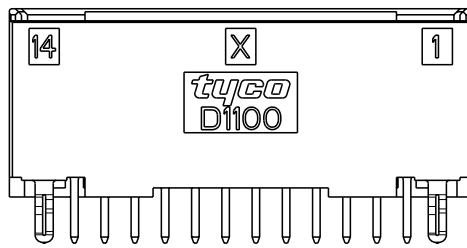
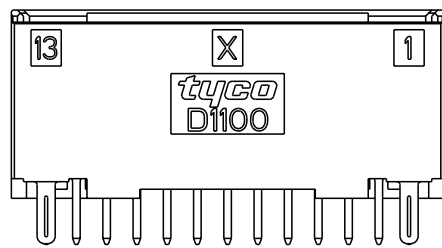
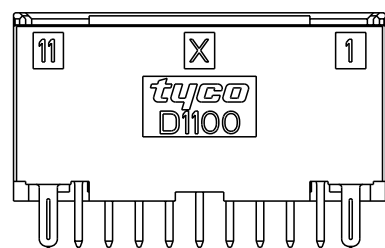
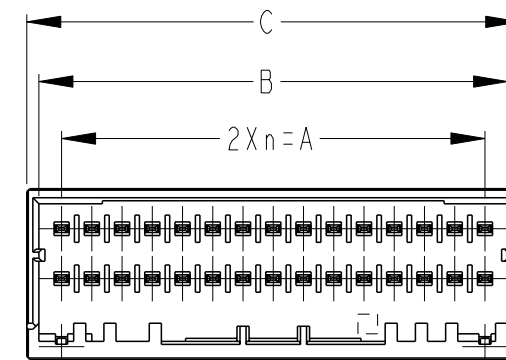
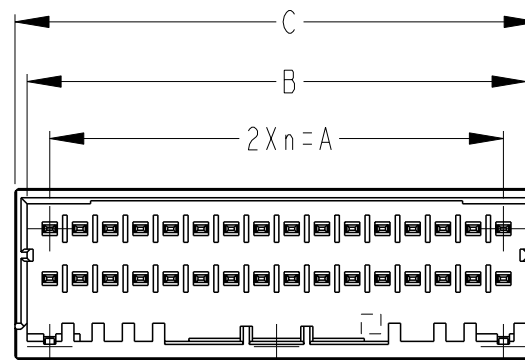
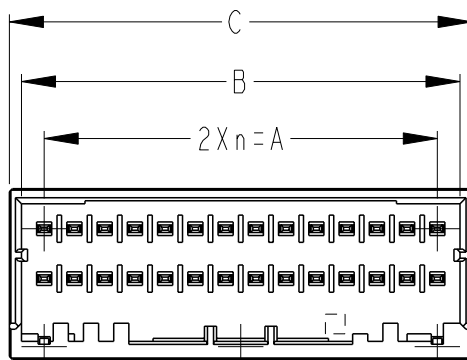
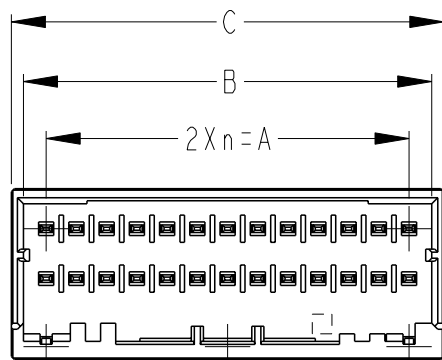
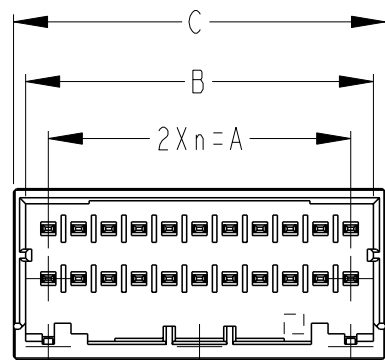
DESCRIPTION

DATE

DWN

APVD

SEE SHEET 1 OF 3



22POS(X-KEY):  
3-1871056-1(YELLOW)

26POS(X-KEY):  
1-1871056-3(NATURAL)

28POS(X-KEY):  
5-1871056-4(RED)

32POS(X-KEY):  
1-1871056-6(NATURAL)

30POS(X-KEY):  
1-1871056-5(NATURAL)  
3-1871056-5(YELLOW)

THIS DRAWING IS A CONTROLLED DOCUMENT.

DIMENSIONS:  
mm



TOLERANCES UNLESS OTHERWISE SPECIFIED:

0 PLC	±
1 PLC	±
2 PLC	±
3 PLC	±
4 PLC	±
ANGLES	±
FINISH	-

MATERIAL

-

DWN T. KUDO 21APR2005

CHK D. MITSUGI 23AUG2005

APVD D. MITSUGI 23AUG2005

PRODUCT SPEC  
108-78298

APPLICATION SPEC  
114-5377

WEIGHT -

CUSTOMER DRAWING



TE Connectivity

NAME  
DYNAMIC 1100D 2.0mmPITCH  
HDR ASSY (V-TYPE)  
TIN PLATE-COLOR 22-40POS

SIZE A3	CAGE CODE 00779	DRAWING NO C-1871056	RESTRICTED TO -
------------	--------------------	-------------------------	--------------------

SCALE 2:1 SHEET 2 OF 3 REV E1

SEE SHEET 1 OF 3

THIS DRAWING IS UNPUBLISHED.

RELEASED FOR PUBLICATION

20

© COPYRIGHT 20

BY Tyco Electronics Japan G.K.

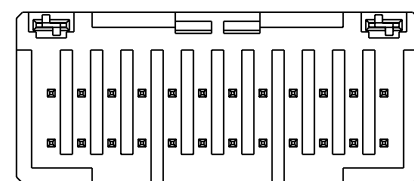
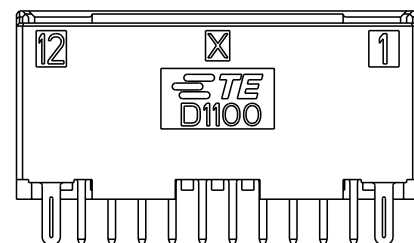
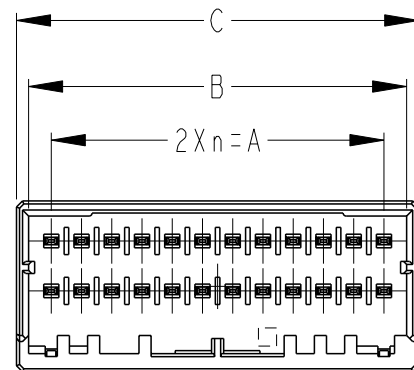
ALL RIGHTS RESERVED.

LOC  
J

DIST  
-

REVISIONS

P	LTR	DESCRIPTION	DATE	DWN	APVD
		SEE SHEET 1 OF 3			



24POS(X-KEY):  
3-1871056-2(YELLOW)

THIS DRAWING IS A CONTROLLED DOCUMENT.

DIMENSIONS:  
mm



TOLERANCES UNLESS OTHERWISE SPECIFIED:

- 0 PLC ±
- 1 PLC ±
- 2 PLC ±
- 3 PLC ±
- 4 PLC ±
- ANGLES ±

MATERIAL

-

FINISH

-

DWN T. KUDO 21APR2005

CHK D. MITSUGI 23AUG2005

APVD D. MITSUGI 23AUG2005

PRODUCT SPEC

108-78298

APPLICATION SPEC

114-5377

WEIGHT -

CUSTOMER DRAWING



TE Connectivity

NAME  
 DYNAMIC 1100D 2.0mmPITCH  
 HDR ASSY (V-TYPE)  
 TIN PLATE-COLOR 22-40POS

SIZE	CAGE CODE	DRAWING NO	RESTRICTED TO
------	-----------	------------	---------------

A3	00779	C-1871056	-
----	-------	-----------	---

SCALE	SHEET	OF	REV
2:1	3	3	E1

SEE SHEET 1 OF 3

## X-ON Electronics

Largest Supplier of Electrical and Electronic Components

*Click to view similar products for [Headers & Wire Housings](#) category:*

*Click to view products by [TE Connectivity](#) manufacturer:*

Other Similar products are found below :

[892-18-020-10-001101](#) [58102-G61-06LF](#) [582553-1](#) [0009485154](#) [009176003701906](#) [0050291907](#) [LY20-4P-DT1-P1E-BR](#) [02.125.8002.8](#)  
[609-3404](#) [61062-3](#) [61082-181009](#) [622-3653LF](#) [63453-116](#) [636-1030](#) [636-1427](#) [636-3427](#) [636-4007](#) [641938-9](#) [641991-4](#) [644827-2](#) [65817-](#)  
[010LF](#) [65817-015LF](#) [65863-015LF](#) [66207-023LF](#) [67095-007LF](#) [67601157](#) [68645-018](#) [68648-049](#) [70.362.1628.0](#) [70-4210](#) [70-4226B](#) [70-](#)  
[4853B](#) [707-5020](#) [707-5028](#) [71.350.2428.0](#) [71918-208LF](#) [71961-016LF](#) [733-134](#) [733-162](#) [754199-000](#) [760-3052](#) [79531-3000](#) [FCN-](#)  
[360C032-B](#) [FCN-367T-T012/H](#) [FCN-723D010/2](#) [80.063.4001.1](#) [800-90-010-10-002000](#) [801-43-002-10-013000](#) [801-43-006-10-002000](#)  
[801-93-011-10-001000](#)