

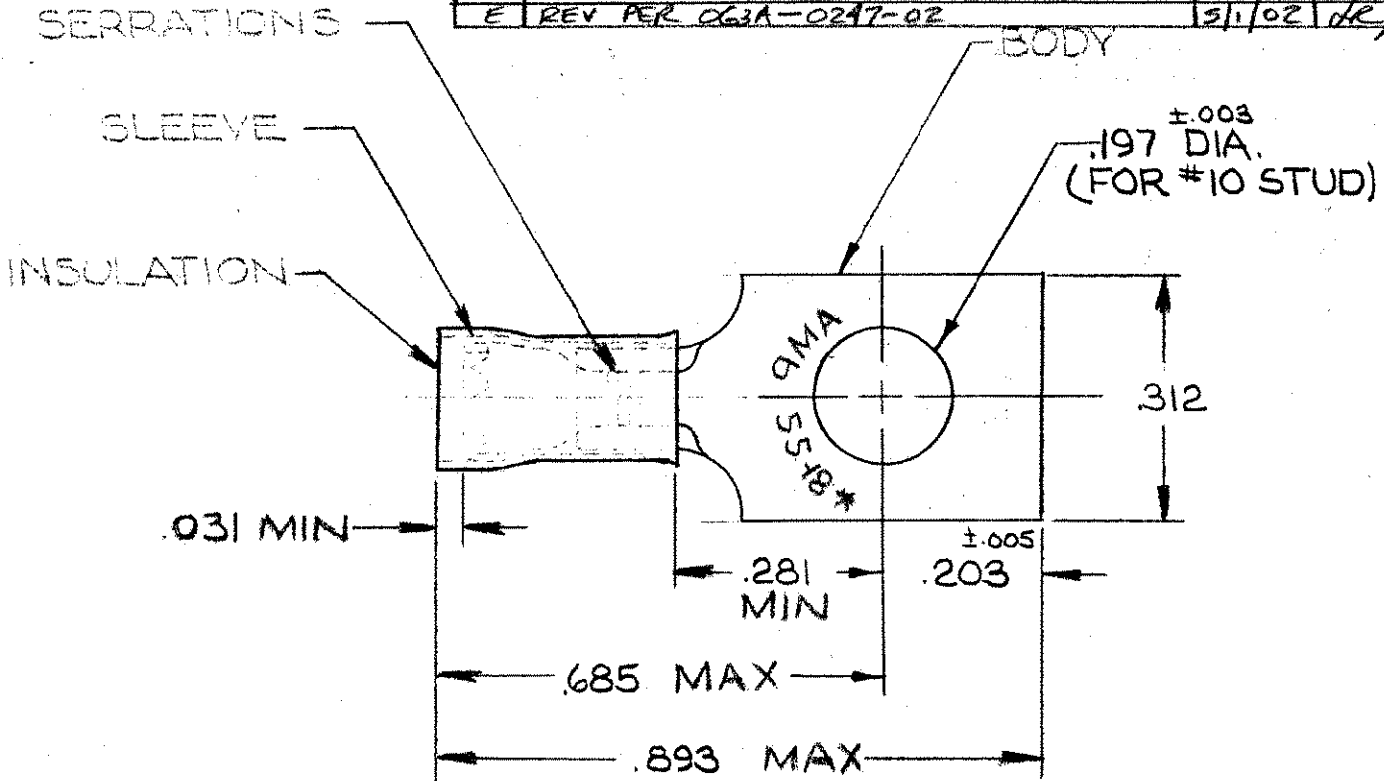
DRAWING MADE IN AMERICAN PROJECTION

6 14 5

© 1953 BY AMP INCORPORATED, ALL RIGHTS RESERVED. AMP PRODUCTS COVERED BY PATENTS AND/OR PATENTS PENDING.

REVISIONS

LTR	DESCRIPTION	DATE	APPROVED
B	REVISED & REDRAWN P-6078 WM	12-30-69	FCJ
C	REV PER G-4732 JT	1/22/88	JIS
D	REV/ 0720-0056-93	3-29-93	TQ/me
E	REV PER CG3A-0247-02	5/1/02	dk/Tm



TONGUE MATERIAL THK = .031<sup>±.002</sup>  
FOR .105 TO .140 WIRE INS. DIA.

MARKING 22-18 FOR MILITARY  
COMMERCIAL RANGE 22-16

100	LOOSE PC, BOX	8-320209-1	
1	WIRE TERMINAL	320209	INSULATION: NYLON COLOR; RED SLEEVE: COPPER (QQ-C-576) BODY: COPPER (QQ-C-576) TIN PL (MIL-T-10727)
QTY	DESCRIPTION	PART NO.	MATERIAL & FINISH
UNLESS OTHERWISE SPECIFIED DIMENSIONS ARE IN INCHES TOLERANCES ON: DECIMALS ±.003 ANGLES ± 5°		CONTRACT NO. /	AMP INCORPORATED HARRISBURG, PENNSYLVANIA
MATERIAL		DR. Wayne Millhiser 12-22-69	AMP
SEE TABLE		CHK. P.C. Youngblood 12-30-69	NAME WIRE TERMINAL
		APPD. Swibel 1-5-70	P.D.G. - RECTANGULAR TONGUE
		REL. P.W. Emmerling 1-7-70	WIRE SIZE: 22-16
		DSGN APPD.	SIZE A
		OTHER APPD.	CODE IDENT NO. 00779
			NUMBER 320209
			SCALE NTS
			SHEET 1 OF 1
CUSTOMER DRAWING			

## X-ON Electronics

Largest Supplier of Electrical and Electronic Components

*Click to view similar products for [Terminals](#) category:*

*Click to view products by [TE Connectivity](#) manufacturer:*

Other Similar products are found below :

[00-054007-01074-6](#) [00-054007-70206-1](#) [00-054007-70210-8](#) [00-054007-70217-7](#) [00-054007-70226-9](#) [00-054007-70228-3](#) [00-054007-70248-1](#) [00-054007-70256-6](#) [00-054007-70301-3](#) [00-054007-70316-7](#) [00-054007-49560-4](#) [00-054007-70209-2](#) [00-054007-70225-2](#) [00-054007-70227-6](#) [00-054007-70231-3](#) [00-054007-70241-2](#) [00-054007-70242-9](#) [00-054007-70244-3](#) [00-054007-70246-7](#) [00-054007-70263-4](#) [00-054007-70288-7](#) [00-054007-70290-0](#) [00-054007-70300-6](#) [00-054007-70304-4](#) [01-2065-1-0216](#) [01-2900-1-04412](#) [00581P0075](#) [600TS-10](#) [60205-1](#) [604200-1](#) [605601-1](#) [60598-1-CUT-TAPE](#) [61314-6-C](#) [61810-3](#) [61-S](#) [61-SN](#) [626-0194](#) [62-NBM-A](#) [62-SN](#) [62-SP](#) [63-S](#) [640179-1](#) [M55155/059I03](#) [M55155/079C01](#) [M55155/099H02](#) [M55155/109H01](#) [M55155/109H02](#) [M55155/12XH05](#) [M55155/16XH02](#) [M55155/29-5S](#)