

4

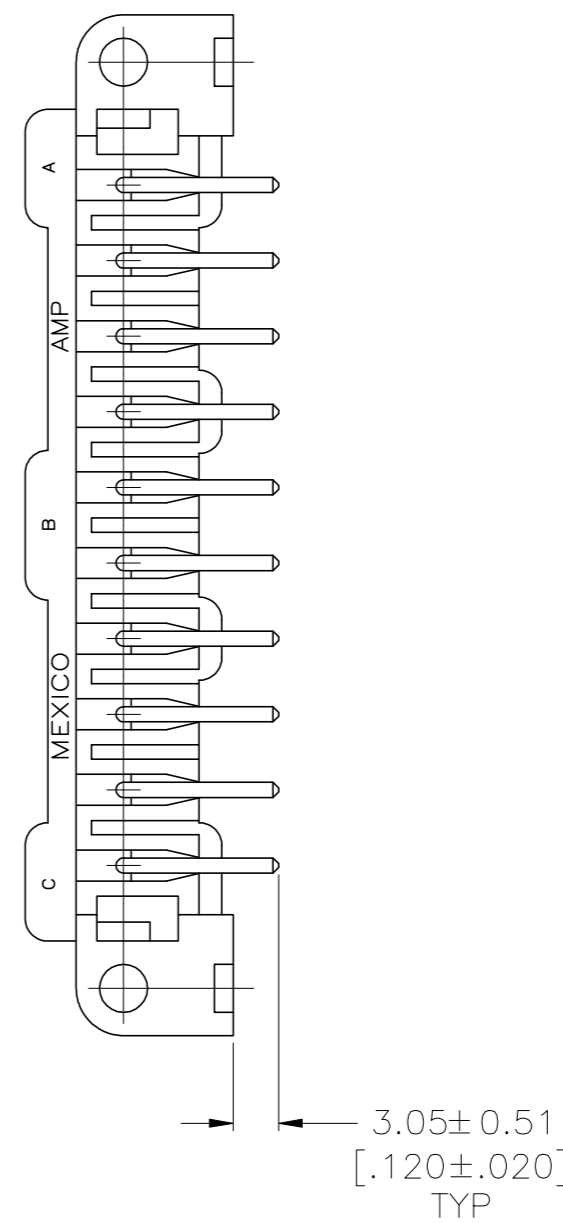
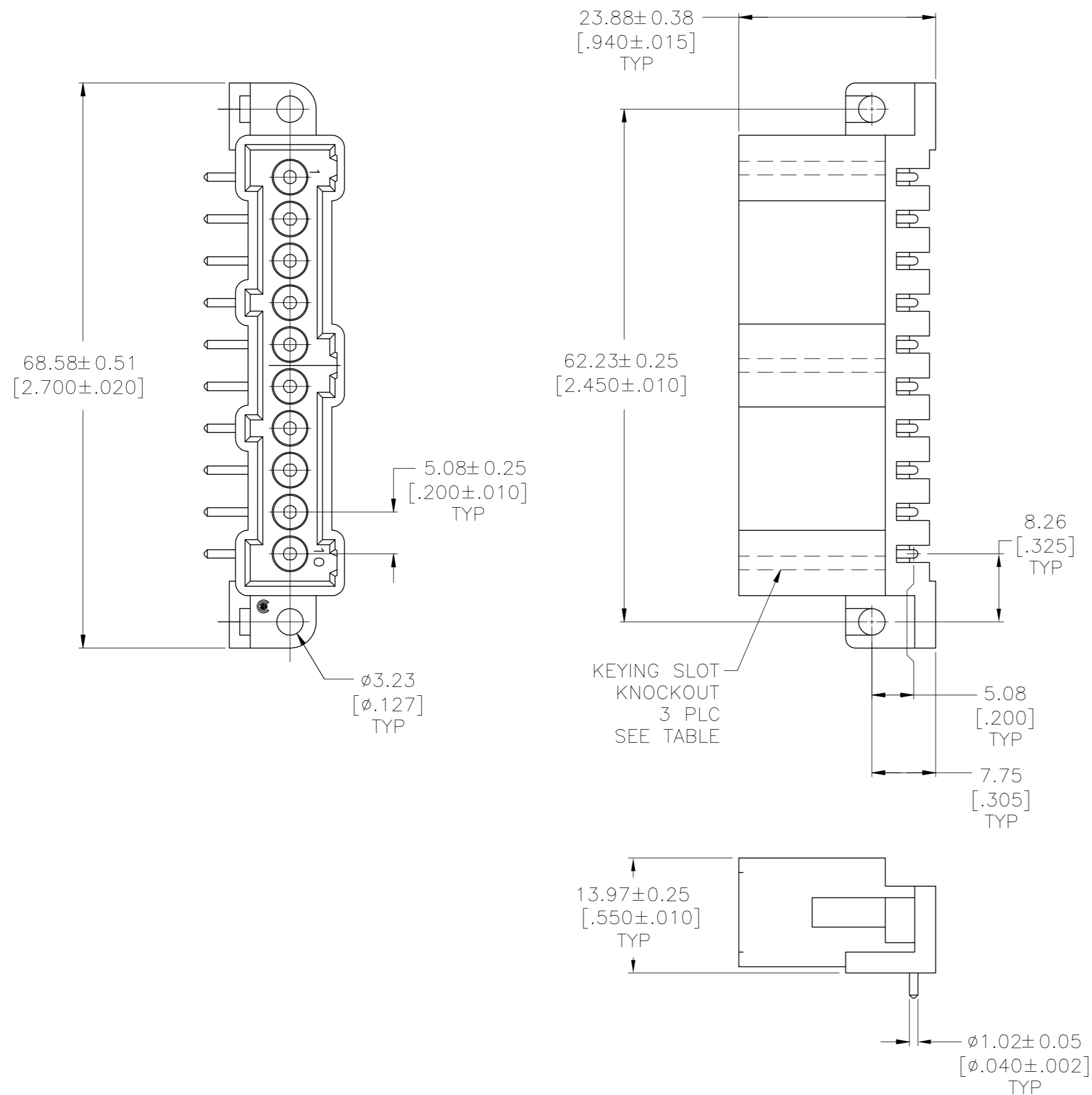
3

2

1

THIS DRAWING IS UNPUBLISHED. RELEASED FOR PUBLICATION. ALL RIGHTS RESERVED. © COPYRIGHT - TE Connectivity

REVISIONS					
P	LTR	DESCRIPTION	DATE	DWN	APVD
	K	REVISED PER ECR-05-5072	27JUN2005	SW	GS
	K1	REVISED PER ECO-09-021826	12JAN10	KK	AEG
	L	REVISED PER ECO-17-011181	04AUG2017	RS	MZ
	M	REVISED PER ECO-18-000443	30JAN2018	RS	MZ



- 1 TIN-LEAD PLATED CONTACTS.
- 2 TIN PLATED CONTACTS.
- 3 OBSOLETE PARTS: OBSOLETE CIS STREAMLINING PER D.RENAUD/D.SINISI
- 4 HOUSING MATERIAL: PA66, BLACK, UL 94 V-0 RATED.

NOTES	MATERIAL REMOVED FROM KEYING SLOT	PART NUMBER
3	OBsolete	A & C
1		3-208403-5
2		B
2		3-208403-4
2		A
2		3-208403-3
2		-
2		3-208403-2
1	OBsolete	B
1	OBsolete	A
1	OBsolete	-
1		2-208403-1
1		1-208403-1
1		208403-1

THIS DRAWING IS A CONTROLLED DOCUMENT.

DWN L.SIPE 08/25/92
CHK R.STONE 9-4-92

DIMENSIONS: mm [INCHES]

TOLERANCES UNLESS OTHERWISE SPECIFIED:

0 PLC	± -
1 PLC	± -
2 PLC	± 0.13 [.005]
3 PLC	± -
4 PLC	± -
ANGLES	± -

MATERIAL 4

APVD -

PRODUCT SPEC -

APPLICATION SPEC -

WEIGHT -

CUSTOMER DRAWING

SCALE 2:1

SHEET 1 of 1

REV N

TE Connectivity Ltd.

HEADER ASSEMBLY, 10 POSN, PIN, METRIMATE

SIZE A2 CAGE CODE 00779 DRAWING NO C=208403

208403

X-ON Electronics

Largest Supplier of Electrical and Electronic Components

Click to view similar products for [Headers & Wire Housings](#) category:

Click to view products by [TE Connectivity](#) manufacturer:

Other Similar products are found below :

[892-18-020-10-001101](#) [58102-G61-06LF](#) [582553-1](#) [0009485154](#) [009176003701906](#) [0050291907](#) [LY20-4P-DT1-P1E-BR](#) [02.125.8002.8](#)
[609-3404](#) [61062-3](#) [61082-181009](#) [622-3653LF](#) [63453-116](#) [636-1030](#) [636-1427](#) [636-3427](#) [636-4007](#) [641938-9](#) [641991-4](#) [644827-2](#) [65817-](#)
[010LF](#) [65817-015LF](#) [65863-015LF](#) [66207-023LF](#) [67095-007LF](#) [67601157](#) [68645-018](#) [68648-049](#) [70.362.1628.0](#) [70-4210](#) [70-4226B](#) [70-](#)
[4853B](#) [707-5020](#) [707-5028](#) [71.350.2428.0](#) [71918-208LF](#) [71961-016LF](#) [733-134](#) [733-162](#) [754199-000](#) [760-3052](#) [787-8014-00](#) [79531-3000](#)
[FCN-360C032-B](#) [FCN-367T-T012/H](#) [FCN-723D010/2](#) [80.063.4001.1](#) [800-90-001-10-001000](#) [800-90-010-10-002000](#) [801-43-002-10-013000](#)