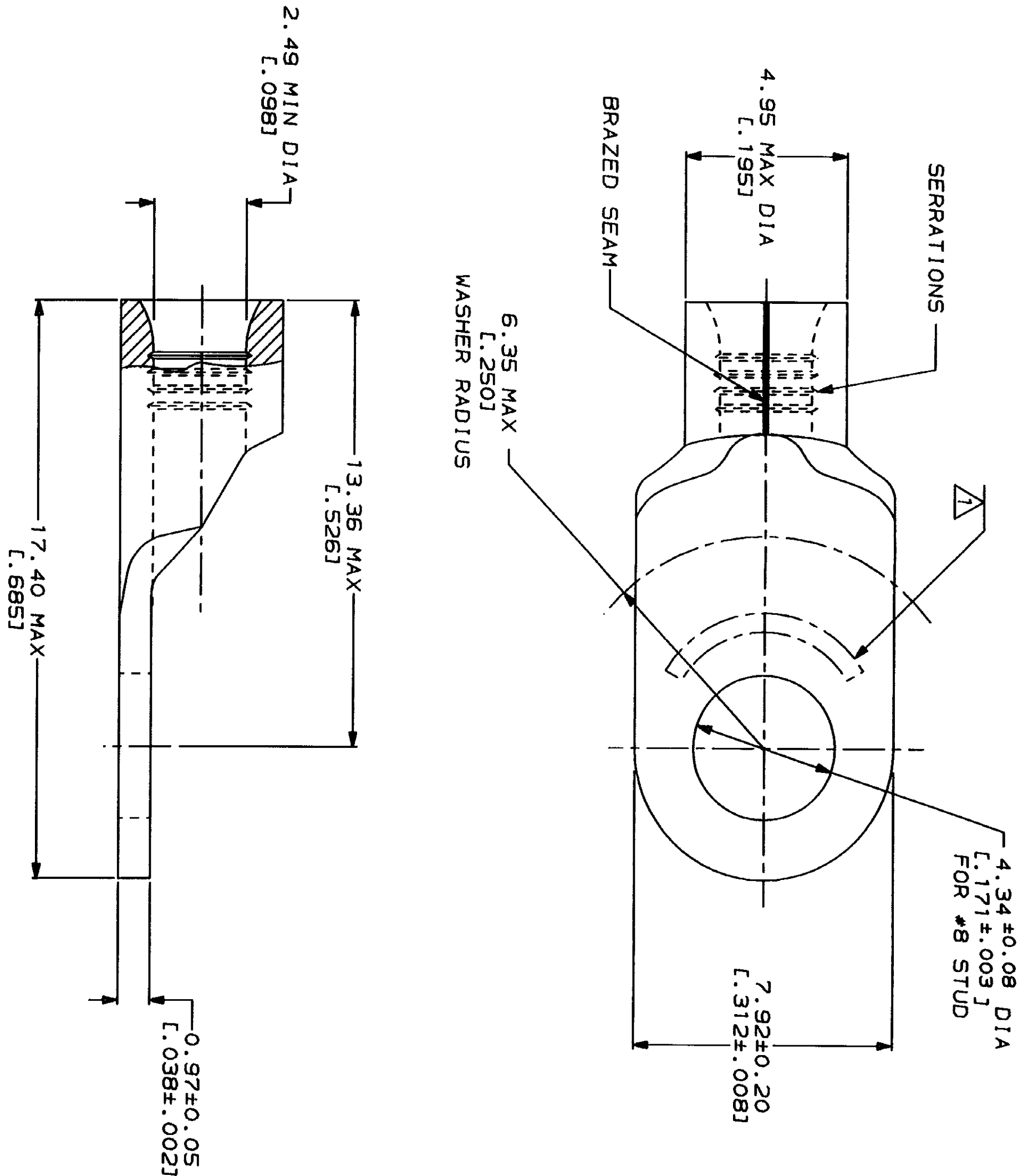


LOC	DIST	ZONE	LTR	REVISIONS	DESCRIPTION	DATE	APPD
G	14			6	REVISED PER 0720-0033-94	3/8/94	AMP

METRIC
DIMENSIONS LISTED IN MM [INCHES]

AMP WIRE RANGE 14-12 AWG SOLID OR STRANDED	UL E13288 Listed 14-12 AWG STRANDED
LR7189 Certified 14-12 AWG SOLID OR STRANDED	MILITARY P/N AND CLASS NOT APPLICABLE

△ STAMP AMP 14-12* APPROX AS SHOWN



AMP INCORPORATED
CUSTOMER SERVICE SYSTEMS

FOR ADDITIONAL PRODUCT INFORMATION OR COPIES OF DRAWINGS AND TECHNICAL DOCUMENTS	PRODUCT INFORMATION CENTER 1-800-522-6752	MAX RECOMMENDED OPERATING TEMPERATURE: 170°C MAX
FOR APPLICATION TOOLING INFORMATION	TOOLING ASSISTANCE CENTER 1-800-722-1111	VOLTAGE RATING: NOT APPLICABLE
FOR ORDER ENTRY	1-800-526-5142	WIRE CROSS SECTIONAL AREA RANGE: 1.65-4.17mm² [3,260-9,230] CIR MILS SOLID OR STRANDED

DO NOT SCALE PRINT.
UNLESS SPECIFIED
DIMENSIONS IN mm (INCHES)
TOLERANCES ON:
2 PLG DEC ± .1
3 PLG DEC ± .1
ANGLES
MATERIAL
COPPER PER
ASTM B-152
ANNEALED

DR 3/8/94 DK SCHRUM	DR 3/8/94 DK SCHRUM	NAME	AMP
CHK 3/9/94 DA PATTERSON	CHK 3/9/94 DA PATTERSON	TERMINAL, RING TONGUE, SOLISTRAND™	AMP Incorporated Harrisburg, PA 17105-3608
APPD 3/9/94 CH KILWYCH	APPD 3/9/94 CH KILWYCH	FINISH	TIN PLATE
APPD 3/9/94 JL NECKLEY	APPD 3/9/94 JL NECKLEY	0.00254 [L.000100] MIN THK PER MIL-T-10727	APPLICATION SPEC
PRODUCT SPEC	PRODUCT SPEC	SCALE	8:1
WEIGHT	WEIGHT	CAGE CODE	00779
		DRAWING NO	321827
		SHEET	1 OF 1

OBSOLETE	2500	ON TAPE	1-321827-0
QUANTITY	---	LOOSE PIECE	321827
PACKAGING TYPE		PART NO	

X-ON Electronics

Largest Supplier of Electrical and Electronic Components

Click to view similar products for [Terminals](#) category:

Click to view products by [TE Connectivity](#) manufacturer:

Other Similar products are found below :

[00-054007-01074-6](#) [00-054007-70206-1](#) [00-054007-70210-8](#) [00-054007-70217-7](#) [00-054007-70226-9](#) [00-054007-70228-3](#) [00-054007-70248-1](#) [00-054007-70256-6](#) [00-054007-70301-3](#) [00-054007-70316-7](#) [00-054007-49560-4](#) [00-054007-70209-2](#) [00-054007-70225-2](#) [00-054007-70227-6](#) [00-054007-70231-3](#) [00-054007-70241-2](#) [00-054007-70242-9](#) [00-054007-70244-3](#) [00-054007-70246-7](#) [00-054007-70263-4](#) [00-054007-70288-7](#) [00-054007-70290-0](#) [00-054007-70300-6](#) [00-054007-70304-4](#) [01-2065-1-0216](#) [01-2900-1-04412](#) [00581P0075](#) [600TS-10](#) [60205-1](#) [604200-1](#) [605601-1](#) [60598-1-CUT-TAPE](#) [61314-6-C](#) [61810-3](#) [61-S](#) [61-SN](#) [626-0194](#) [62-NBM-A](#) [62-SN](#) [62-SP](#) [63-S](#) [640179-1](#) [M55155/059I03](#) [M55155/079C01](#) [M55155/099H02](#) [M55155/109H01](#) [M55155/109H02](#) [M55155/12XH05](#) [M55155/16XH02](#) [M55155/29-5S](#)